

# A L I E N



## Pack 01

### BUILD INSTRUCTIONS

STAGE 01: THE UPPER JAW

STAGE 03: THE SKULL & JAWBONE

STAGE 02: THE LOWER JAW

STAGE 04: THE TIBIA & RETRACTABLE JAW



## Before you start...

To help you get the best out of building the Xenomorph, we've prepared a modellers checklist with hints, tips and advice from our expert. The information below is aimed at making your build as enjoyable and professional as possible right from the start.

Make sure you have good ventilation when using adhesives and to replace caps firmly.

Always use the correct adhesives and always follow manufacturers guidance.

Apply glue sparingly and use a cocktail stick to apply so that you don't use too much nor apply the glue too heavily.

Work in a well lit area. Use an anglepoise lamp or similar on your work bench to ensure you have good light whenever you're at work.

Organise storage – stackable, labeled containers like old clean takeaway or ice-cream plastic tubs with lids are perfect. Small parts which may not be needed until a later stage should be kept in clear plastic and labeled bags.

Use masking tape to hold parts temporarily in place.

Only use the correct size screwdriver that fits the screw head firmly.

Cut parts from a sprue (framework) with side cutters or a craft knife. Side cutters tend to be easiest.

Use a magnet to help find screws that have fallen on the floor.

Leave parts in the paper bags supplied until they are needed. You can write a note of the stage and part on the paper bag too.

If a screw is tight, try turning a half turn forwards followed by a quarter turn backwards. Also, it can sometimes help to temporarily fit a screw into its hole before assembling the parts.

But most of all, enjoy your build!



**WARNING:** Some parts are assembled using magnets. These magnets can cause serious injury if they are swallowed. Keep away from children. If you suspect a magnet has been swallowed, seek medical help straight away.

All parts belong to a kit. Collectors item for adults.

Not suitable for children under 14.

Some parts may have sharp edges, please handle them with care.

The installation of electronic parts must always be carried out by an adult. When replacing batteries, use the same type of batteries.

Please ensure that the battery compartment is securely fastened before you use the model.

Used batteries should be recycled.

Please make sure to check with your local authority how batteries should be disposed of in your area.

Batteries can present a choking danger to small children and may cause serious harm if ingested. Do not leave them lying around and keep any spare batteries locked away at all times.

# STAGE 1: THE UPPER JAW

The first stage of the model's assembly starts with the upper jaw, which will become part of the Xenomorph's skull.



## PARTS SUPPLIED

Ref.	Name	Qty.
1-1	Skull A	1
1-2	Upper Jaw A	1
1-3	Upper Jaw B	1
1-4	Upper Tooth 1 A	1
1-5	Upper Tooth 2 B	1
1-6	Upper Tooth 3 C	1
1-7	Upper Teeth 4 D	1
1-8	Upper Tooth 5 E	1
1-9	Upper Tooth 6 F	1
1-10	Upper Tooth 7 G	1
1-11	Screwdriver	1
1-12	Screws 2x6mm	4*

\* A spare screw is also supplied in case of loss or damage.

## ASSEMBLY ADVICE

Some parts of the model are attached using screws whilst some simply push-fit together. Other parts will need to be glued in place using superglue (Cyanoacrylate or CA). Always follow the manufacturers guidelines and warnings, apply sparingly and use in a well ventilated space. Superglue gel (thick superglue) can be applied with pin-point accuracy to the relevant surface using a cocktail stick. Where possible, parts should be test-fitted in place before glueing.

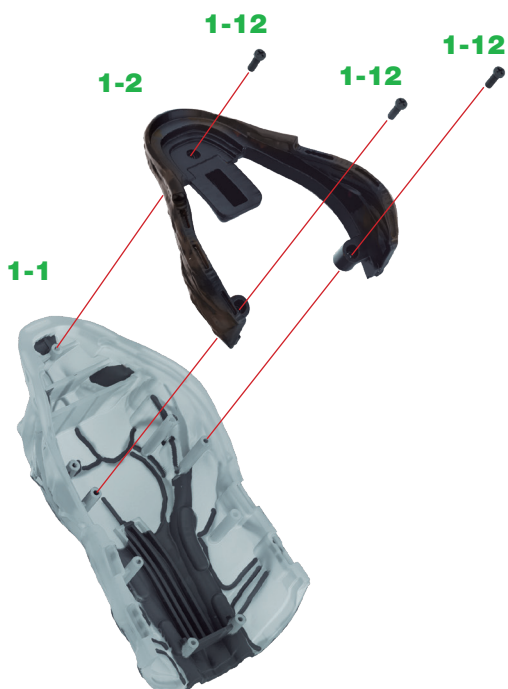
The instructions are numbered to indicate the correct order of construction and also include tips and tricks to make the assembly of the model as easy as possible.

To protect the paint finish on the components use a clean piece of white paper on your work surface to build on.

Always read through the instructions carefully and study the illustrations before starting the assembly.

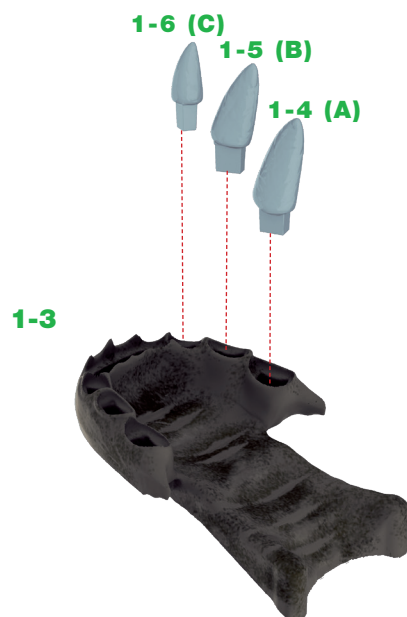
## STAGE 1: THE UPPER JAW

**EXPERT TIP:** If the screws are difficult to fit, it could be because they are cutting a thread as they are being screwed in. If this should be the case, try turning the screw forwards half a turn, then back a quarter of a turn. Repeat this process until the screw is firmly secured in place.



1

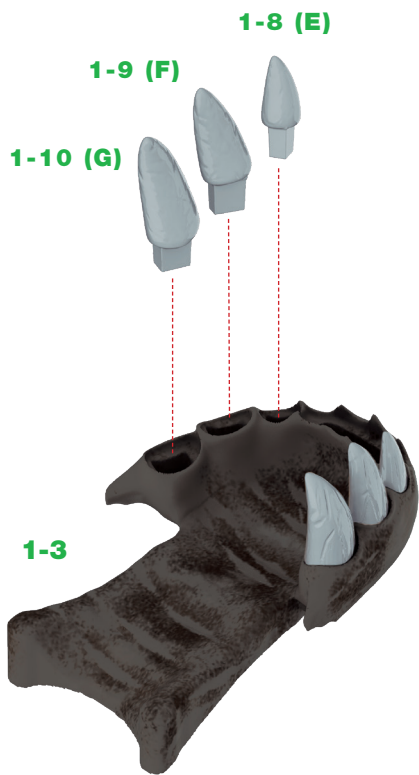
To begin the assembly, place the Skull **1-1** upside down on the work surface. Orientate the Upper Jaw A **1-2** so that the three screw holes align with the clear raised sockets on Skull part **1-1**. Using the Screwdriver **1-11**, or similar, fix the two parts together with three 2x6mm screws **1-12**. Ensure the parts fit snugly together and the screws are fully seated.



2

Place the Upper Jaw B **1-3** on a flat surface with the teeth sockets facing upwards. The teeth are individually embossed with a letter to help identify them. The Teeth **1-4 (A)**, **1-5 (B)** and **1-6 (C)** are fitted into their corresponding sockets on the right hand side, as shown. Test-fit the teeth, noting how the sockets are individually shaped. When you are happy with the fit, apply a small amount of superglue in their sockets and secure the teeth firmly in place. A cocktail stick or similar is useful when applying small amounts of glue.

## STAGE 1: THE UPPER JAW



In a similar way to the previous step, fit the remaining Teeth **1-8 (E)**, **1-9 (F)** and **1-10 (G)** into their corresponding sockets in the Upper Jaw B **1-3**.

3

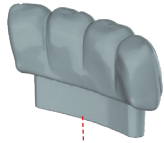
### EXPERT ADVICE

Parts that look similar often have letters or markings on them to help differentiate between them. For example, the teeth in this stage have the letters A to G embossed on them.



## STAGE 1: THE UPPER JAW

1-7 (D)



1-3

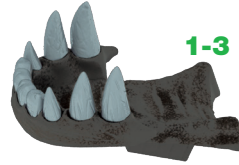
4

The Upper Teeth **1-7 (D)** are fitted into the central cavity at the front of the Upper Jaw **1-3**. After test-fitting, apply a small drop of superglue and fix the teeth in place.

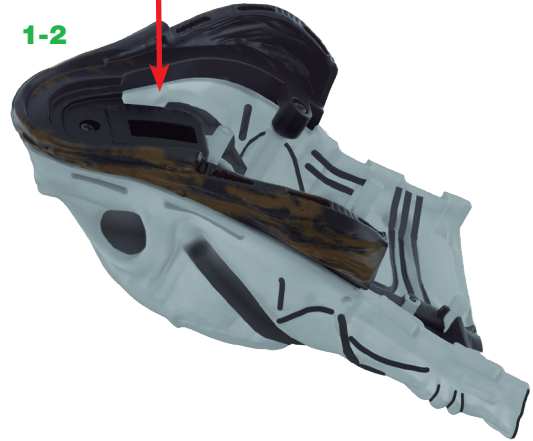
### EXPERT ADVICE

The construction uses several types of screw which differ in size, colour and material. The screws are supplied in separate packaging and a spare is usually included for each type. Keep these extra screws safe and labelled in case a replacement is required.

1-3



1-2



5

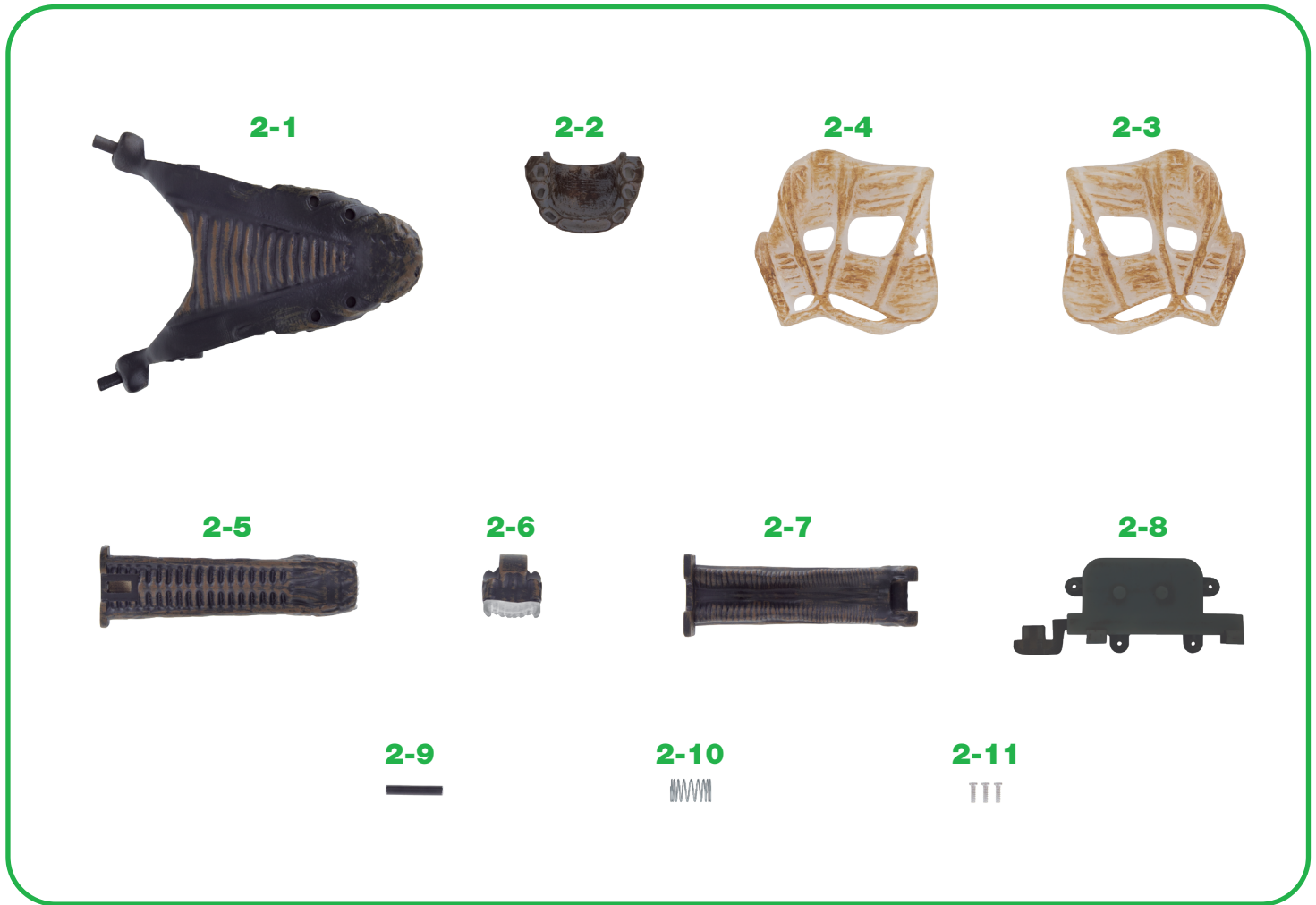
The Upper Jaw B **1-3** is fitted into the Upper Jaw A **1-2**, as shown. Test-fit the large rectangular peg on part **1-3** into the corresponding rectangular recess on the underside of part **1-2**. Apply a little superglue to the peg and secure the parts firmly together.

## STAGE 1 IS COMPLETE



# STAGE 2: THE LOWER JAW

In this stage you will assemble the lower jaw pieces and parts of the retractable jaw.

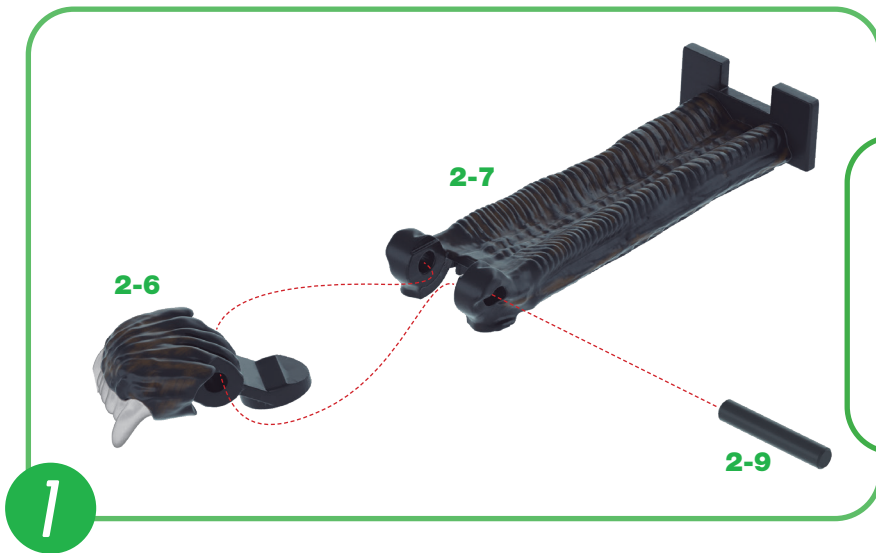


## PARTS SUPPLIED

Ref.	Name	Qty	Ref.	Name	Qty
2-1	Lower Jaw A	1	2-7	Retractable Jaw 3	1
2-2	Lower Jaw B	1	2-8	Retractable Jaw Gearbox	1
2-3	Lateral Lower Jaw A (left)	1	2-9	Connecting Pin	1
2-4	Lateral Lower Jaw B (right)	1	2-10	Spring A	1
2-5	Retractable Jaw 1	1	2-11	Screws 2.3x6mm	3*
2-6	Retractable Jaw 2	1			

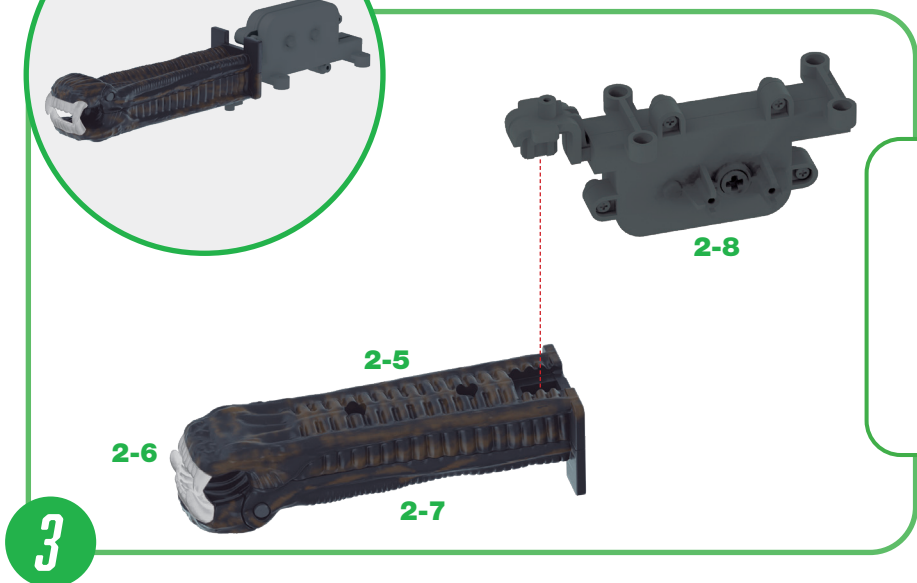
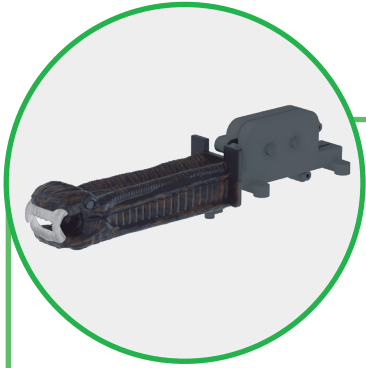
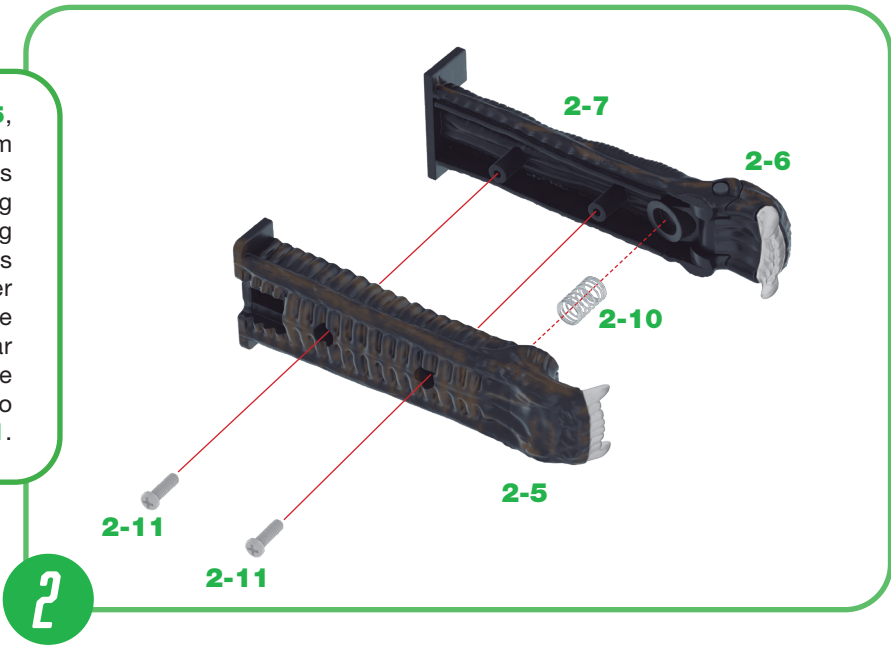
\* A spare screw is also supplied in case of loss or damage.

## STAGE 2: THE LOWER JAW



Place parts **2-6**, **2-7** and **2-9** on the work surface, as shown. The Retractable Jaw **2-6** fits between the end of Jaw part **2-7**. Align the holes in the two parts and push the Connecting Pin **2-9** through the holes to join the parts together.

Next, take Retractable Jaw part **2-5**, the Spring **2-10** and two 2.3x6mm screws **2-11** and arrange them as shown. Push one end of the Spring **2-10** onto the cross shaped peg inside Jaw **2-5**. Join the two halves of the Retractable Jaw together taking care that the other end of the Spring **2-10** fits into the circular recess in Jaw part **2-7**. Secure the two parts together using two 2.3x6mm screws **2-11**.



The Retractable Jaw Gearbox **2-8** is also needed in this step. Turn the Jaw assembly over and firmly push the rectangular peg on the Gearbox **2-8** into the matching recess in Jaw part **2-5**; this is a push fit connection. Keep the assembly safely aside until it is needed in the next stage.



## STAGE 2: THE LOWER JAW

### EXPERT ADVICE

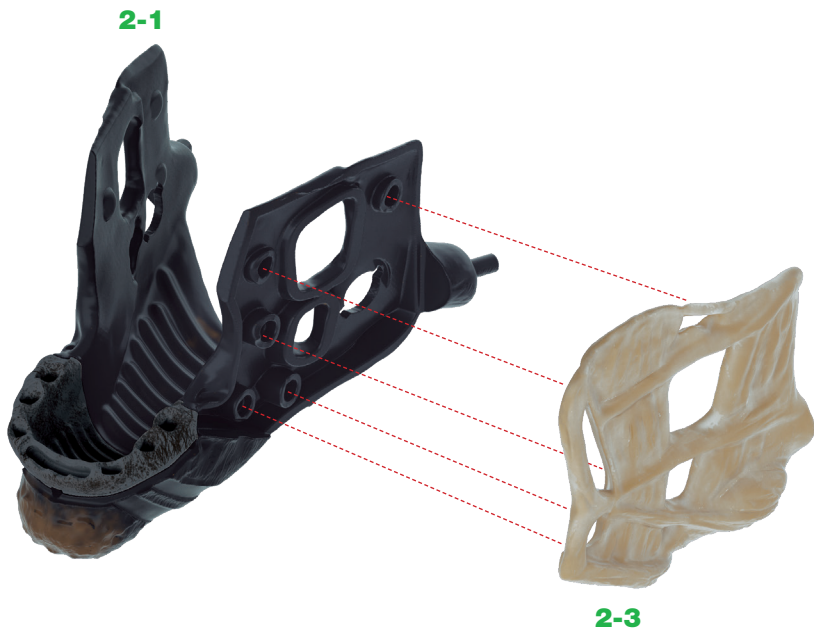
Protect painted parts from damage during assembly by working on a cutting mat or a sheet of cardboard. To clean components, use a soft, dry cloth so as not to damage your Xenomorph. Remove dust from intricate items using a soft brush.



Take the Lower Jaw parts **2-1** and **2-2**. Note how the rectangular peg on Jaw **2-2** fits into the matching recess on Lower part **2-1**. Apply a little glue in the recess and press the two parts firmly together. Make sure the parts are secured together before continuing.

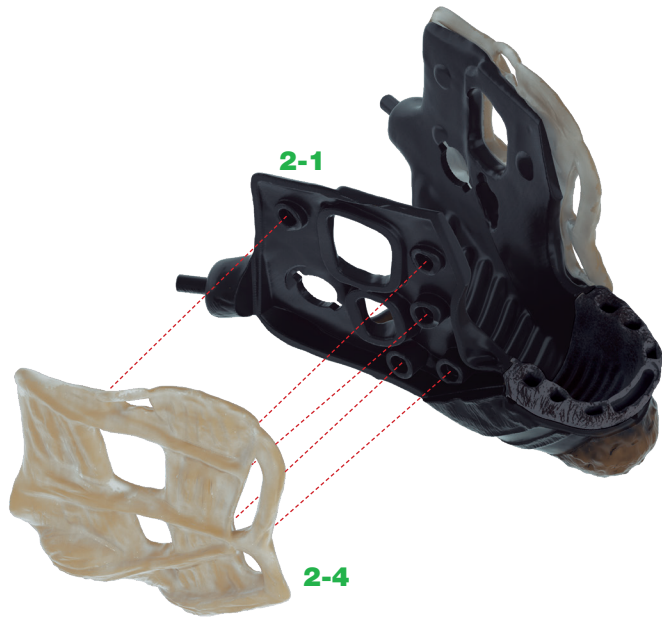
4

The Lower Lateral Jaw **2-3** is fitted to the left side of the Jaw **2-1**. There are five circular sockets on Jaw part **2-1** into which pegs on Jaw **2-3** fit. Jaw part **2-1** may need to be bent slightly for the pegs to align. As part **2-3** will need to be removed in a later stage, **do not glue in place**. If necessary, use a small piece of masking tape to temporarily hold the part in place.



5

## STAGE 2: THE LOWER JAW



In a similar way, fit the Lateral Lower Jaw **2-4** to the right hand side of the Jaw **2-1**. Again, **do not glue in place** and if necessary, use a small piece of masking tape to temporarily hold the part in place.

6

## STAGE 2 IS COMPLETE

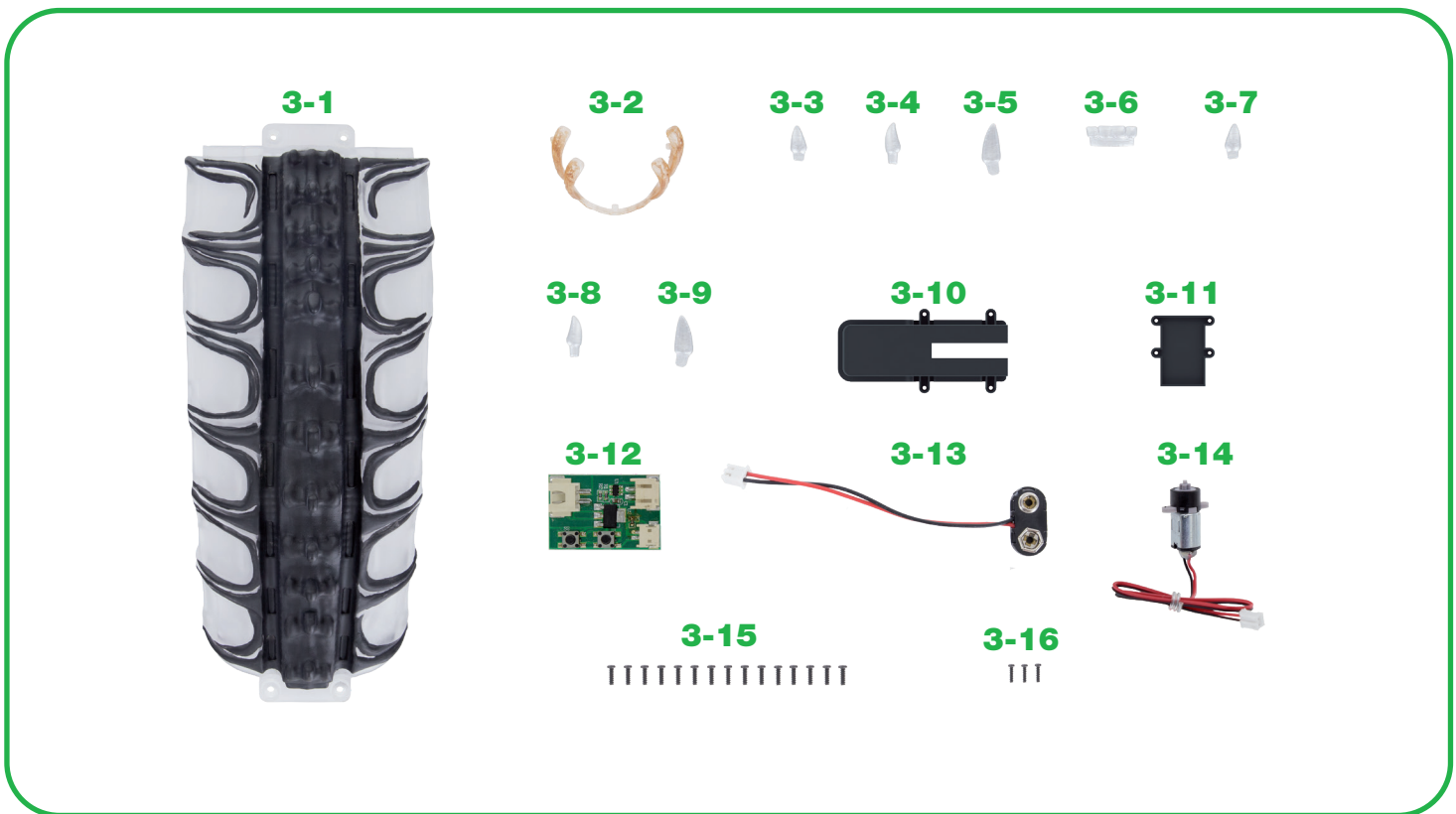


*WORK HAS NOW BEEN DONE ON THE RETRACTABLE JAW ALONG WITH OTHER PARTS OF THE LOWER JAW. TO KEEP THE PARTS OF YOUR MODEL IN PERFECT CONDITION, AVOID CONTACT WITH OTHER OBJECTS AND KEEP THEM IN A SAFE PLACE OUT OF DIRECT SUNLIGHT SO THEY DO NOT WARP.*



# STAGE 3: THE SKULL & JAWBONE

In this stage you will fix the teeth on the lower jaw and continue the assembly of the upper jaw and skull.



## PARTS SUPPLIED

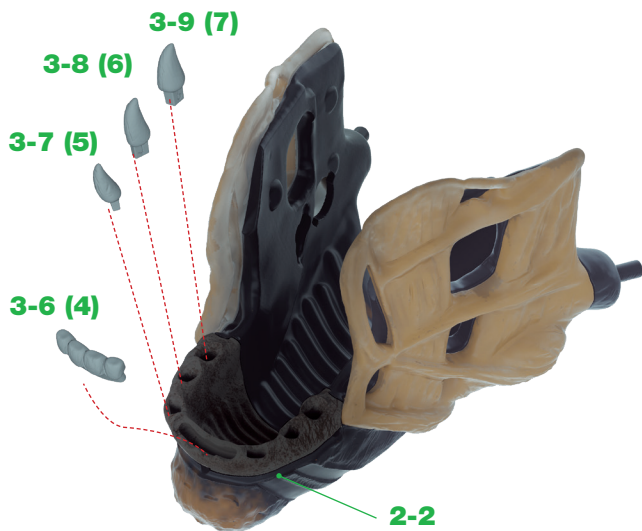
Ref.	Name	Qty.	Ref.	Name	Qty.
3-1	Upper Middle Skull	1	3-9	Lower Tooth 7	1
3-2	Mandible	1	3-10	Retractable Jaw Frame	1
3-3	Lower Tooth 1	1	3-11	Retractable Jaw Frame Cover	1
3-4	Lower Tooth 2	1	3-12	Printed Circuit Board A	1
3-5	Lower Tooth 3	1	3-13	Battery Connector	1
3-6	Lower Tooth 4	1	3-14	Motor with Cable	1
3-7	Lower Tooth 5	1	3-15	Screws 2.3x6mm	15*
3-8	Lower Tooth 6	1	3-16	Screws 2x6mm	3*

\*A spare screw of each type is supplied in case of loss or damage.

## STAGE 3: THE SKULL & JAWBONE

### ASSEMBLY ADVICE

The teeth are individually embossed with a number to help identify them.



1

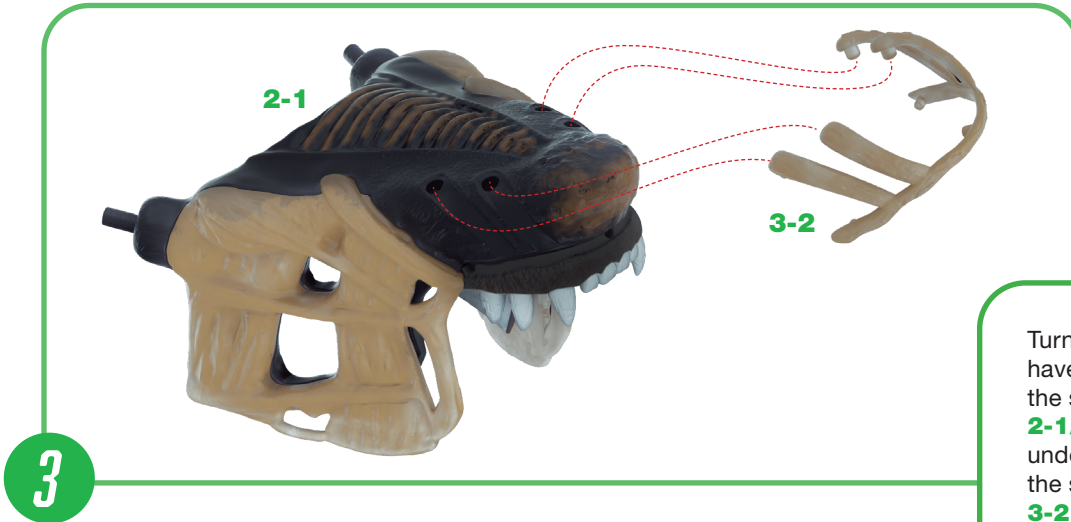
Take the previously assembled Lower Jaw **2-2** as shown above and test-fit the Teeth **3-7 (5)**, **3-8 (6)** and **3-9 (7)** into the right hand side of the jaw. When you are happy with the fit, apply a small amount of glue to their sockets in part **2-2** and secure them firmly in place. Then glue the incisor teeth **3-6 (4)** into the socket at the front.



2

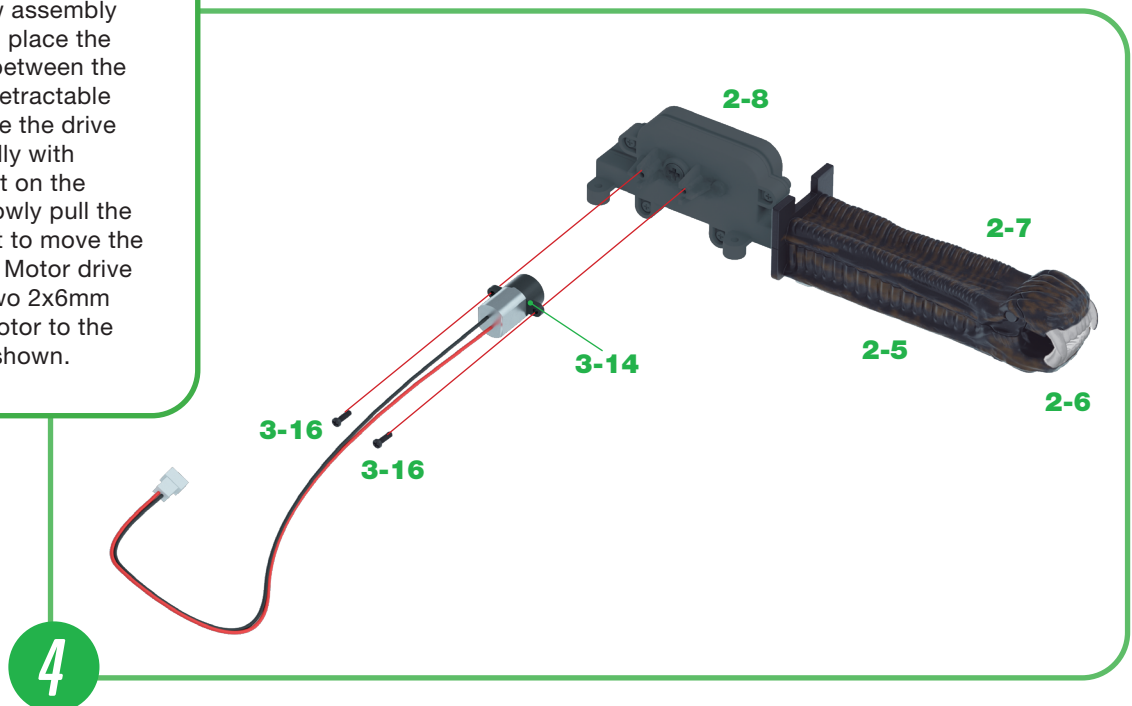
In a similar way to the previous step, fit the remaining teeth **3-3 (1)**, **3-4 (2)** and **3-5(3)** into their corresponding sockets in the Lower Jaw **2-2**.

## STAGE 3: THE SKULL & JAWBONE

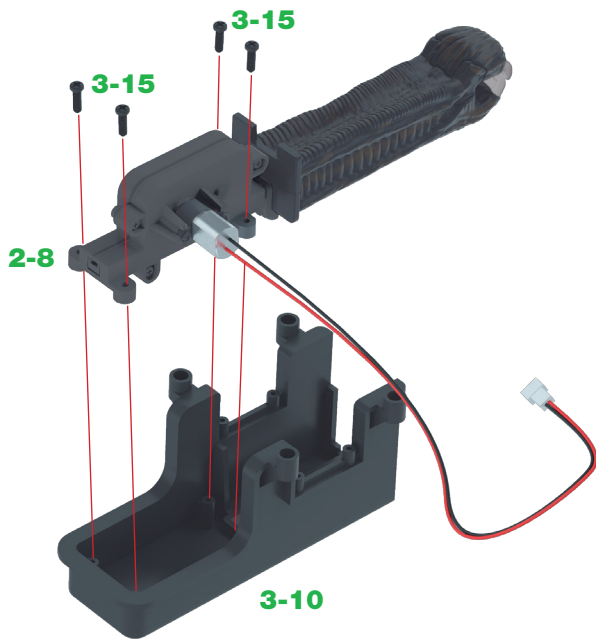


Turn over the Lower Jaw **2-1** and have the mandible **3-2** ready. Locate the seven holes in the jaw assembly **2-1/2-2**; there are four on the underside, one at the front and two at the side. After test fitting the Mandible **3-2**, apply a little glue to each of the holes in place (see the picture in the 'Stage 3 Complete' box on page 15). You may find that you need to stretch the Mandible slightly for it to fit and hold it in place until the glue sets.

Take the Retractable Jaw assembly from the previous kit and place the Motor with Cable **3-14** between the mounting points of the Retractable Jaw Gearbox **2-8**. Ensure the drive on the Motor engages fully with the corresponding socket on the Gearbox. If it doesn't, slowly pull the Retractable Jaw in or out to move the Gearbox socket until the Motor drive engages properly. Use two 2x6mm screws **3-16** to fit the Motor to the side of the Gearbox, as shown.

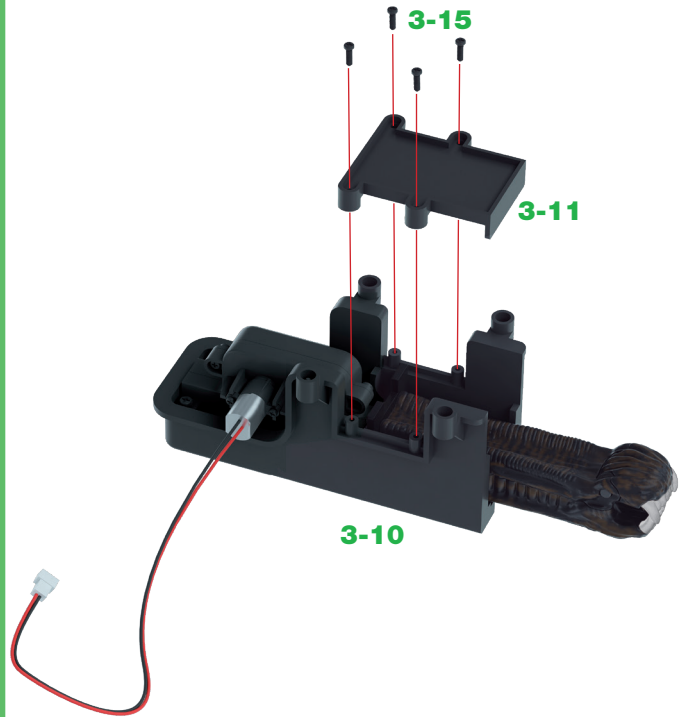


## STAGE 3: THE SKULL & JAWBONE



5

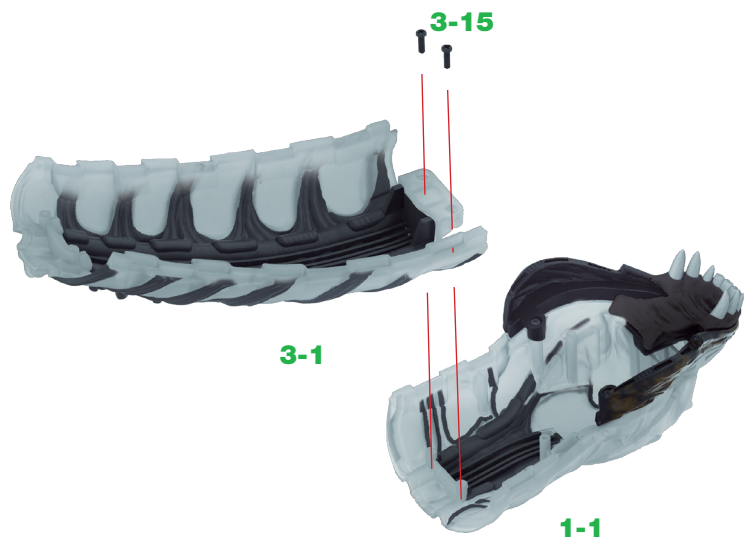
Place the Retractable Jaw Frame **3-10** facing upwards on your work surface. Fit the Retractable Jaw Gearbox **2-8** in place, aligning the screw holes and sockets, as shown. Use four 2.3x6mm screws **3-15** to secure the parts together.



6

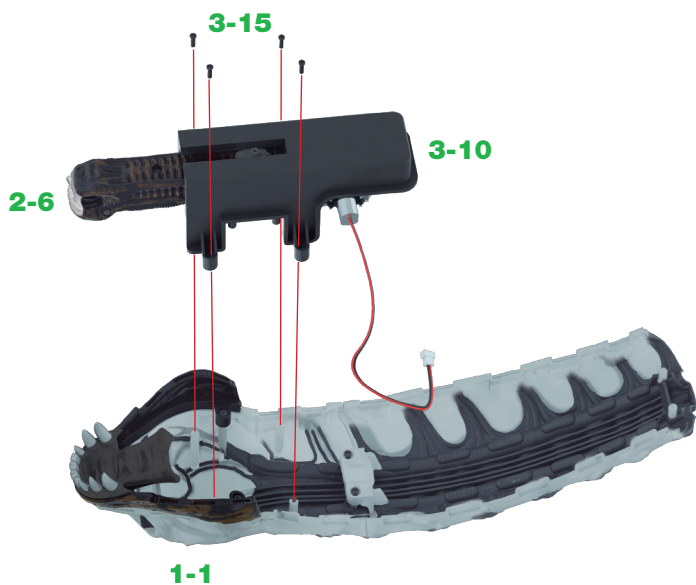
Fit the Retractable Jaw Frame Cover **3-11** onto the four raised screw sockets on part **3-10**. Note that the raised 'H' shaped feature is on the underside of Cover **3-11**. Secure in place using four 2.3x6mm screws **3-15**, as shown.

Take the Skull assembly **1-1**, constructed in Stage 1 and the Upper Middle Skull **3-1** and lay them upside down on your work surface. Align the holes where the two parts fit together and join them using two 2.3x6mm screws **3-15**.



7

## STAGE 3: THE SKULL & JAWBONE



With the Retractable Jaw assembly **3-10** held upside down, locate the four clear raised screw sockets at the front of the Skull assembly **1-1**. Align the screw holes on the Retractable Jaw assembly with the raised screw sockets on the skull and secure in place using four 2.3x6mm screws **3-15**.

### EXPERT ADVICE

The Printed Circuit Board and the Battery Connector provided with this stage will not be used during this part of the assembly. Be careful to keep these pieces in a safe, dust-free place until they are needed.

8

## STAGE 3 IS COMPLETE



# STAGE 4: THE TIBIA & RETRACTABLE JAW

In this stage you'll construct one of the shins and complete the retractable jaw of the Xenomorph.



## PARTS SUPPLIED

Ref.	Name	Qty.	Ref.	Name	Qty.
4-1	Tibia 1	1	4-5	Pipe	1
4-2	Tibia 2	1	4-6	Calf Protection	1
4-3	Connector	1	4-7	Magnets	8
4-4	Calf Skin	1	4-8	Screws 2.3x6mm	3*

\* A spare screw is also supplied in case of loss or damage.



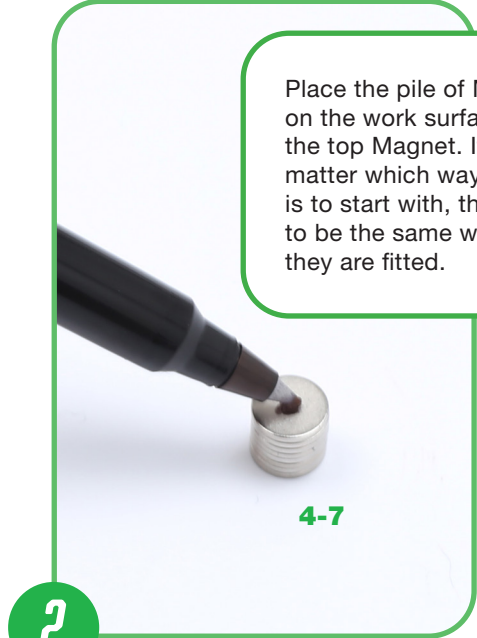
## STAGE 4: THE TIBIA & RETRACTABLE JAW

**1**



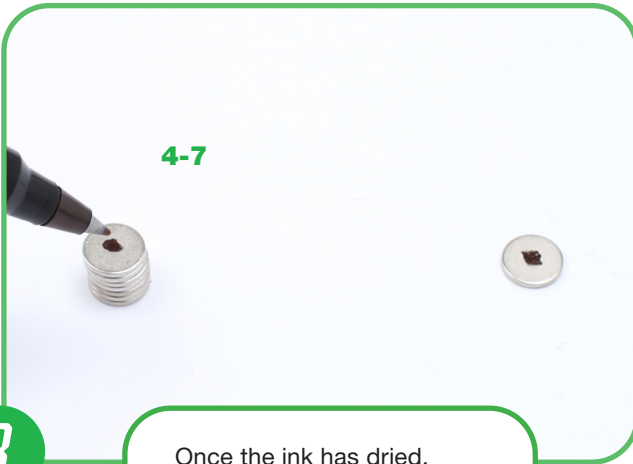
It is very important that the Magnets **4-7** are fitted the same way up with their polarity in the same direction. To help do this, mark the magnets as described in the following steps. You will need a permanent marker pen (not supplied).

**2**



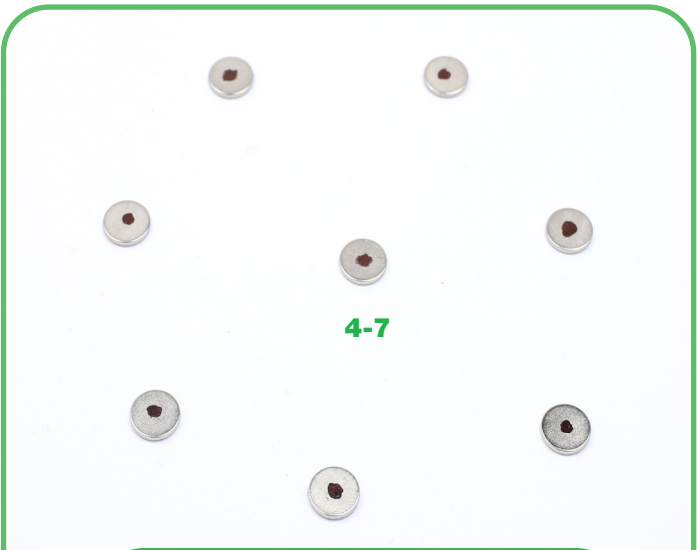
Place the pile of Magnets **4-7** on the work surface and mark the top Magnet. It doesn't matter which way up the pile is to start with, they just need to be the same way up when they are fitted.

**3**



Once the ink has dried, gently slide the first Magnet **4-7** off the top of the pile and mark the next.

**4**

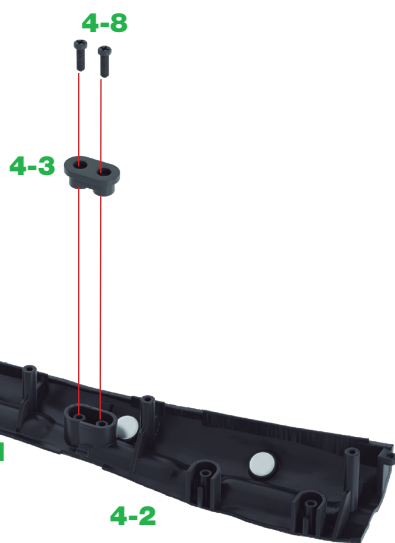
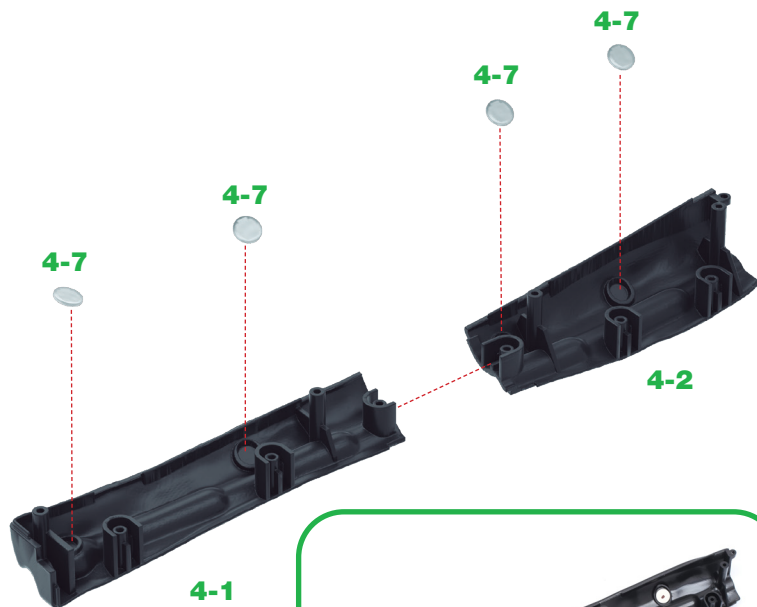


Continue this process until all eight Magnets **4-7** have been marked in this way and are laid out. You will find that when their polarity is orientated the same way, they will repel each other when they are moved around the work surface.

## STAGE 4: THE TIBIA & RETRACTABLE JAW

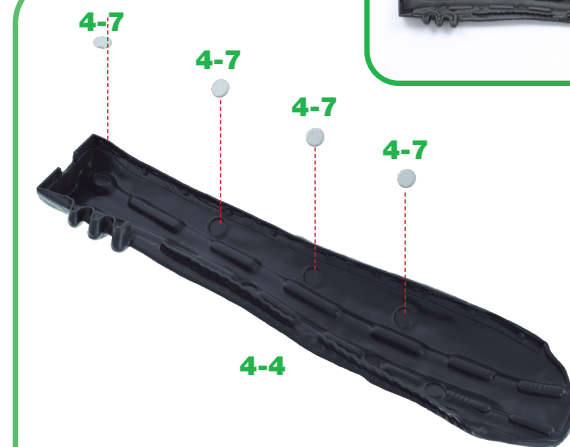
Take the Tibias **4-1** and **4-2** and place them on your work surface. When fitting the Magnets, it is essential that they are all the same way up (same polarity). The Magnets **4-7** need to be fitted with the side that you have marked facing upwards (see inset). Apply a little glue to each of the four recesses and firmly secure the Magnets **4-7** into them, as shown. Again, the marked side should be facing upwards.

5



6

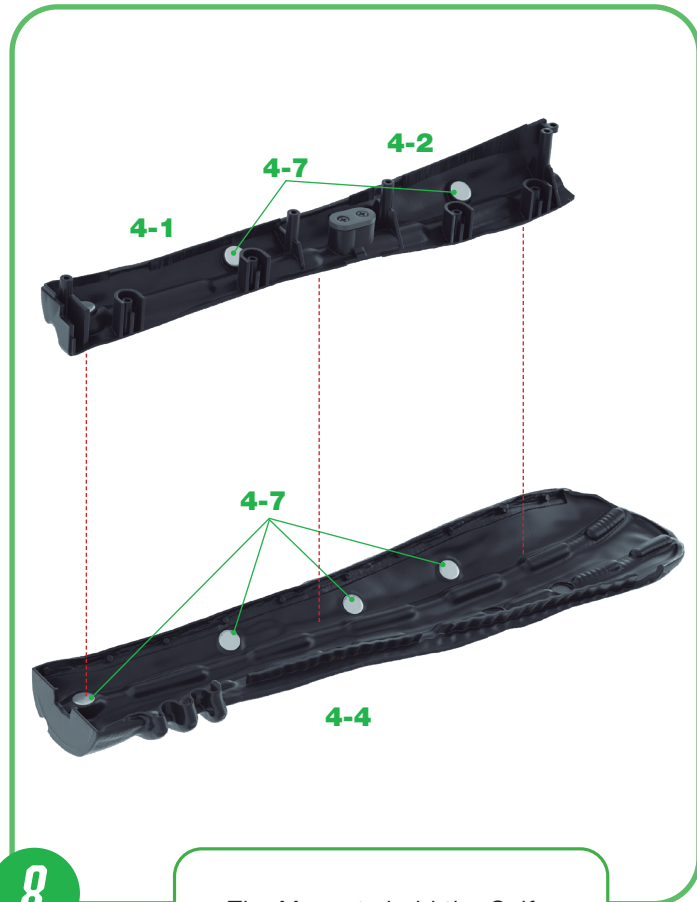
The two parts of the Tibia **4-1** and **4-2** are joined together using the Connector **4-3**. Fit the connector into the oval recess formed at the joint and secure in place using two 2.3x6mm screws **4-8**.



7

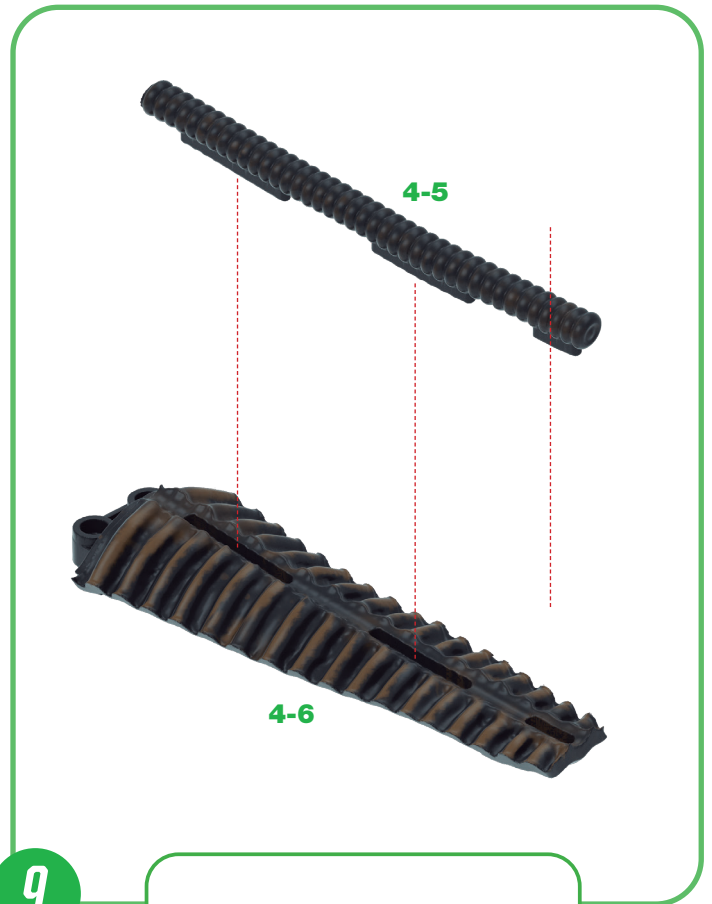
Turn the Calf Skin **4-4** upside down and note the four circular recesses for the magnets, as shown. The Magnets **4-7** are fitted the same way up as in step 5 with the marked side facing upwards (see inset). Glue the Magnets **4-7** in place.

## STAGE 4: THE TIBIA & RETRACTABLE JAW



8

The Magnets hold the Calf Skin to the Tibia. Place the Tibia **4-1/4-2** on top of the Calf Skin **4-4** making sure you align the Magnets **4-7** on each piece. Keep the parts safely aside.



9

Test-fit the Pipe **4-5** into the grooves of the Calf Protection **4-6**. When you are happy with the fit, apply a little glue to the tabs on Pipe **4-5** and secure in place.

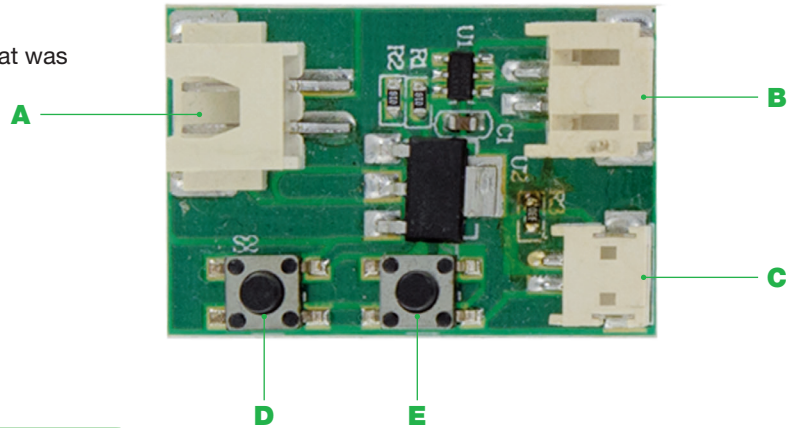
## STAGE 4: THE TIBIA & RETRACTABLE JAW

### TESTING THE RETRACTABLE JAW

#### CIRCUIT BOARD DIAGRAM

Here is a quick guide to the circuit board that was provided with Stage 3:

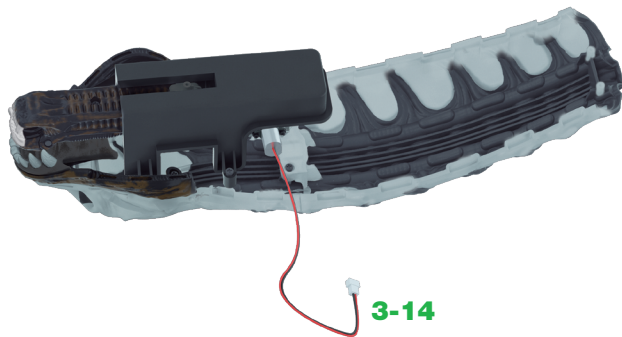
- A – Battery Cable Terminal
- B – Motor Cable Terminal
- C – LED Cable Terminal
- D – Button 1
- E – Button 2



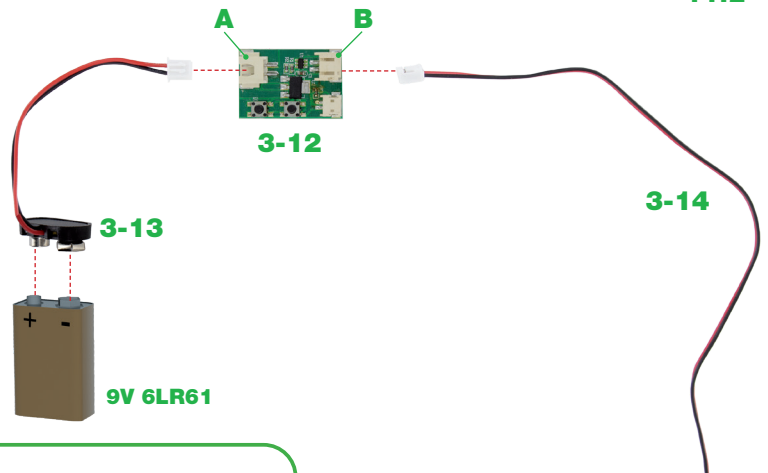
10

Take the Printed Circuit Board **3-12**, the Battery Connector **3-13** and the Skull assembly from the previous stage. Study the diagram above noting the position of the sockets and switches.

11.1



11.2

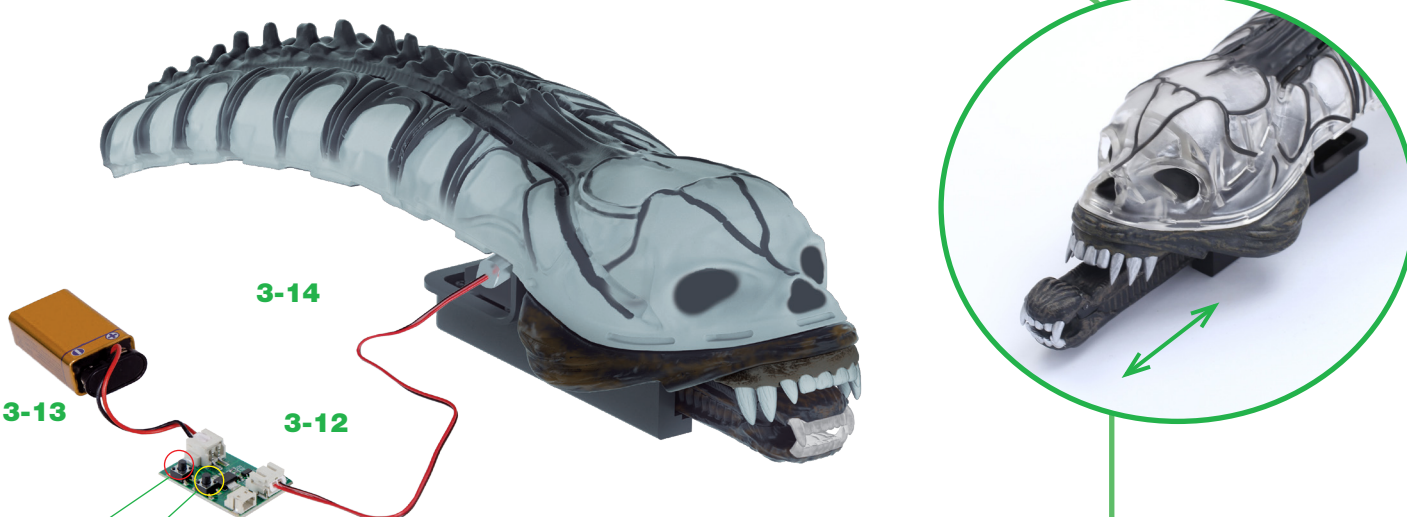


11

Place the entire skull, Circuit Board **3-12**, Battery Connector **3-13** on the work surface. The free end of the cable attached to the Motor **3-14** is connected to the Socket **B** on the right of the circuit board. The Battery Connector **3-13** is connected to Socket **A** which is on the left. Connect a 9V 6LR61 battery (not supplied) to the other end of the Battery Connector **3-13**, as shown.

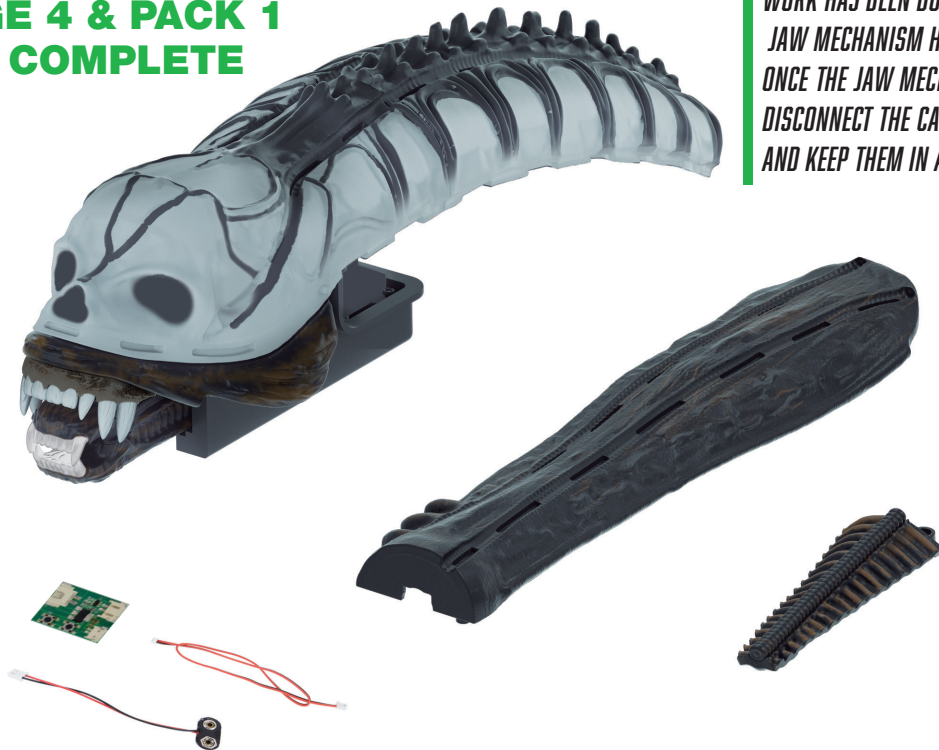
## STAGE 4: THE TIBIA & RETRACTABLE JAW

**12**



The Retractable Jaw can now be tested. When Button D (circled in red) is pressed the jaw should extend forwards. When Button E (circled in yellow) on Circuit Board 3-12 is pressed the jaw should retract.

## STAGE 4 & PACK 1 NOW COMPLETE



*WORK HAS BEEN DONE ON ONE OF THE SHINS AND THE JAW MECHANISM HAS BEEN TESTED. ONCE THE JAW MECHANISM HAS BEEN CHECKED, DISCONNECT THE CABLES, BATTERY AND CIRCUIT BOARD AND KEEP THEM IN A SAFE PLACE.*