

Ferrari

250 GTO



Pack 03

BUILD INSTRUCTIONS

**STAGE 15: THE LEFT CYLINDER HEAD
AND CAM COVER**

**STAGE 16: THE OTHER
CARBURETTORS**

STAGE 17: ENGINE BLOCK - LEFT SIDE

**STAGE 18: THE LOWER SECTION
OF THE ENGINE BLOCK**

**STAGE 19: : THE LOWER PANEL
AND OTHER COMPONENTS**

STAGE 20: THE FRONT SECTION OF THE BODY

Advice from the experts

To help you get the best out of building the Ferrari 250 GTO, we've prepared a modellers checklist with hints, tips and advice from our experts. The information below is aimed at making your build as enjoyable and professional as possible right from the start.

Have a soft cloth ready to place on your work surface to prevent scratching the paintwork.

Spare screws are included with each part. Occasionally, you may be instructed to keep spare or unused screws for a later stage. Keep these spares in a safe place and label them correctly.

Please make sure you don't mix up the screws. They look quite similar, but the threads do vary slightly. Using the wrong screws may damage the parts.

When securing parts together using multiple screws, fit each screw loosely to ensure all the parts are correctly aligned before gently tightening them firmly, but not overtight, in the order in which you placed them.

The screwdriver can be magnetized by stroking it with a magnet (fridge magnet, etc.) enabling it to hold the screws and make assembly easier.

If a screw is tight going into a metal part, do not force it as you may shear the head off. Remove it and put a tiny smear of Vaseline, soap or light oil on the thread. That will lubricate it and make it easier to drive home.

Only use the correct size screwdriver that fits the screw head firmly.

Use a magnet to help find screws that have fallen on the floor.

Use masking tape to hold parts temporarily in place.

Cut parts from a sprue (framework) with side cutters or a craft knife. Side cutters tend to be easiest.

During the course of this build, you will receive many pieces that you will assemble immediately – following the instructions in the corresponding stage – and other pieces that you should store safely to one side, for use in future assembly stages.

Left and Right! When building your *Ferrari 250 GTO*, the left- or right-hand side refers to that side as if you are sitting in the car.



WARNING: Some parts are assembled using magnets. These magnets can cause serious injury if they are swallowed. Keep away from children. If you suspect a magnet has been swallowed, seek medical help straight away.

All parts belong to a kit. Collectors item for adults.

Not suitable for children under 14.

Produced under license of Ferrari S.p.A. The name FERRARI, the PRANCING HORSE device, all associated logos and distinctive designs are property of FERRARI S.p.A. The body designs of the Ferrari cars are protected as Ferrari S.p.A. property under design, trademark and trade dress regulations.

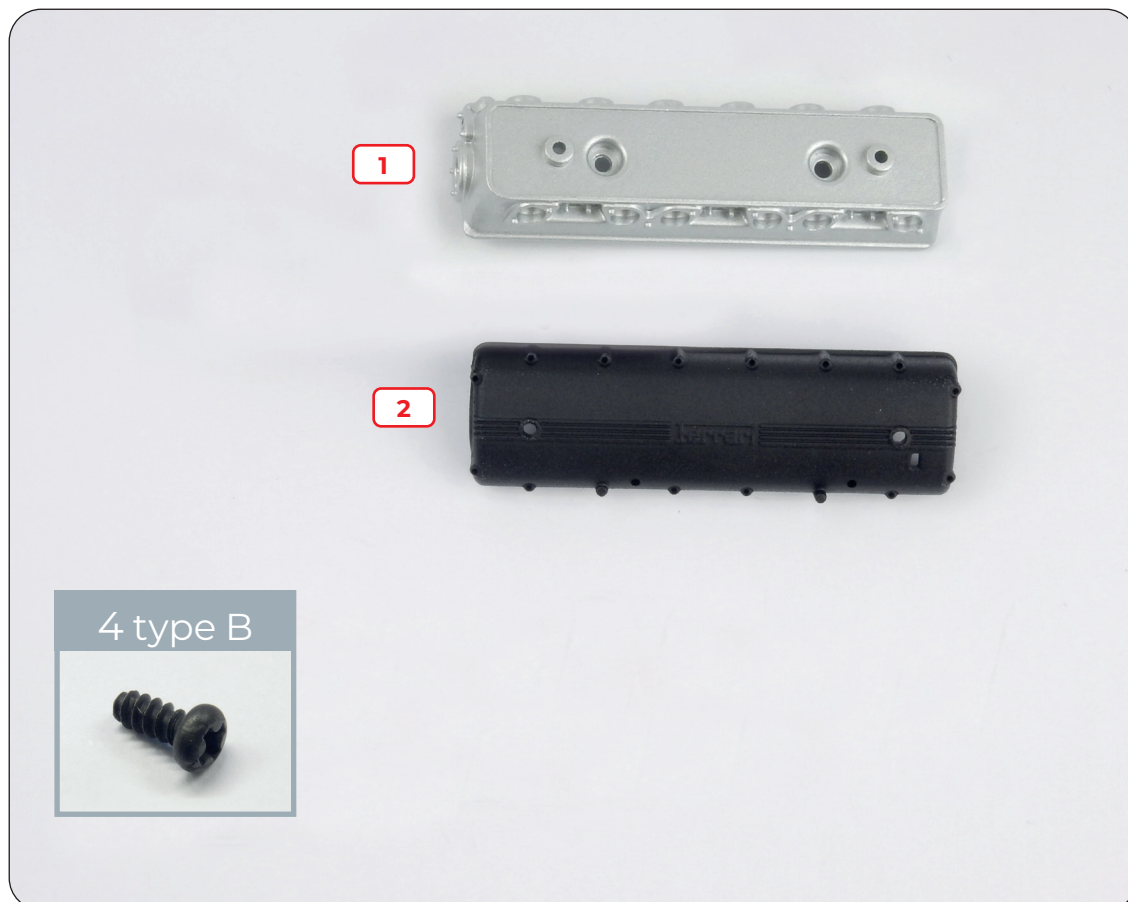
Stage 15: The Left Cylinder Head And Cam Cover

In this stage you'll build the left cam cover and add it to the cylinder head, to which you'll also add the distributor that you assembled in stage 07.

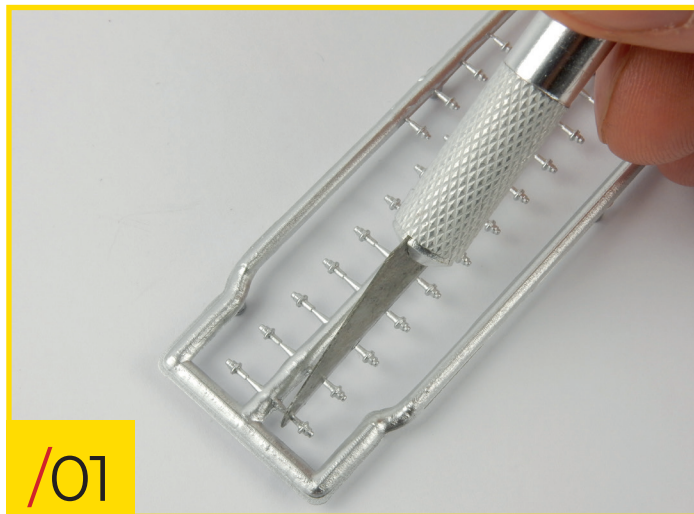


STAGE 15 PARTS LIST

Name	Name
1 Left cylinder head	4 type B screws
2 Left cam cover	

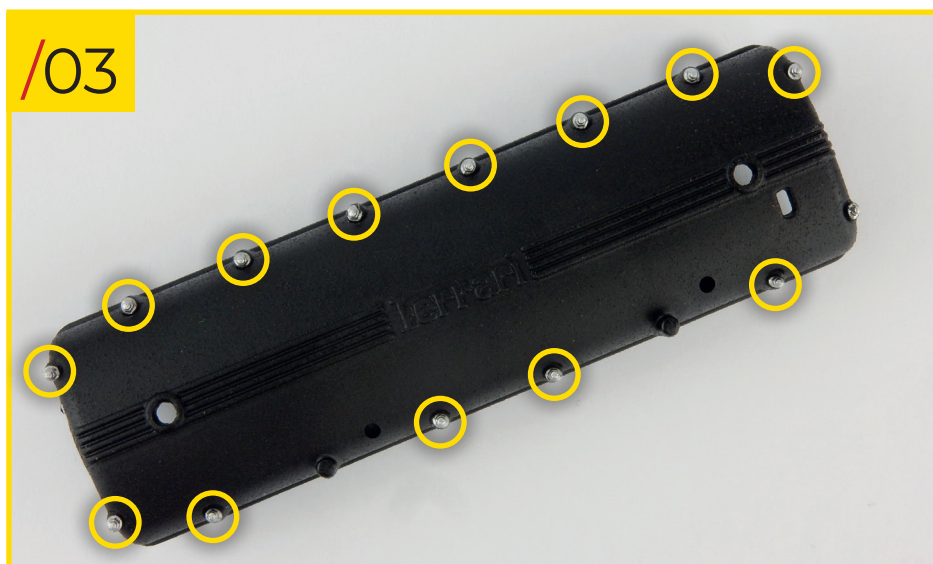


Stage 15: The Left Cylinder Head And Cam Cover



15/01 Using a suitable cutting tool, detach a bolt from the sprue you received with stage 08. We recommend only detaching the bolts as you require them, so as to not risk losing them.

15/02 Put the bolt in one of the holes on the outer edge of the left cam cover. If you wish, you can put a drop of glue inside the hole before inserting the bolt.



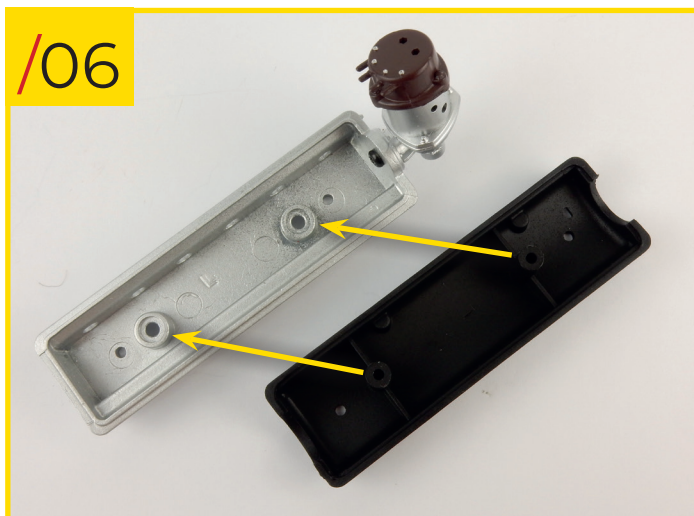
15/03 Repeat the previous steps to insert another 13 bolts into the cam cover.

Stage 15: The Left Cylinder Head And Cam Cover



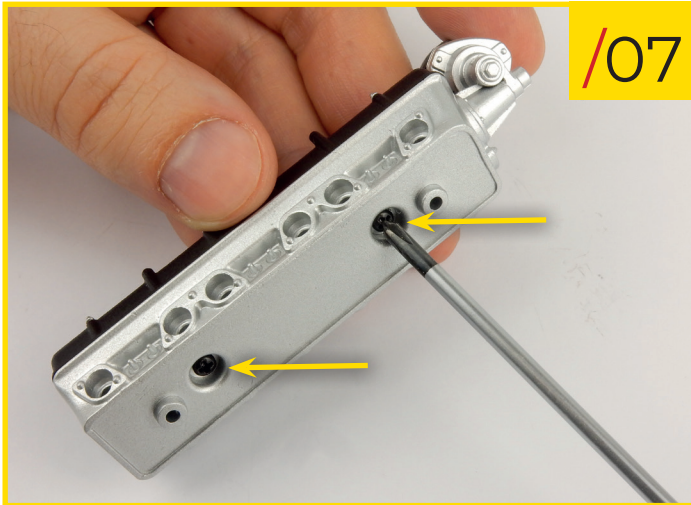
15/04 Retrieve the distributor that you assembled in stage 07 and fit it to the left cylinder head, orientate the pieces as shown in the photo.

15/05 Secure the distributor to the cylinder head using a type B screw.

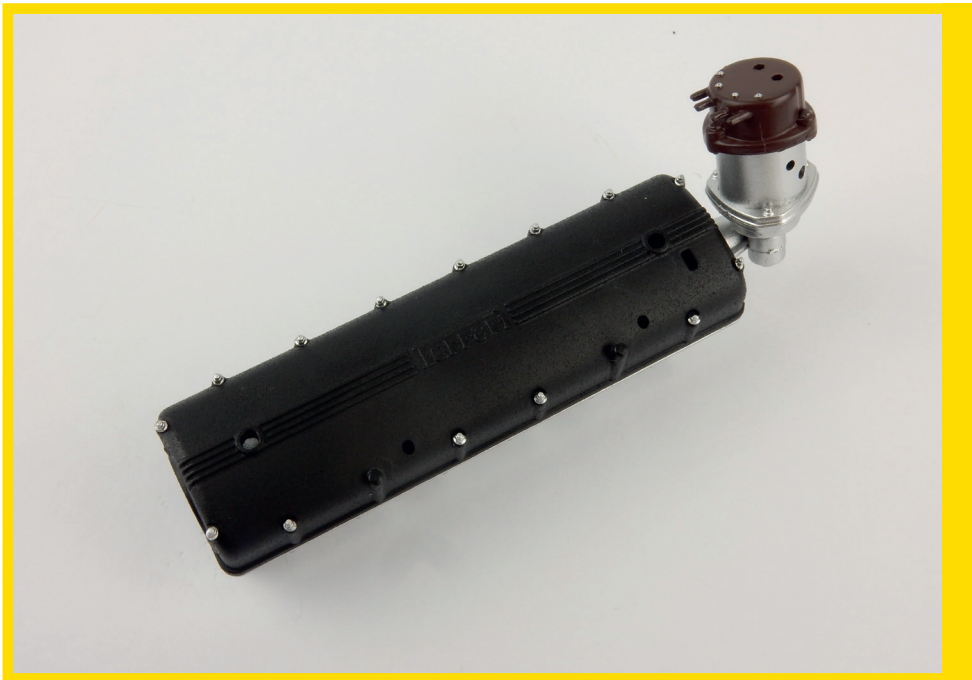


15/06 Fit the cam cover to the cylinder head. Use the photo and the shape of the pieces to ensure you orientate them correctly.

Stage 15: The Left Cylinder Head And Cam Cover



15/07 Secure the cam cover to the cylinder head by screwing two type B screws into the holes shown in the photo.



STAGE 15 IS COMPLETE
Here's how the left cylinder head looks at the end of this assembly stage. Put the unused bolts somewhere safe.

Stage 16: The Other Carburettors

Similar to what you did in stage 09, in this stage you'll assemble the remaining carburettors in the engine.



STAGE 16 PARTS LIST

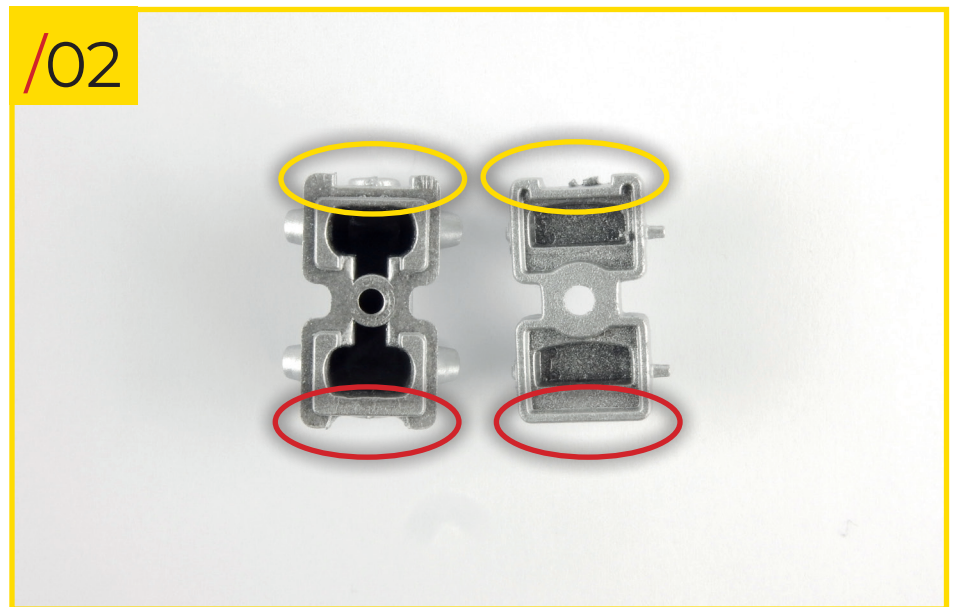
Name	Name
1 Carburettor trumpets	4 Central sections of the carburettors
2 Carburettor connectors	5 Upper sections of the carburettors
3 Lower sections of the carburettors	3 type B screws



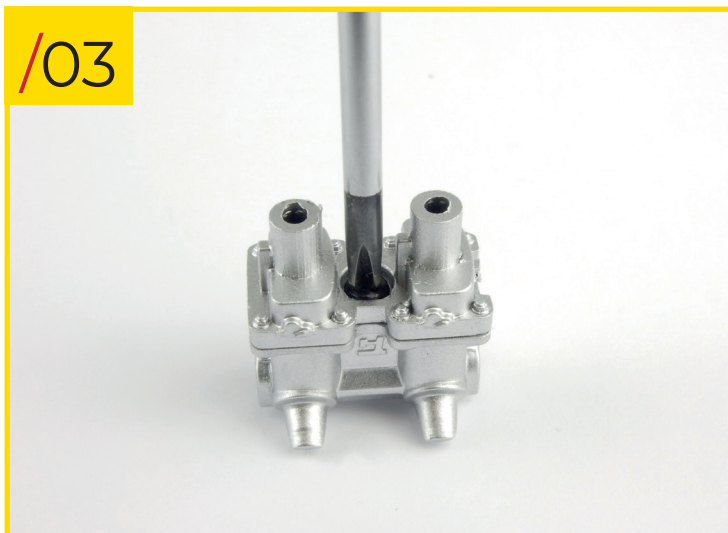
Stage 16: The Other Carburettors



16/01 Place a carburettor connector and a lower section of the carburettors on your workbench.

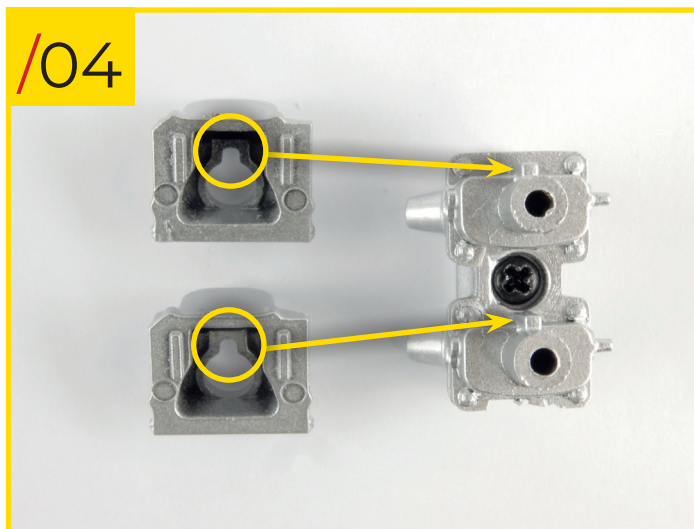


16/02 Fit the two components together. Due to the shape of their outline, there is only one way to fit them together.



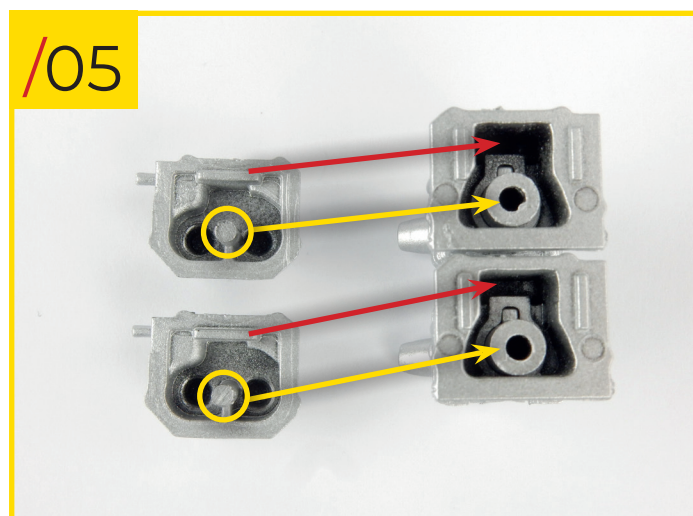
16/03 Secure the pieces together using a type B screw.

Stage 16: The Other Carburetors



16/04 Fit two central sections of the carburetors to the previously assembled section. Again, there is only one way to fit them together.

16/05 Now fit two upper sections of the carburetors to the central sections you just added.

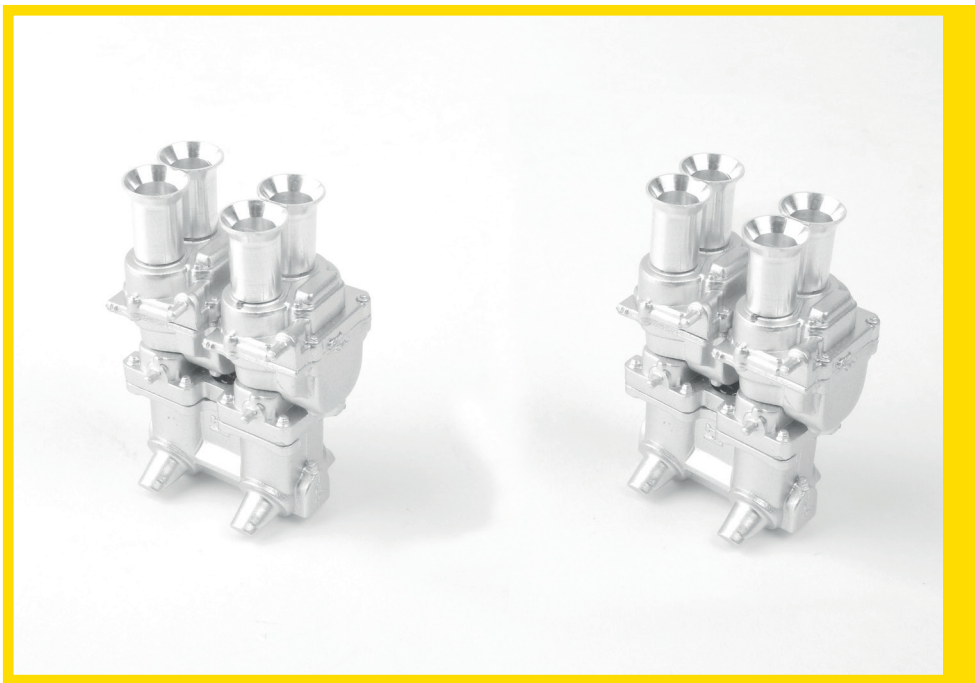


16/06 Fit four carburetor trumpets to the upper sections of the carburetors. The top part has a flat edge on the rim allowing them to butt up to each other.

Stage 16: The Other Carburetors



16/07 Repeat the previous steps to assemble another pair of carburetors using the parts you've been given with this stage.



STAGE 16 IS COMPLETE
Here's how the two pairs of carburetors that you built in this assembly stage look. Put them in a safe place together with the one you assembled in stage 09.

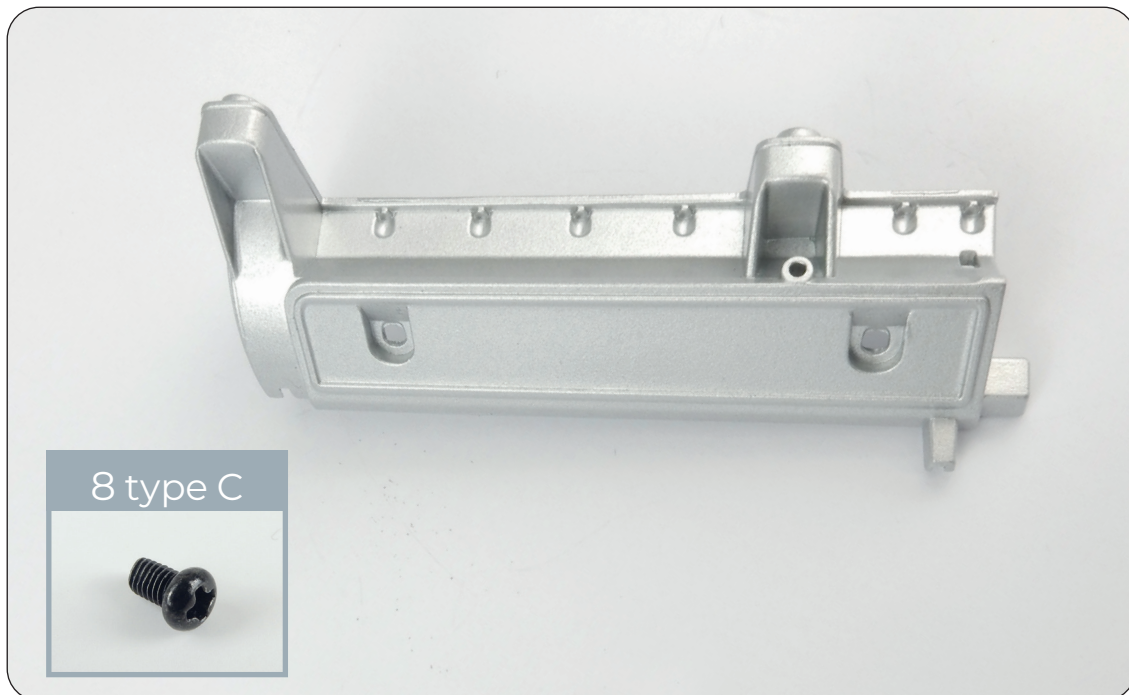
Stage 17: Engine Block – Left Side

In this assembly stage you'll fit the left cylinder head to the engine block and join the two engine blocks together using the three pairs of carburetors.

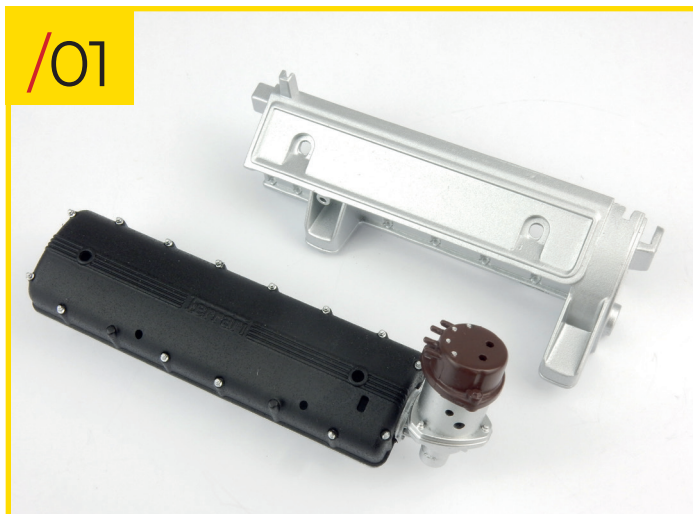


STAGE 17 PARTS LIST

Name	Name
1 Left side of the engine block	8 type C screws

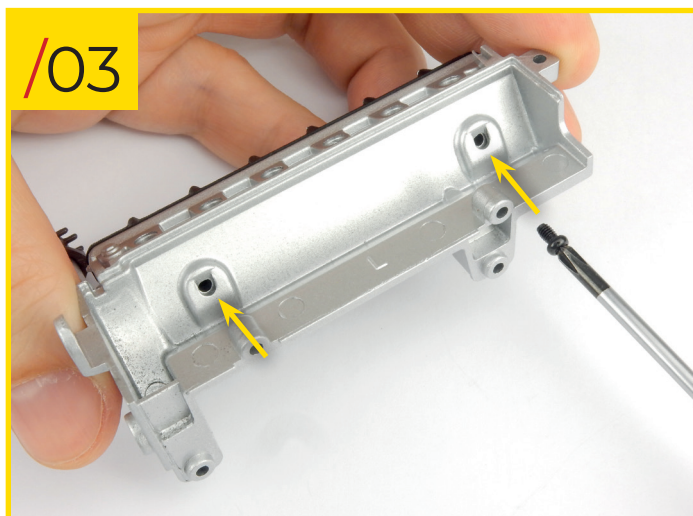
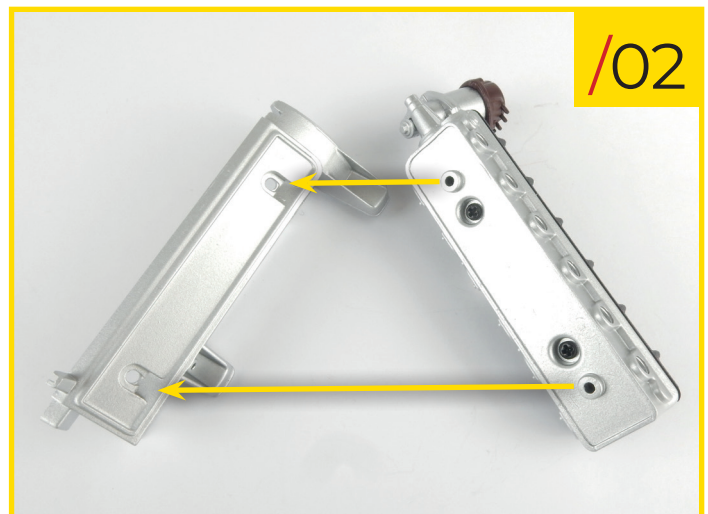


Stage 17: Engine Block – Left Side



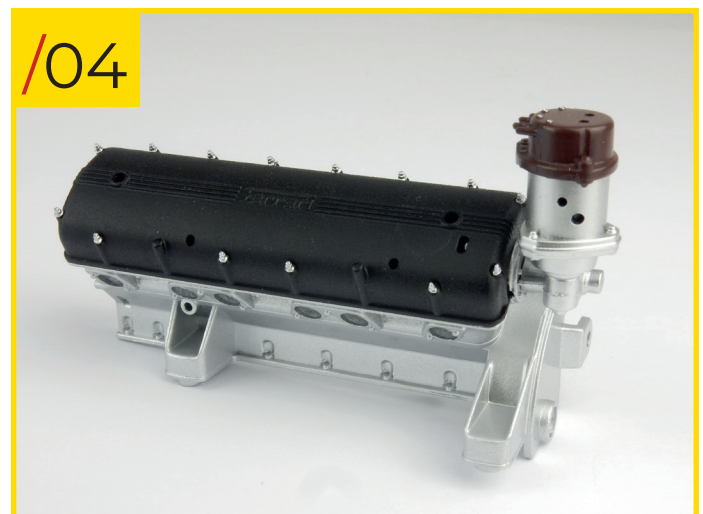
17/01 Place the left side of the engine block and the left cylinder head, which you assembled in stage 15, on your workbench.

17/02 Fit the two pieces together, orientating them as shown in the photo.

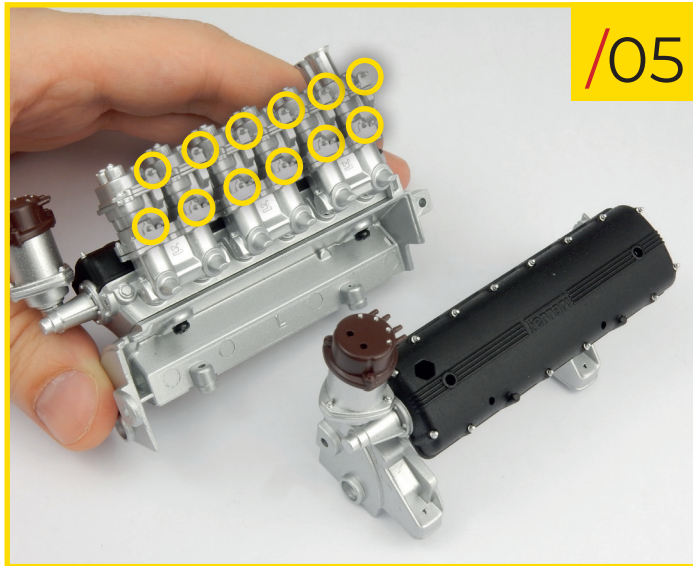


17/03 Secure them together using two type C screws.

17/04 Look at the photo to check that you've fixed the two components together correctly.

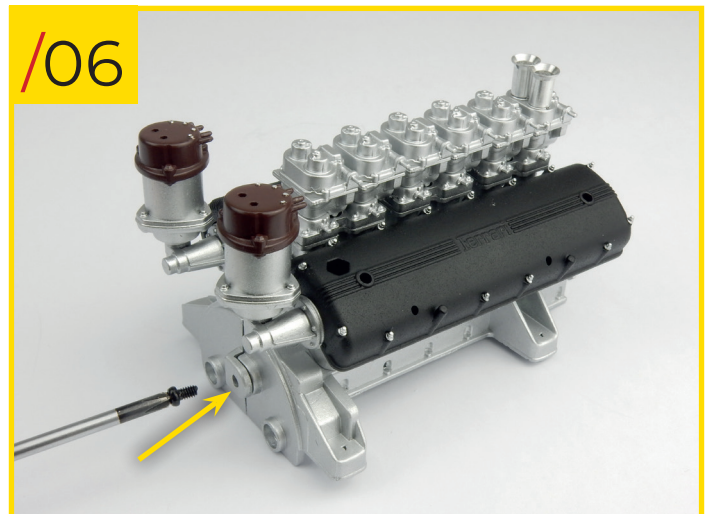


Stage 17: Engine Block – Left Side

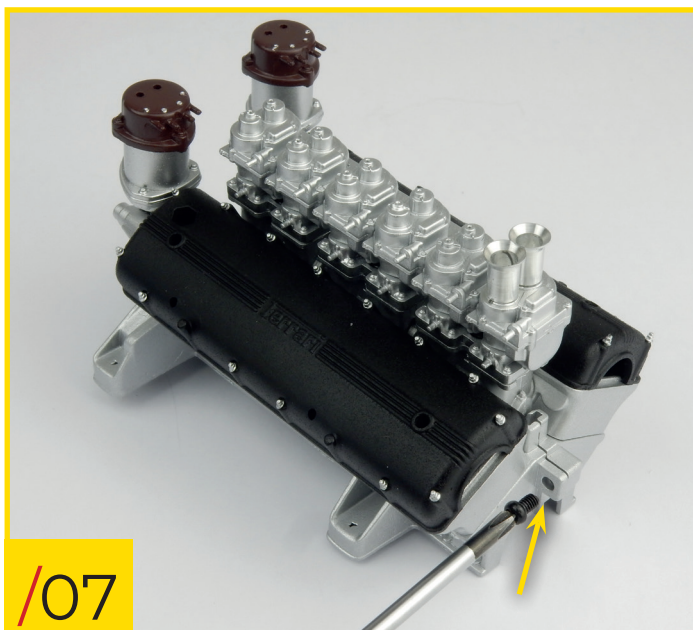


17/05 Retrieve the three pairs of carburettors and fit them to the left cylinder block, orientate the components as shown. So as not to damage them, we recommend that you temporarily remove the carburettor trumpets. You can see one of the pairs in the photo, this will help you with the orientation. There are a series of pins located on the side of the carburettor, they've been highlighted in the photo with yellow circles. These pins should be orientated outwards, towards the right cylinder block.

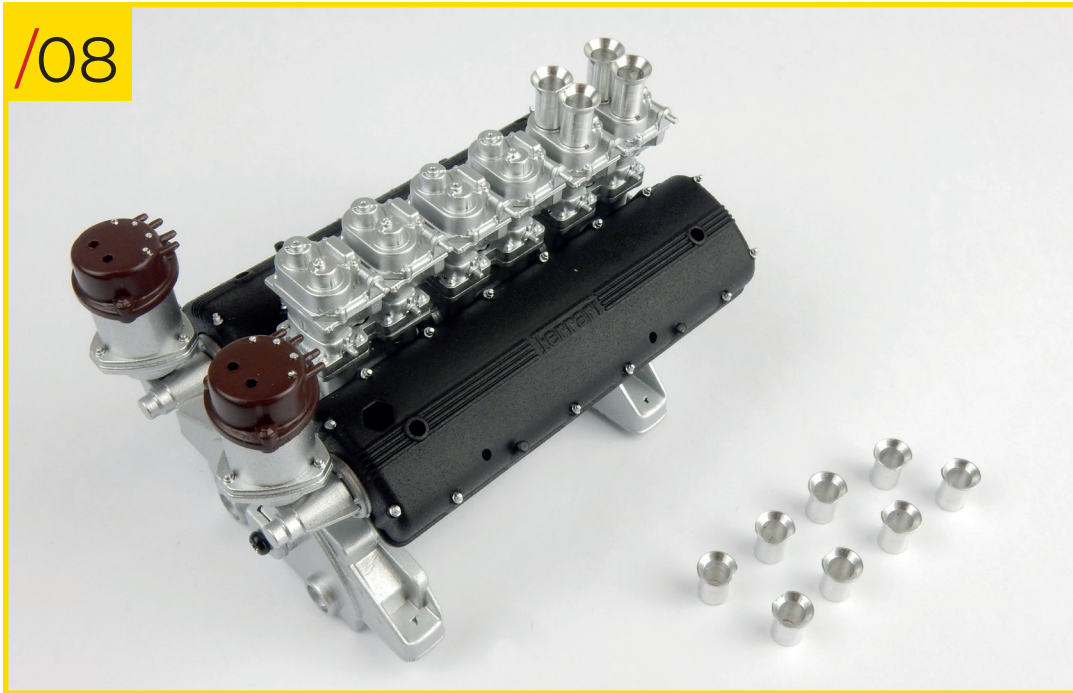
17/06 Add the right side of the engine block to the assembly, use the photo and the shape of the pieces to ensure you orientate them correctly. Screw a type C screw into the hole indicated.



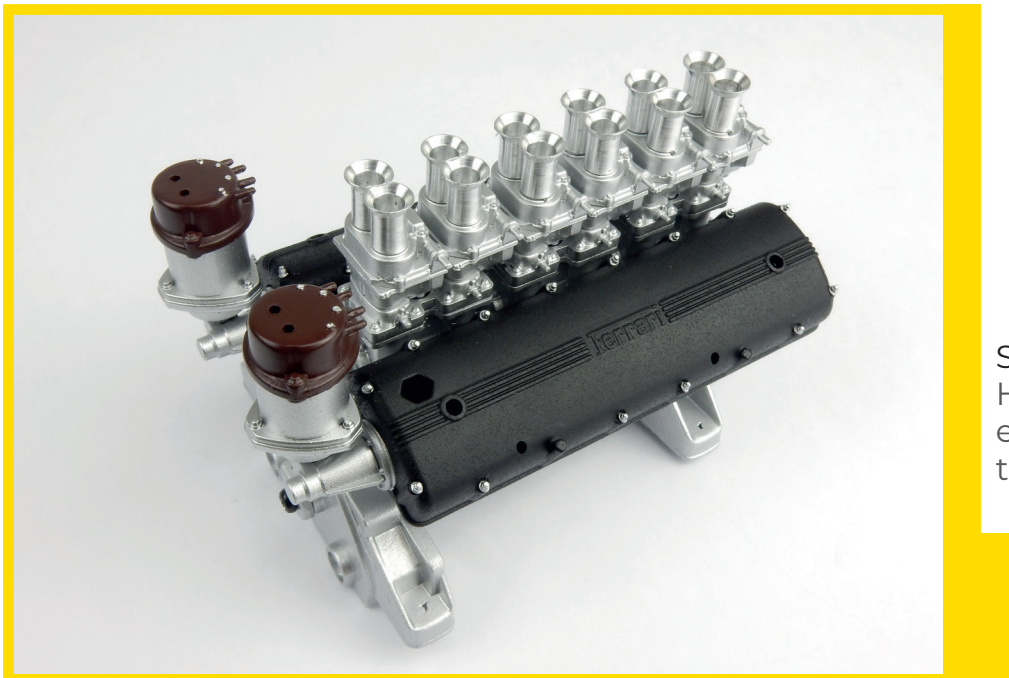
17/07 On the opposite side of the assembly, screw a type C screw into the hole indicated.



Stage 17: Engine Block – Left Side



17/08 Reattach the carburettor trumpets that you removed in step 05 to their original positions.



STAGE 17 IS COMPLETE
Here's how your model's engine looks at the end of this assembly phase.

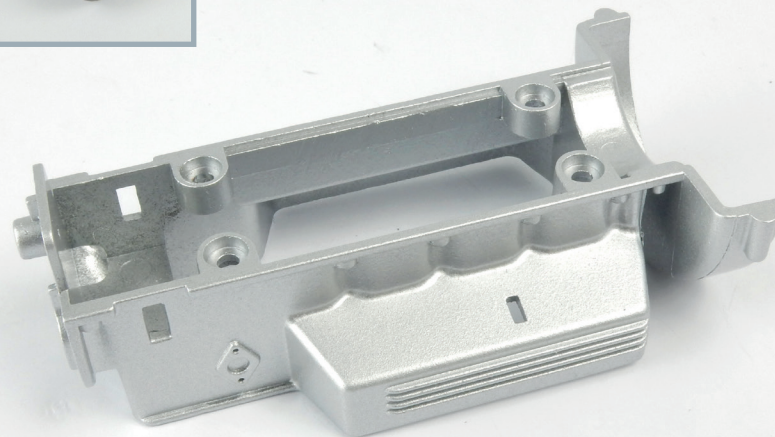
Stage 18: The Lower Section Of The Engine Block

In this assembly phase you'll fit the gearbox-clutch housing assembly to the engine block. You'll then combine the engine block with its lower section.



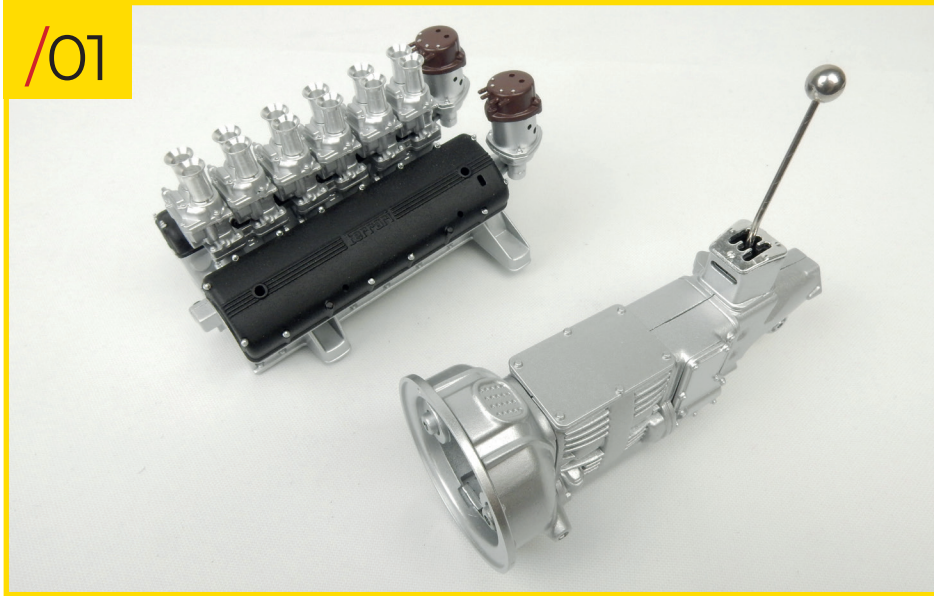
STAGE 18 PARTS LIST

Name	Name
1 Lower section of the engine block	5 type C screws



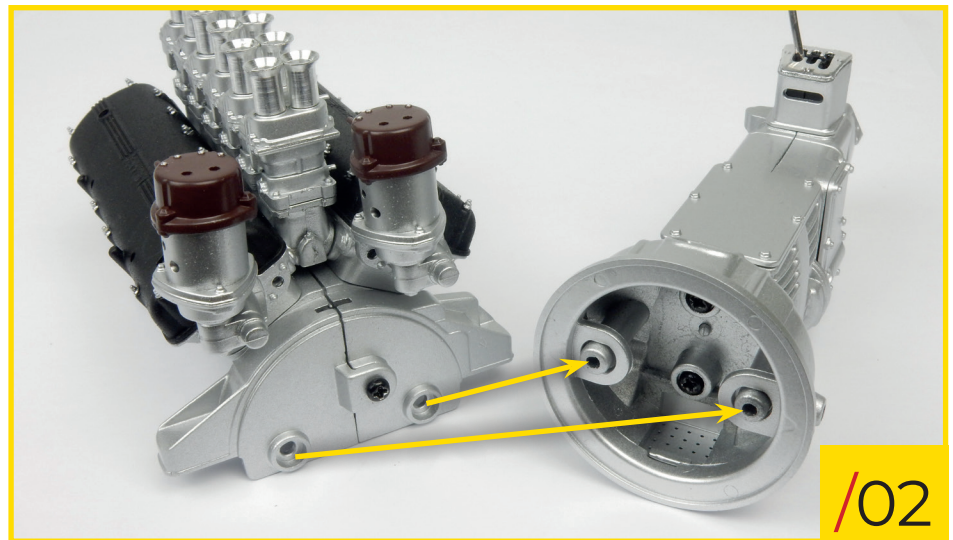
Stage 18: The Lower Section Of The Engine Block

/01



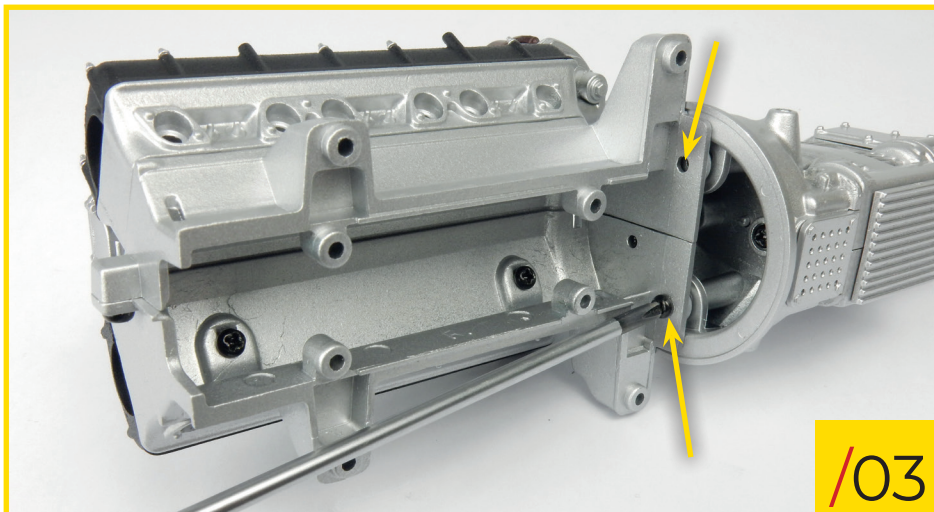
18/01 Retrieve the engine block and the gearbox-clutch housing assembly that you assembled in pack 1.

18/02 Fit the assemblies together, orientating them as shown in the photo.



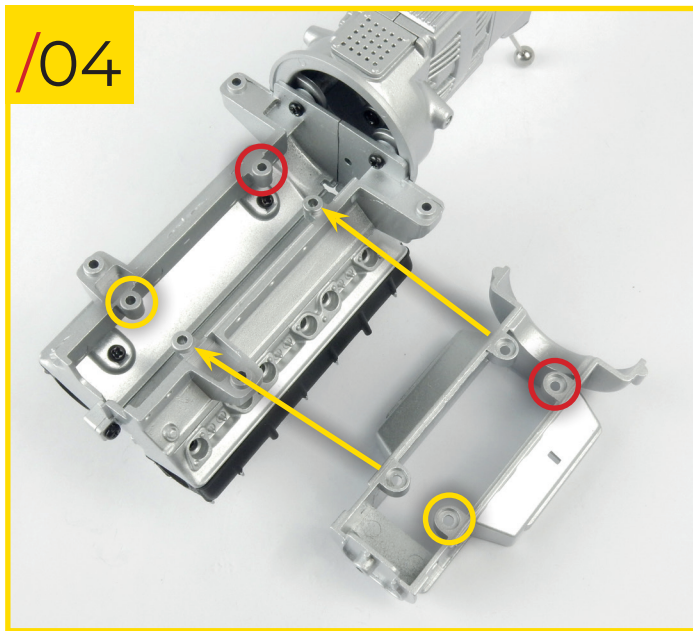
/02

18/03 Secure them together using two of the type C screws you received with stage 17.



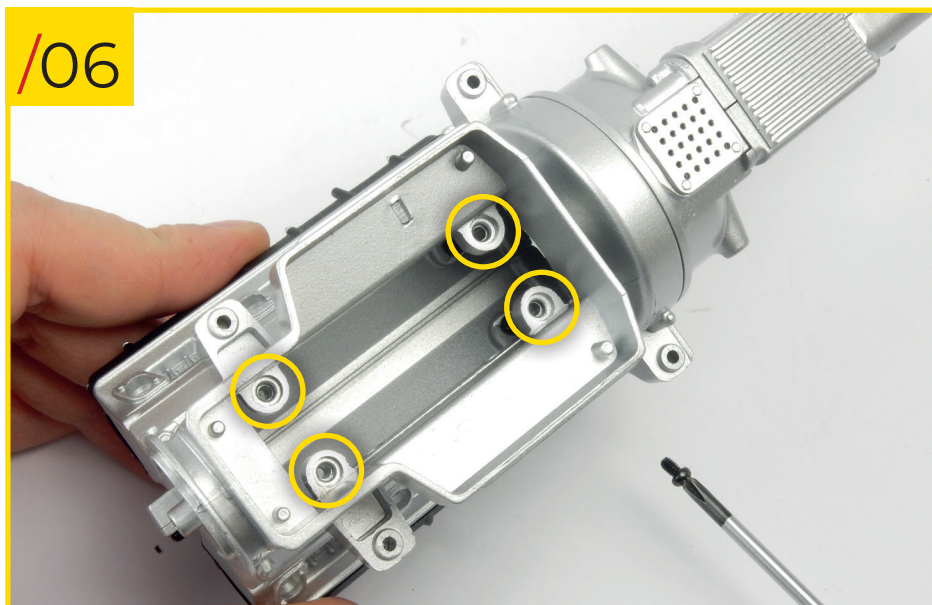
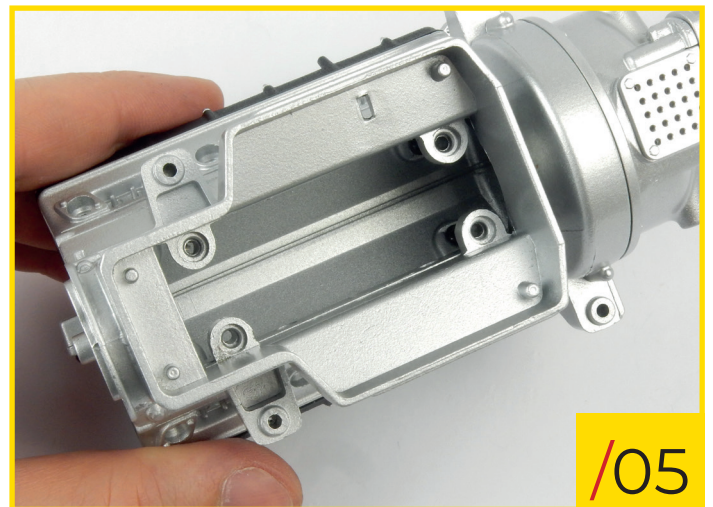
/03

Stage 18: The Lower Section Of The Engine Block



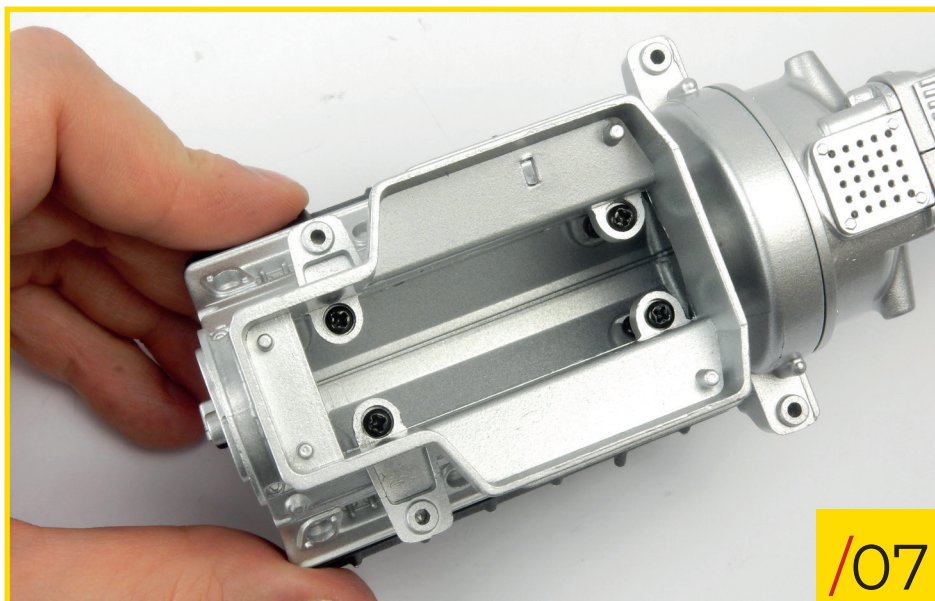
18/04 Add the lower section of the engine block to the rest of the assembly, orientate the pieces as shown.

18/05 Look at the photo to check that you've fixed the components together correctly.

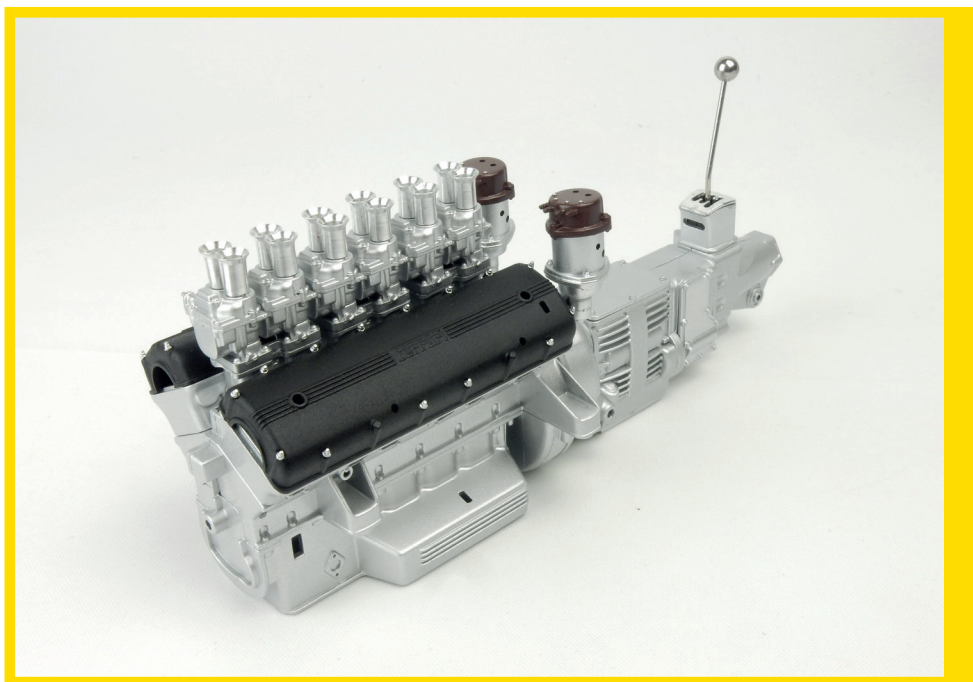


18/06 Secure it all together using four of the type C screws you received with this stage.

Stage 18: The Lower Section Of The Engine Block



18/07 Tighten the four screws to firmly secure the engine block to its lower section.



STAGE 18 IS COMPLETE
Here's how the engine looks at the end of this stage.

Stage 19: The Lower Panel And Other Components

In this stage you'll fit the engine block's lower panel and four cam cover knobs to the engine block. Keep the other pieces that you've received with this stage in a safe place.

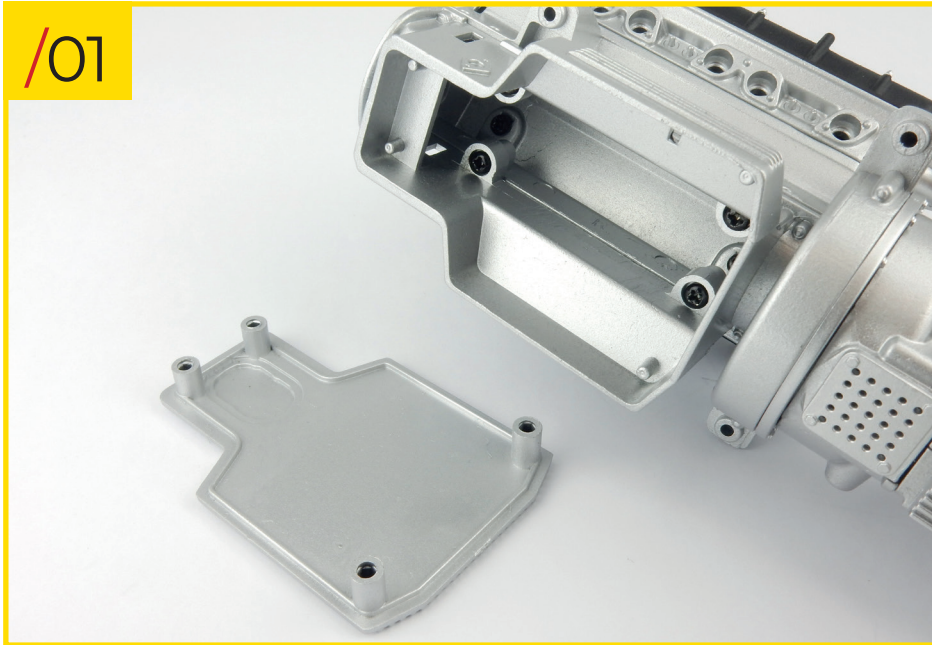


STAGE 19 PARTS LIST

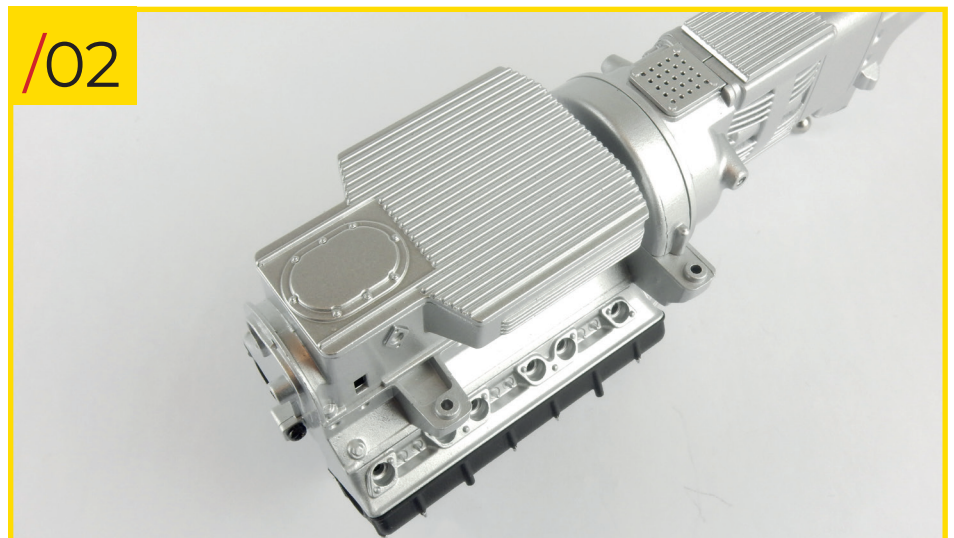
Name
1 Lower panel of the engine block
2 Cam cover knobs
3 Lateral distributor components
4 Distributor cap connectors



Stage 19: The Lower Panel And Other Components



19/01 Place the engine block and its lower panel on your workbench.

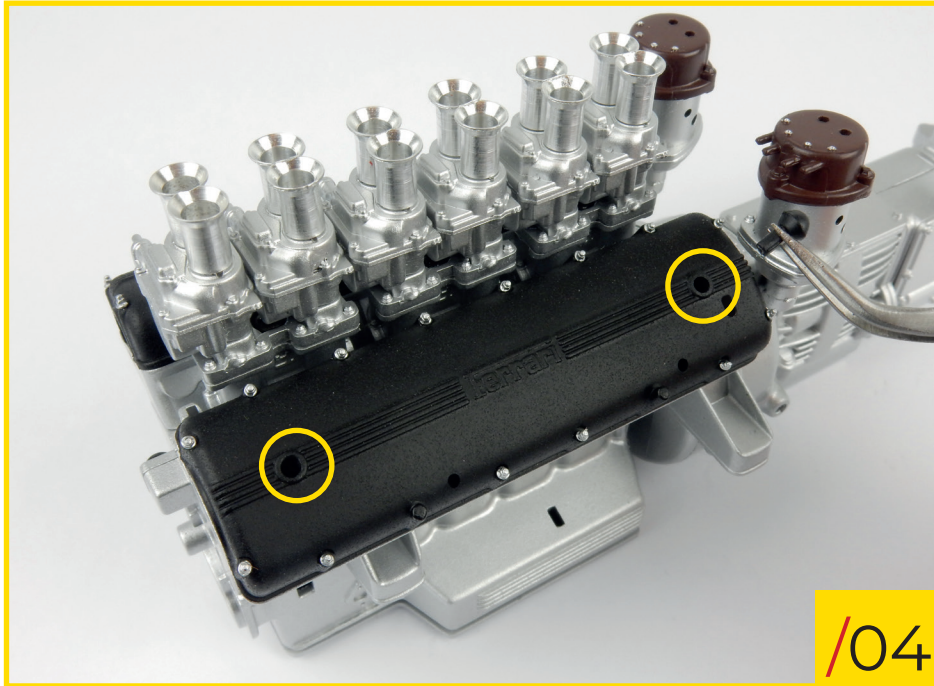


19/02 Using some light pressure, fit the lower panel to the engine block. Orientate the pieces as shown.



19/03 Using a suitable cutting tool, detach the four knobs from their sprue.

Stage 19: The Lower Panel And Other Components

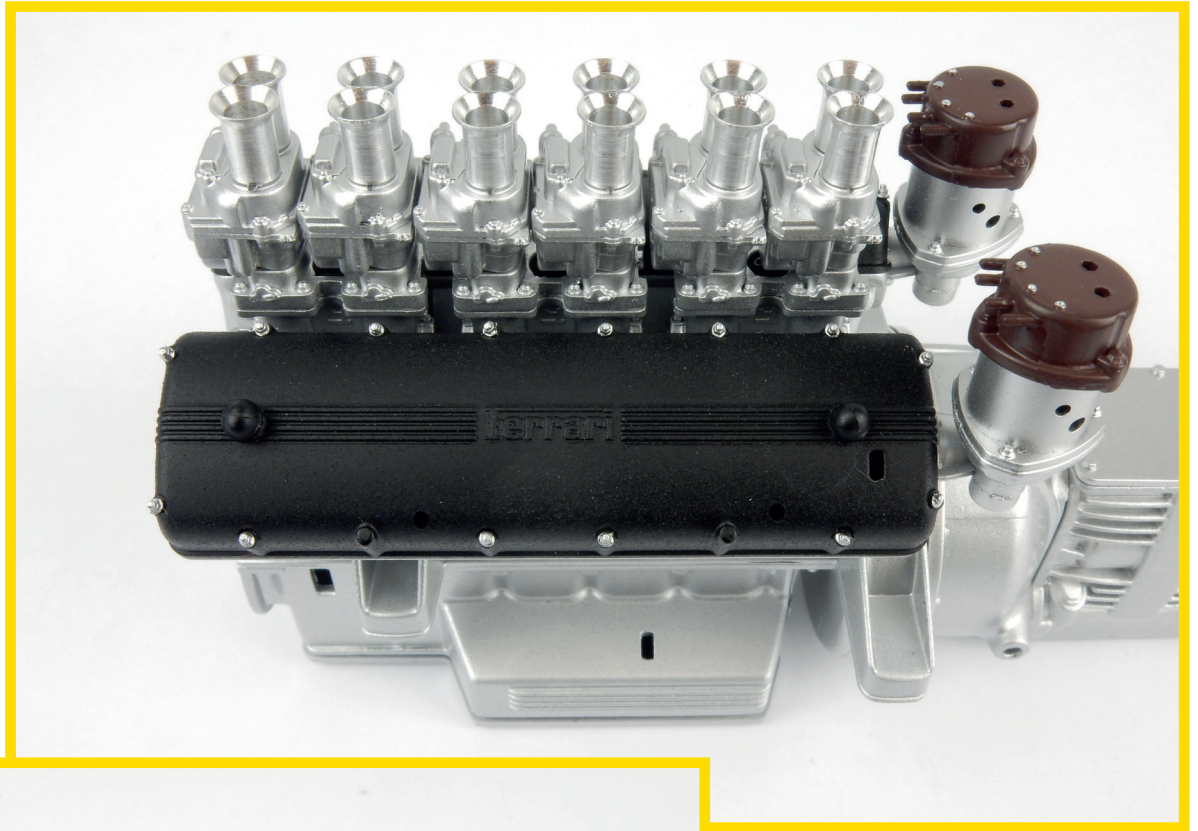


19/04 Insert two of the knobs into the holes in the left cam cover, the holes are circled in yellow in the photo.

19/05 Use the same approach to insert the remaining two knobs into the right cam cover.



Stage 19: The Lower Panel And Other Components



19/06 Here's how the two cam covers look with the four cam cover knobs added.

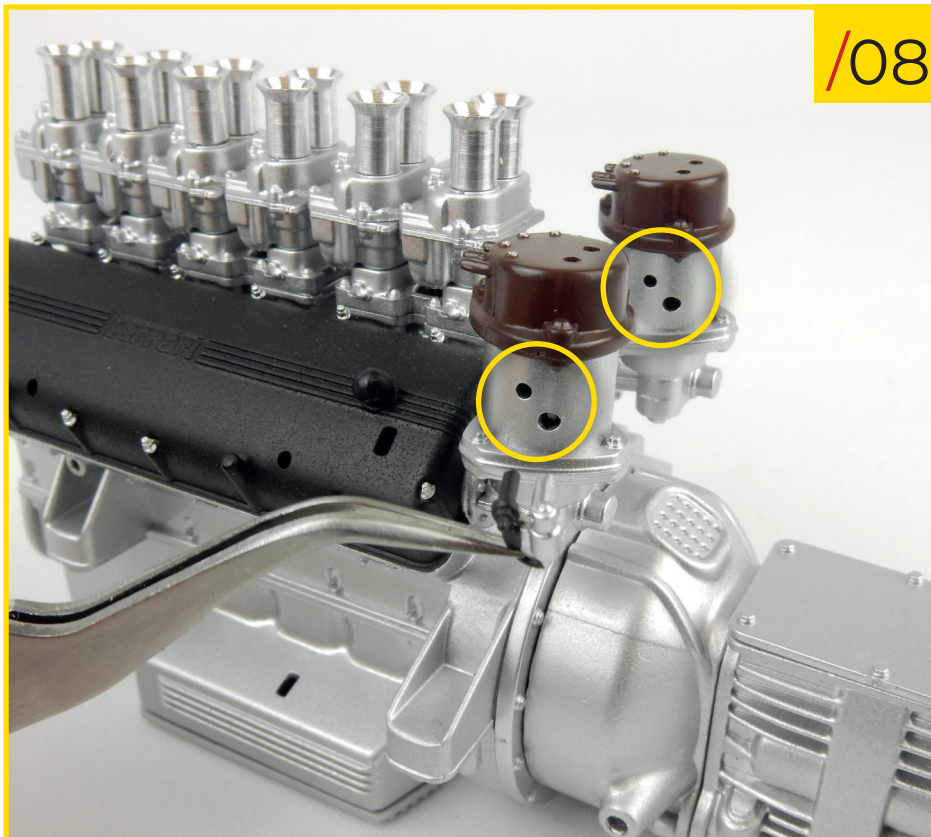
Stage 19: The Lower Panel And Other Components

/07



19/07 Take the two lateral distributor components.

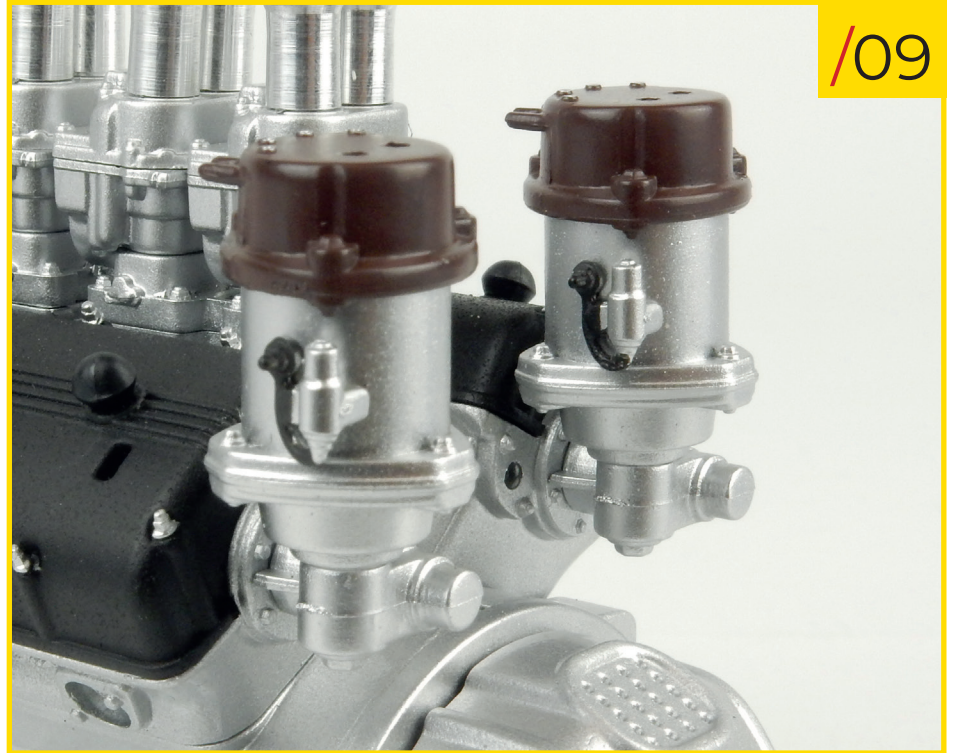
/08



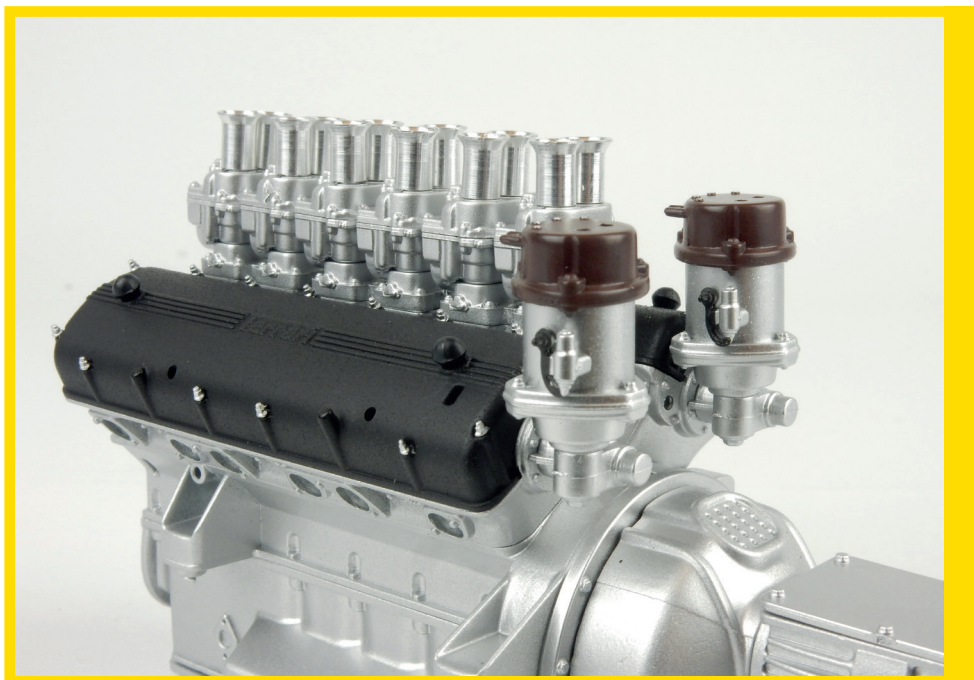
19/08 Using a pair of tweezers, insert the two lateral distributor components into the holes in the distributors, circled in the photo. Some light pressure will need to be applied.

Stage 19: The Lower Panel And Other Components

19/09 Look at the photo carefully to check that you've installed the two components correctly.



STAGE 19 IS COMPLETE
Here's how your model's engine block looks with the lateral distributor components correctly installed.



Stage 20: The Front Section Of The Body

There is no assembly in this stage.
Keep the front section of the body
in a safe place until required.



STAGE 20 PARTS LIST

Name
1 Front section of the body

