

**NO  
TIME  
TO  
DIE** *007<sup>™</sup>*

**DB5**



# Pack 02

## BUILD INSTRUCTIONS

**STAGE 008: ASSEMBLING THE  
CYLINDER HEAD**

**STAGE 013: BUILDING THE  
ALTERNATOR AND ENGINE  
DISTRIBUTION COVER**

**STAGE 009: INSTALLING THE SPARK PLUGS**

**STAGE 014: FITTING THE LEFT SIDE  
OF THE CYLINDER HEAD AND ENGINE  
DISTRIBUTION COVER**

**STAGE 010: BUILDING THE CARBURETTORS**

**STAGE 011: FITTING THE CARBURETTORS**

**STAGE 015: BUILDING AND ATTACHING  
THE GEARBOX**

**STAGE 012: ATTACHING THE EXHAUST  
MANIFOLDS AND ASSEMBLING THE  
CYLINDER HEAD**

NO TIME TO DIE © Danjaq, LLC and Metro-Goldwyn-Mayer Studios Inc. NO TIME TO DIE, *007<sup>™</sup>* and related James Bond Indicia © 1962-2023 Danjaq, LLC and Metro-Goldwyn-Mayer Studios Inc. NO TIME TO DIE, *007<sup>™</sup>* and related James Bond Trademarks are trademarks of Danjaq, LLC. All Rights Reserved.



Aston Martin, the Aston Martin Wings logo and the model name "DB5" are trademarks owned, licensed or used by Aston Martin Lagonda Limited. All Rights Reserved.

AGORAMODELS.  
**JAMES BOND**  
—COLLECTION—

## Advice from the experts

---

Spare screws are included with each part. Occasionally, you may be instructed to keep spare or unused screws for a later stage. Keep these spares in a safe place and label them correctly.

Please make sure you don't mix up the screws. They look quite similar, but the threads do vary slightly. Using the wrong screws may damage the parts.

When securing parts together using multiple screws, fit each screw loosely to ensure all the parts are correctly aligned before gently tightening them firmly, but not overtight, in the order in which you placed them.

The screwdriver can be magnetized by stroking it with a magnet (fridge magnet, etc.) enabling it to hold the screws and make assembly easier.

If a screw is tight going into a metal part, do not force it as you may shear the head off. Remove it and put a tiny smear of Vaseline, soap or light oil on the thread. That will lubricate it and make it easier to drive home.

During the course of this build, you will receive many pieces that you will assemble immediately – following the instructions in the corresponding stage – and other pieces that you should store safely to one side, for use in future assembly stages.

Left and Right! When building your *No Time To Die* Aston Martin DB5, the left- or right-hand side refers to that side as if you are sitting in the car.



**WARNING:** Some parts are assembled using magnets. These magnets can cause serious injury if they are swallowed. Keep away from children. If you suspect a magnet has been swallowed, seek medical help straight away.

# Stage 008: Assembling the Cylinder Head

In this stage you'll assemble the cylinder head by fitting the cam shafts and covers. You'll also attach the oil filler cap and neck.



## STAGE 008 PARTS LIST

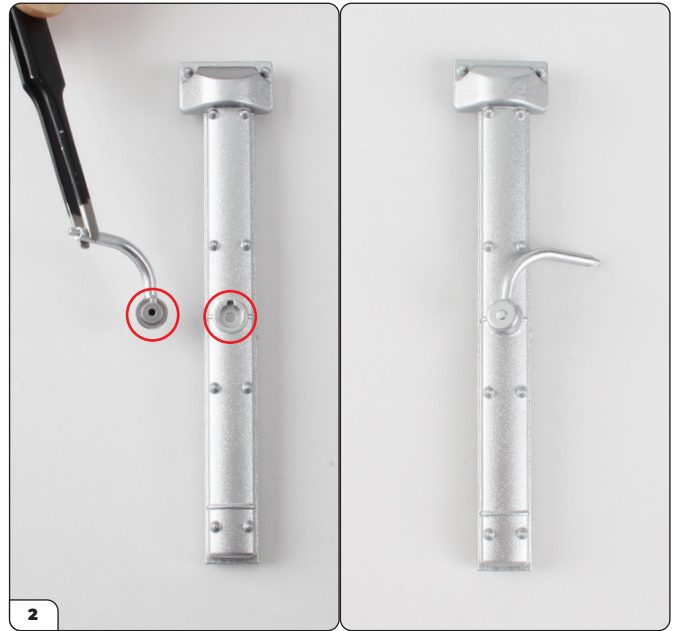
Name	Name
8-A Right cam cover	8-G Oil filler neck
8-B Right cam shaft	8-H Oil filler cap
8-C Cylinder head (upper part)	8-I Left cam cover breather pipe
8-D Left cam shaft	8-J Right cam cover breather pipe
8-E Left cam cover	PS01 screw x3
8-F Cylinder head part x2	



## Stage 008: Assembling the Cylinder Head



The cam covers are marked with 'L' (8-E) and 'R' (8-A) to differentiate the left from the right.



Take the cam cover marked 'R' and right cam cover breather pipe (8-J). Note the shaped fittings. Fit the pipe in place as shown.



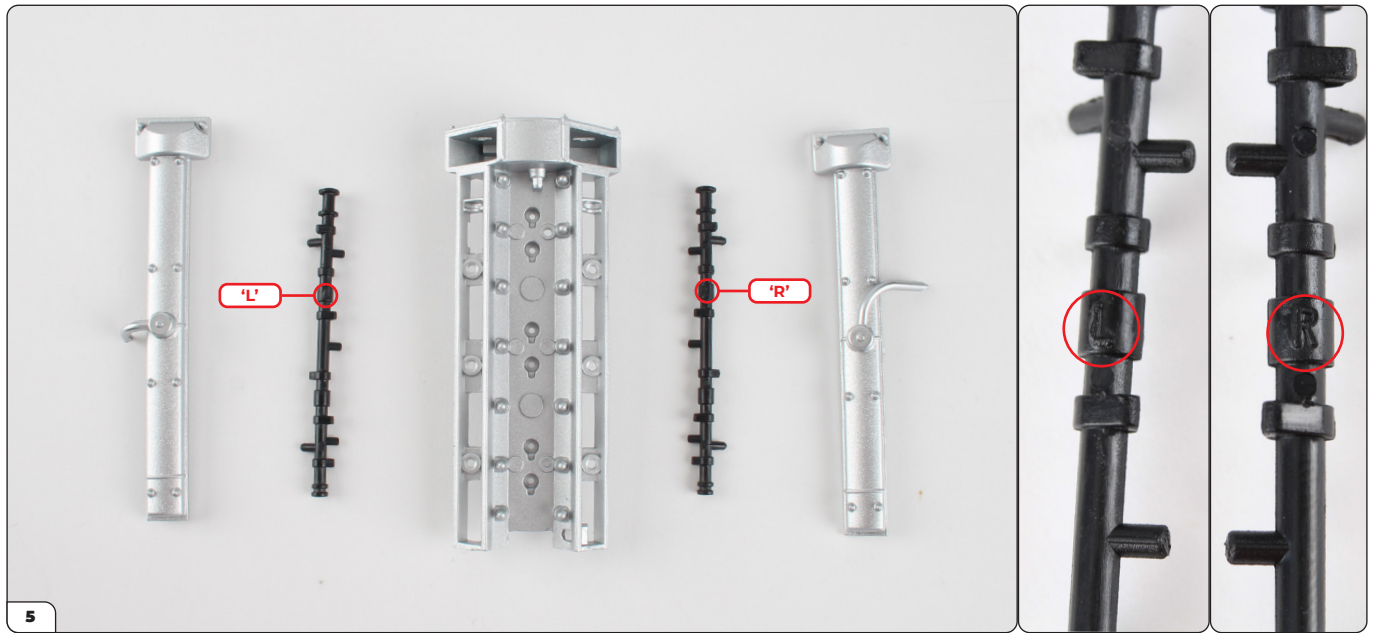
Secure the right cam cover pipe from underneath using a PS01 screw.



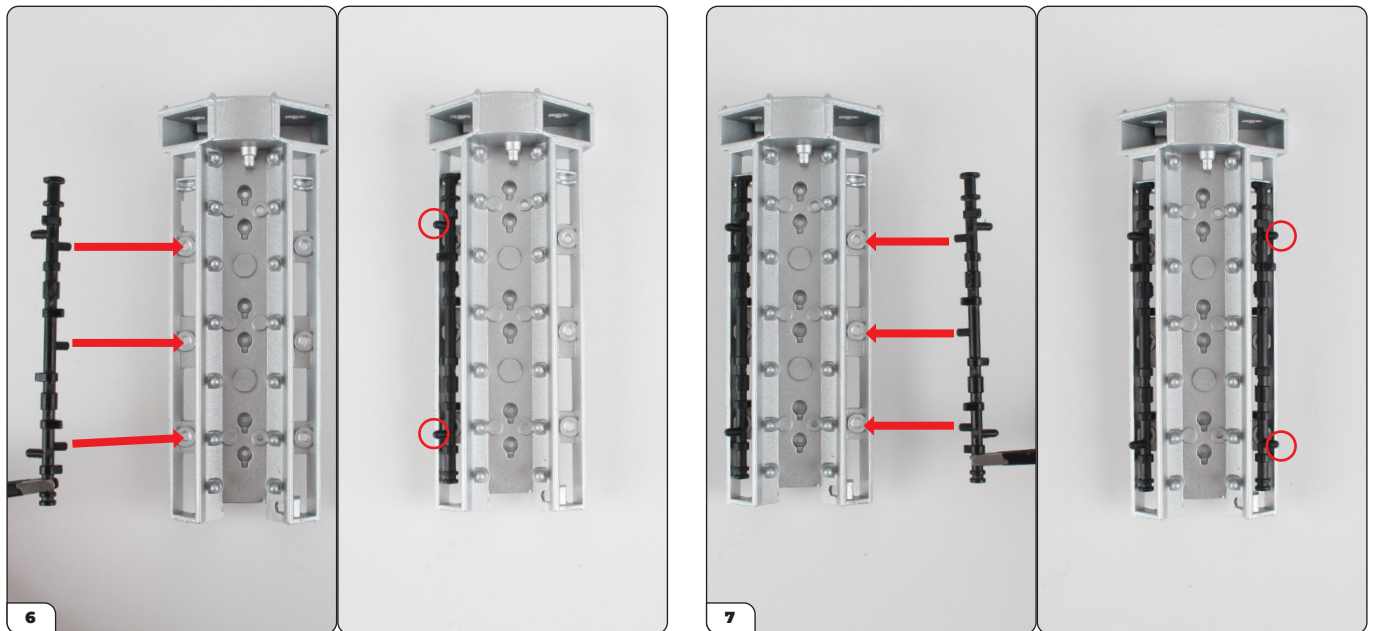
Fit the left cam cover breather pipe (8-I) to the left cam cover and secure using a PS01 screw.



## Stage 008: Assembling the Cylinder Head



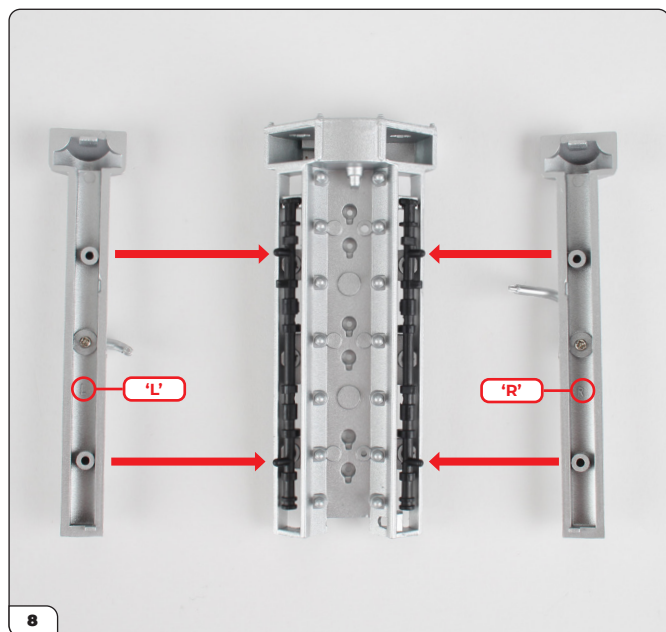
Arrange the left and right cam covers and the left and right cam shafts (8-B and 8-D) with the cylinder head as shown.



Fit the left shaft to the cylinder head. Ensure the two pins (circled) are facing outwards as shown.

Fit the right shaft in the same way.

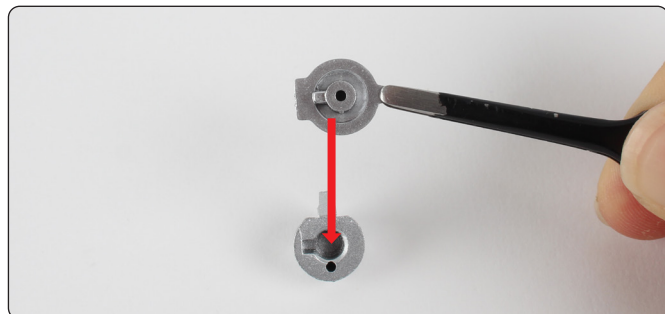
## Stage 008: Assembling the Cylinder Head



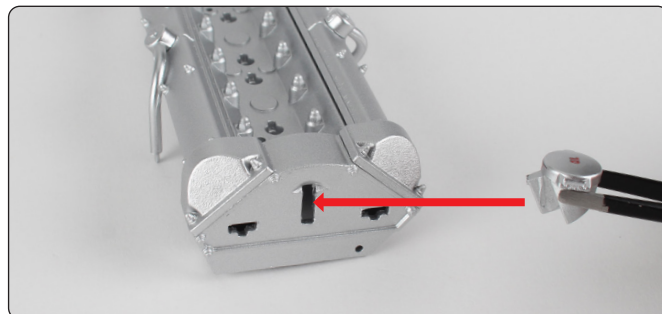
Align the left and right cam covers as shown.



Firmly press the covers onto the shaft pins. You may need to remove excess paint from the pins to get a flush fit.

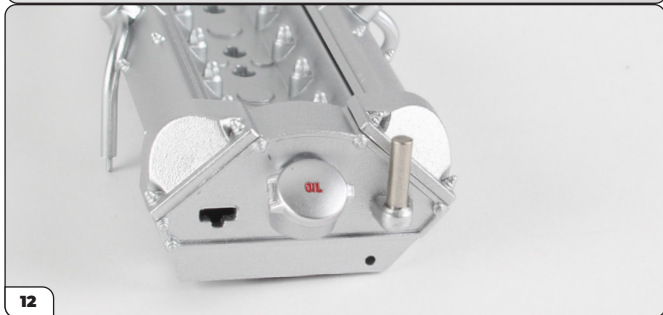
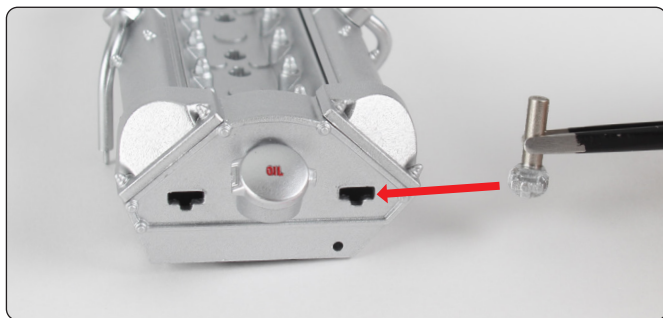


Use the shaped fitting to fit the oil filler cap (8-H) onto the neck (8-G).



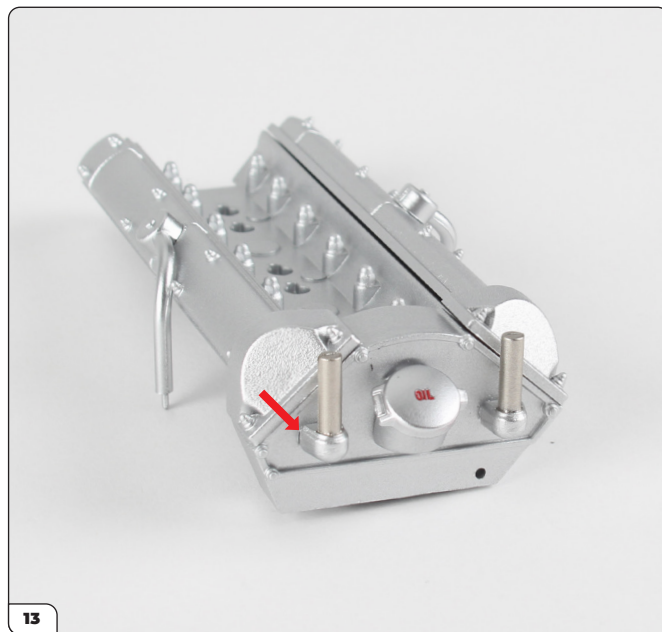
Press the neck into the cylinder head.

## Stage 008: Assembling the Cylinder Head



12

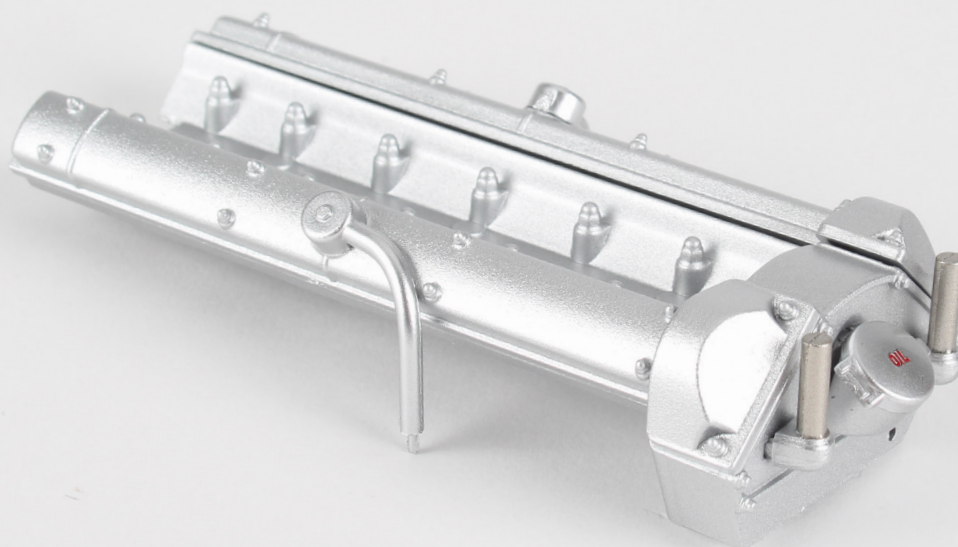
Take one of the cylinder head parts and press the shaped fitting into the cylinder head.



13

Fit the remaining cylinder head part in the same way.

STAGE COMPLETE





# Stage 009: Installing the Spark Plugs

In this stage you'll fit the distributor to the cylinder head then install the spark plugs and electrical cables.

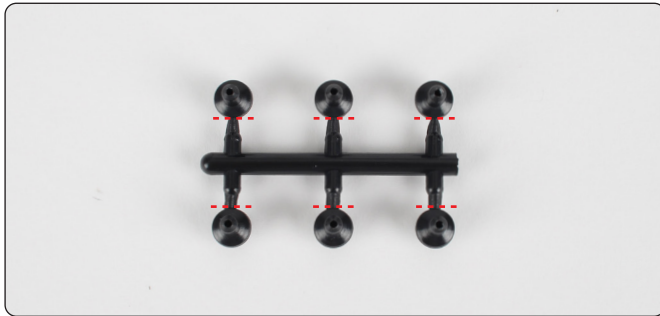


## STAGE 009 PARTS LIST

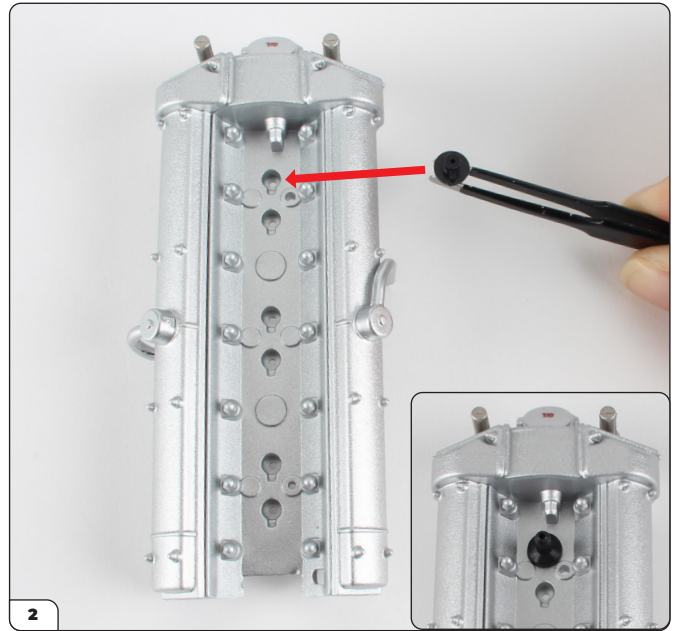
Name
9-A Distributor
9-B Cable tube
9-C Spark plug x6
9-D Electrical cable (long)
9-E Electrical cable (short) x5
PS21 screw x7



## Stage 009: Installing the Spark Plugs



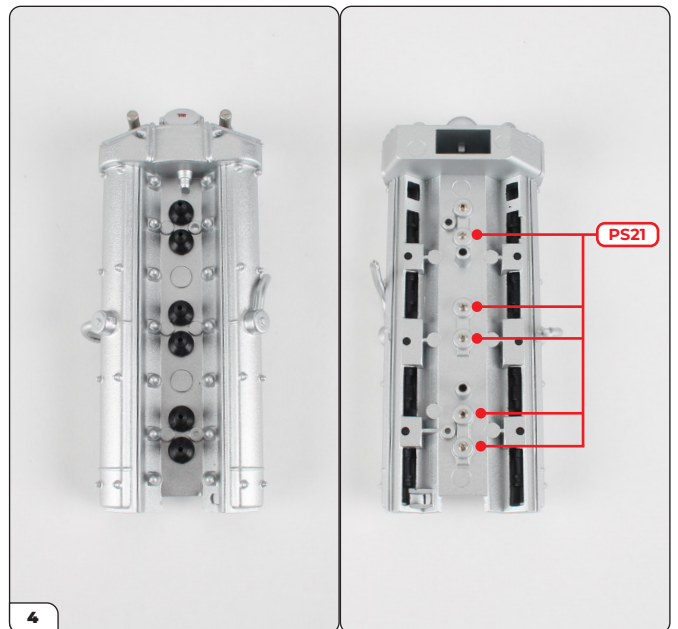
1 Remove the six spark plugs by cutting them at the points indicated.



2 Fit one of the spark plugs into the cylinder head hole (from stage 008).



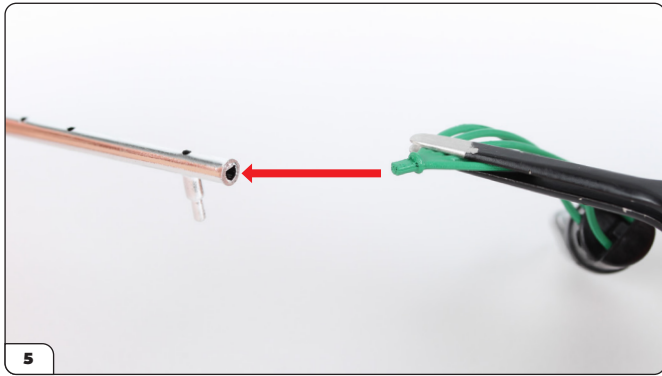
3 Turn the assembly over and secure the spark plug using a PS21 screw.



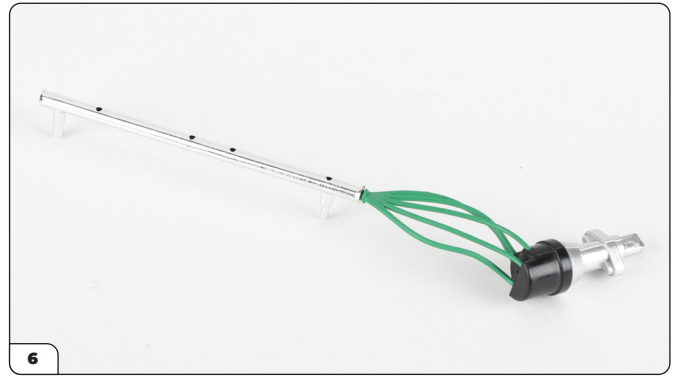
4 Fit the other five spark plugs into the remaining holes then secure using 5x PS21 screws.



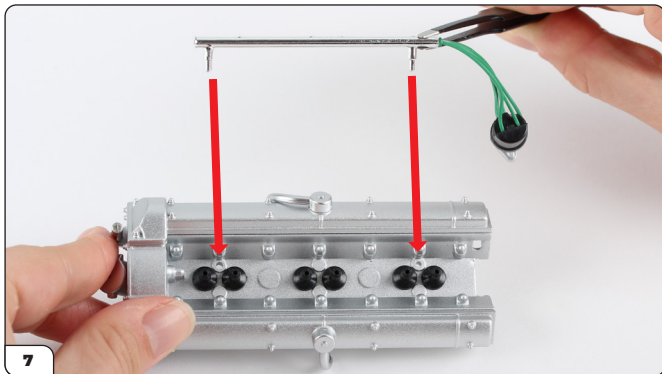
## Stage 009: Installing the Spark Plugs



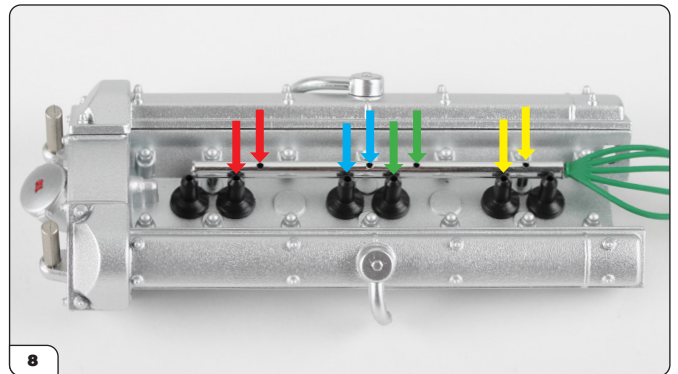
Fit the distributor into the cable tube, pushing its shaped pin into the hole.



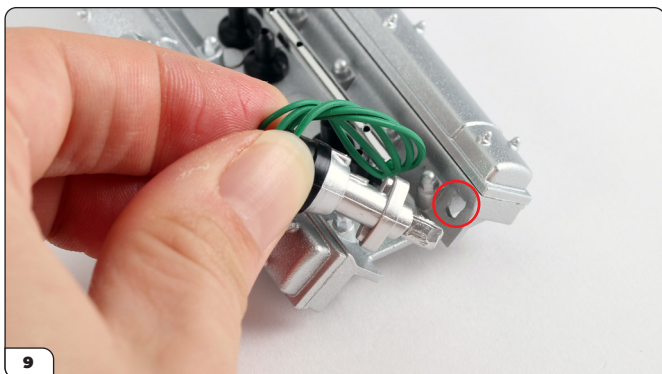
Press the cable firmly in place. Do not glue the cables at this stage.



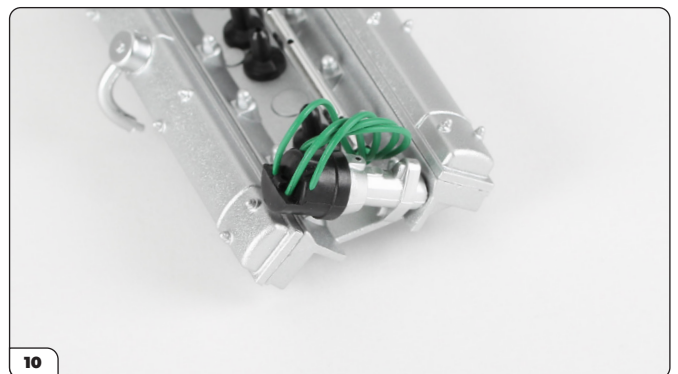
Fit the cable tube into the cylinder head, pushing the pins into the holes.



Check the holes in the tube align with the corresponding spark plugs as indicated by pairs of coloured arrows.

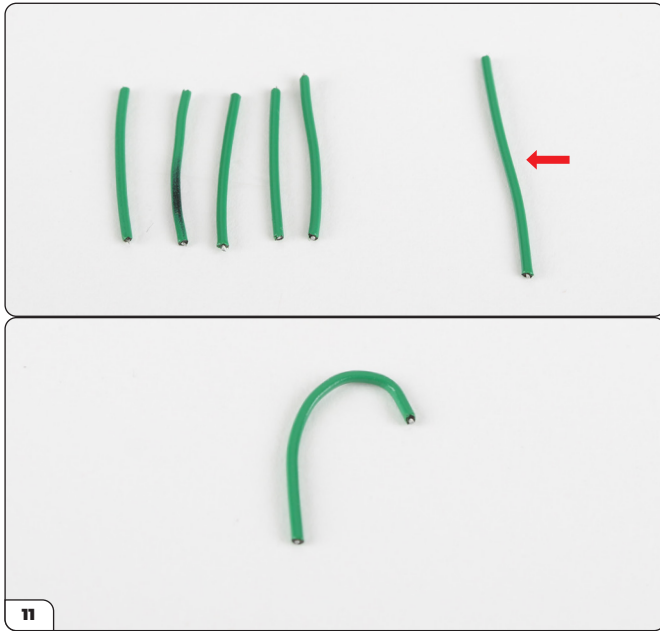


Fit the distributor into the shaped opening in the cylinder head.

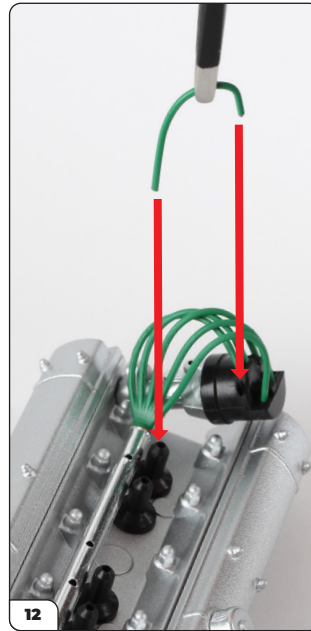


You may need to remove excess paint to get a flush fit.

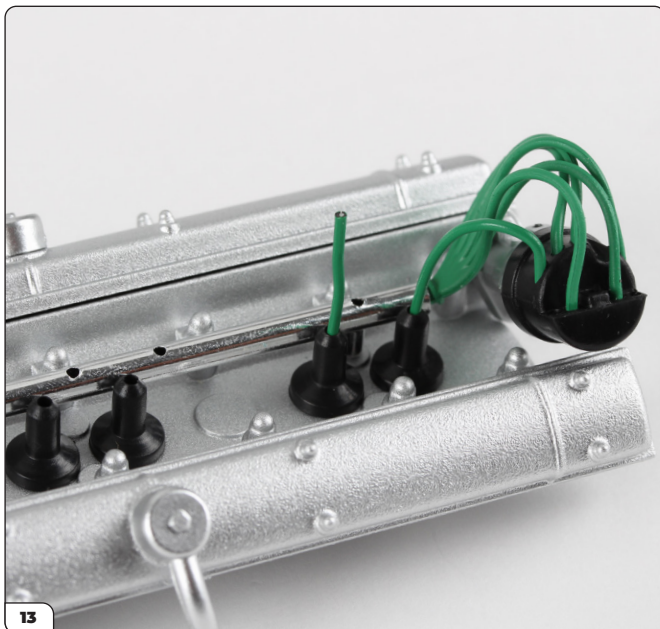
## Stage 009: Installing the Spark Plugs



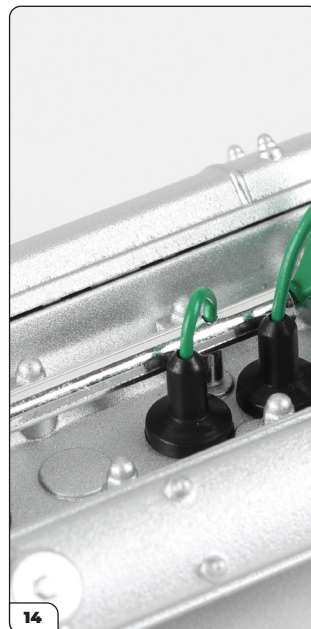
Separate the longer electrical cable (9-D) from the five shorter cables and bend it into a 'U' shape.



Fit the long cable into the distributor and the spark plug closest to it. Adjust the bend in the cable as needed. Do not glue the cables.



Fit one of the short cables (9-E) into the next spark plug along.

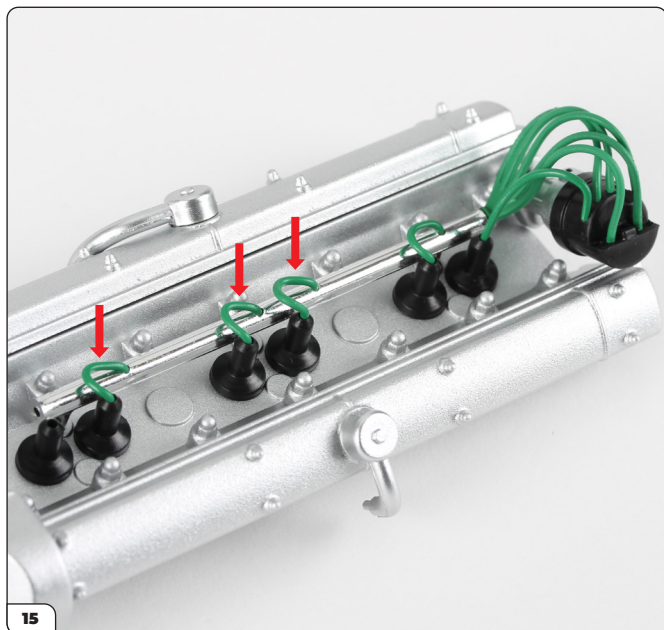


Bend the cable to fit the other end into the hole in the cable tube then press to flatten it.

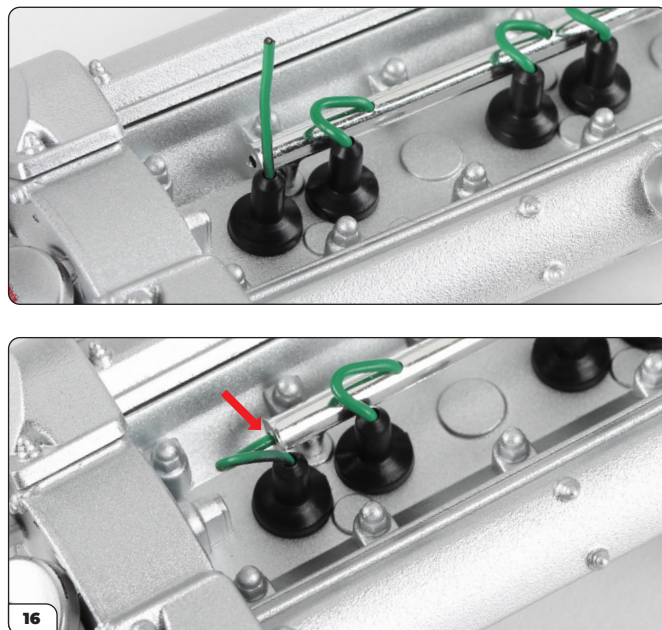




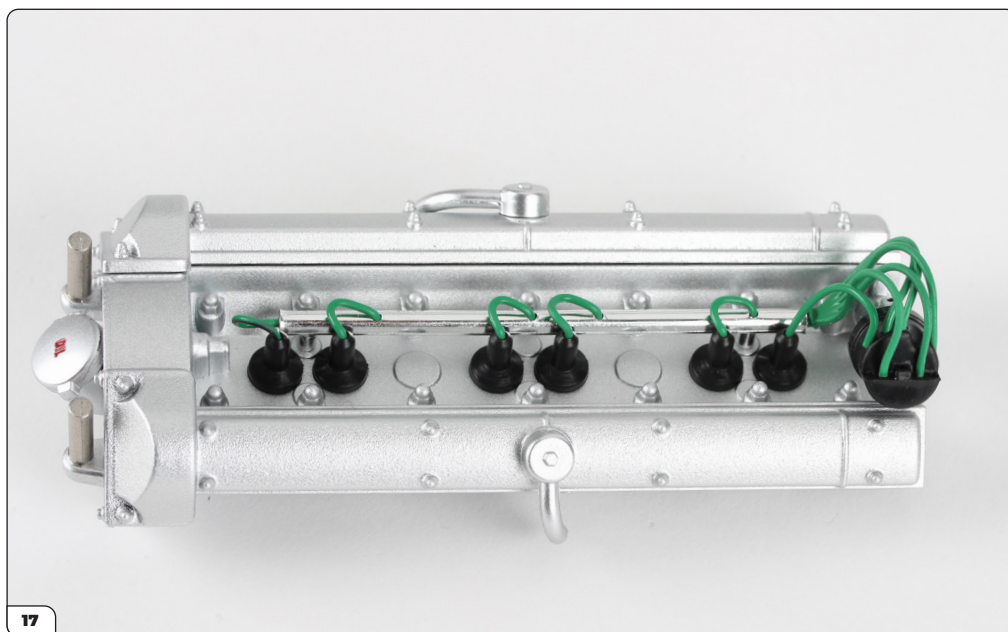
## Stage 009: Installing the Spark Plugs



Fit three more short cables into the next spark plugs in sequence in the same way.



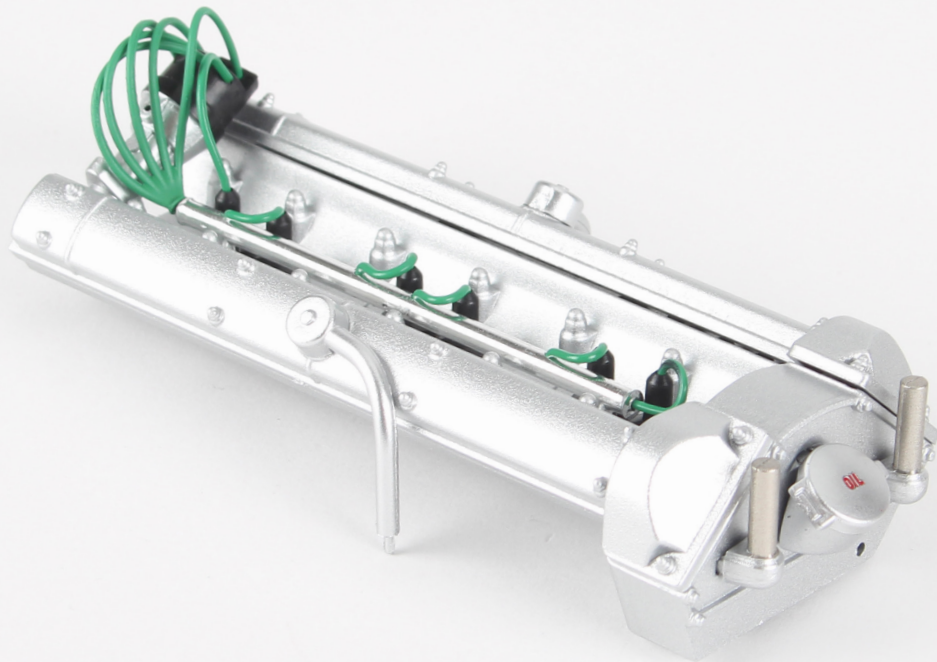
Fit the last short cable into the remaining spark plug and fit into the hole at the end of the cable tube.



## Stage 009: Installing the Spark Plugs

---

STAGE COMPLETE



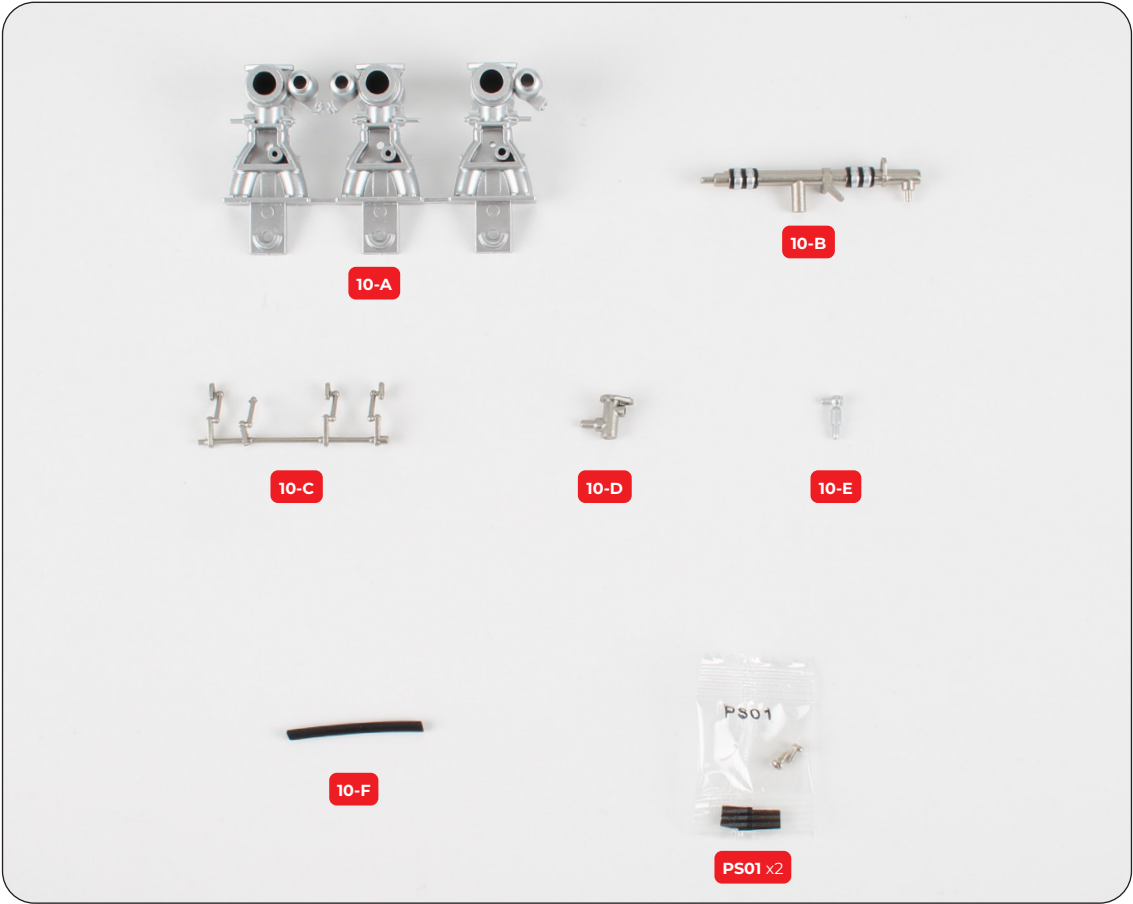
# Stage 010: Building the Carburettors

Next you'll build the carburettors by attaching the main fuel line and throttle linkage.



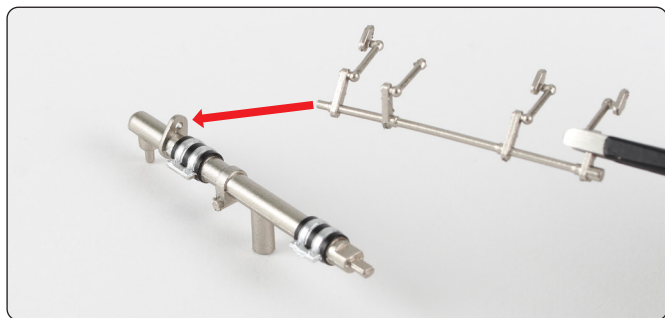
## STAGE 010 PARTS LIST

Name
10-A Carburettors
10-B Main fuel line
10-C Throttle linkage
10-D Fuel line end
10-E Fuel line connector
10-F Fuel pipe
PS01 screw x2





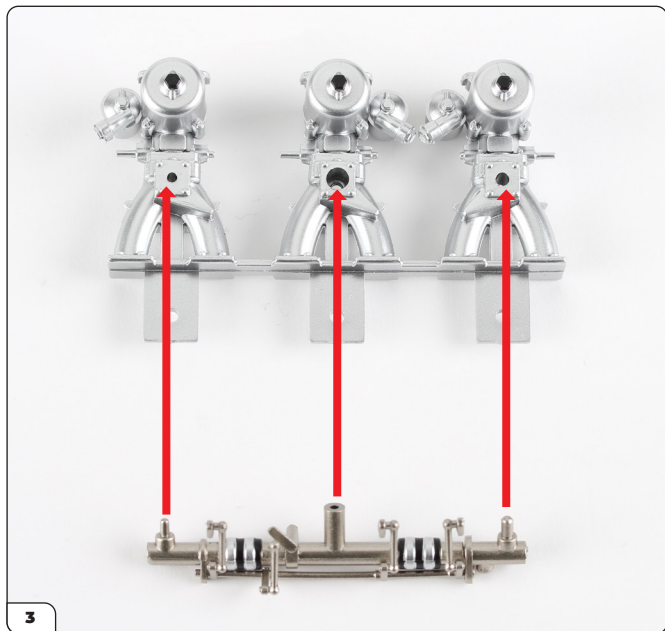
## Stage 010: Building the Carburettors



Fit the throttle linkage (10-C) to the main fuel line (10-B), pushing the thinner pin into the hole. Ensure the linkage is oriented as shown once fitted.



Fit the fuel line end (10-D), pressing it onto the shaped pins. Be careful not to damage the choke lever.

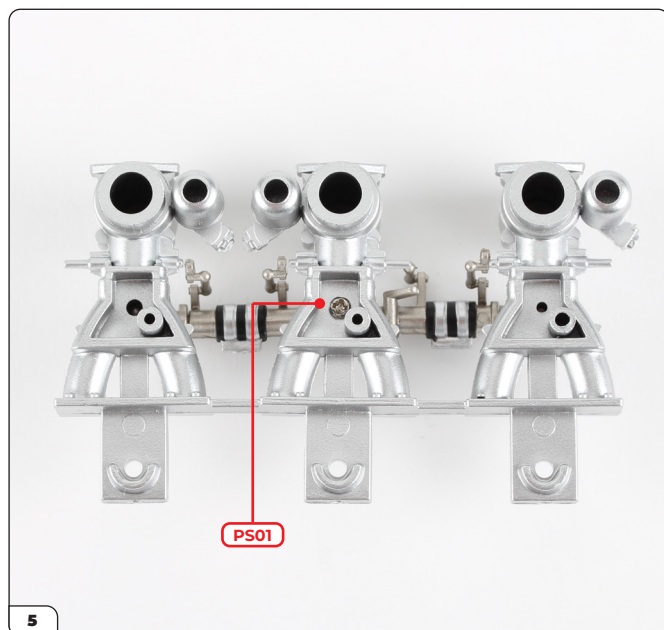


Take the carburettors and align them with the main fuel line.

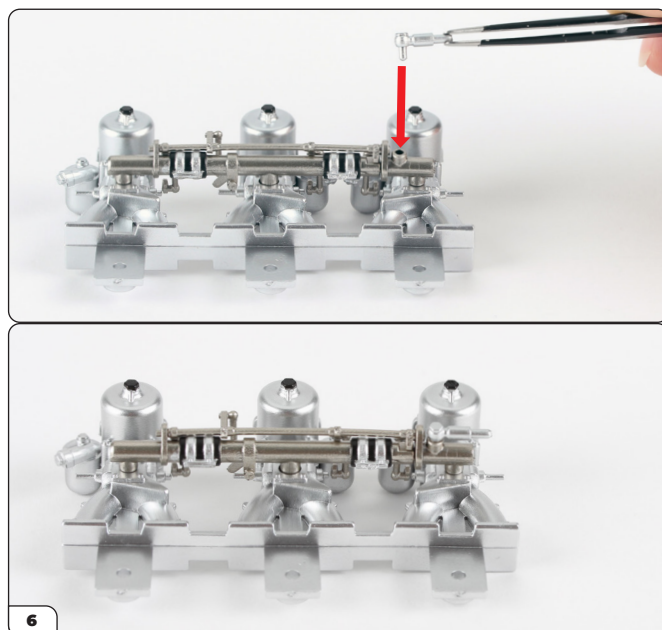


Fit the fuel line in place.

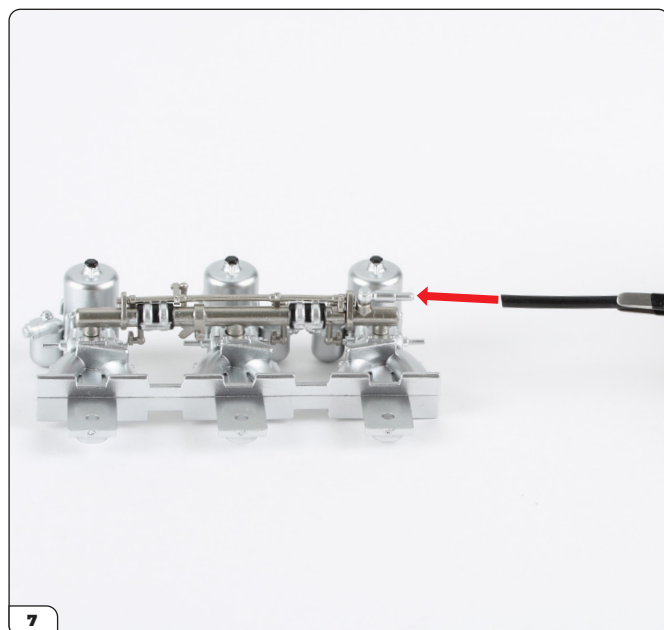
## Stage 010: Building the Carburettors



Turn the assembly over and secure with a PS01 screw.



Fit the fuel line connector (10-E) into the small hole in the fuel line end.

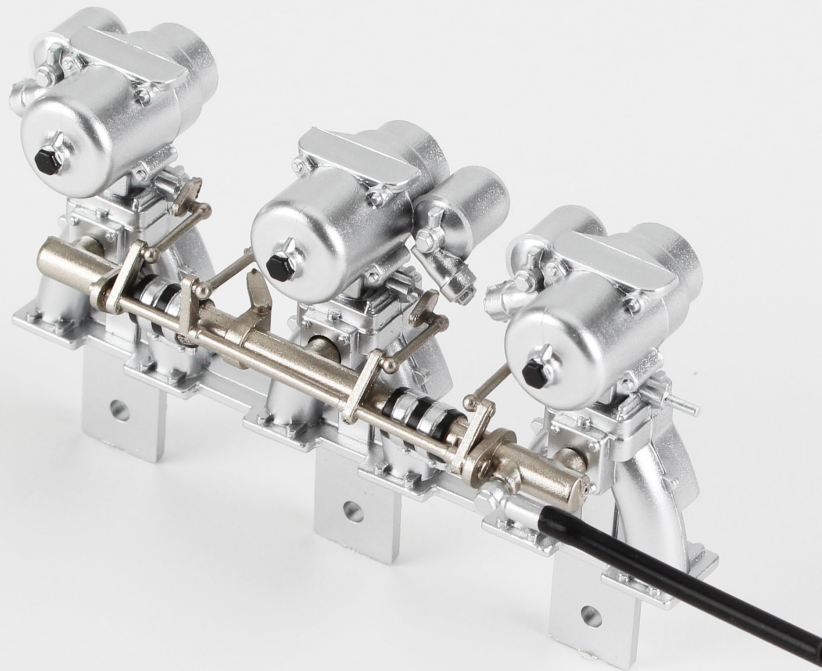


Fit the fuel pipe onto the connector.



## Stage 010: Building the Carburettors

STAGE COMPLETE



# Stage 011: Fitting the Carburettors

For this stage you'll fit the carburettors onto the lower part of the cylinder head.



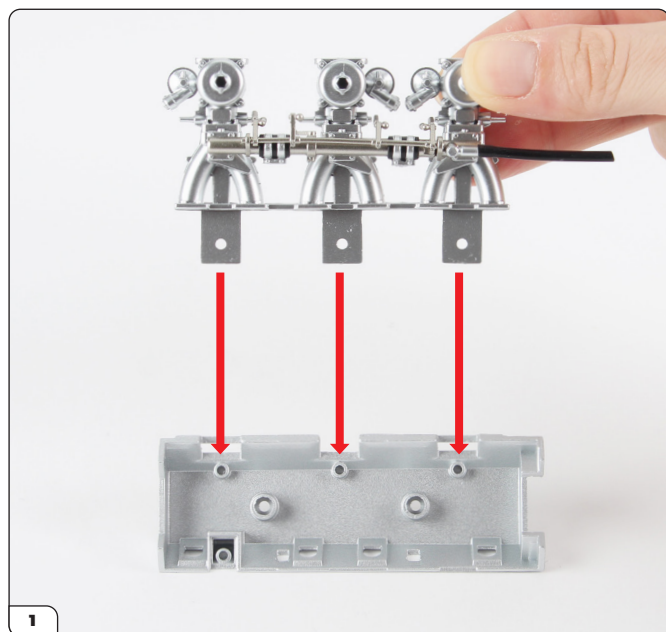
## STAGE 011 PARTS LIST

Name
11-A Cylinder head (lower part)
DS01 screw x4

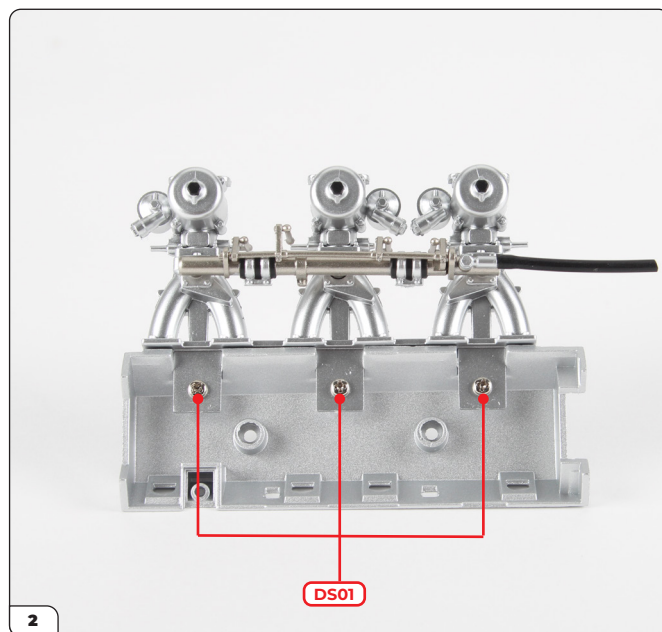




## Stage 011: Fitting the Carburettors

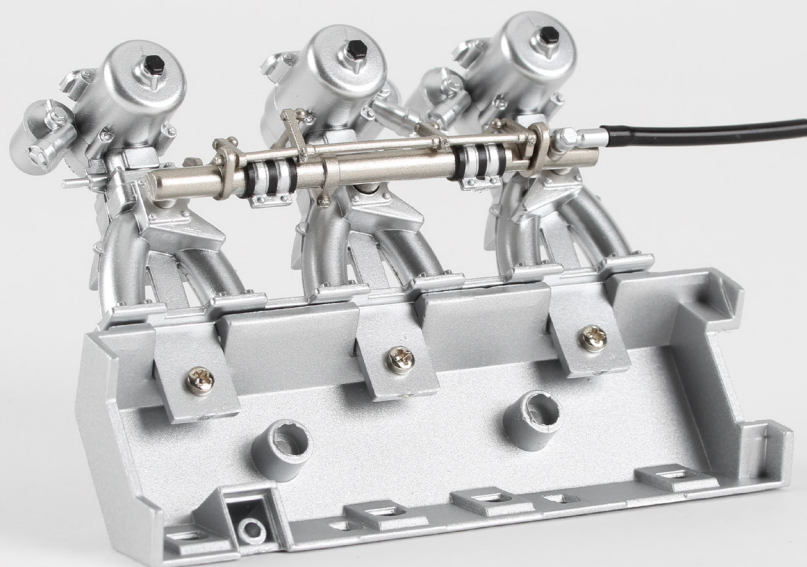


Fit the carburetors (from stage 010) onto the cylinder head lower part.



Secure using 3x DS01 screws.

STAGE COMPLETE





## Stage 012: Attaching the Exhaust Manifolds and Assembling the Cylinder Head

In this stage you'll attach the front and rear exhaust manifolds onto the lower part of the cylinder head, then fix the two parts of the cylinder head together.



### STAGE 012 PARTS LIST

Name
12-A Rear exhaust manifold
12-B Front exhaust manifold
12-C Cooling water thermostat
DS01 screw x4
PS28 screw x5



12-A



12-B



12-C

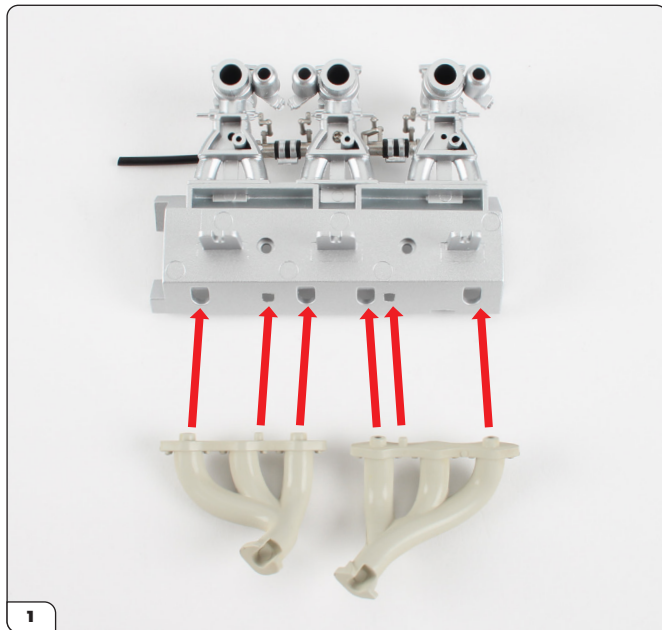


DS01 x4



PS28 x5

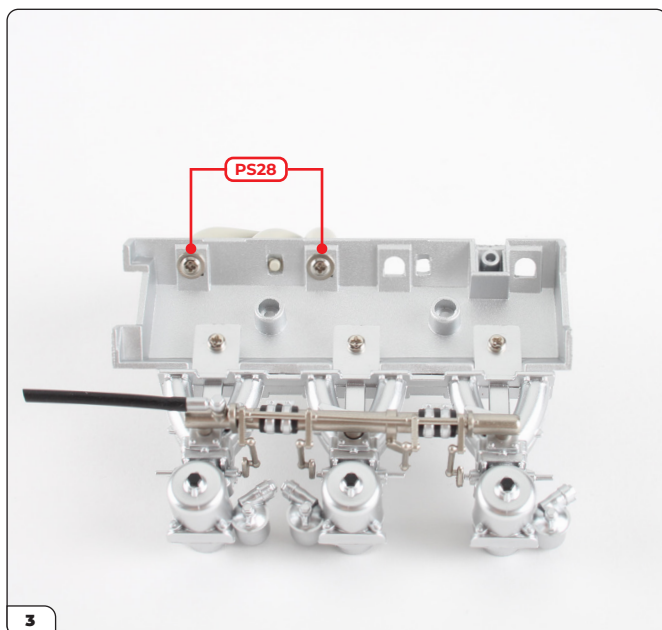
## Stage 012: Attaching the Exhaust Manifolds and Assembling the Cylinder Head



The front (12-B) and rear (12-A) exhaust manifolds will now be fitted to the cylinder head using the fixing points shown.



Start by fitting the front manifold in place.

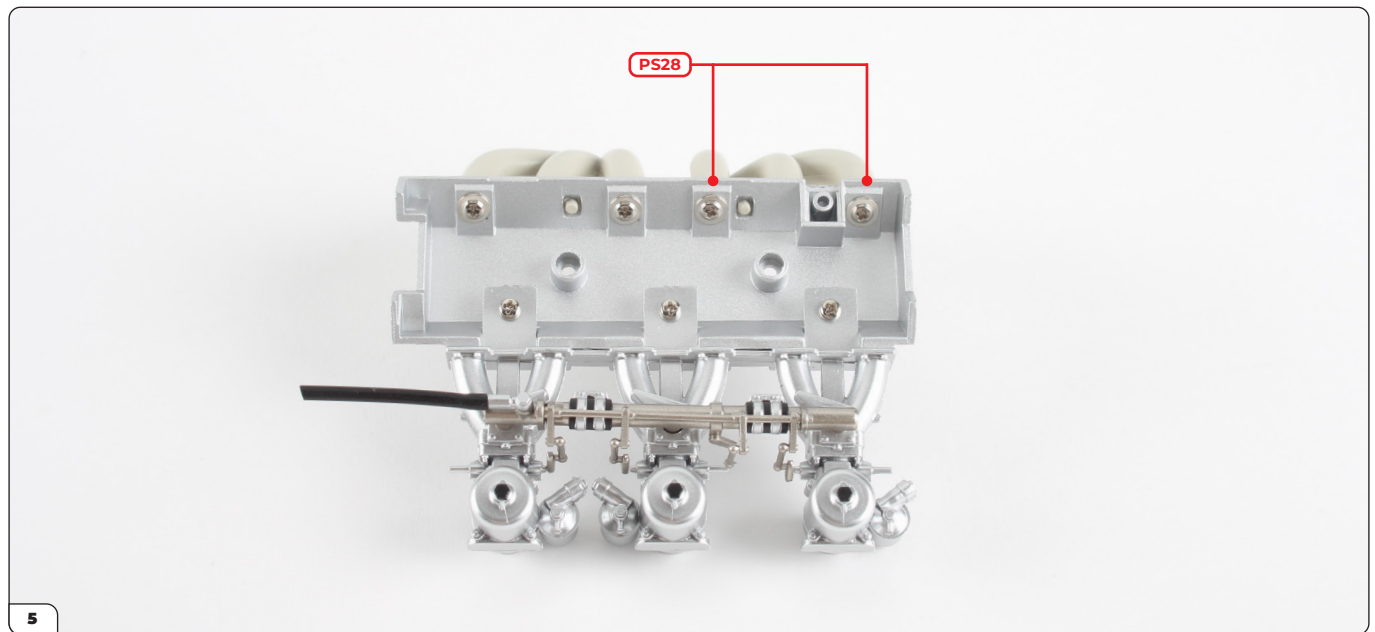


Secure from the opposite side using 2x PS28 screws.

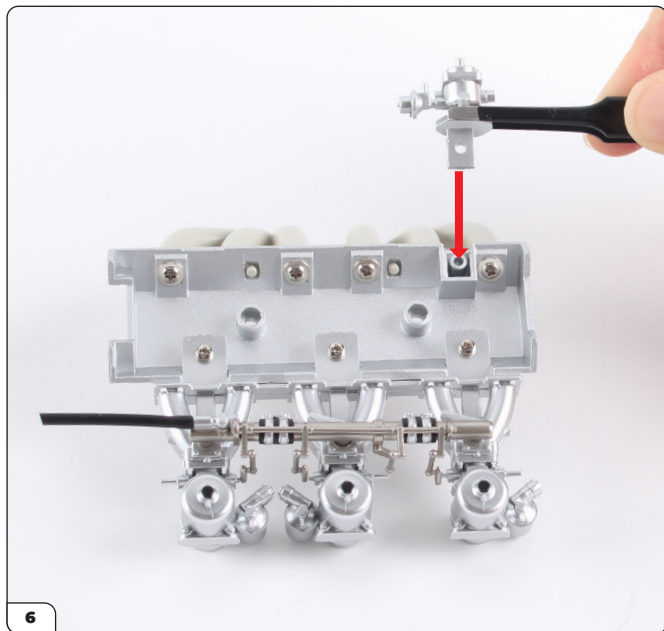


Then fit the rear manifold in place.

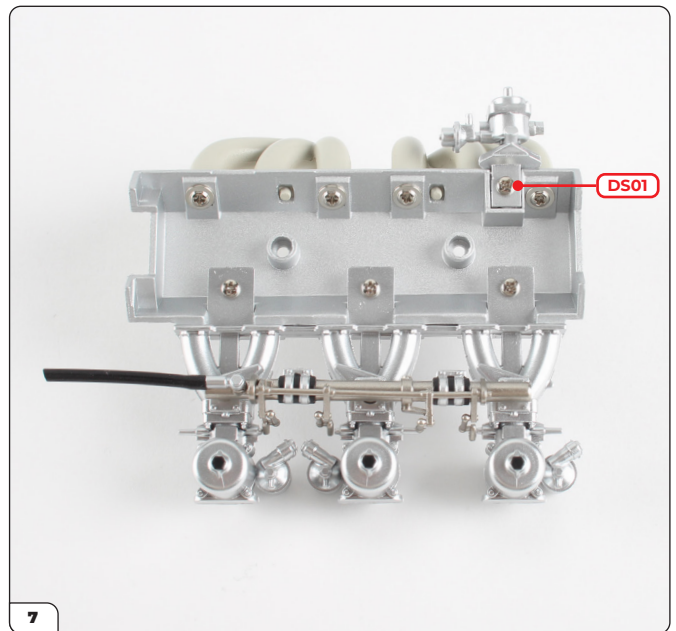
## Stage 012: Attaching the Exhaust Manifolds and Assembling the Cylinder Head



Secure using another 2x PS28 screws.

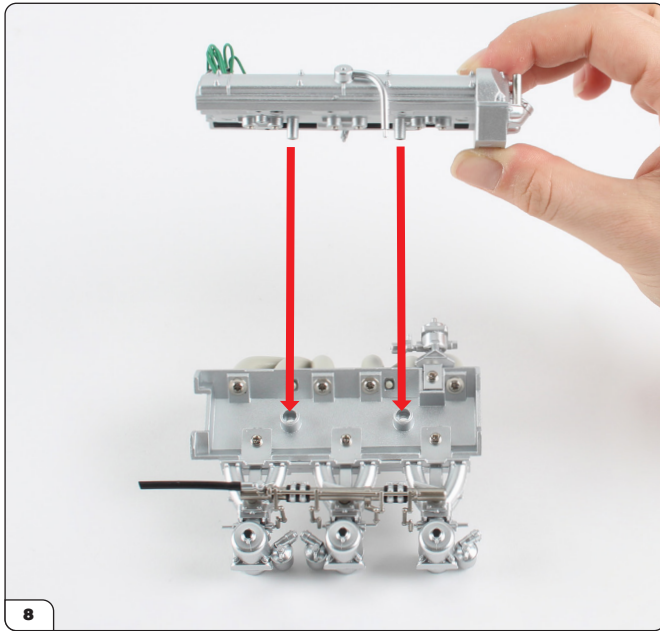


Fit the cooling water thermostat (12-C) into the square recess.



Fix using a DS01 screw.

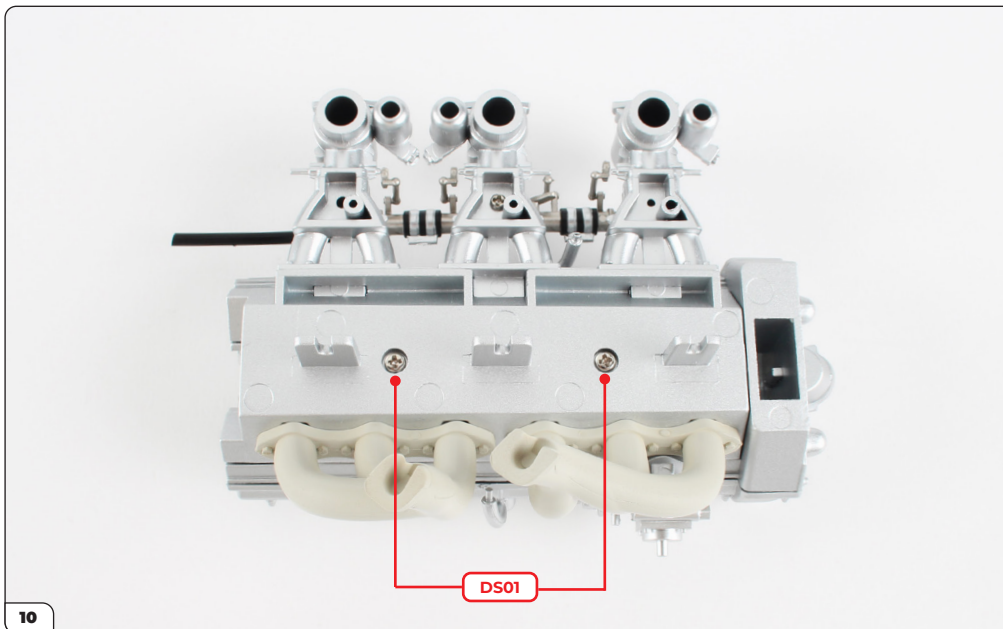
## Stage 012: Attaching the Exhaust Manifolds and Assembling the Cylinder Head



Align the cylinder head upper part (stage 009) with the lower part.



Fit the upper part in place.



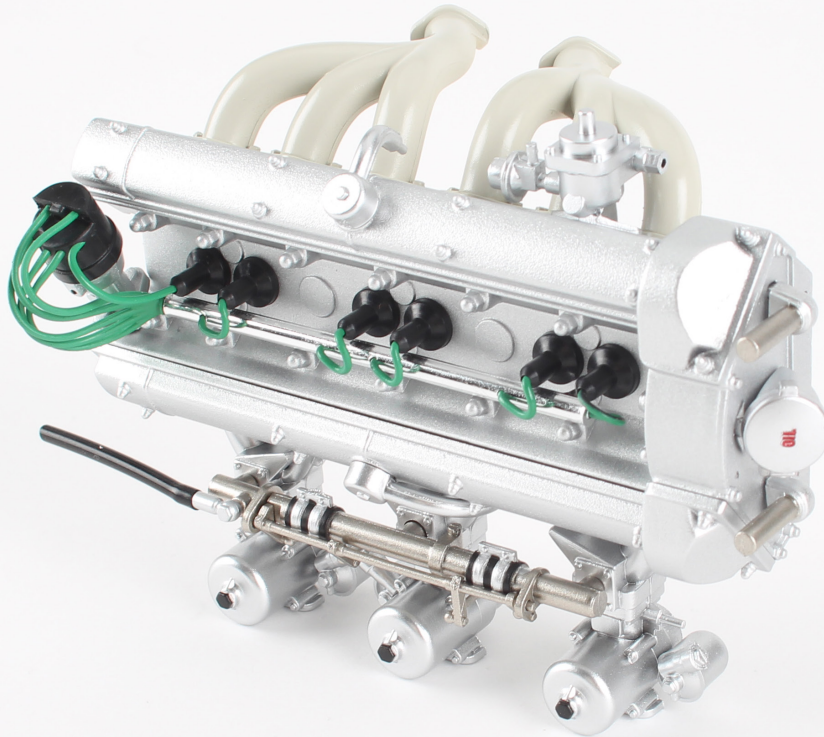
Secure from the reverse side using 2x DS01 screws.



## Stage 012: Attaching the Exhaust Manifolds and Assembling the Cylinder Head

---

STAGE COMPLETE





# Stage 013: Building the Alternator and Engine Distribution Cover

In this stage you'll build the alternator and fit the pulleys onto the engine distribution cover ready to install them in the next stage.



## STAGE 013 PARTS LIST

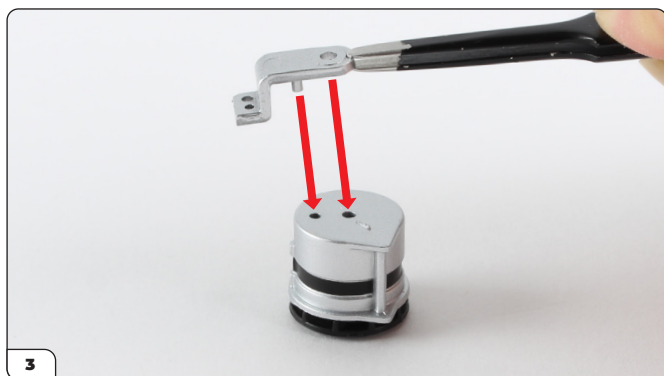
Name	Name
13-A Engine distribution cover	13-G Pulley A (part 2)
13-B Belt	13-H Pulley B
13-C Alternator	13-I Pulley A (part 1)
13-D Distribution cover holder	13-J Alternator pulley (part 2)
13-E Alternator bracket	DS01 screw x3
13-F Alternator pulley (part 1)	PS02 screw x4



## Stage 013: Building the Alternator and Engine Distribution Cover



Fit the alternator pulley (13-F) to the alternator, aligning the shaped pin with the notch as shown.



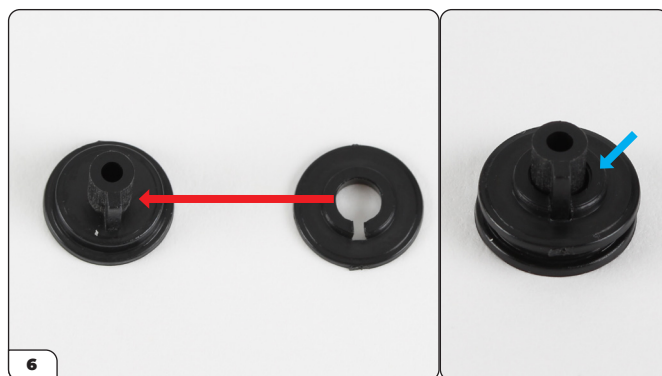
Turn the assembly over and fit the bracket.



Secure with a PS02 screw.

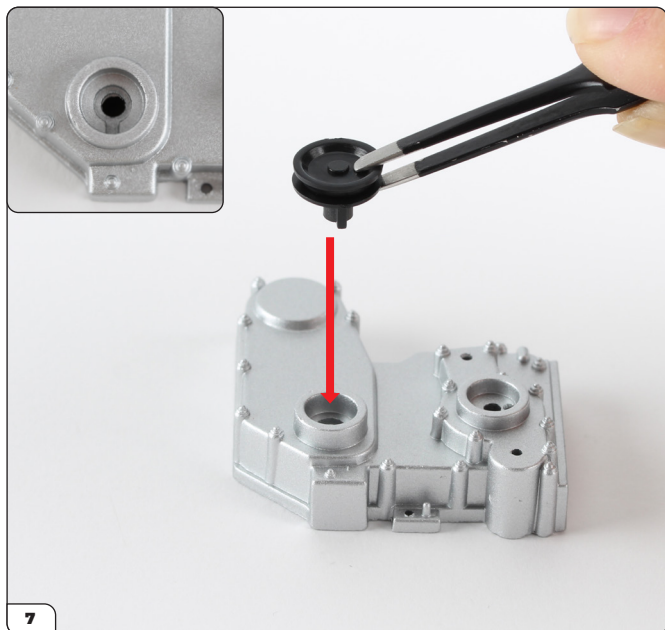


Turn the assembly back over and fit the alternator pulley (part 2).

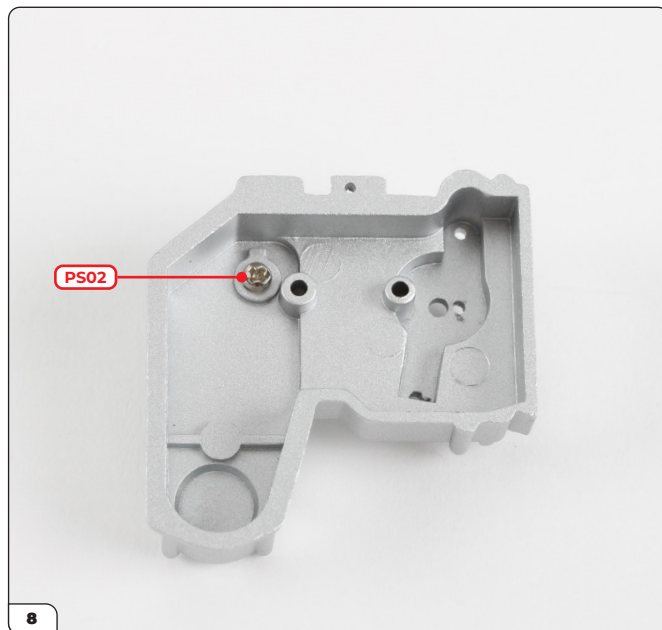


Press the two parts of the pulley A (13-G and 13-I) together using the shaped fitting. Note that the inner ridge of part 1 is on top (blue arrow).

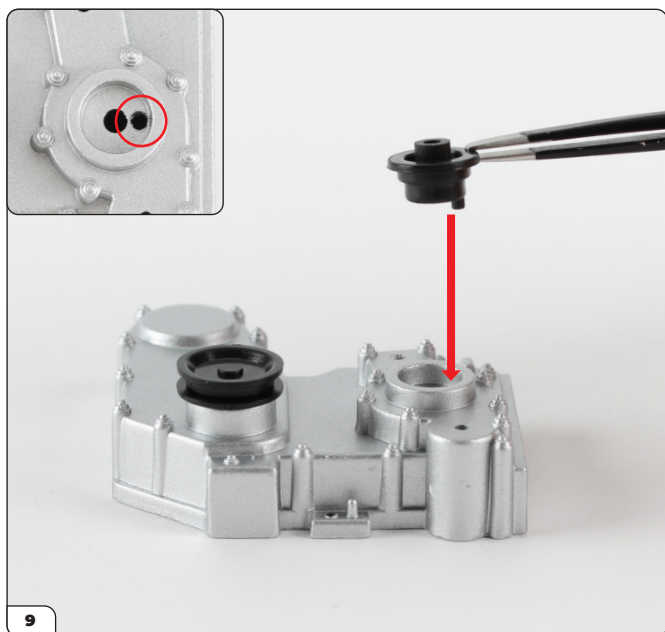
## Stage 013: Building the Alternator and Engine Distribution Cover



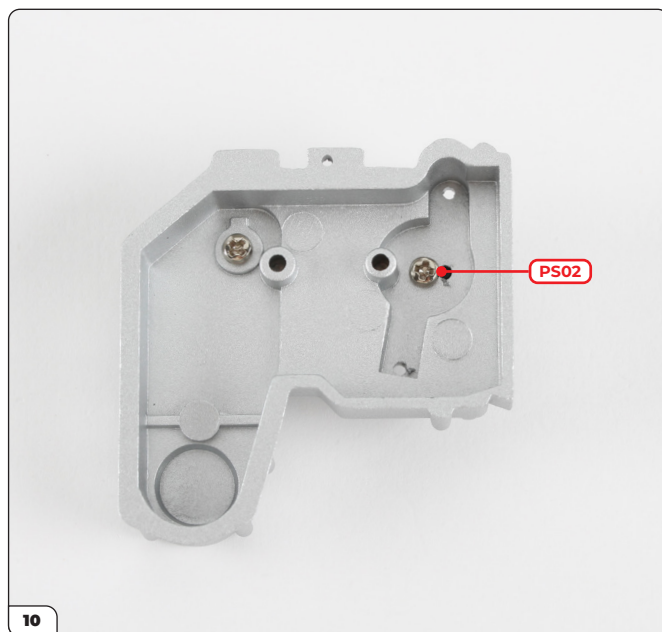
Fit the pulley A into the shaped recess (inset) in the engine distribution cover.



Secure from the reverse side using a PS02 screw.

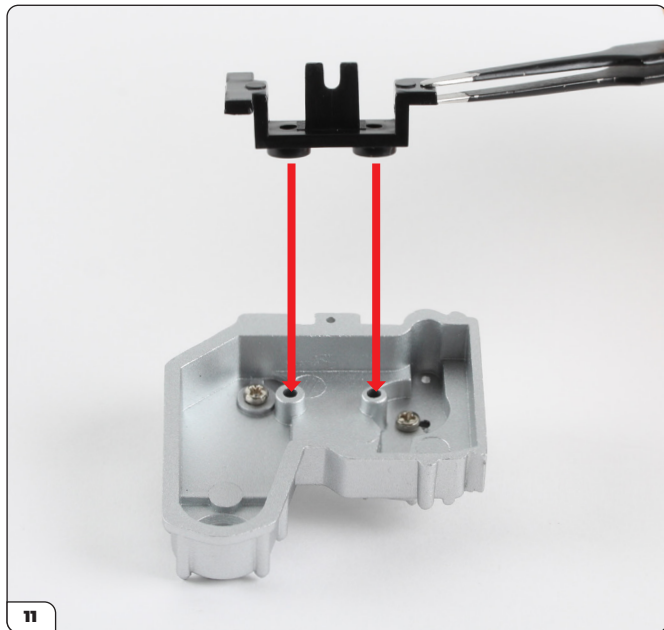


Fit pulley B (13-H) into the recessed hole, aligning its pin with the small hole (inset, circled).

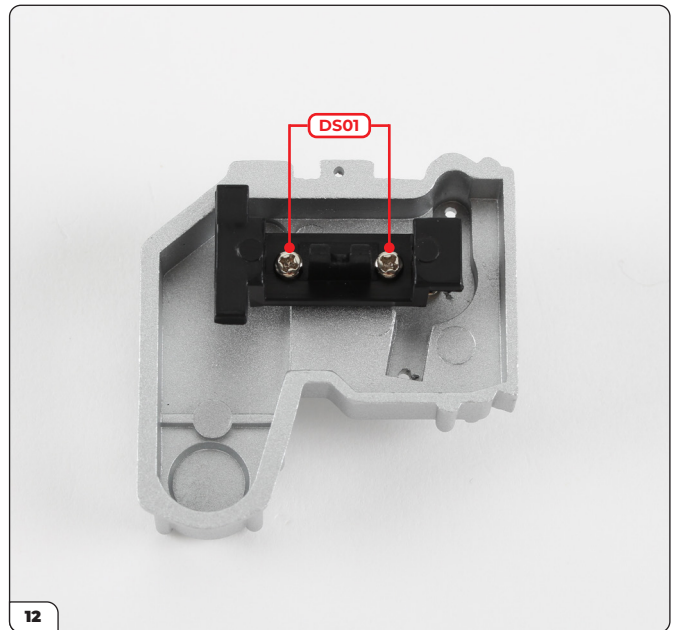


Secure from the reverse side using a PS02 screw.

## Stage 013: Building the Alternator and Engine Distribution Cover

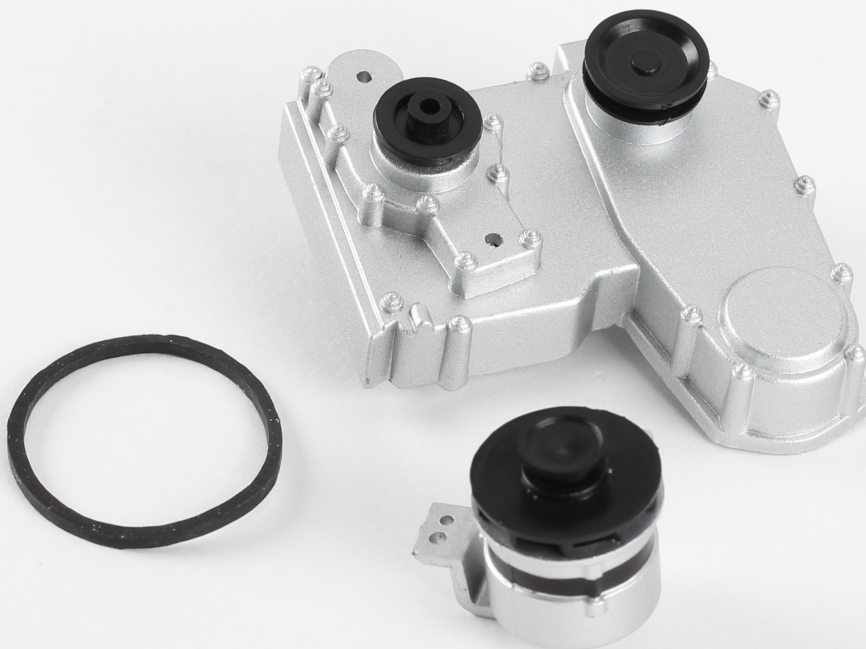


Fit the holder onto the distribution cover.



Secure using 2x DS01 screws.

STAGE COMPLETE





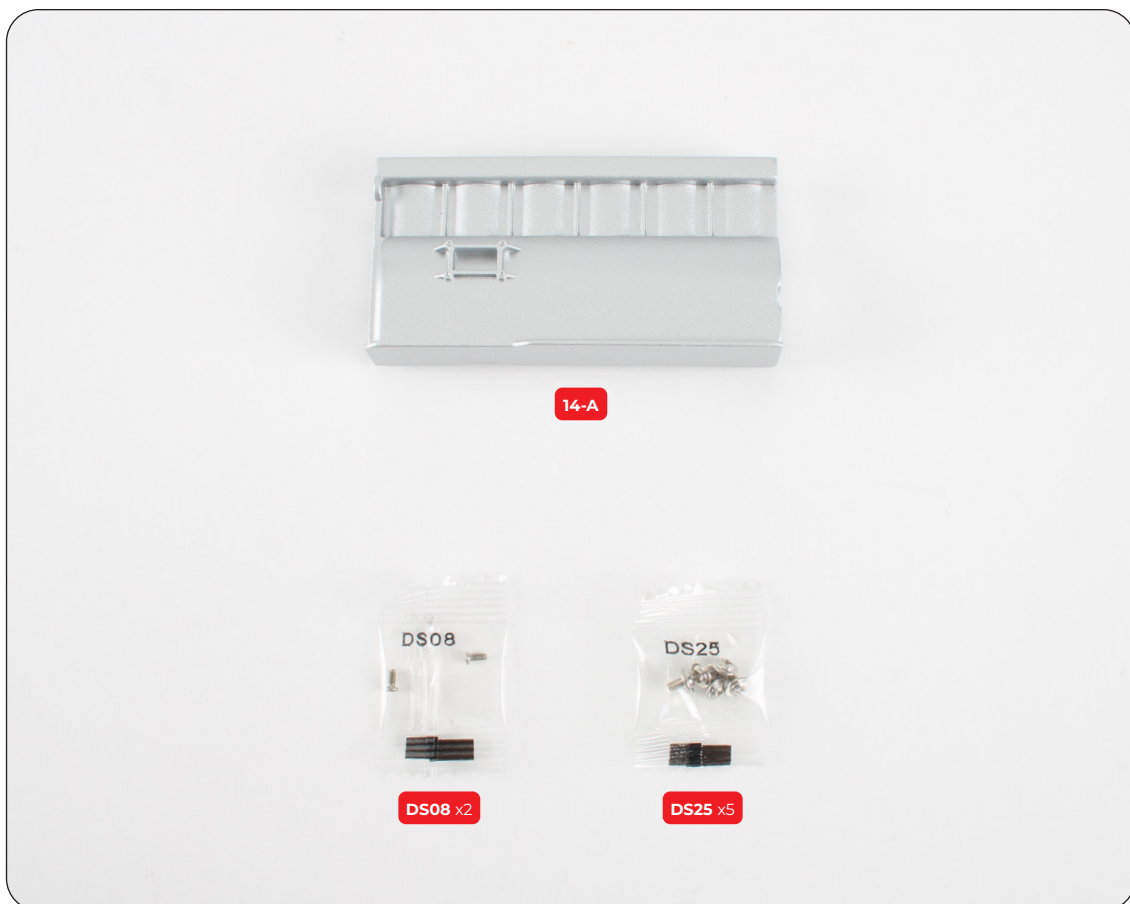
## Stage 014: Fitting the Left Side of the Cylinder Head and Engine Distribution Cover

You'll now fit the left side of the cylinder head along with the parts assembled in stage 013.

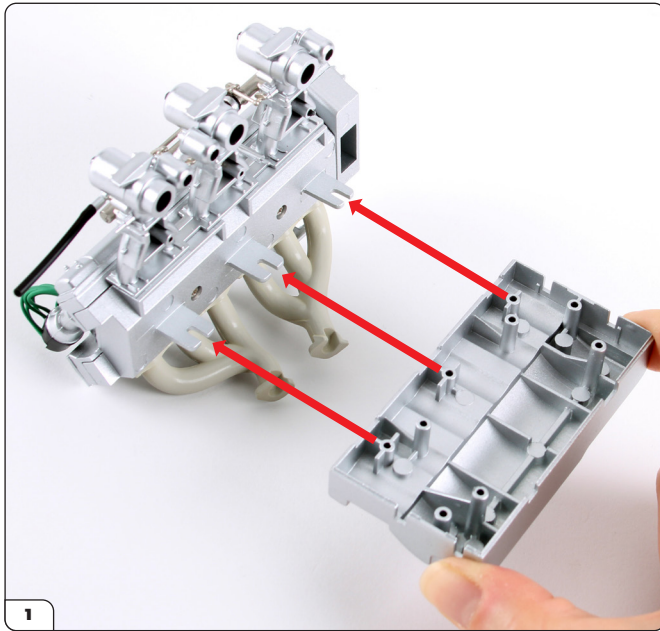


### STAGE 014 PARTS LIST

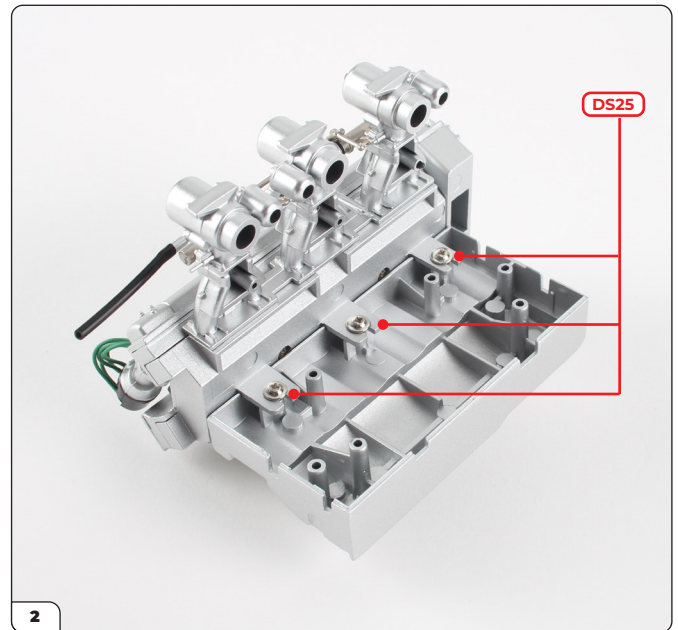
Name
14-A Cylinder head (left side)
DS08 screw x2
DS25 screw x5



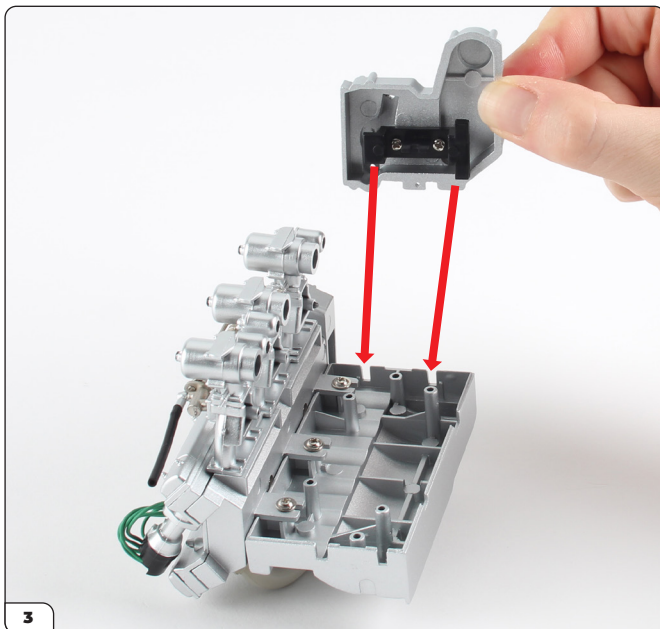
## Stage 014: Fitting the Left Side of the Cylinder Head and Engine Distribution Cover



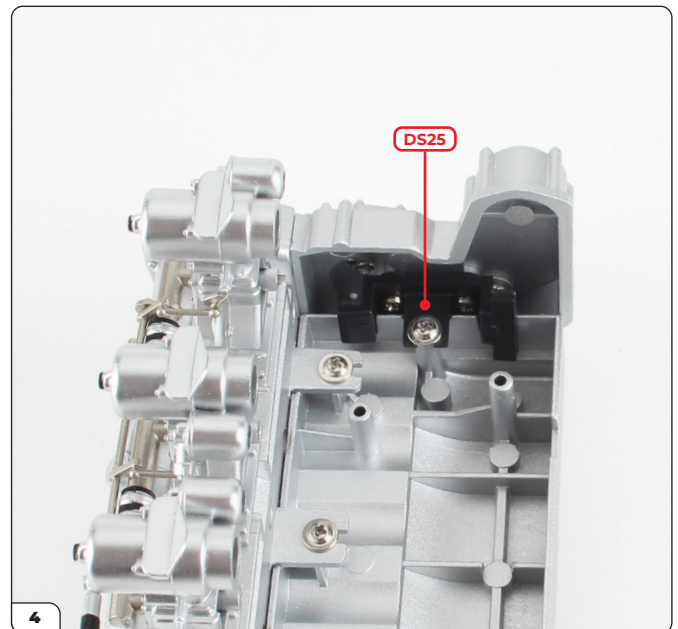
Take the cylinder head assembly from stage 012 and align it with the cylinder head (left side) as shown. The three screw posts fit under the tabs.



Secure using 3x DS25 screws.

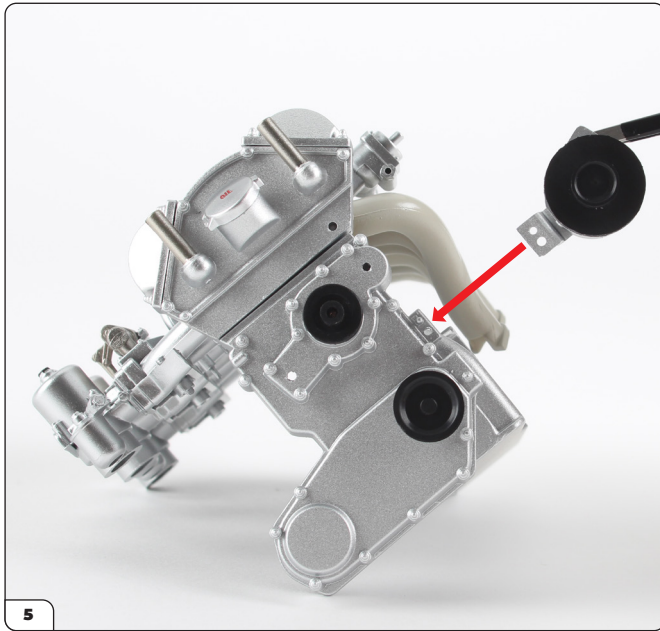


Fit the distribution cover holder (stage 013) into the two slots on the cylinder head.



Secure using a DS25 screw.

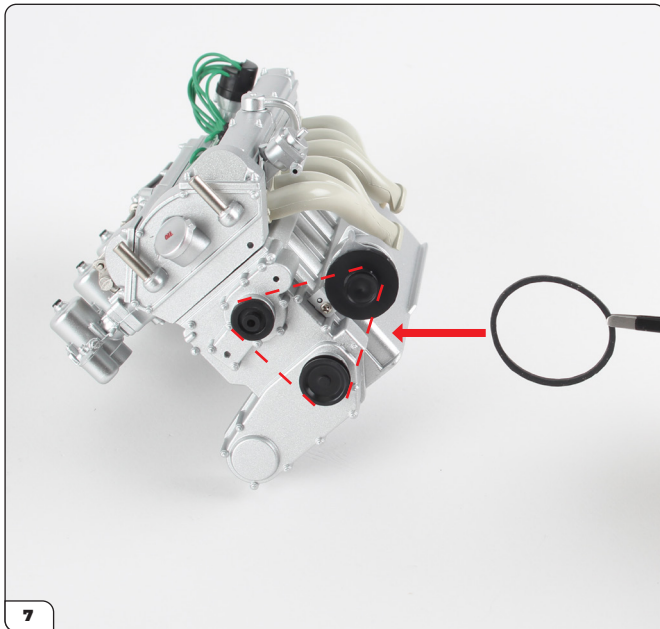
## Stage 014: Fitting the Left Side of the Cylinder Head and Engine Distribution Cover



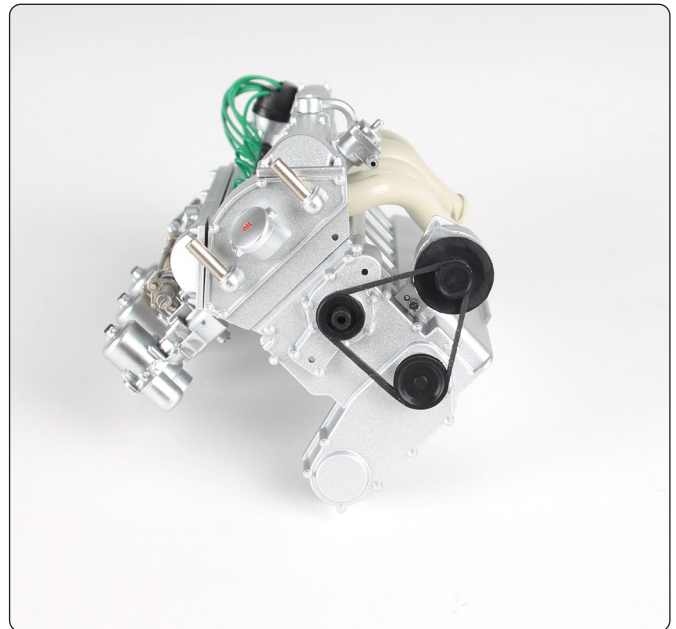
Fit the alternator bracket (stage 013) onto the cover.



Secure using a DS08 screw.



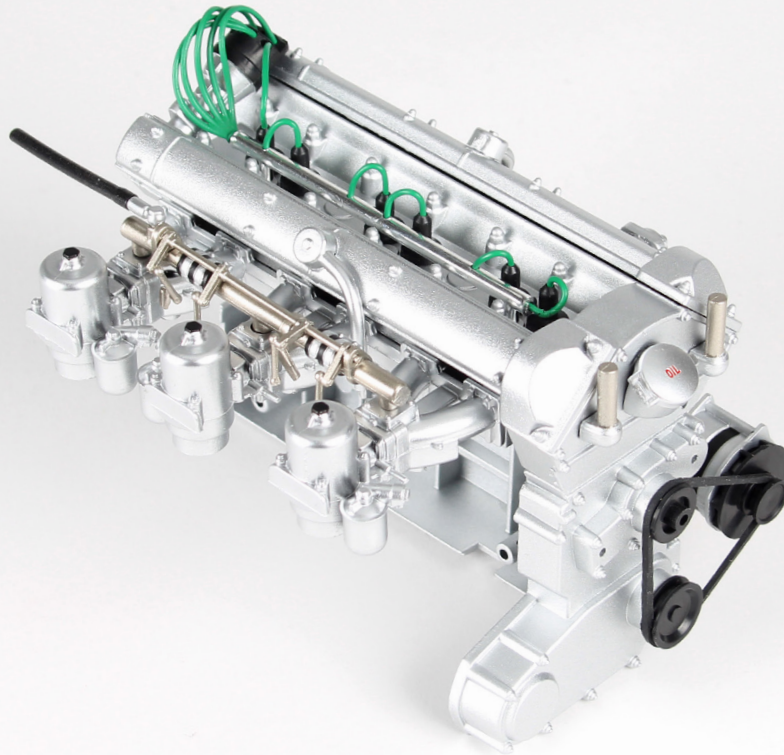
Wrap the belt (stage 013) around the three pulleys.





## Stage 014: Fitting the Left Side of the Cylinder Head and Engine Distribution Cover

STAGE COMPLETE





## Stage 015: Building and Attaching the Gearbox

For the last stage of this pack you'll build the gearbox then attach it onto the cylinder head assembly.

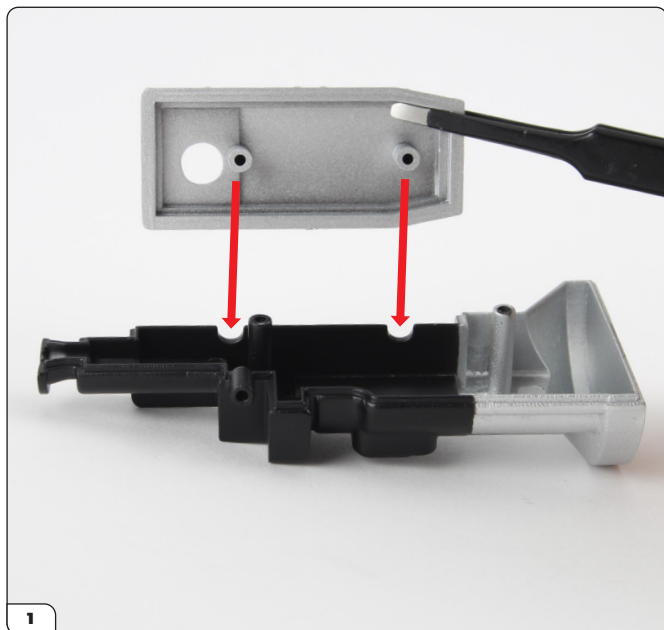


### STAGE 015 PARTS LIST

Name
15-A Gearbox (right side)
15-B Gearbox (left side)
15-C Gearbox (front)
15-D Gearbox (top)
DS01 screw x5
DS25 screw x2
PS28 screw x3



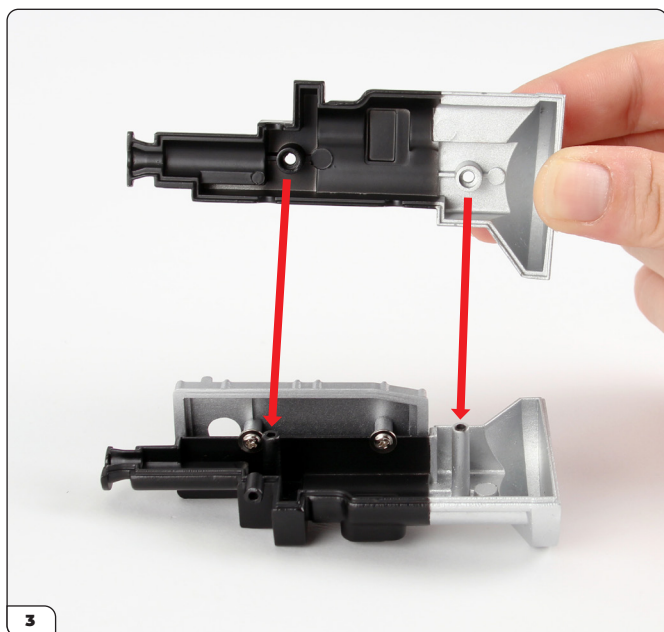
## Stage 015: Building and Attaching the Gearbox



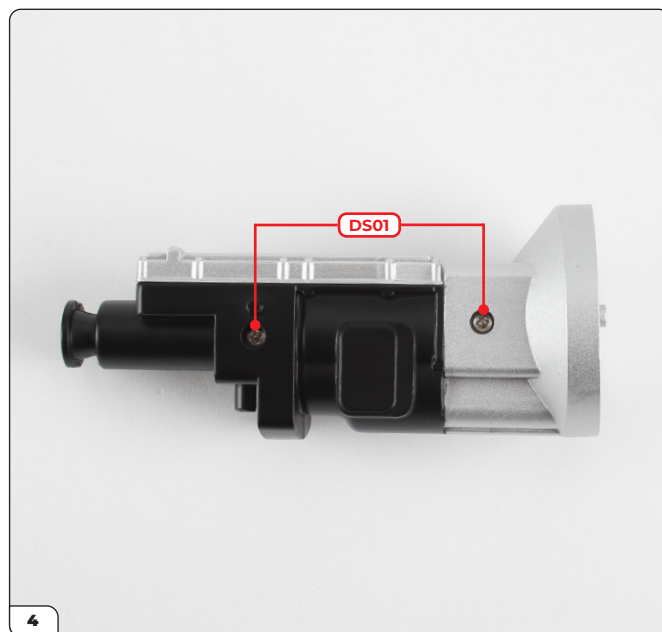
Take the gearbox right side and the gearbox top, aligning them as shown, then fit into place.



Secure using 2x PS28 screws.

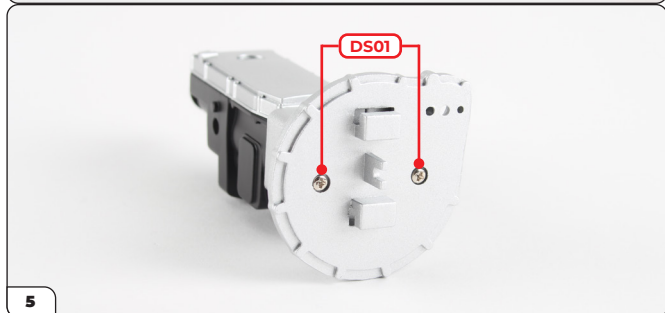
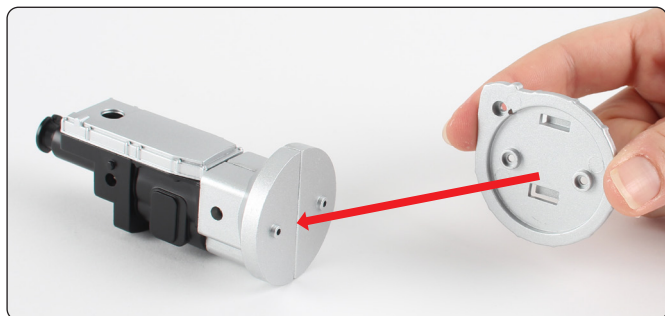


Fit the gearbox left side onto the right side.

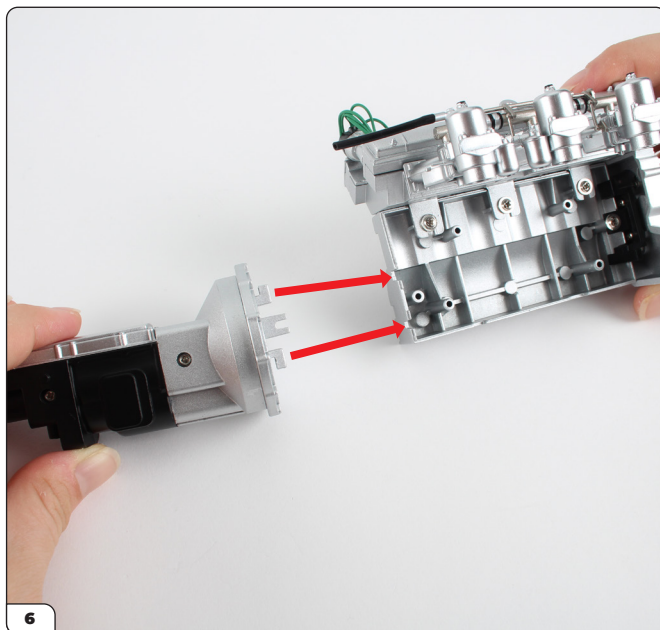


Secure using 2x DS01 screws

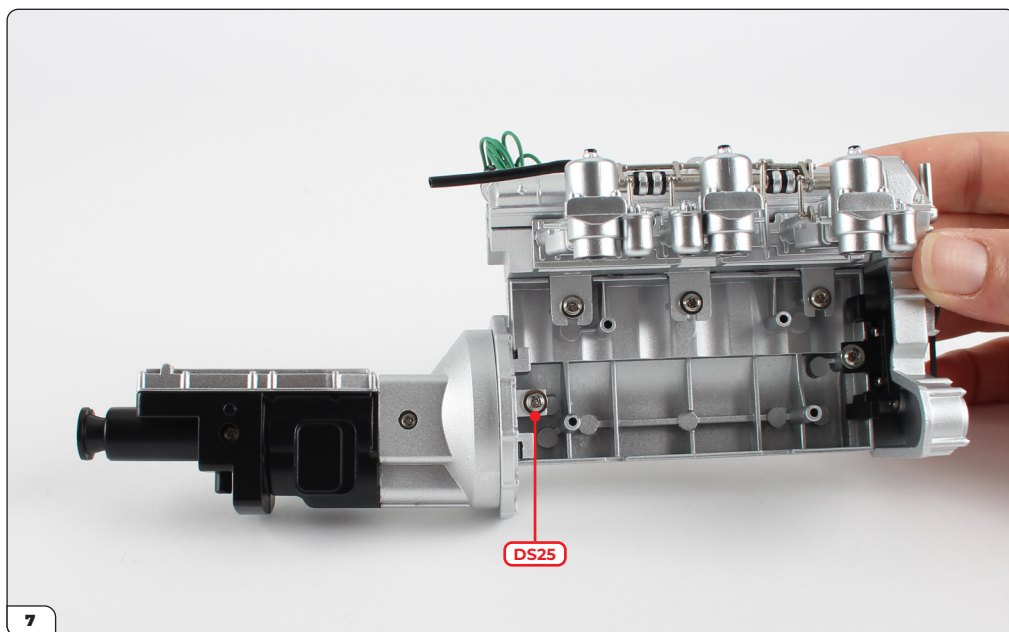
## Stage 015: Building and Attaching the Gearbox



Fit the gearbox front then secure using 2x DS01 screws.



Take the cylinder head assembly (stage 014) and press the gearbox's L-shaped fittings into the indicated recesses.



Secure using a DS25 screw.

## Stage 015: Building and Attaching the Gearbox

STAGE COMPLETE

