



Pack 11

BUILD INSTRUCTIONS

STAGE 86: FITTING THE RIGHT DOOR HANDLE

STAGE 90: FITTING THE WINDSCREEN

STAGE 87: FITTING THE RIGHT DOOR HINGE

STAGE 91: FITTING THE SPLIT REAR WINDOW

STAGE 88: DETAILING THE RIGHT DOOR
INTERIOR PANEL

STAGE 92: PREPARING THE ROOF LINER

STAGE 89: ASSEMBLING THE RIGHT WINDOW
AND DOOR

General Motors Trademarks used under license by Premium & Collectibles Trading Co. Ltd on behalf of Agora Models.

AGORA
MODELS®

Advice from the experts

Spare screws are included with each part. Occasionally, you may be instructed to keep spare or unused screws for a later stage. Keep these spares in a safe place and label them correctly.

Please make sure you don't mix up the screws. They look quite similar, but the threads do vary slightly. Using the wrong screws may damage the parts.

When securing parts together using multiple screws, fit each screw loosely to ensure all the parts are correctly aligned before gently tightening them firmly, but not overtight, in the order in which you placed them.

The screwdriver can be magnetized by stroking it with a magnet (fridge magnet, etc.) enabling it to hold the screws and make assembly easier.

If a screw is tight going into a metal part, do not force it as you may shear the head off. Remove it and put a tiny smear of Vaseline, soap or light oil on the thread. That will lubricate it and make it easier to drive home.

During the course of this build, you will receive many pieces that you will assemble immediately – following the instructions in the corresponding stage – and other pieces that you should store safely to one side, for use in future assembly stages.

Left and Right! When building your Corvette, the left- or right-hand side refers to that side as if you are sitting in the car.



WARNING: Some parts are assembled using magnets. These magnets can cause serious injury if they are swallowed. Keep away from children. If you suspect a magnet has been swallowed, seek medical help straight away.

Stage 86: Fitting the Right Door Handle

You'll now begin building the right door in the same way as before, starting by fitting the handle.

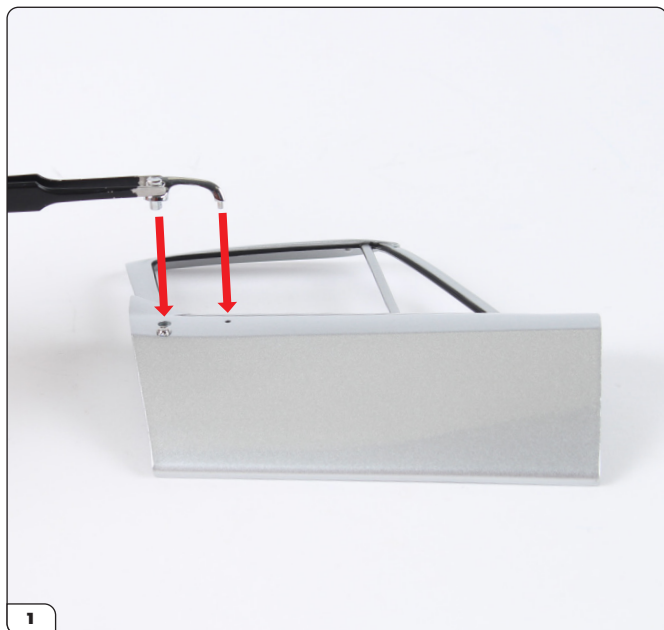


STAGE 86 PARTS LIST

Name
Right door
Right door handle
FM screws x2



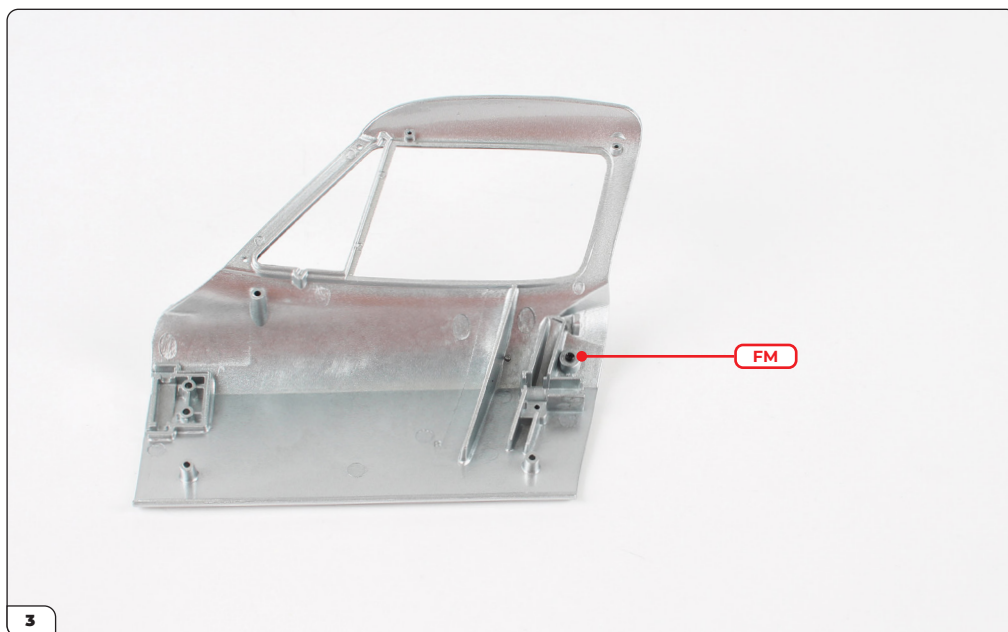
Stage 86: Fitting the Right Door Handle



Align the right door handle with the right door as shown.



Fit the handle in place.



Secure from the other side with an FM screw.

Stage 86: Fitting the Right Door Handle

STAGE COMPLETE



Stage 87: Fitting the Right Door Hinge

In this stage you'll fit the right door hinge mount and secure it using the hinge plate. The right door inside panel can be kept safely until it is needed in the next stage.

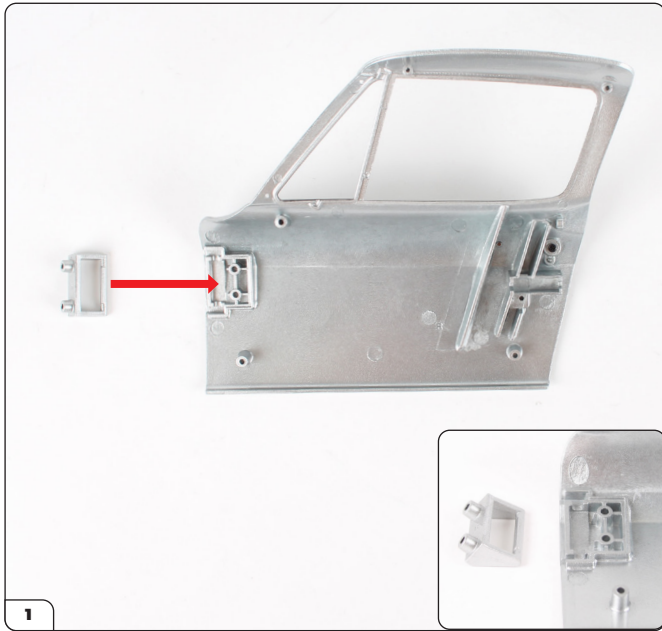


STAGE 87 PARTS LIST

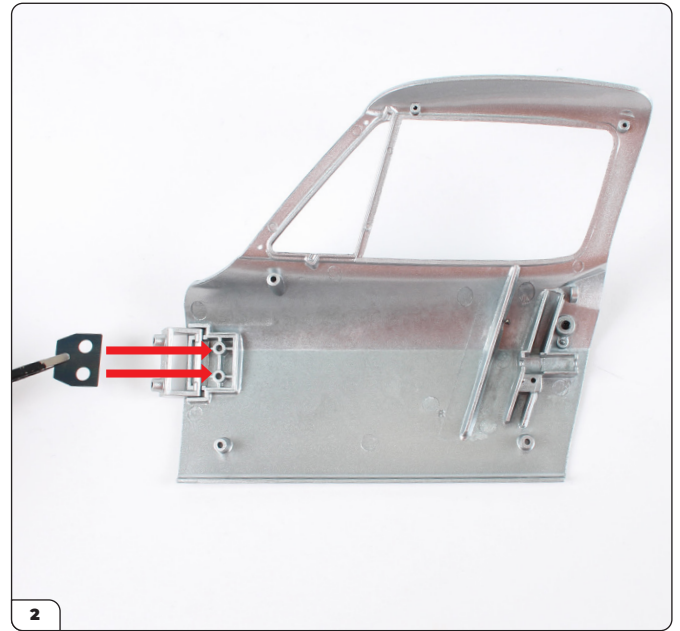
Name
Right door inside panel
Door hinge mount
Door hinge plate
VM screws x3



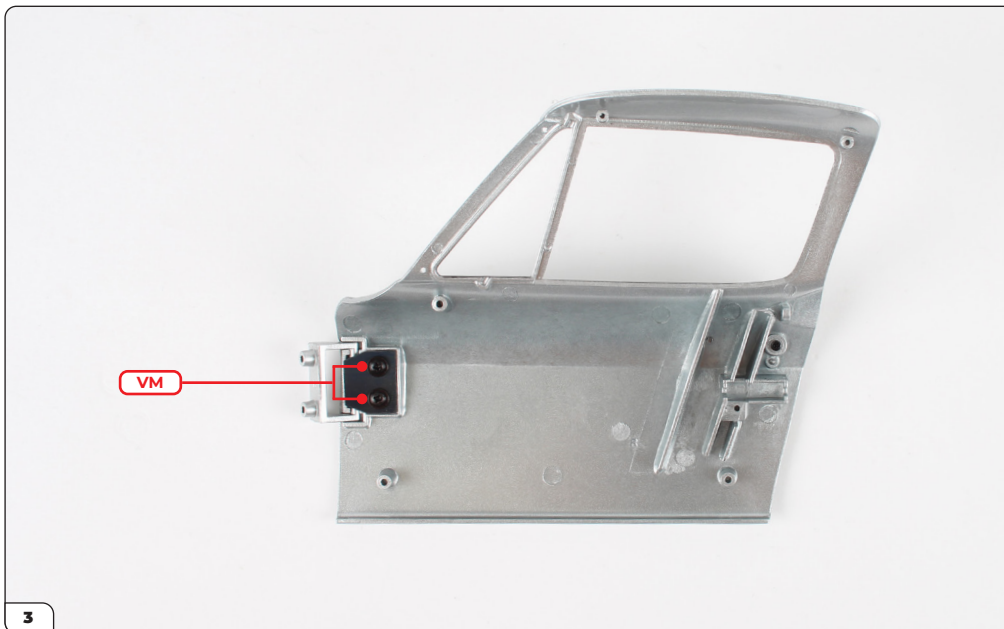
Stage 87: Fitting the Right Door Hinge



Align the door hinge mount with the right door (stage 86). Make sure the mount is oriented as shown (inset).



Place the hinge mount in position, then align the door hinge plate as shown.



Secure the hinge plate using 2x VM screws.

Stage 87: Fitting the Right Door Hinge

STAGE COMPLETE



Stage 88: Detailing the Right Door Interior Panel

In this stage you'll add details to the right door interior panel then fit it to the inside panel from stage 87.

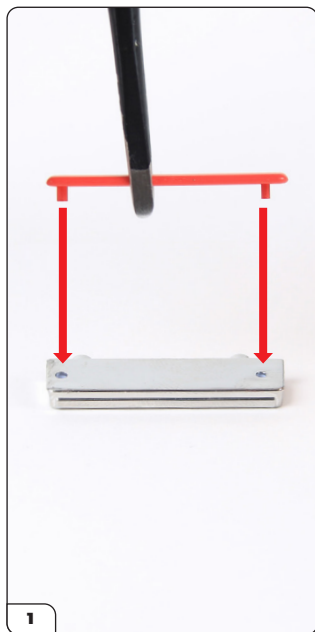


STAGE 88 PARTS LIST

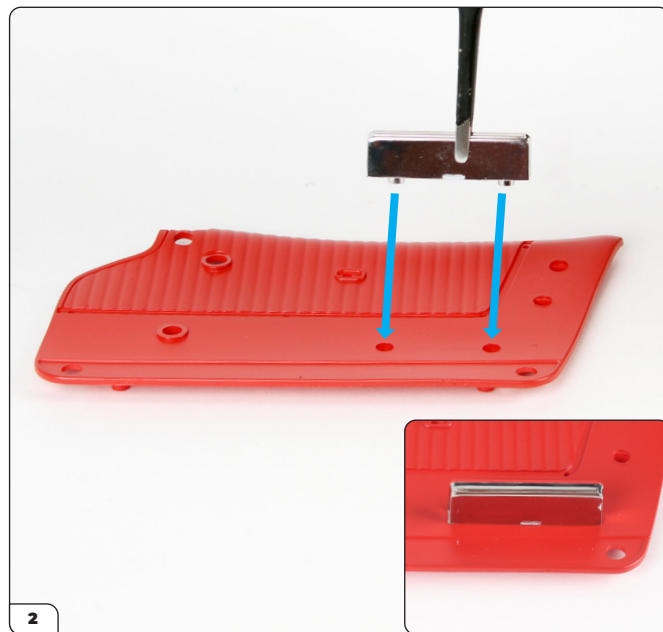
Name	Name
Right door interior panel	Door lock knob
Interior panel trim	Window crank
Handrest	Window gear (small)
Handrest cover	AP screws x8
Door lock reflector knob x2	BP screws x2
Vent window crank	PP screws x2



Stage 88: Detailing the Right Door Interior Panel



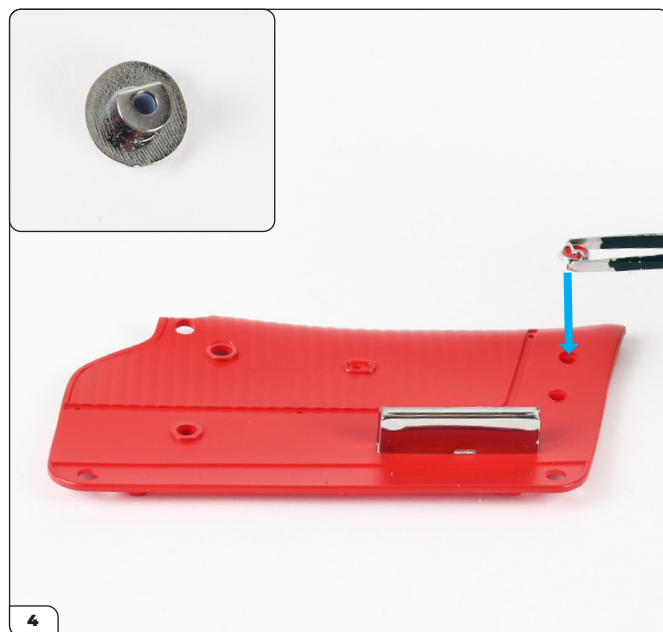
Take the handrest cover and press it into the handrest. The pins and holes are different sizes to ensure the correct fit.



Align the handrest with the interior panel as shown, then fit in place.



Secure from underneath with 2x AP screws.

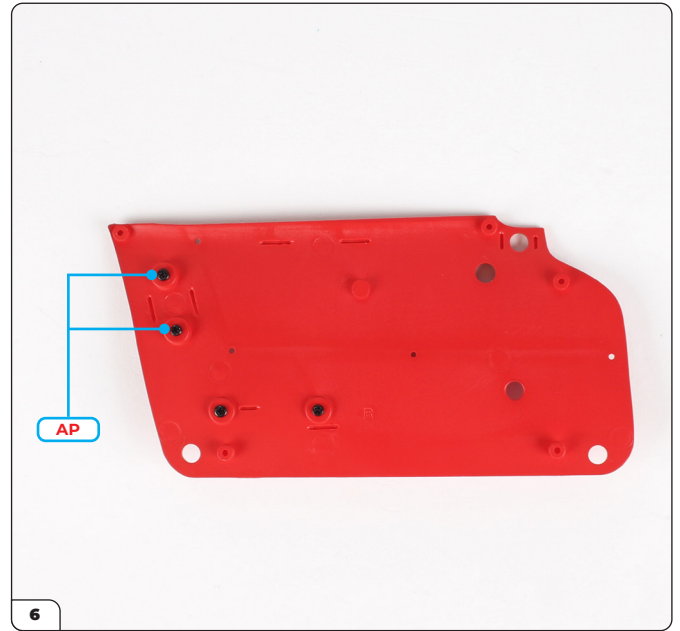


Take the door lock reflector knobs which have shaped screw holes (inset). Fit one of them into the shaped hole as shown.

Stage 88: Detailing the Right Door Interior Panel



Fit the other reflector knob in the same way.



Secure from the other side using 2x AP screws.

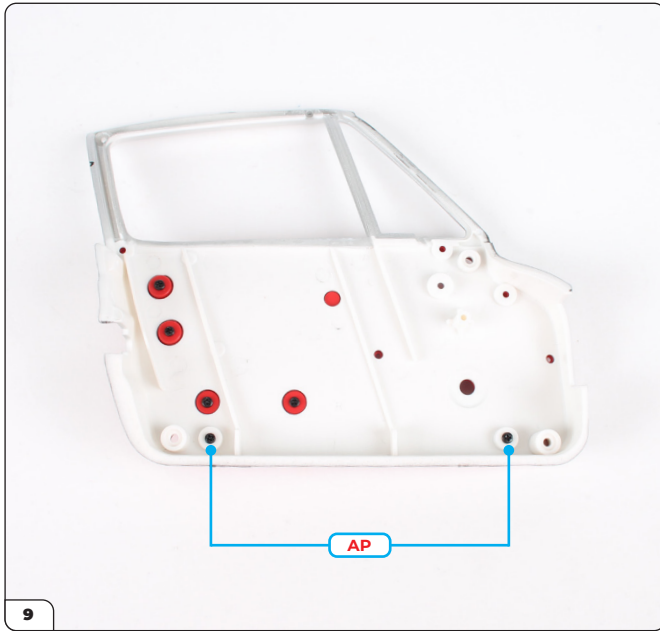


Align the interior panel with the right door inside panel from stage 87.



Fit the interior panel in place by pushing the screw columns into the holes.

Stage 88: Detailing the Right Door Interior Panel



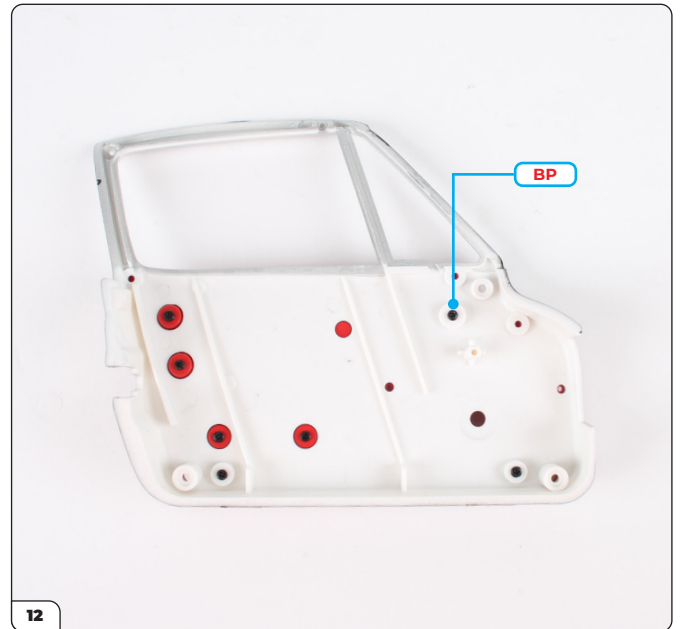
Turn the assembly over and secure with 2x AP screws.



Take the smaller vent window crank (circled) and fit it into the shaped hole.

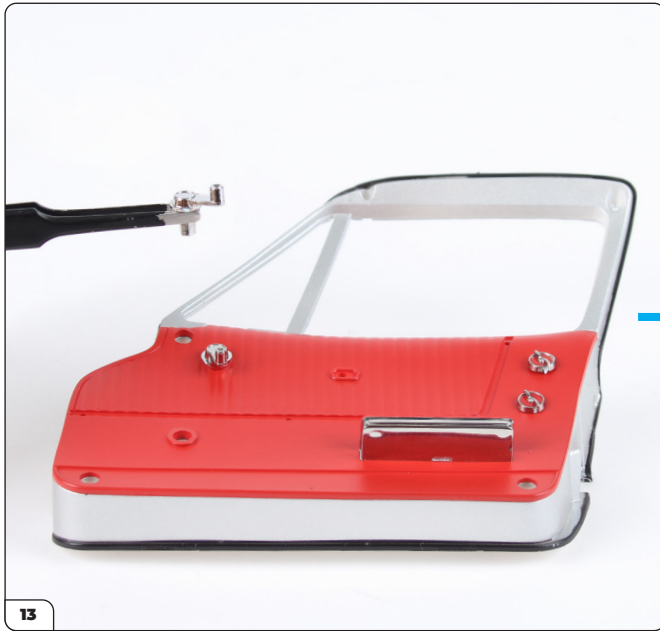


The small vent window crank should look like this.



Secure from the reverse side with a BP screw.

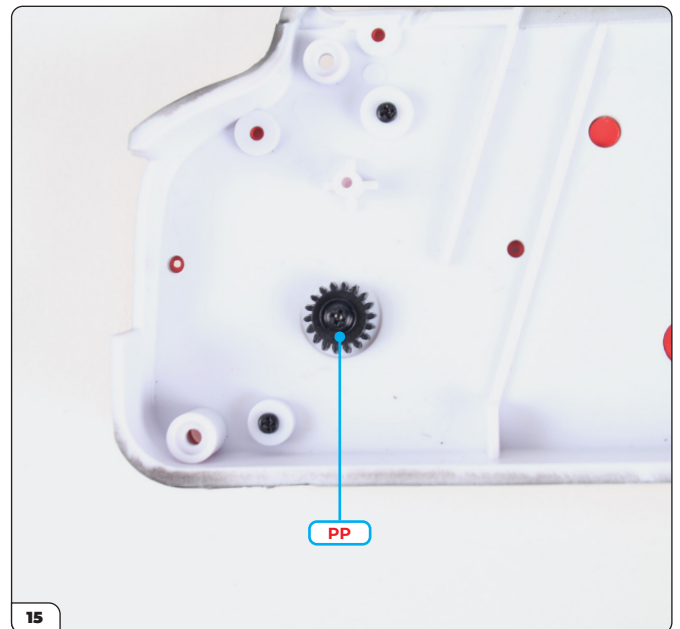
Stage 88: Detailing the Right Door Interior Panel



Fit the larger window crank into the hole as shown. This part will turn to raise or lower the window so can be fitted in any orientation.

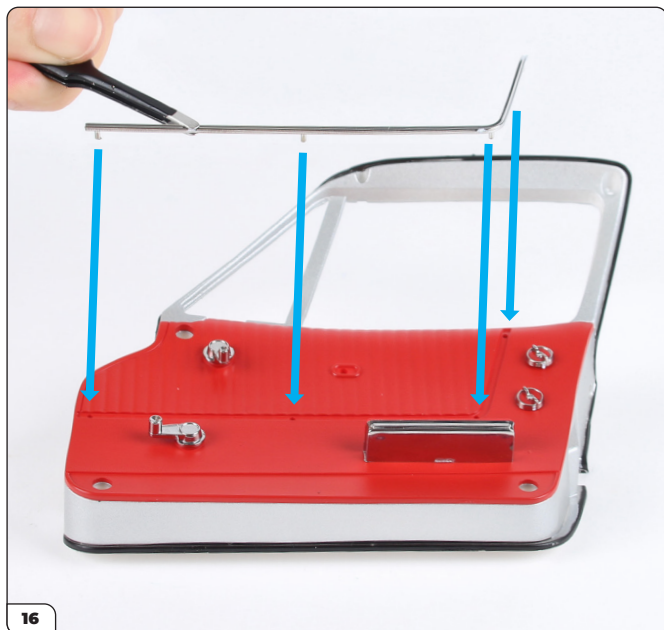


From the reverse side, fit the small window gear onto the crank, using the shaped hole (inset).



Secure with a PP screw.

Stage 88: Detailing the Right Door Interior Panel



Align the interior panel trim as shown.



Press the trim into the panel.



Fit the door lock knob into the hole as shown.



Stage 88: Detailing the Right Door Interior Panel

STAGE COMPLETE



Stage 89: Assembling the Right Window and Door

In this stage you'll assemble the mechanism for working the right window then attach the two parts of the door together.

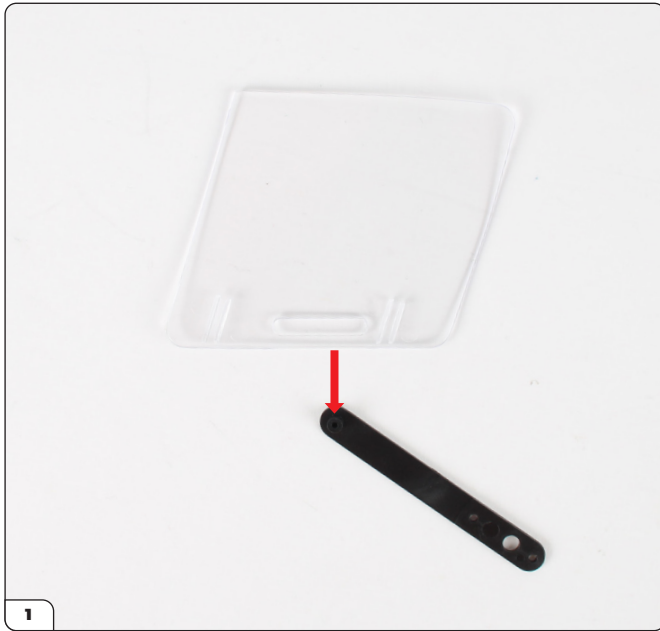


STAGE 89 PARTS LIST

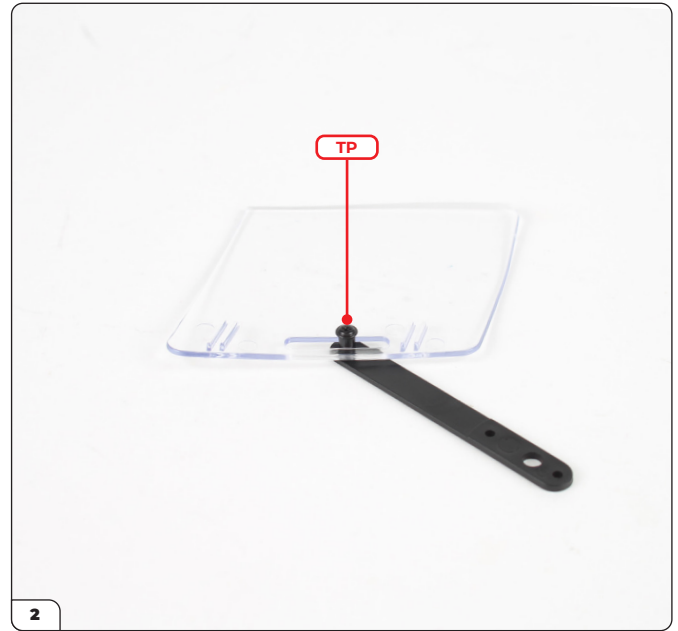
Name	Name
Right window	Right door chrome trim
Right quarter vent window	Right door carpet trim
Lock pin	DM screw x4
Spring	FM screw x3
Lock pin bushing	TP screw x3
Window gear (large)	WM screw x3
Gear arm	



Stage 89: Assembling the Right Window and Door



Align the right window with the raised screw hole on the gear arm.



Fit the window onto the gear arm and secure using a TP screw. The arm should be able to move in the channel.

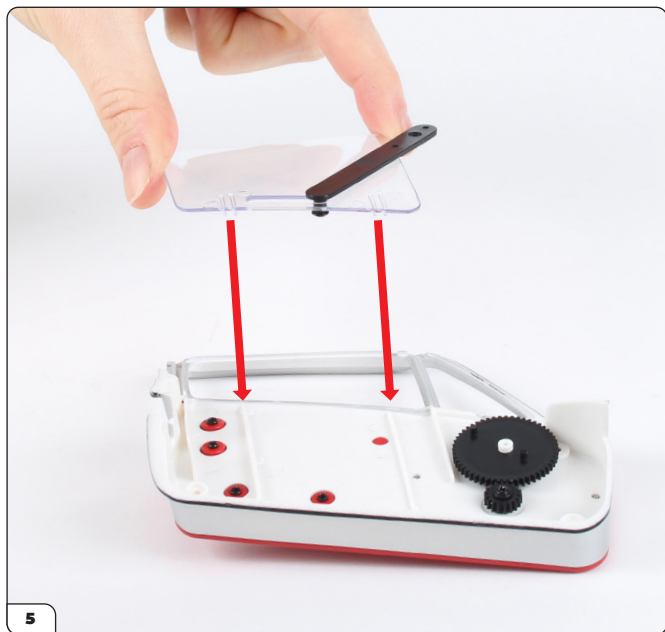


Take the interior panel assembly (stage 88) and fit the large window gear in place. The pins on the gear should face upwards as shown.



Check that the teeth and the gears are engaged, then turn the gears so that the pins on the large gear are oriented as shown.

Stage 89: Assembling the Right Window and Door



Take the right window and align it with the assembly as shown. The channels on the window fit over the ridges on the panel.



Fit the window in place.

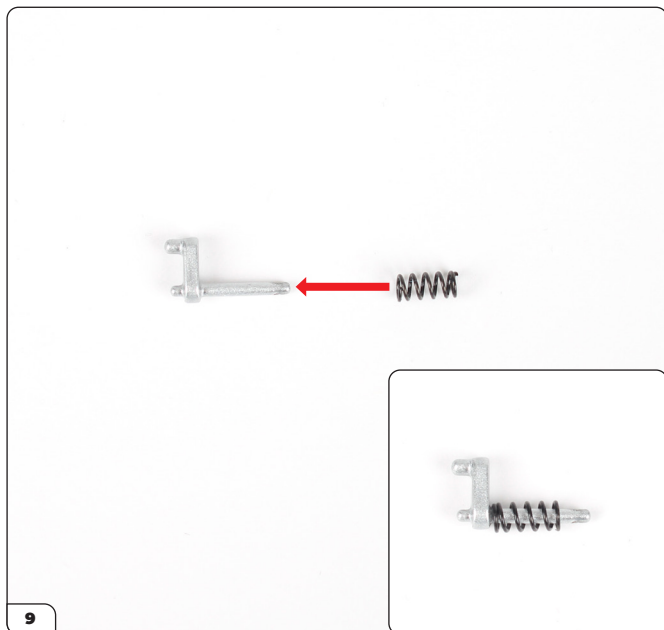


Press the smaller holes on the gear arm over the pins on the large gear.

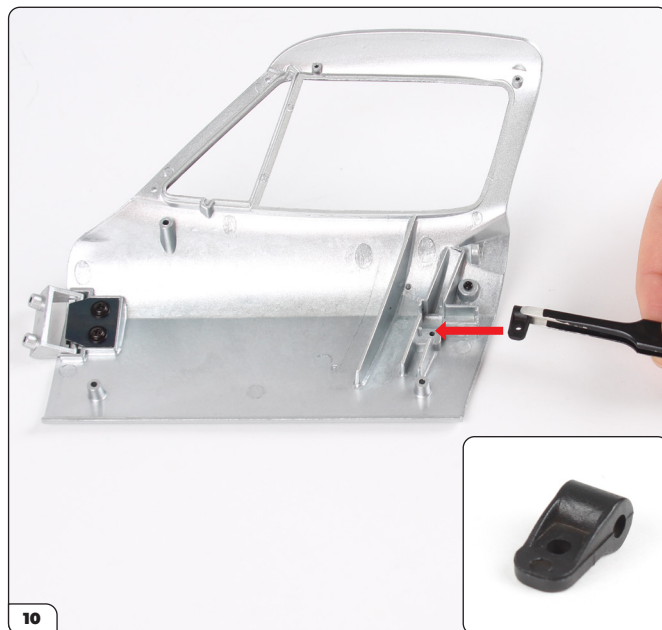


Secure in place with a TP screw.

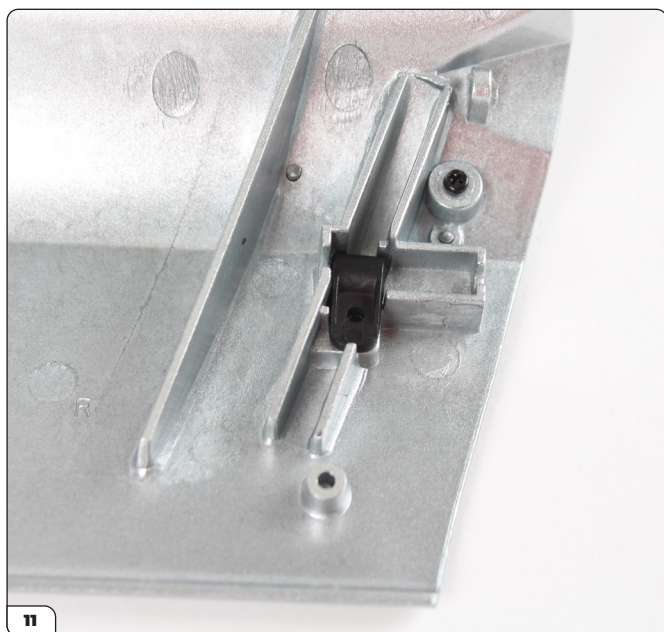
Stage 89: Assembling the Right Window and Door



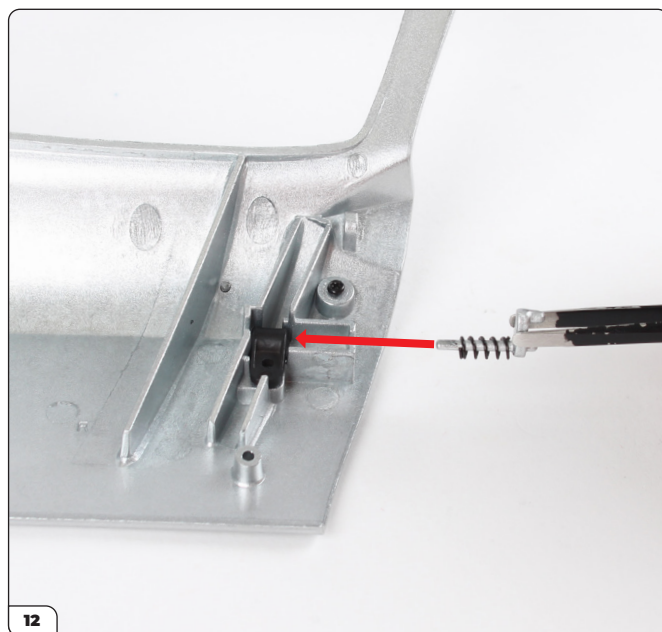
Fit the spring onto the lock pin.



Take the door assembly (stage 87) and align the lock pin bushing with it as shown. Make sure the bushing is oriented the correct way round (inset).

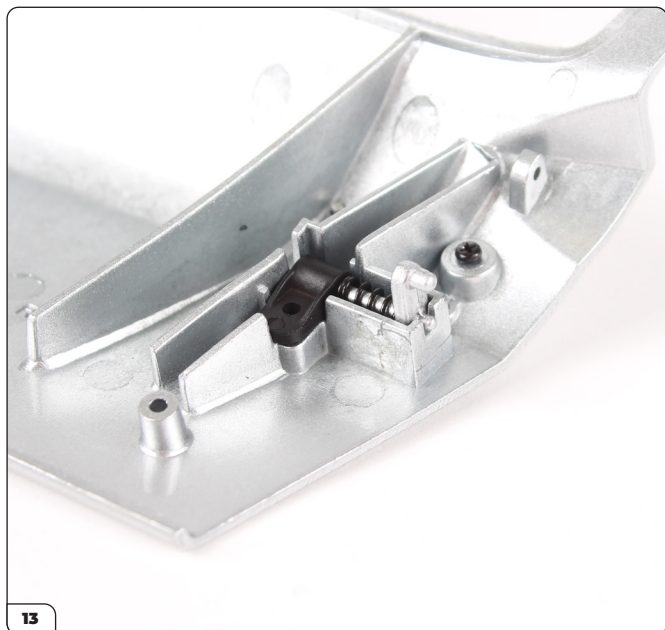


Fit the bushing in place.

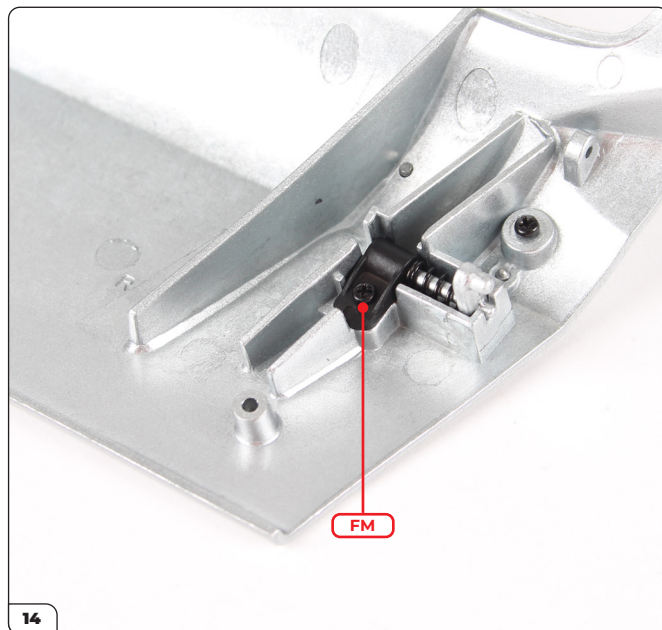


Take the lock pin and fit it into the recess next to the bushing. The end of the pin fits into the hole on the side of the bushing.

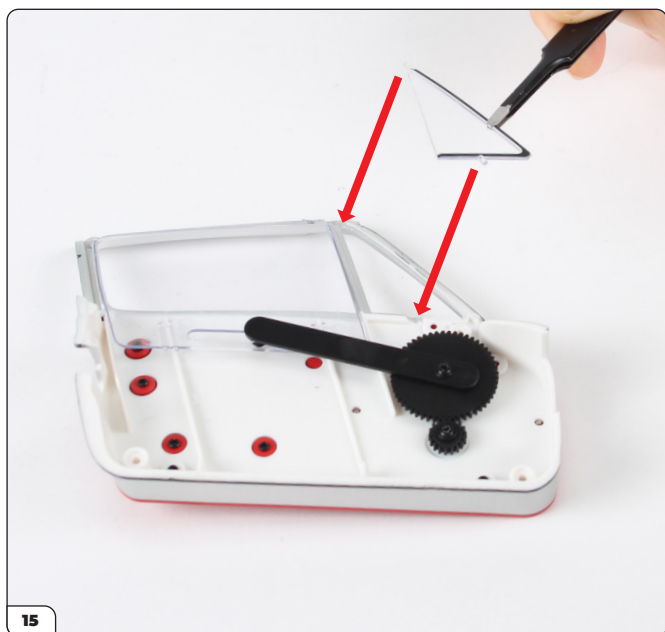
Stage 89: Assembling the Right Window and Door



The lock pin should look like this once in place.



Secure the bushing with an FM screw.



Set the door assembly to one side and take the interior panel assembly. Align the right quarter vent window as shown.

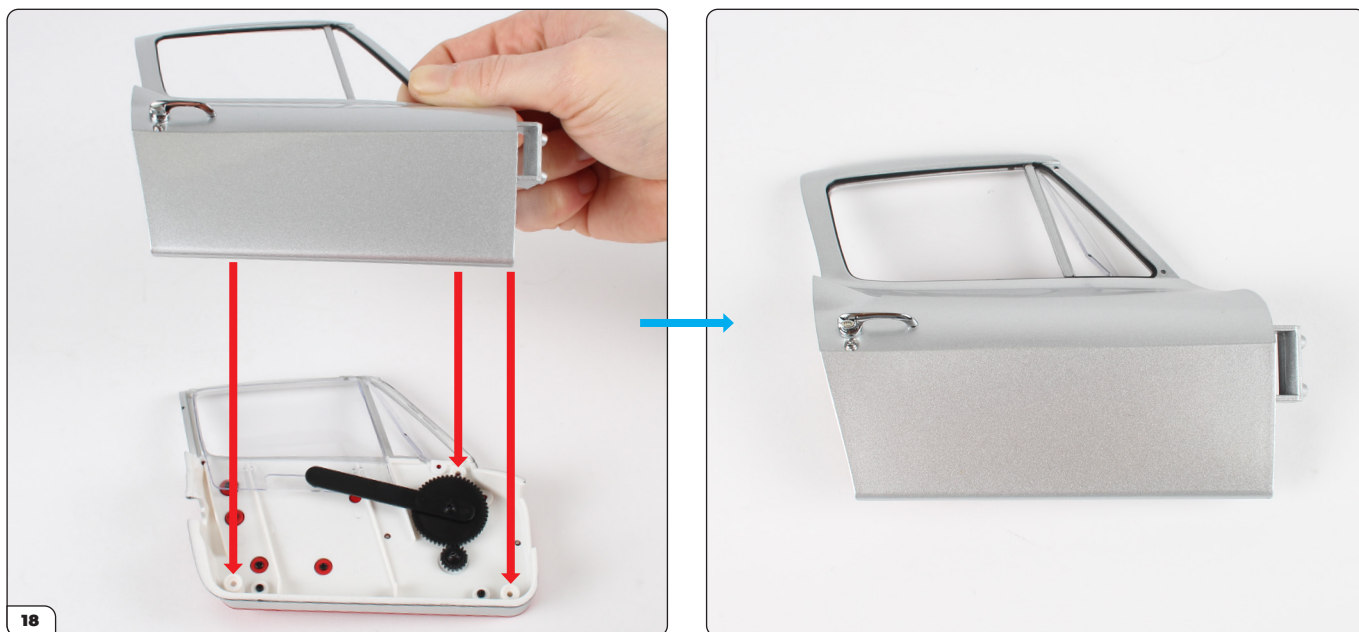


Fit the right quarter vent window in place. Make sure the pins are positioned in the recesses.

Stage 89: Assembling the Right Window and Door

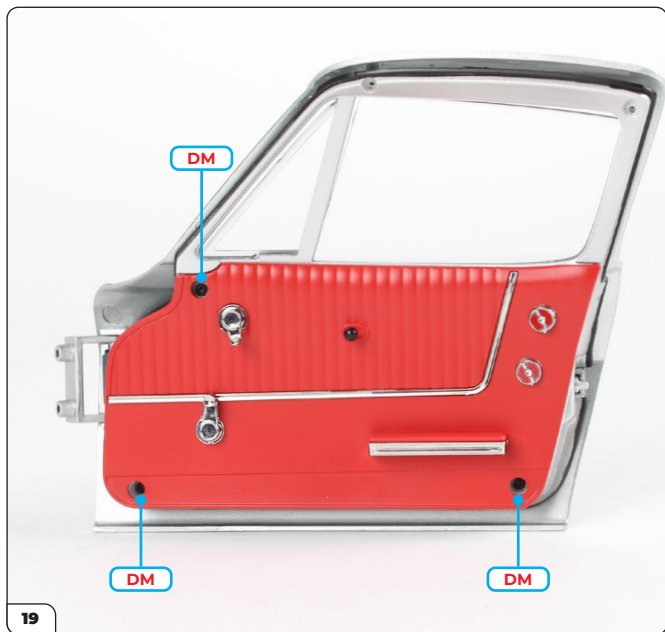


Take the door assembly and note the fixing points for the two parts.

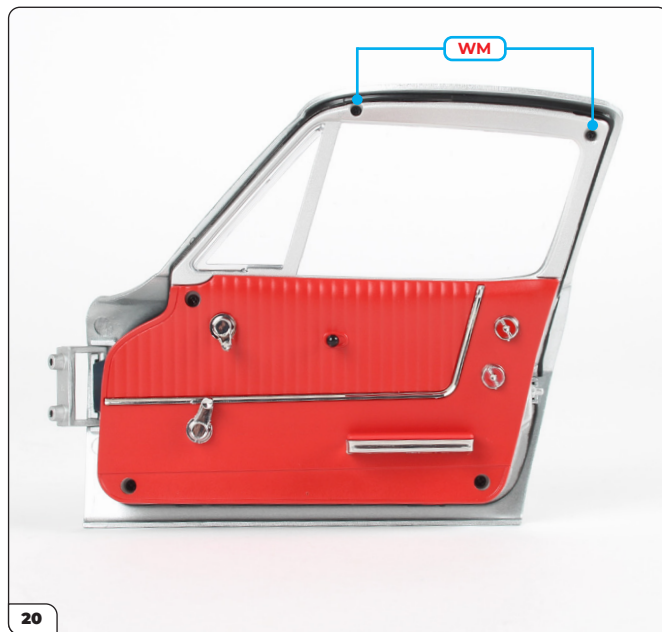


The windows are loose so it is easier to fit the door onto the panel. Fit the parts together, making sure the quarter vent window pins stay in position (see step 16).

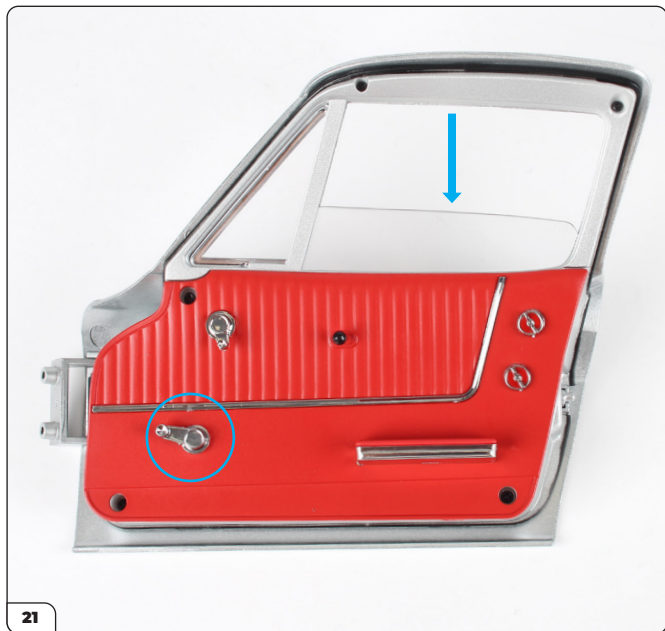
Stage 89: Assembling the Right Window and Door



Use 3x DM screws to secure the parts together.



Use 2x WM screws to secure the top part of the door.



Test the function of the window by turning the window crank.



Peel the backing paper from the right door carpet trim (inset) then carefully stick the corner into the recess on the interior panel.

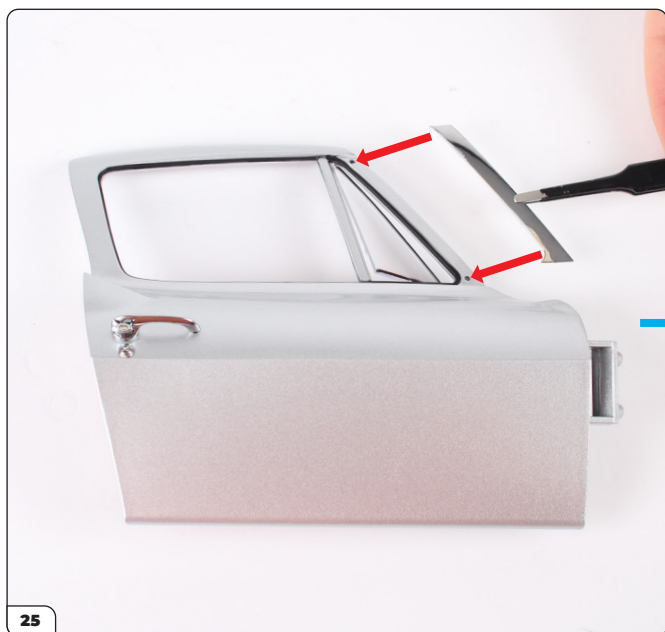
Stage 89: Assembling the Right Window and Door



Press the carpet trim in place, using the recess to align it.



Drive an FM screw into the hole located near to the lock pin.



Take the right door chrome trim and align it with the section next to the quarter vent window as shown. Press the trim into the two holes firmly.



Stage 89: Assembling the Right Window and Door

STAGE COMPLETE



Stage 90: Fitting the Windscreen

In this stage you'll fit the windscreen frame and glass to the main body.

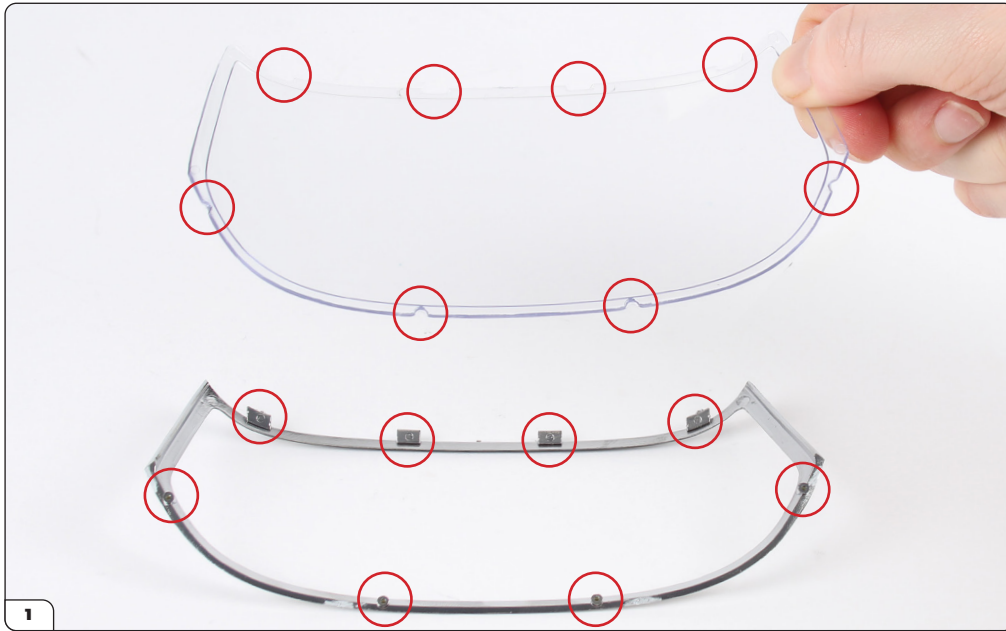


STAGE 90 PARTS LIST

Name
Windscreen frame
Windscreen glass
UP screw x3
VP screw x3



Stage 90: Fitting the Windscreen



Align the windscreen glass and frame as shown. Note the eight connection points on each of the parts.

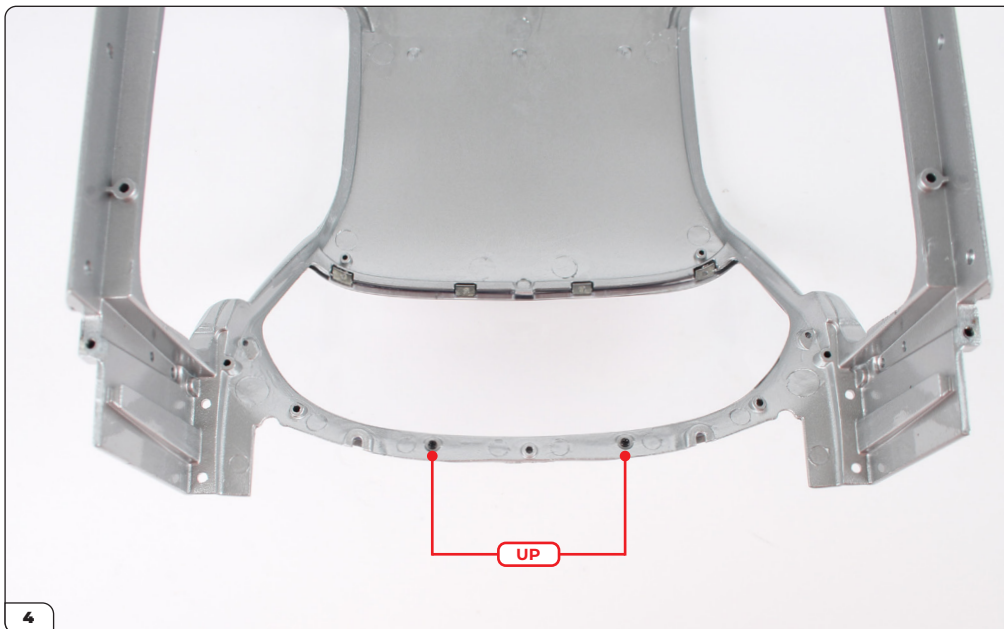


Fit the two parts together.

Stage 90: Fitting the Windscreen

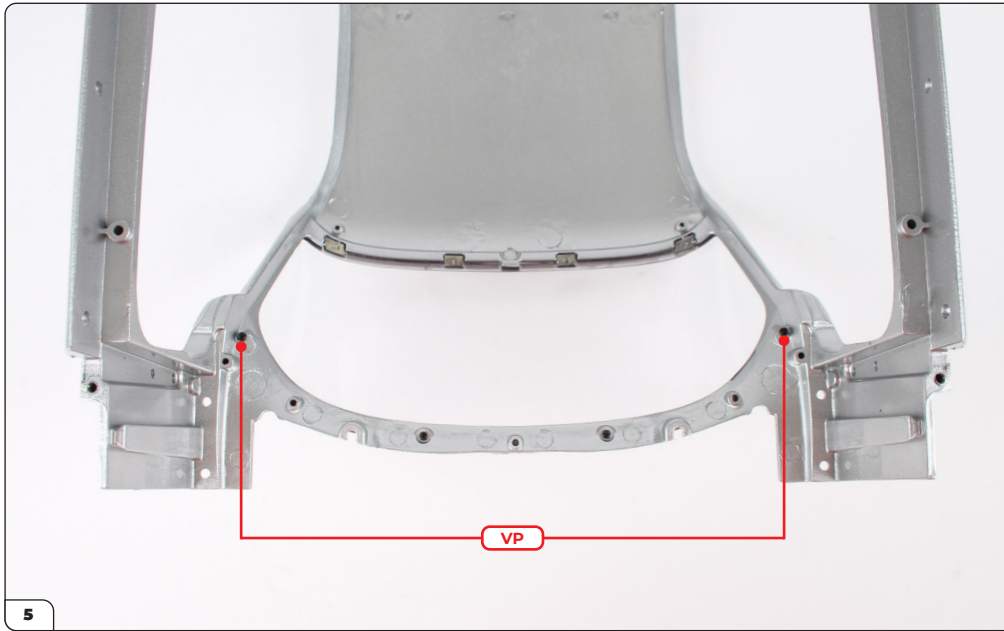


Align the windscreen frame with the main body (stage 85) as shown. Fit the windscreen frame into the four tabs (arrows) and four screw holes (circled) on the main body.



Turn the assembly over and drive 2x UP screws into the frame. Take care not to let the screwdriver slip and scratch the windscreen.

Stage 90: Fitting the Windscreen



Secure the corners of the frame with 2x VP screws.



Stage 91: Fitting the Split Rear Window

In this stage you'll fit one of the most iconic features of the 1963 Corvette Sting Ray, the split rear screen window.

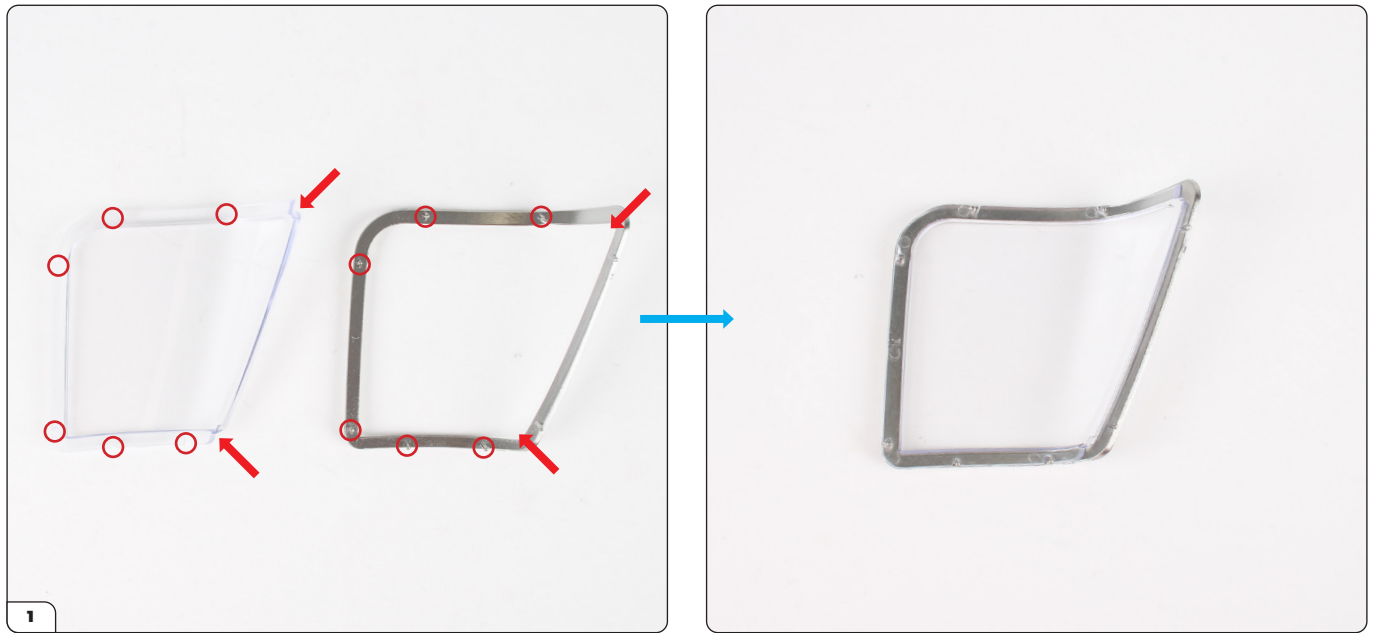


STAGE 91 PARTS LIST

Name
Rear left window glass
Rear right window glass
Rear left window frame
Rear right window frame



Stage 91: Fitting the Split Rear Window

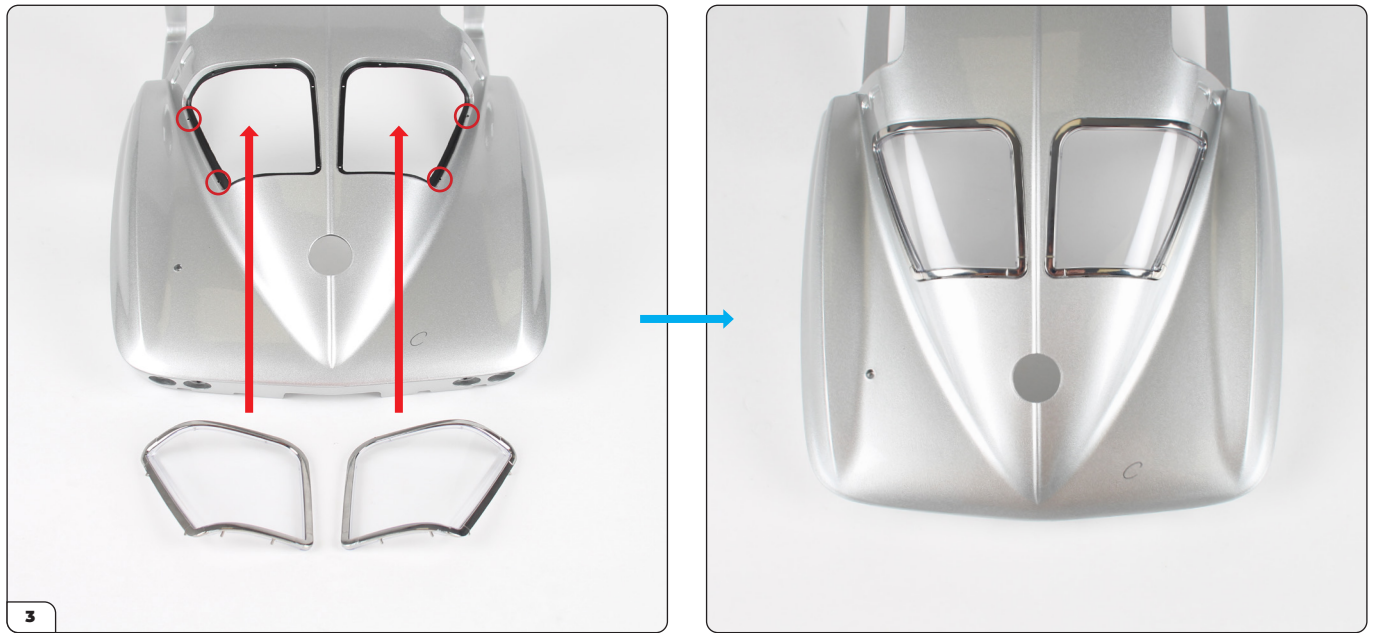


Align the left rear window glass and frame as shown. Fit the glass into the frame, starting with the corners on the diagonal side (arrows). Once the corners are in place, push the holes over the corresponding pins (circled).



Fit the right rear window glass and frame together in the same way. Note the frames are marked with 'L' and 'R' (circled) to help when fitting them to the main body.

Stage 91: Fitting the Split Rear Window



Align the rear left and right windows with the main body as shown. Fit the frames in place, making sure to start by pressing the pins into the holes on the outer edge (circled).



Stage 92: Preparing the Roof Liner

In this stage you'll prepare the roof liner by fitting the interior light and securing its LED.



STAGE 92 PARTS LIST

Name
Roof liner
Interior light glass
Interior light frame
Adhesive tape x3
WP screw x3



Stage 92: Preparing the Roof Liner



Take the interior light glass and frame. The pin and hole ensure the parts fit together in the correct way.



Fit the frame onto the glass. Note that the pin protrudes slightly from the frame.

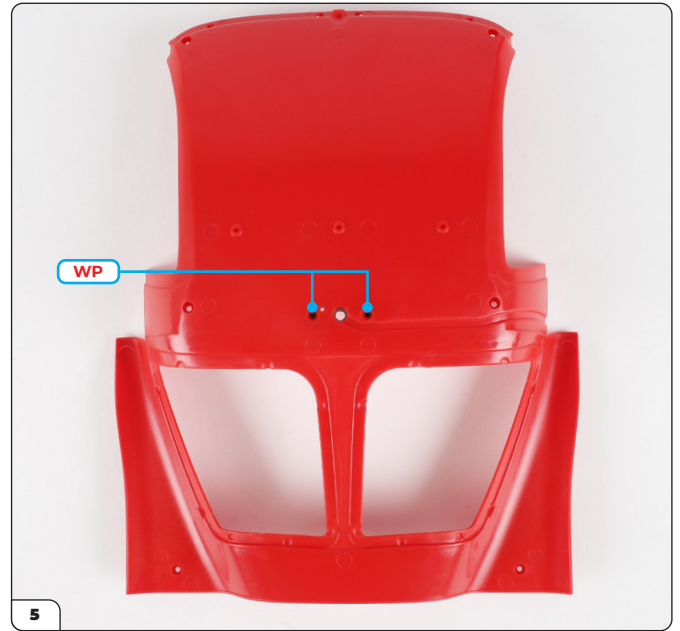


The pin fits into the small hole (circled) on the roof liner to ensure the correct alignment.

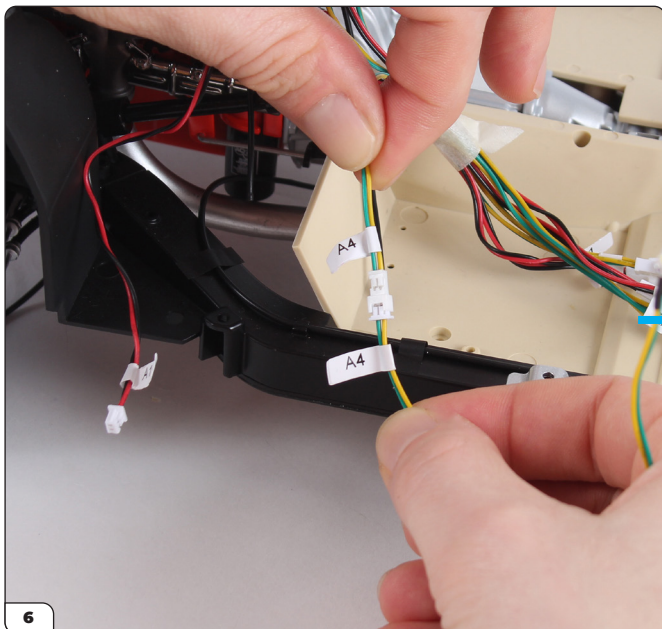
Stage 92: Preparing the Roof Liner



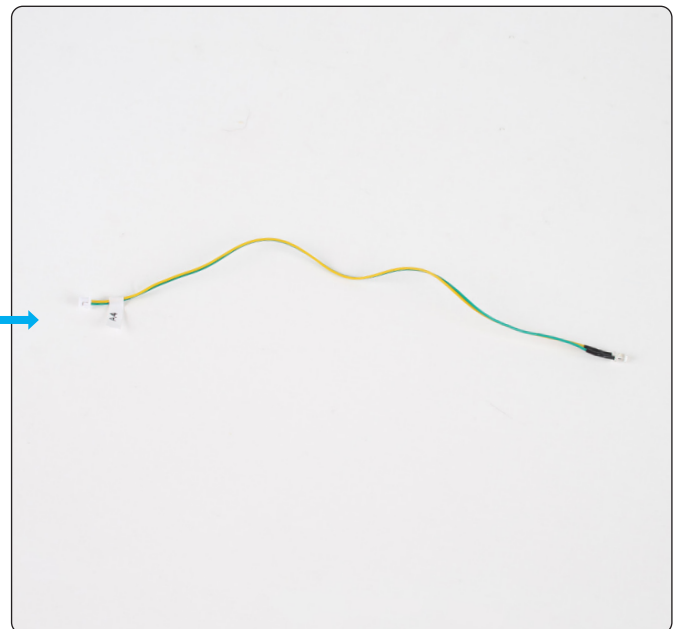
Fit the interior light in place.



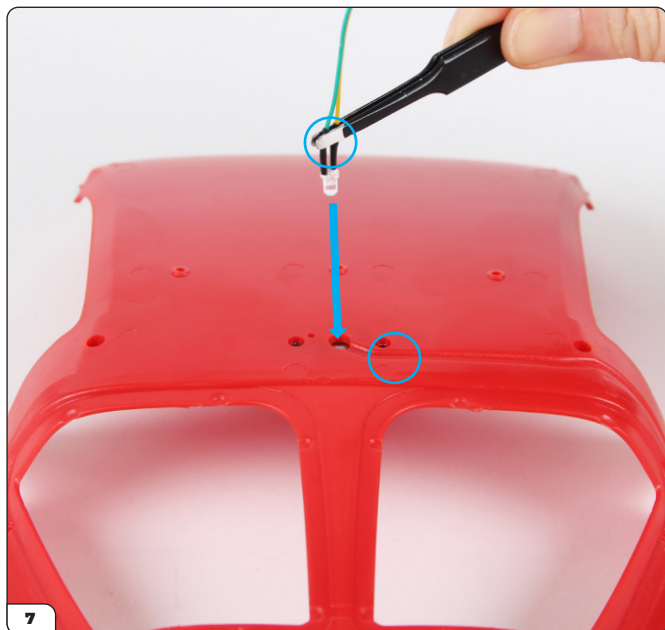
Turn the assembly over and secure with 2x WP screws.



Retrieve the main assembly and locate the interior light LED cable (marked 'A4'). Disconnect the cable.



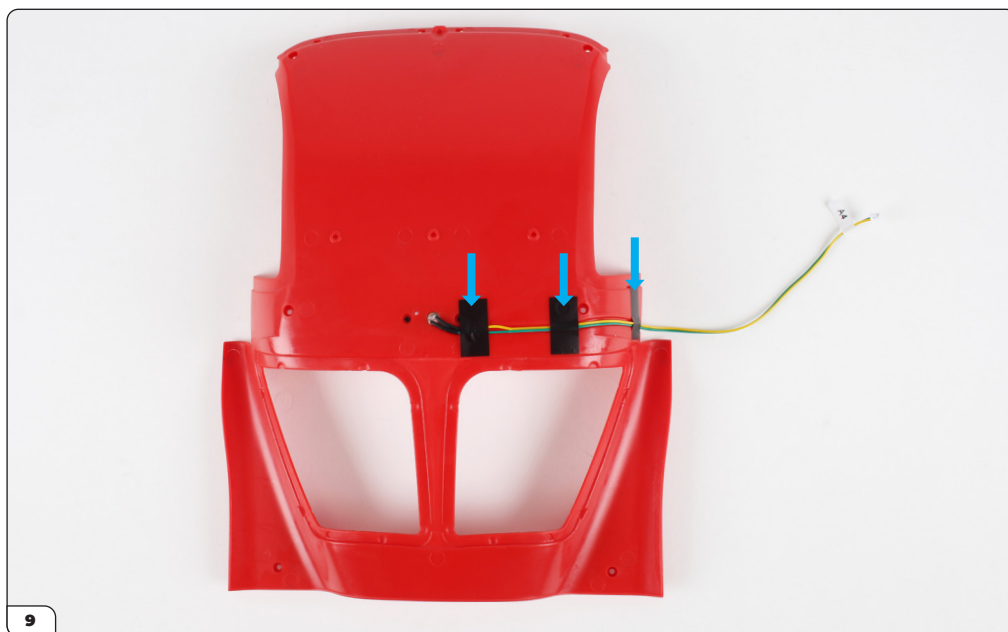
Stage 92: Preparing the Roof Liner



Align the bulb with the hole in the roof liner. Orient the wires towards the channel (circled).



Fit the bulb into the hole, then bend the wires carefully and run them through the channel as shown.



Secure the wire in the channel using the adhesive tape.

Stage 92: Preparing the Roof Liner

STAGE COMPLETE

