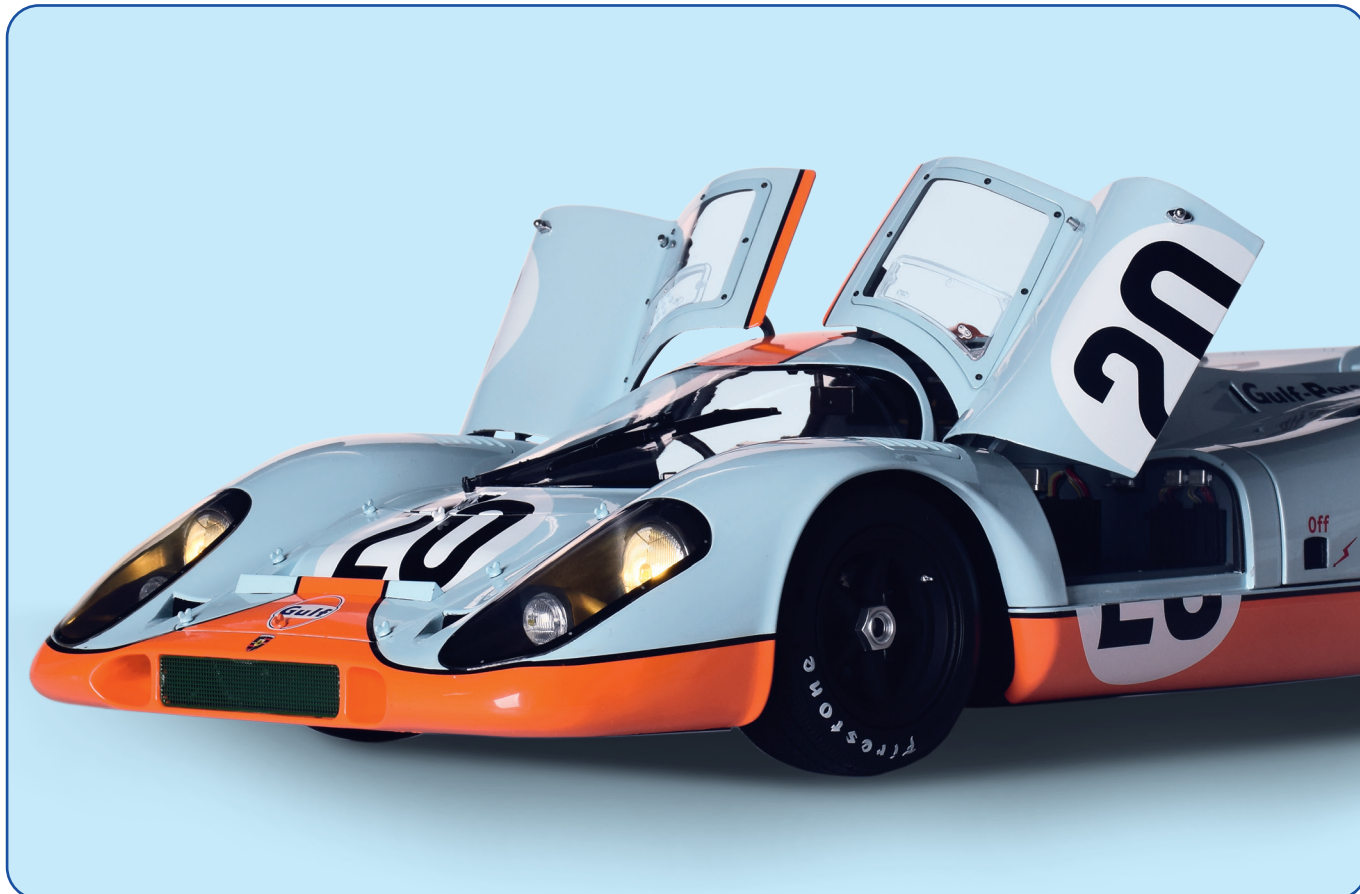


STEVE MCQUEEN'S ICONIC  
**PORSCHE**  
**917KH**



# Pack 01

## BUILD INSTRUCTIONS

STAGE 01: LEFT HEADLIGHT

STAGE 02: STEERING WHEEL AND FRONT TYRE

STAGE 03: LEFT FRONT SUSPENSION AND BRAKE DISC

STAGE 04: RIGHT-SIDE OF GEARBOX AND TRANSMISSION JOINT

STAGE 05: UNDERSIDE OF GEARBOX AND STARTING SYSTEM

Porsche, the Porsche shield and the distinctive design of Porsche cars are trademarks and trade dress of Porsche AG. Permission granted.

The Gulf trademarks are used under license from Gulf Oil International Ltd.

Personality rights of Steve McQueen are used with permission of Chadwick McQueen and The Terry McQueen Testamentary Trust.

Represented exclusively by Greenlight.

**AGORA**  
MODELS

# Advice from the experts

---

Spare screws are included with each part. Occasionally, you may be instructed to keep spare or unused screws for a later stage. Keep these spares in a safe place and label them correctly.

Please make sure you don't mix up the screws. They look quite similar, but the threads do vary slightly. Using the wrong screws may damage the parts.

When securing parts together using multiple screws, fit each screw loosely to ensure all the parts are correctly aligned before gently tightening them firmly, but not overtight, in the order in which you placed them.

The screwdriver can be magnetized by stroking it with a magnet (fridge magnet, etc.) enabling it to hold the screws and make assembly easier.

If a screw is tight going into a metal part, do not force it as you may shear the head off. Remove it and put a tiny smear of Vaseline, soap or light oil on the thread. That will lubricate it and make it easier to drive home.

During the course of this build, you will receive many pieces that you will assemble immediately – following the instructions in the corresponding stage – and other pieces that you should store safely to one side, for use in future assembly stages.

Left and Right! When building your Porsche, the left or right hand side refers to each side as you are sitting in the car.



**WARNING:** Some parts are assembled using magnets. These magnets can cause serious injury if they are swallowed. Keep away from children. If you suspect a magnet has been swallowed, seek medical help straight away.

# STAGE 01: LEFT HEADLIGHT

- 1A** Left door
- 1B** Hood cover
- 1C** Left headlight screen
- 1D** Left headlight housing
- 1E** Left headlight bezel
- 1F** Left headlight reflector
- 1G** Left headlight lens
- 1H** Left small headlight housing
- 1I** Small headlight lens
- AP** Screw 1.7 x 4mm (x2)
- BP** Screw 1.7 x 4 x 5mm (x2)



## Note:

The left headlight assembly has been improved, with the new parts and assembly instructions supplied in Pack 11. Take the screwdriver out of the packaging and keep the parts supplied in a safe place until they are needed later in the build. You can proceed straight to Stage 2 to begin.

## Tip:

Don't remove the protective film from the left headlight screen until instructed to do so!

# STAGE 02: STEERING WHEEL AND FRONT TYRE

**2A** Steering wheel

**2B** Steering column

**2C** Steering wheel badge

**2D** Front wheel tyre

**2E** Front wheel outer rim

**2F** Front wheel inner rim

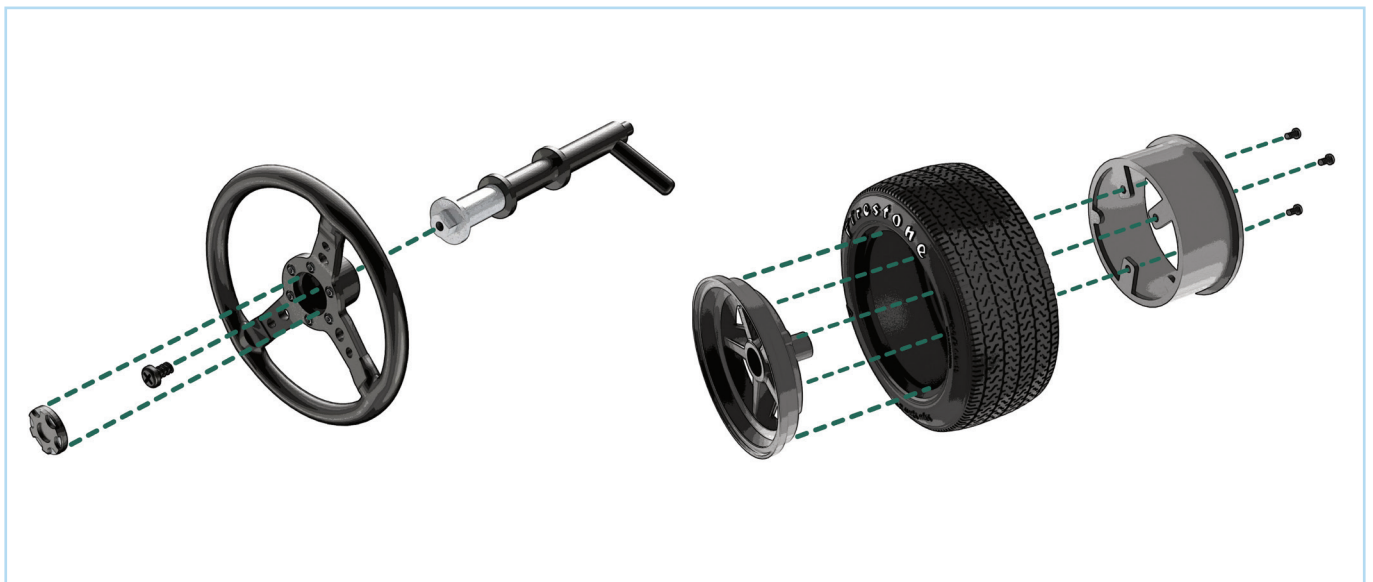
**2G** Hub cap

**AM** Screw 1.7 x 3mm (x2)

**BM** Screw 2.0 x 4mm (x4)



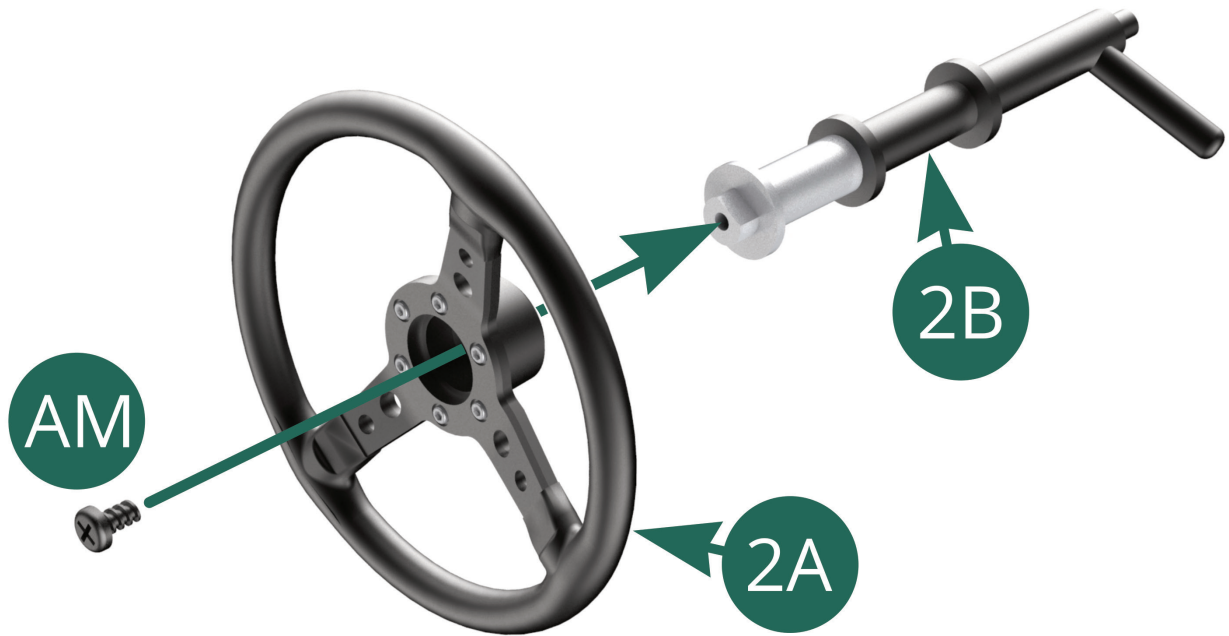
## ASSEMBLY DIAGRAM



# STAGE 02: STEERING WHEEL AND FRONT TYRE

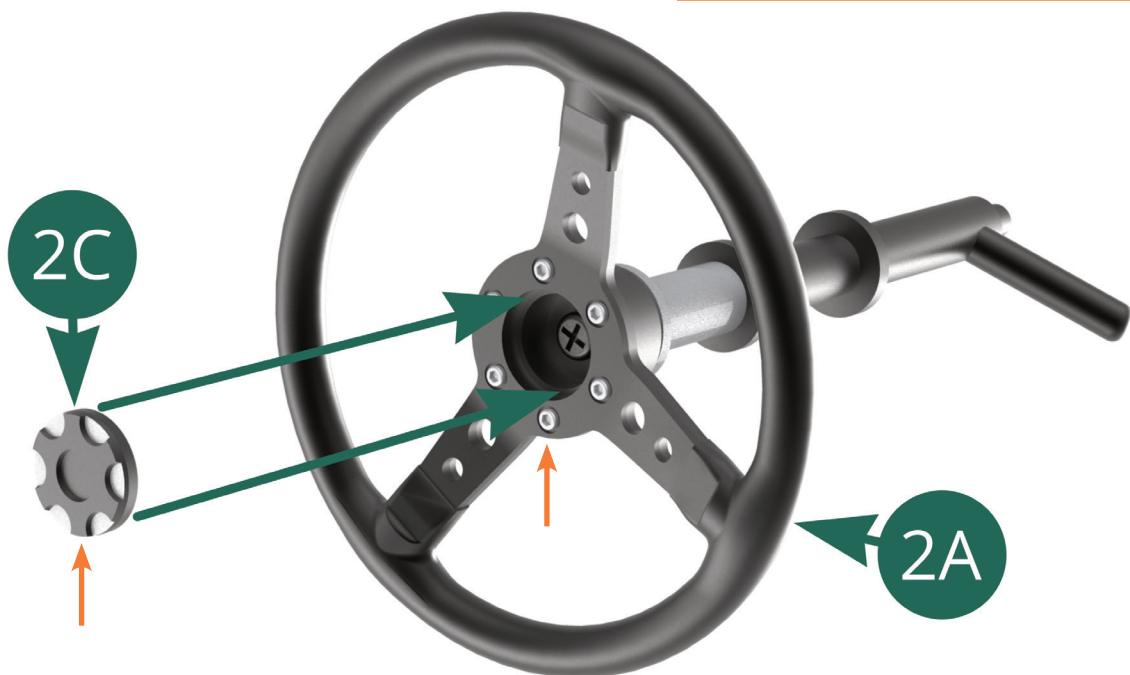
## STEP 1

Fit the **steering wheel (2A)** on the **steering column (2B)** and secure it with an **AM screw**.



Press the **steering wheel badge (2C)** into the centre of the **steering wheel (2A)**.

Take care to align the raised black area of the badge with the silver 'screws' of the steering wheel (orange arrows) before pushing in place!



# STAGE 02: STEERING WHEEL AND FRONT TYRE

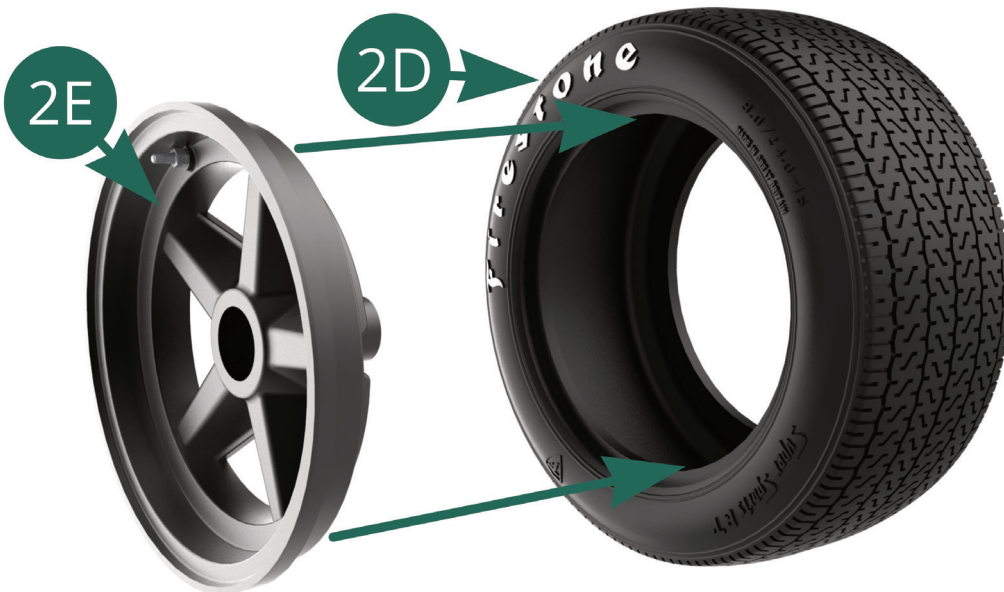
## STEP 2

Steering wheel assembly



Firmly press the **front wheel outer rim (2E)** into the **front wheel tyre (2D)**.

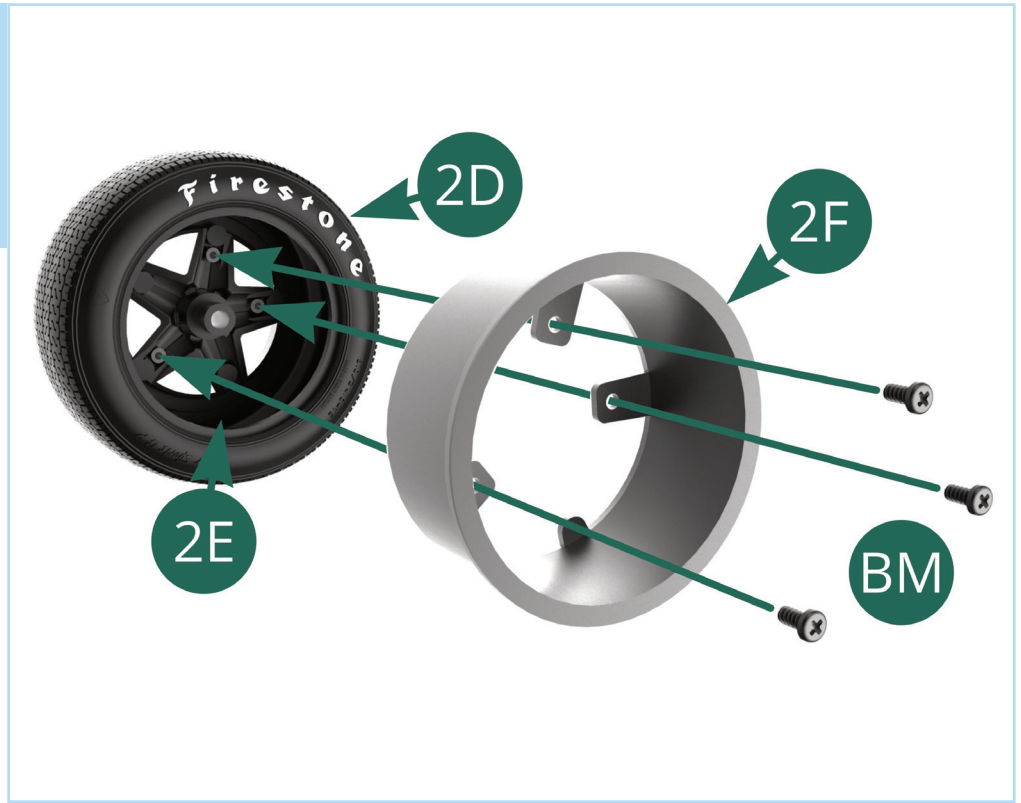
**Note:**  
The two sides of the tyre are not the same. If the outer rim does not fit in the tyre firmly, fit it in the other side.



# STAGE 02: STEERING WHEEL AND FRONT TYRE

## STEP 3

Position the **front wheel inner rim (2F)** on the front wheel as shown and secure it to the **outer rim (2E)** with three **BM** screws.



## STAGE COMPLETE



# STAGE 03: LEFT FRONT SUSPENSION AND BRAKE DISC

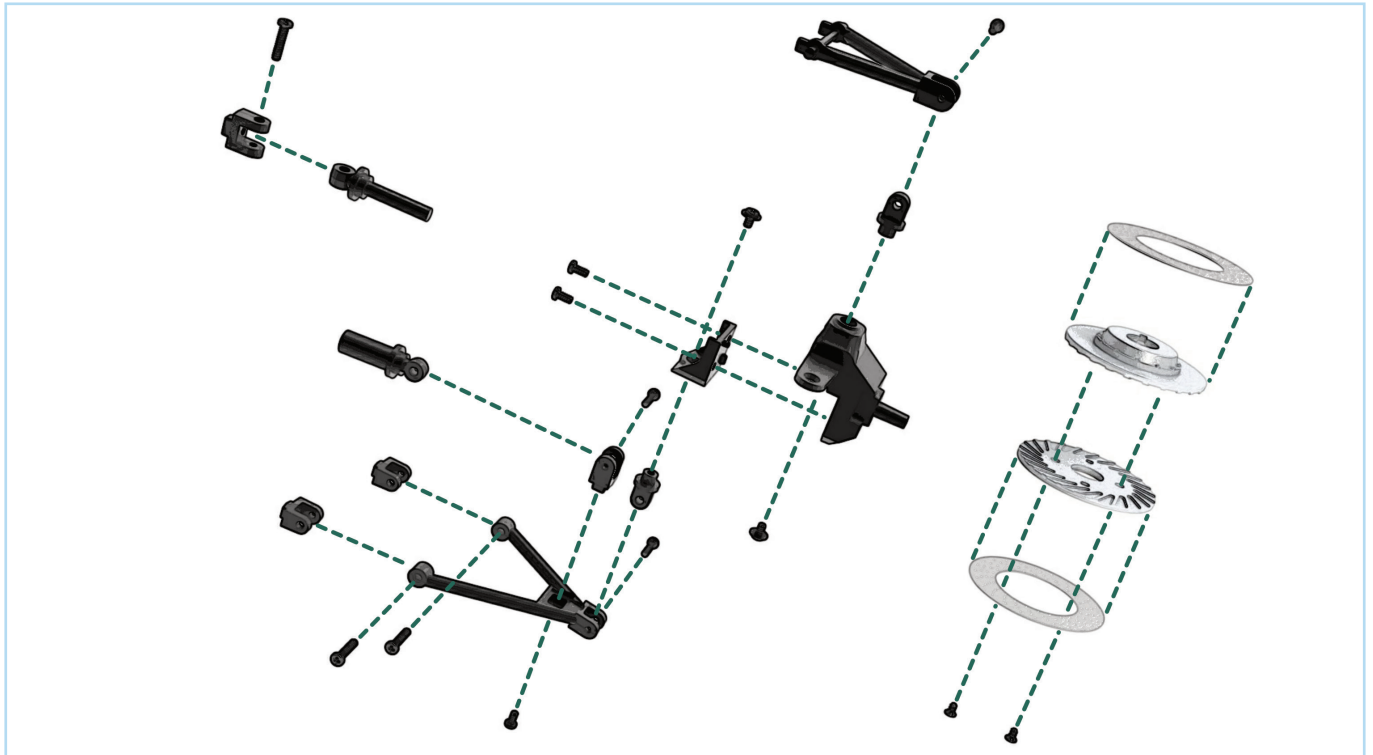
- 3A** Upper control arm
- 3B** Shock absorber upper bracket (marked '1')
- 3C** Shock absorber piston
- 3D** Shock absorber spring
- 3E** Shock absorber cylinder
- 3F** Shock absorber lower bracket (marked '2')
- 3G** Hub carrier top
- 3H** Hub carrier bottom
- 3I** Lower control arm
- 3J** Lower control arm bracket (x2, marked '3')
- 3K** Hub carrier joint (x2)
- 3L** Brake disc outer surface (blue arrow indicates direction of the ventilation holes)
- 3M** Brake disc inner surface (blue arrow indicates direction of the ventilation holes)
- 3N** Brake disc rotor (inner half)
- 3O** Brake disc rotor (outer half)
- BM** Screw 2.0 x 4mm (x4)
- CM** Screw 2.0 x 3 x 5mm (x3)
- DM** Screw 2.0 x 8mm (x4)
- EM** Screw 2.0 x 9mm (x4)
- CP** Screw 1.7 x 3mm (x3)





# STAGE 03: LEFT FRONT SUSPENSION AND BRAKE DISC

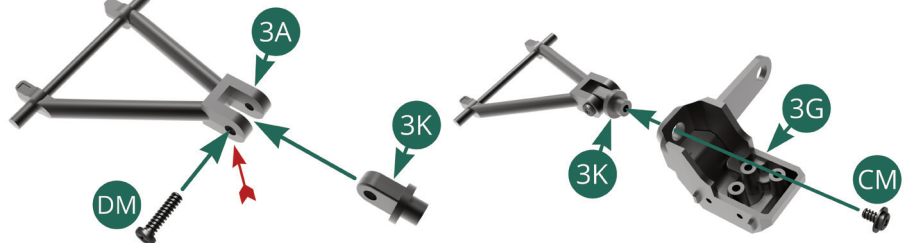
## ASSEMBLY DIAGRAM



### STEP 1

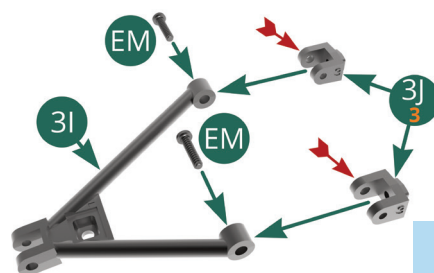
Insert a **hub carrier joint (3K)** into the **upper control arm (3A)** and fix it with a **DM** screw by passing it through the hole marked with a red arrow.

Push the top of the **hub carrier joint (3K)** into the **hub carrier top (3G)** and secure it with a **CM** screw.

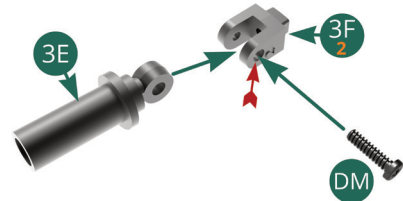


### STEP 2

Position the two **lower control arm brackets (3J, marked '3')** on the **lower control arm (3I)** and secure each of them with an **EM** screw, driving each screw through the holes marked with a red arrow.

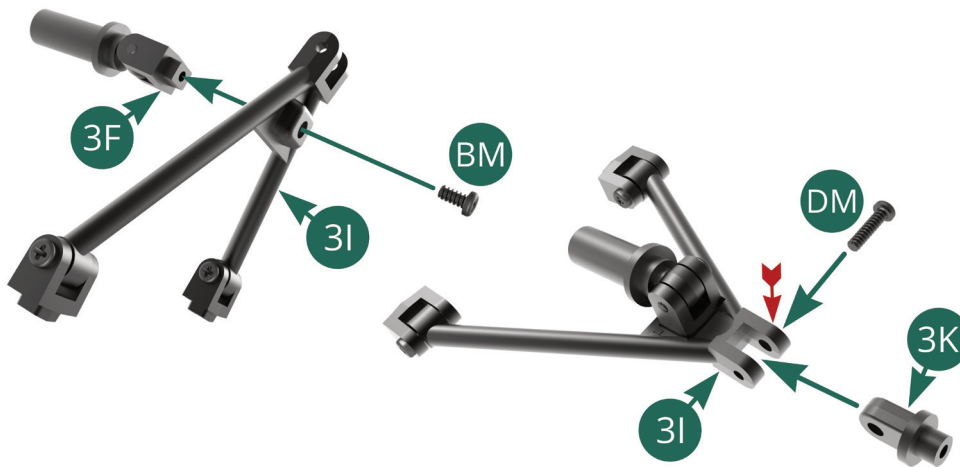


Secure the **shock absorber lower bracket (3F, marked '2')** to the **shock absorber cylinder (3E)** with a **DM** screw by passing it through the hole marked with a red arrow.



# STAGE 03: LEFT FRONT SUSPENSION AND BRAKE DISC

## STEP 3

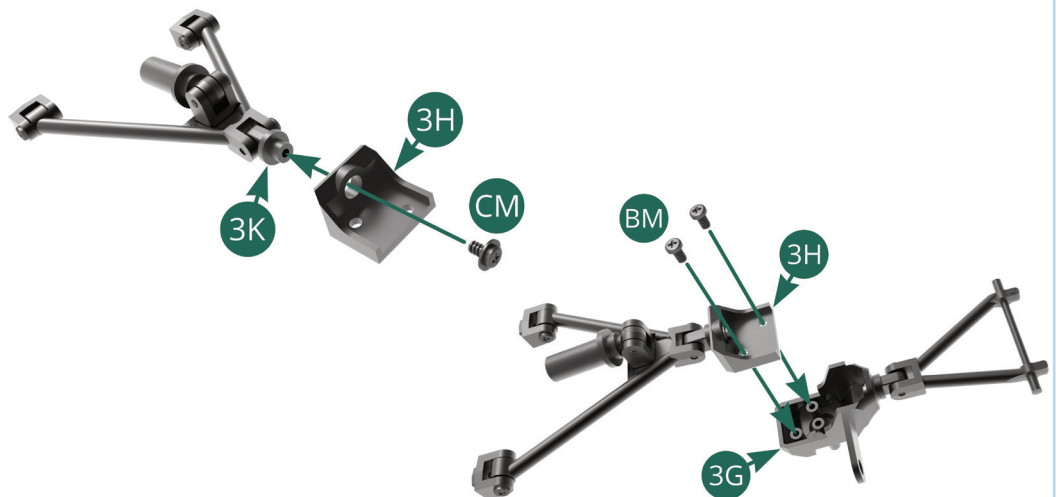


Fit the **shock absorber lower bracket (3F)** on the **lower control arm (3I)** and secure it firmly in place with a **BM** screw. Place a **hub carrier joint (3K)** onto the **lower control arm (3I)** and fix it with a **DM** screw by passing it through the hole marked with a red arrow. Don't over tighten screw **DM** as the joint must be free to move.

## STEP 4

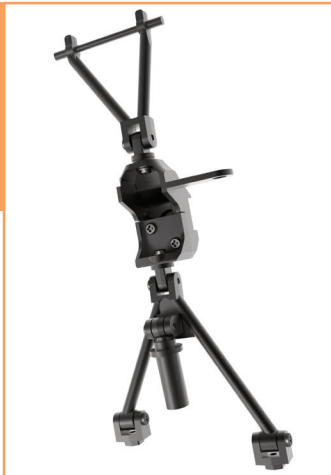
Take the **hub carrier bottom (3H)** and fit it onto the hub carrier joint (**3K**). Secure it with a **CM** screw.

Push the **hub carrier bottom (3H)** into the **hub carrier top (3G)** and secure with two **BM** screws.

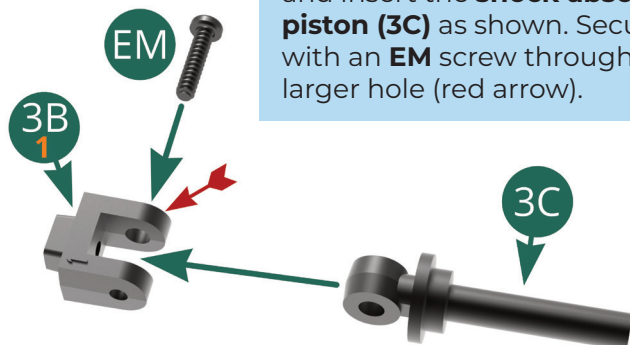


## STEP 5

*Left front suspension assembly (in unfolded position)*



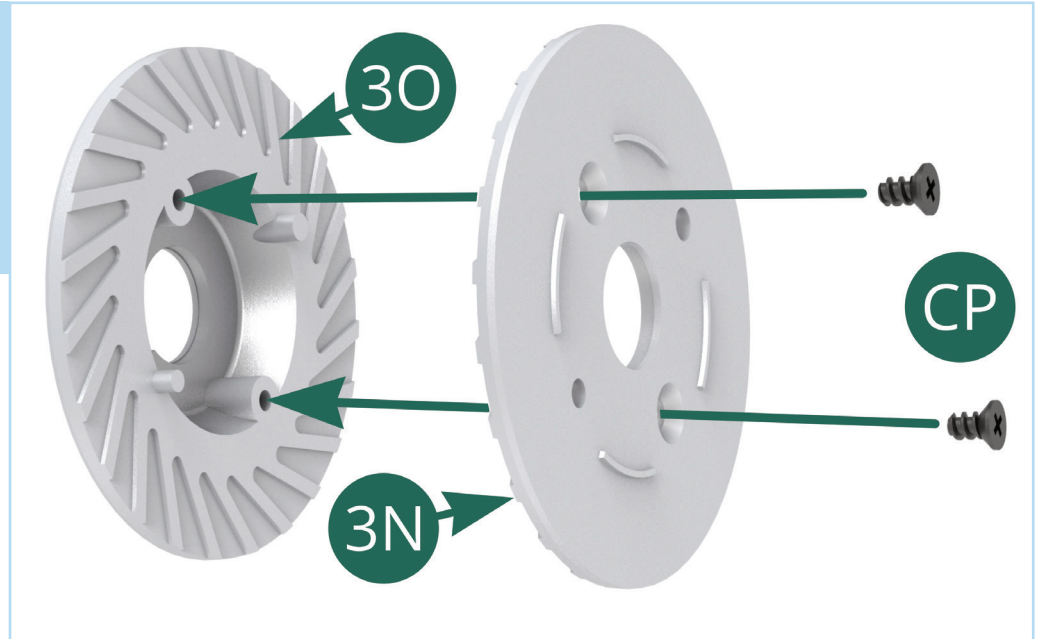
Take the **shock absorber upper bracket (3B, marked '1')** and insert the **shock absorber piston (3C)** as shown. Secure it with an **EM** screw through the larger hole (red arrow).



# STAGE 03: LEFT FRONT SUSPENSION AND BRAKE DISC

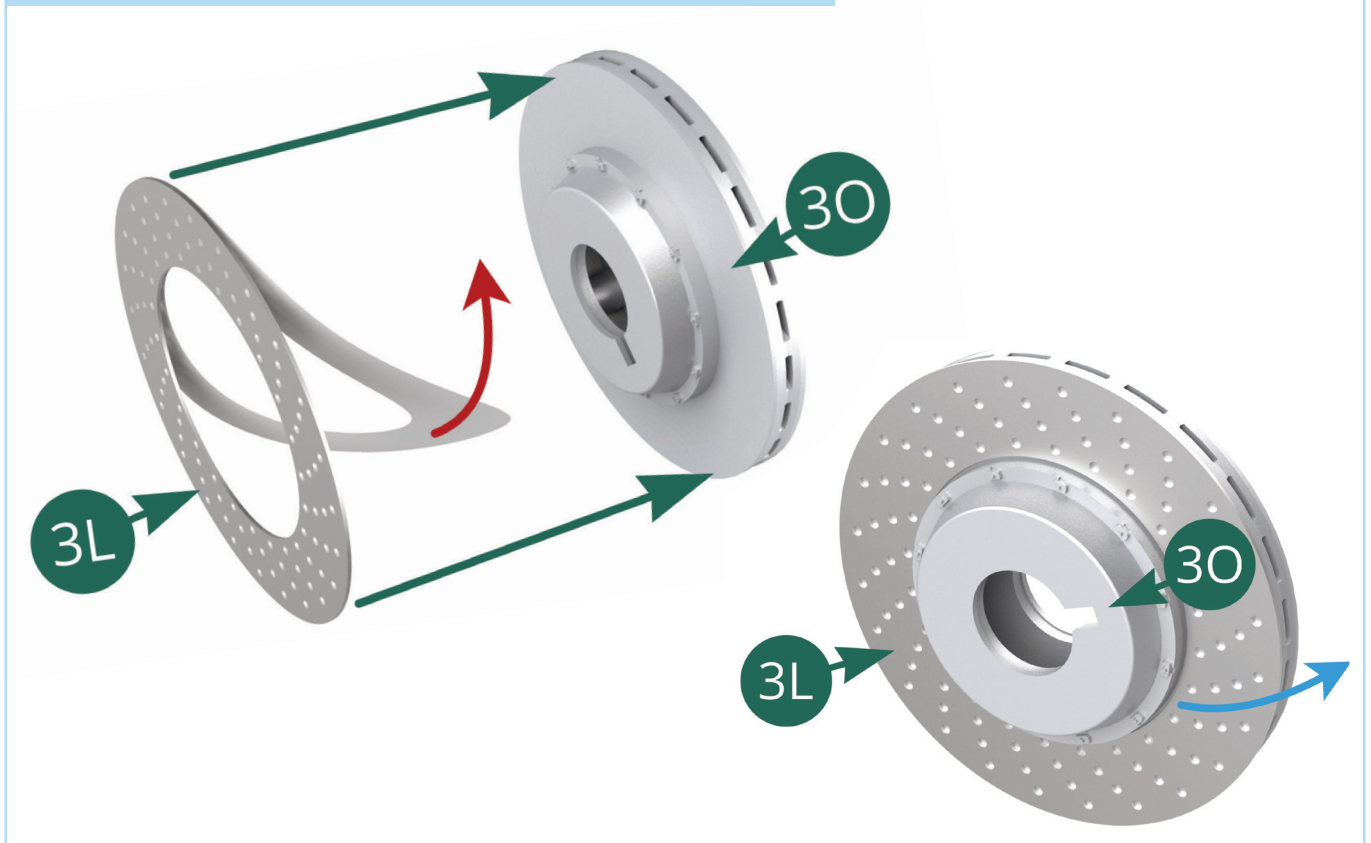
## STEP 6

Align the **inner brake disc rotor (3N)** and **outer brake disc rotor (3O)** as shown. Fit them together and secure with two **CP** screws.



## STEP 7

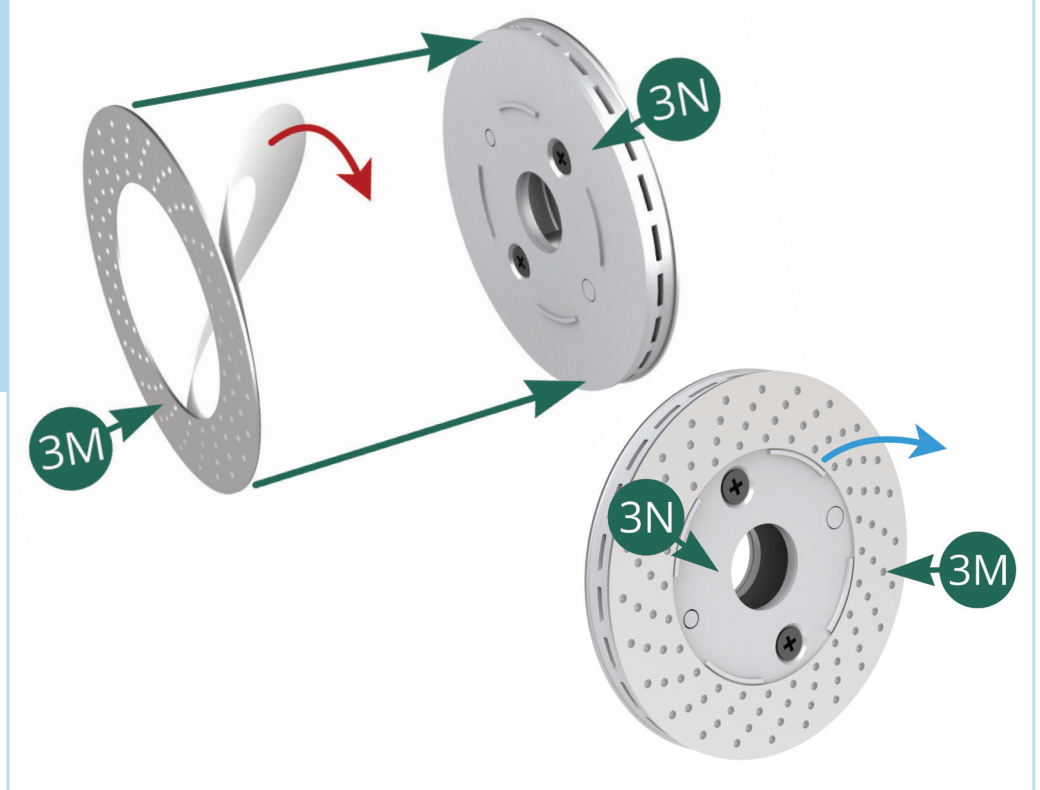
Peel the paper backing (red arrow) from the **brake disc outer surface (3L)** and stick to the **outer brake disc rotor (3O)** using the adhesive side. Take note of the direction of the ventilation holes (blue arrow).



# STAGE 03: LEFT FRONT SUSPENSION AND BRAKE DISC

## STEP 8

Peel the paper backing (red arrow) from the other **brake disc inner surface (3M)** and stick it to the **inner brake disc rotor (3N)** using the adhesive side. Take note of the direction of the ventilation holes (blue arrow).



## STAGE COMPLETE



# STAGE 04: RIGHT-SIDE OF GEARBOX AND TRANSMISSION JOINT

**4A** Right gearbox housing

**4B** Right-side mounting bracket

**4C** Transmission seal

**4D** Crosspiece

**4E** Transmission flexible joint

**4F** Flex disc (inner)

**4G** Flex disc (outer)

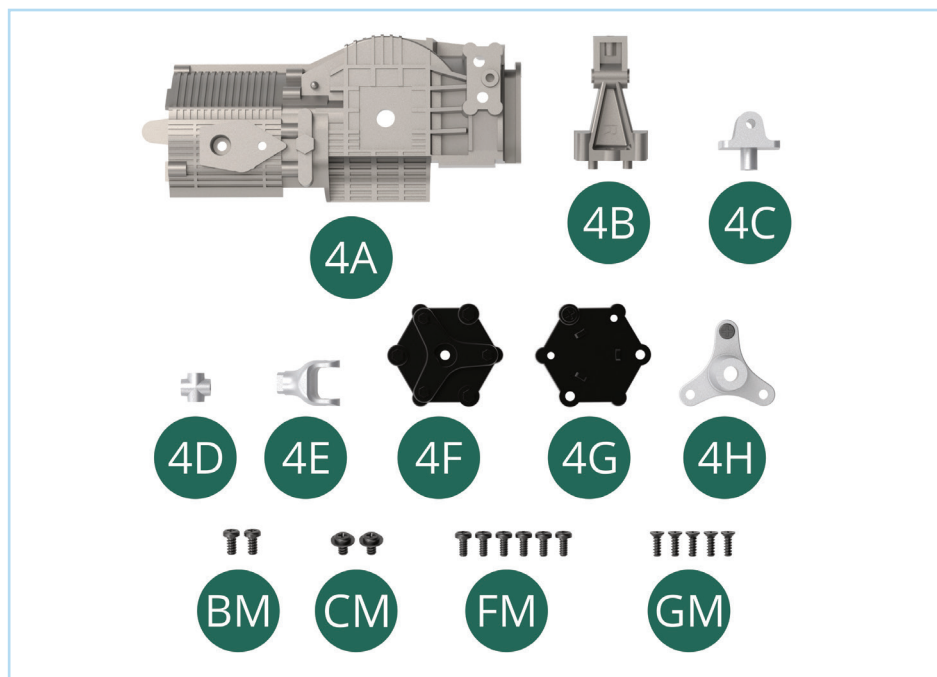
**4H** Cardan socket

**BM** Screw 2.0 x 4mm (x2)

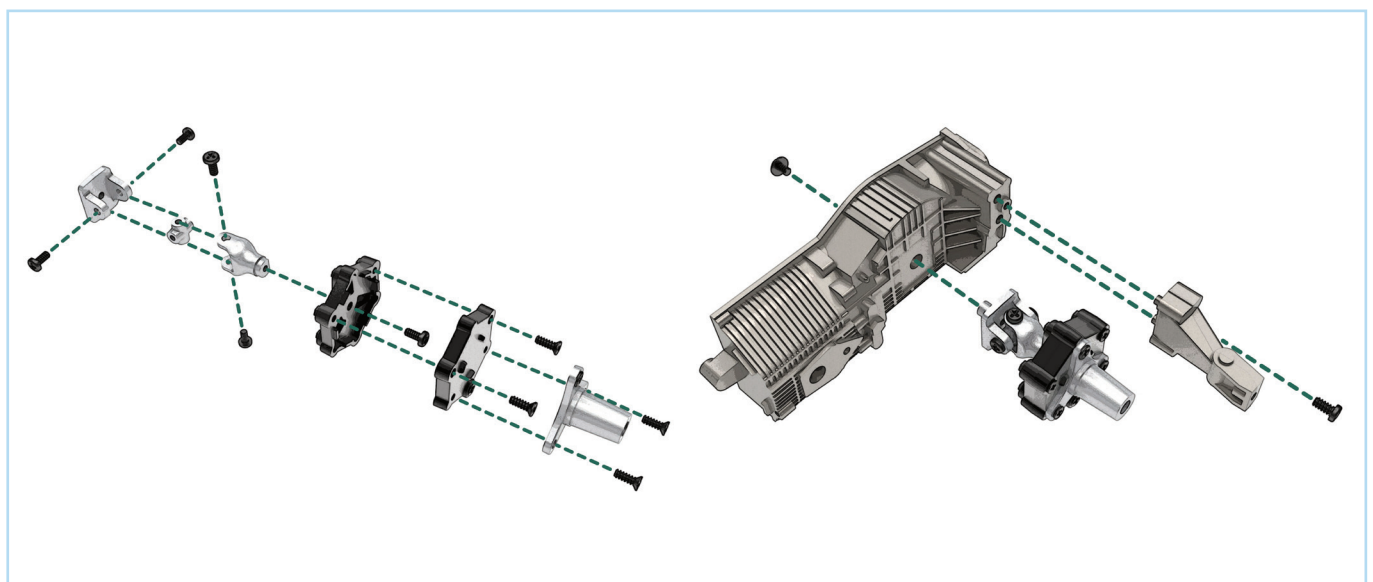
**CM** Screw 2.0 x 3 x 5mm (x2)

**FM** Screw 1.7 x 4mm (x6)

**GM** Screw 1.7 x 5mm (x5)



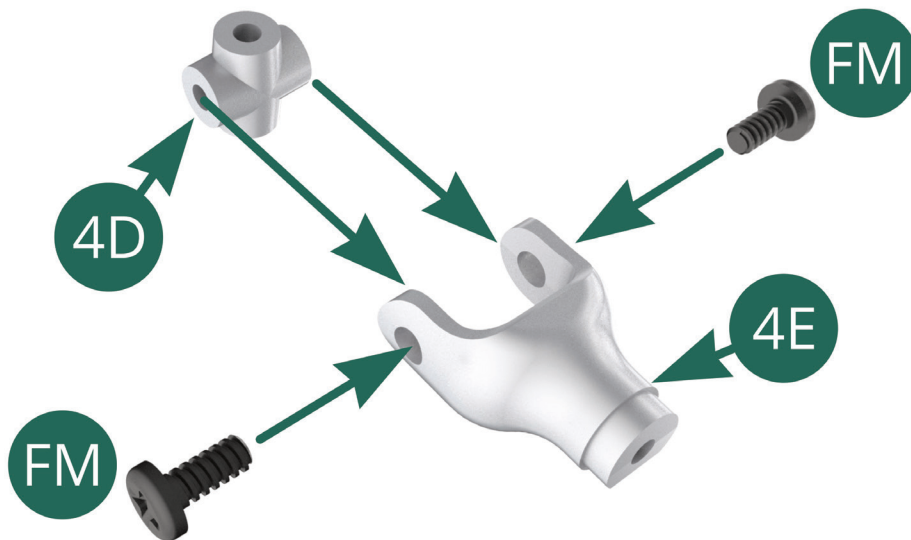
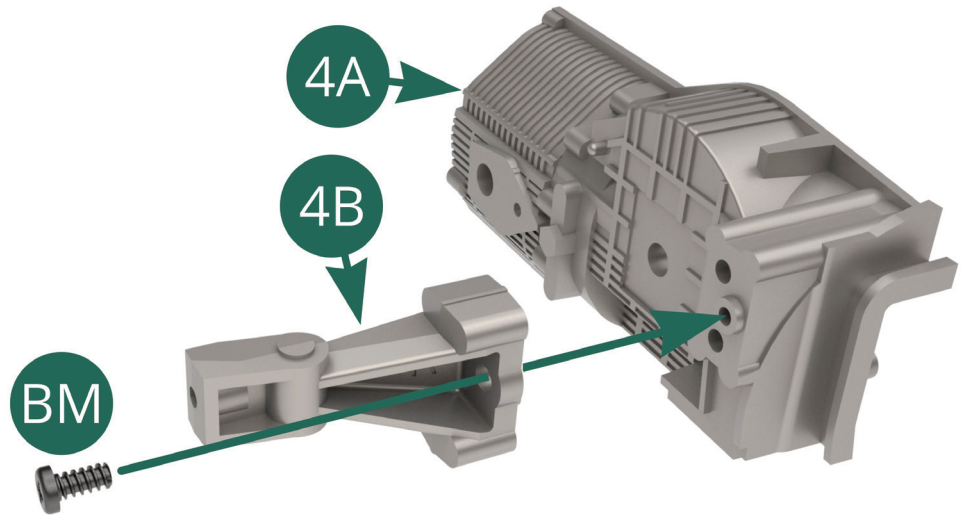
## ASSEMBLY DIAGRAM



# STAGE 04: RIGHT-SIDE OF GEARBOX AND TRANSMISSION JOINT

## STEP 1

Hold the **right-side mounting bracket (4B)** on the **right gearbox housing (4A)**. Secure firmly in place with a **BM** screw.



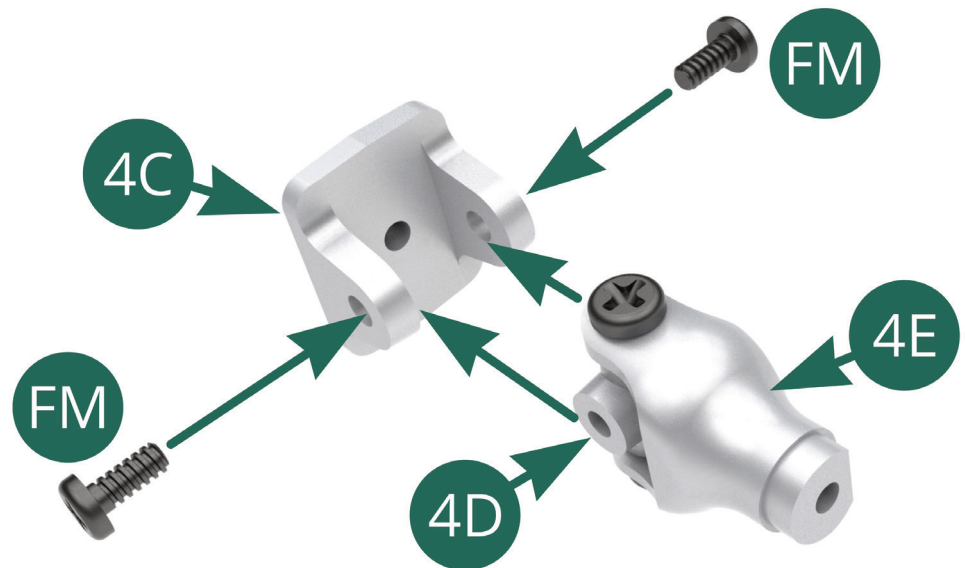
Take the **crosspiece (4D)** and fit it into the **transmission flexible joint (4E)** as shown. Secure it with two **FM** screws.

**Tip:** You may find it easier to partially tighten the screws at this step, then fully tighten after completing Step 2.

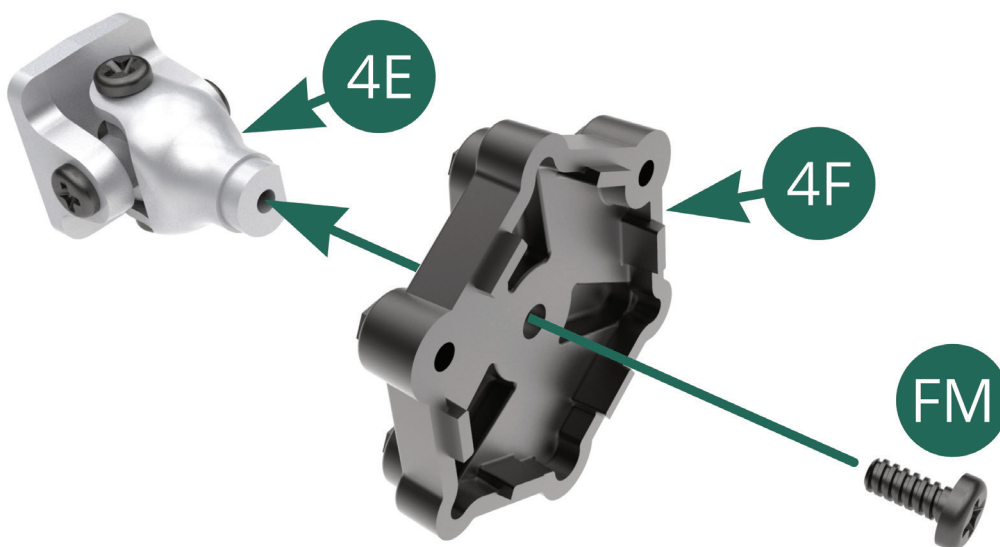
# STAGE 04: RIGHT-SIDE OF GEARBOX AND TRANSMISSION JOINT

## STEP 2

Align the **transmission seal (4C)** with the **crosspiece (4D)** and secure it with two **FM** screws. Don't over tighten the **FM** screws as the joint should be free to move.



Fit the **inner flex disc (4F)** onto the **transmission flexible joint (4E)** as shown and secure it in place with an **FM** screw.



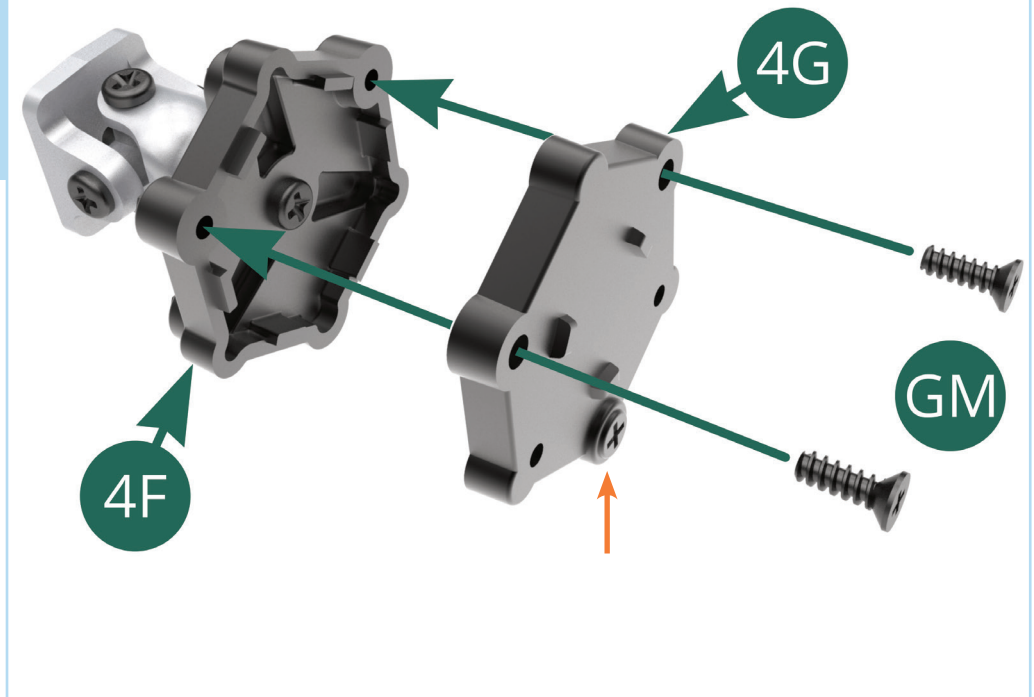
You can lubricate the thread of the **FM** screw with a drop of oil if it is difficult to screw in.

# STAGE 04: RIGHT-SIDE OF GEARBOX AND TRANSMISSION JOINT

## STEP 3

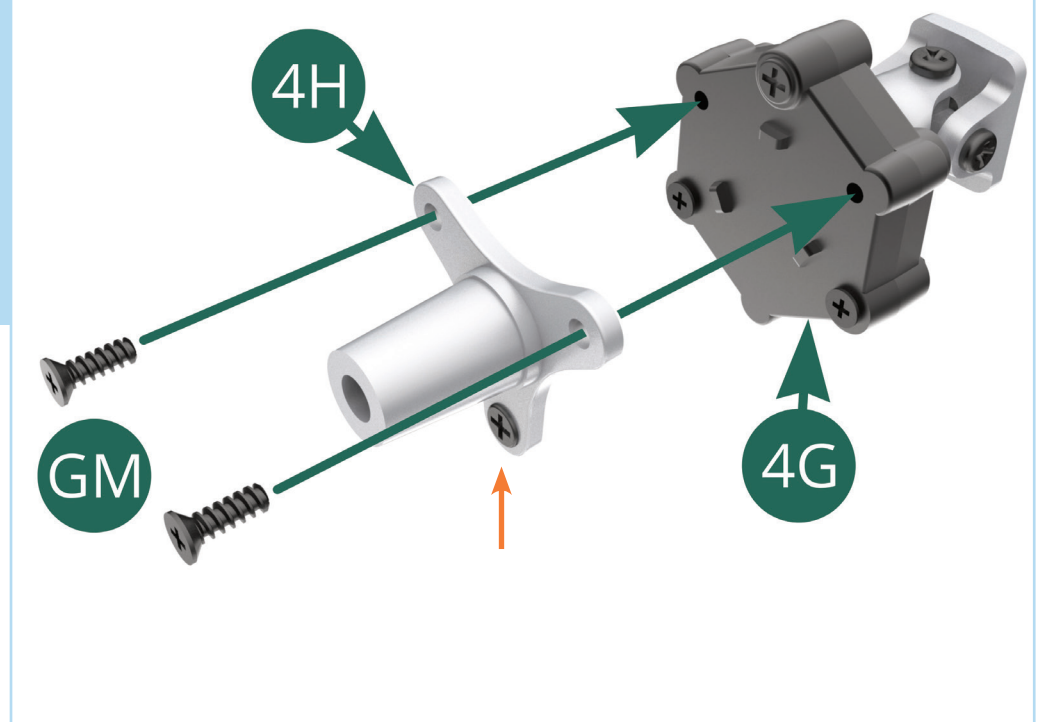
Fit the **outer flex disc (4G)** onto the **inner flex disc (4F)** and secure it in place with two **GM** screws.

Note the false 'screw' (orange arrow) on the outer disc.



Take the **cardan socket (4H)** and align it with the **outer flex disc (4G)** as shown. Note the false 'screw' (orange arrow) on the socket is opposite the previous false 'screw'.

Hold the socket in place and secure it with two **GM** screws.

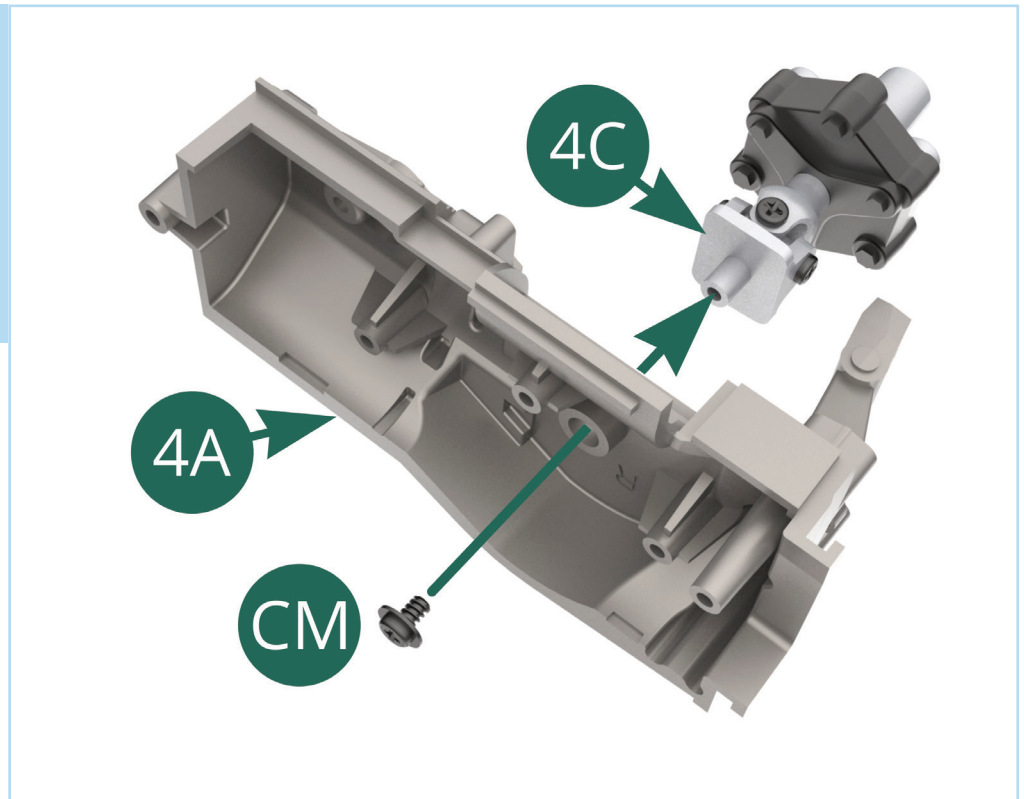




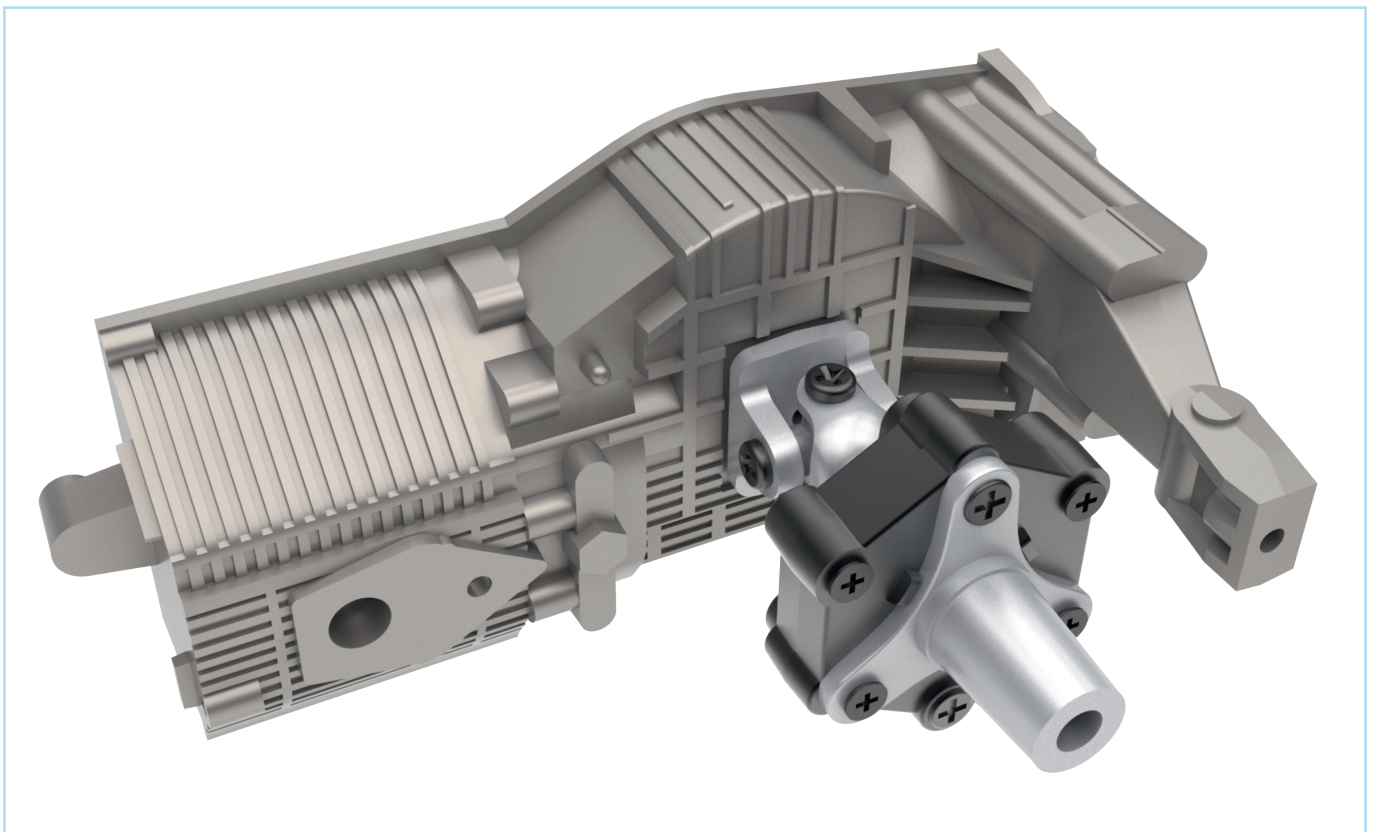
# STAGE 04: RIGHT-SIDE OF GEARBOX AND TRANSMISSION JOINT

## STEP 4

Take the assembly and fit it onto the **right gearbox housing (4A)**. Secure it in place with a **CM** screw. Do not over tighten the **CM** screw as this drive shaft should be free to rotate.



## STAGE COMPLETE



# STAGE 05: UNDERSIDE OF GEARBOX AND STARTING SYSTEM

**5A** Gearbox underside

**5B** Internal support

**5C** Gearbox support lever

**5D** Support bracket

**5E** Stabilizing rod

**5F** Gearbox rear cover

**5G** Rear crankcase cover

**5H** Gearbox rear pump

**5I** Exhaust pipe bracket

**5J** Starter solenoid

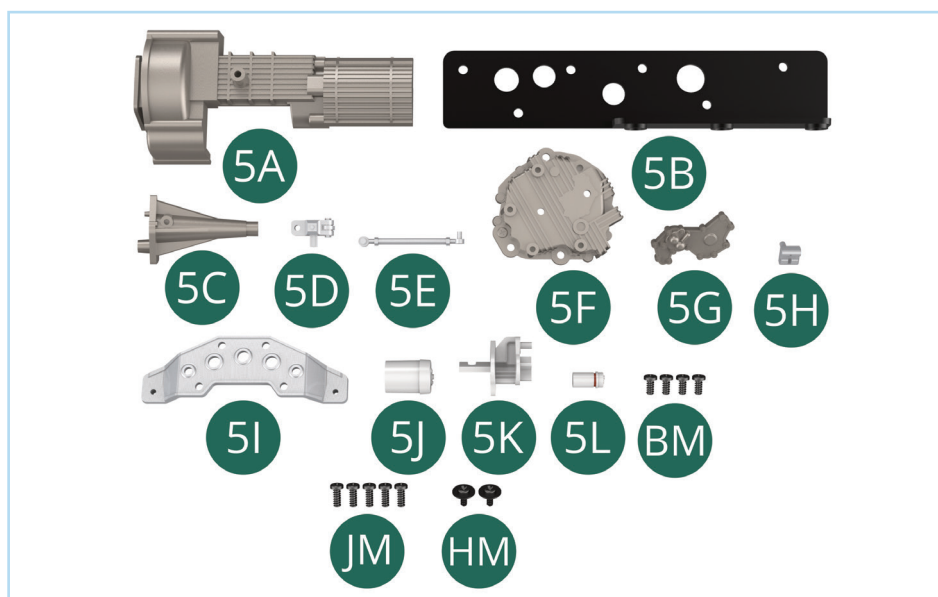
**5K** Starter housing

**5L** Starter coil

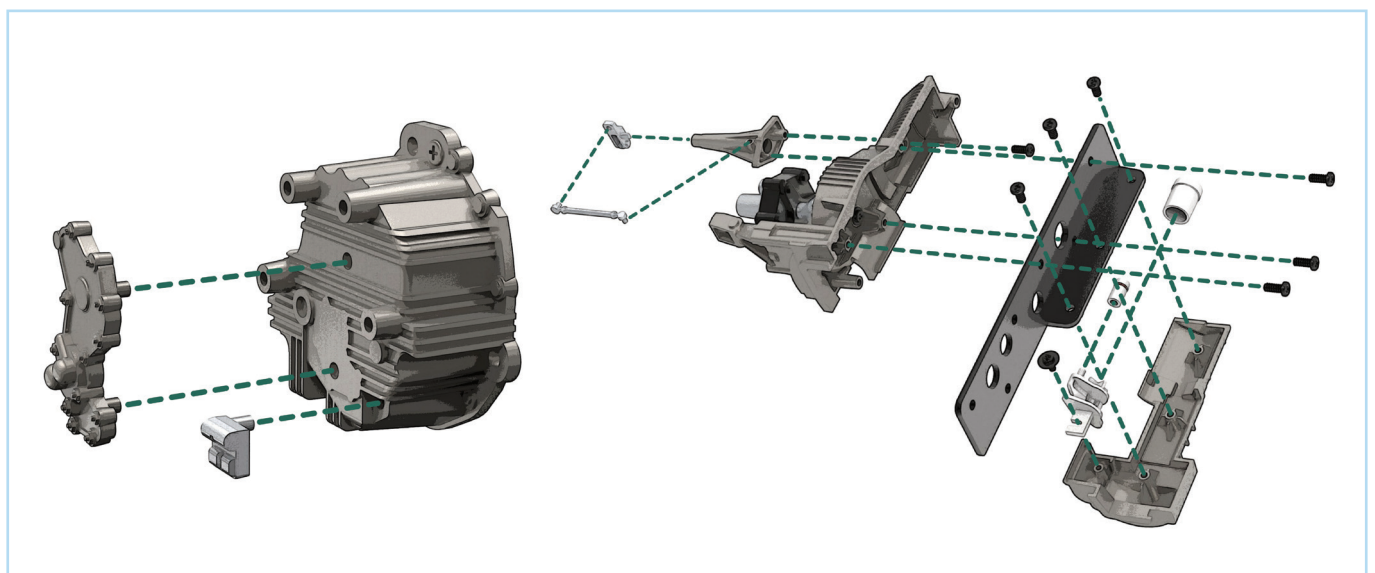
**BM** Screw 2.0 x 4mm (x4)

**JM** Screw 2.0 x 5mm (x5)

**HM** Screw 1.7 x 4 x 6mm (x2)

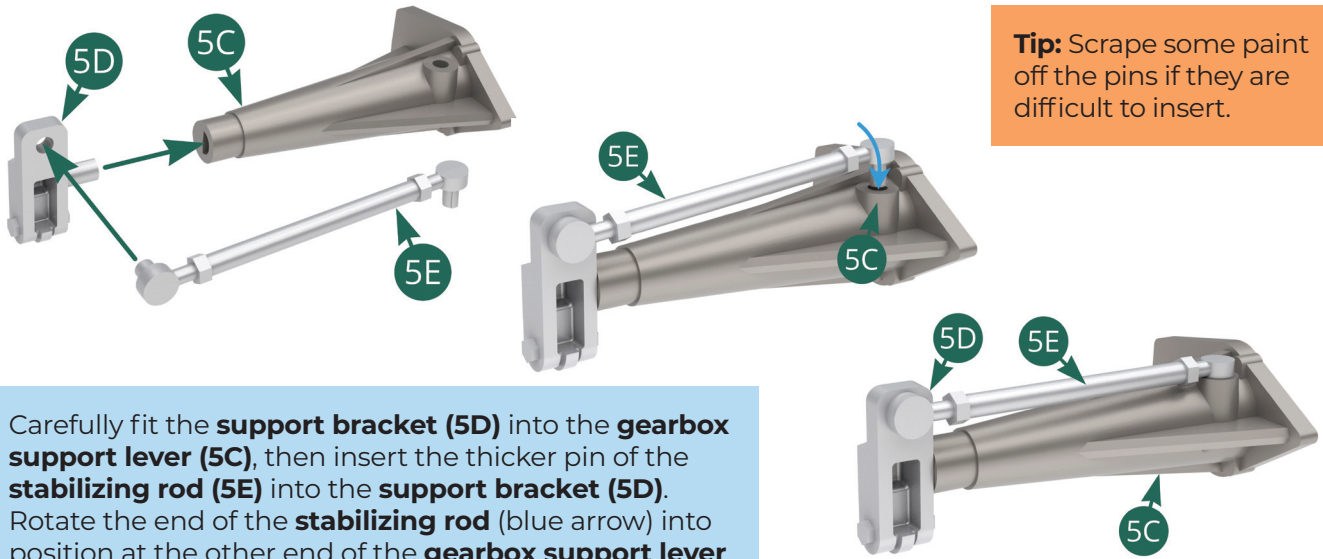


## ASSEMBLY DIAGRAM



# STAGE 05: UNDERSIDE OF GEARBOX AND STARTING SYSTEM

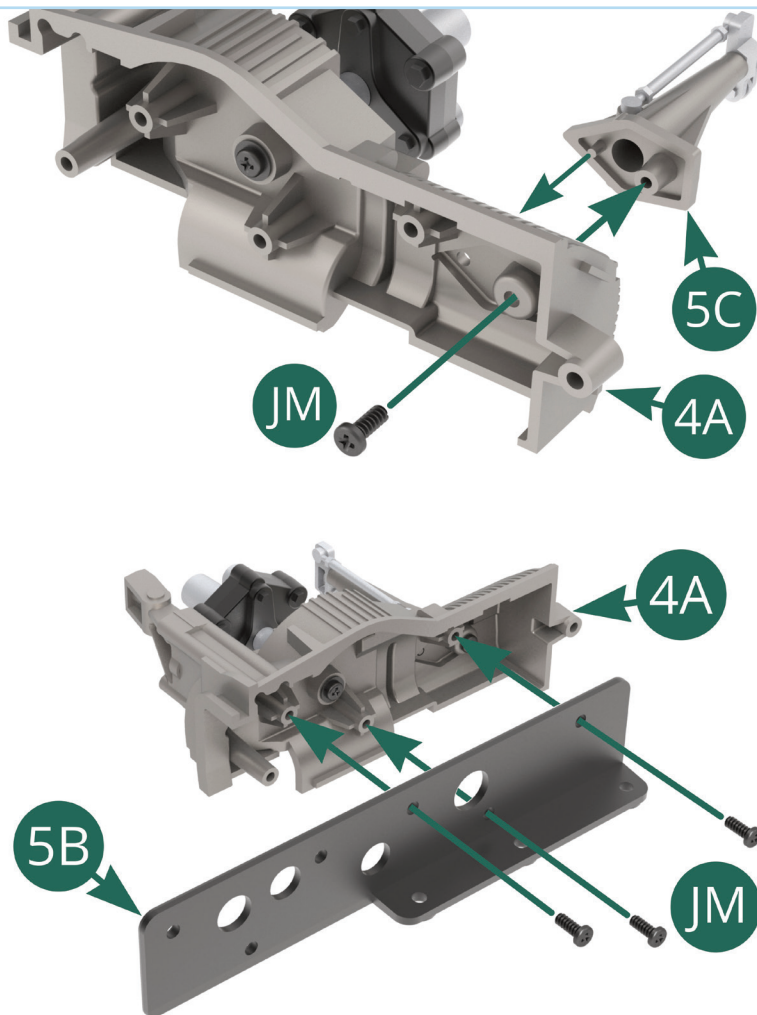
## STEP 1



**Tip:** Scrape some paint off the pins if they are difficult to insert.

Carefully fit the **support bracket (5D)** into the **gearbox support lever (5C)**, then insert the thicker pin of the **stabilizing rod (5E)** into the **support bracket (5D)**. Rotate the end of the **stabilizing rod** (blue arrow) into position at the other end of the **gearbox support lever**.

## STEP 2



Take the **right gearbox housing (4A)** assembled in Stage 04.

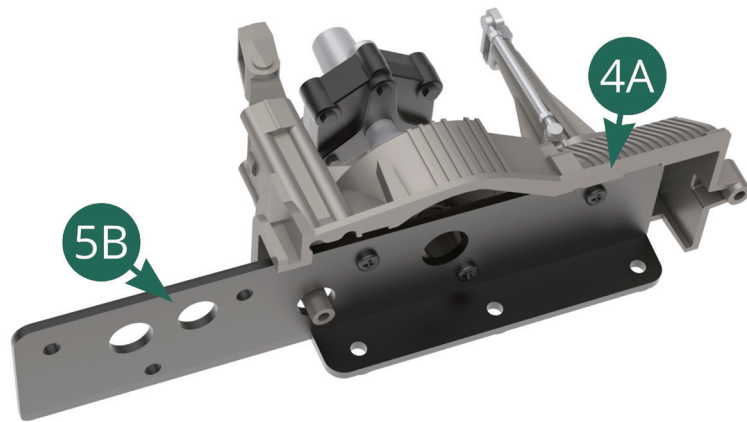
Fit the **gearbox support lever (5C)** onto the **right gearbox housing** and secure it with a **JM** screw.

Position the **internal support (5B)** on the inside of the **right gearbox housing** as shown. Secure it in place with three **JM** screws.

# STAGE 05: UNDERSIDE OF GEARBOX AND STARTING SYSTEM

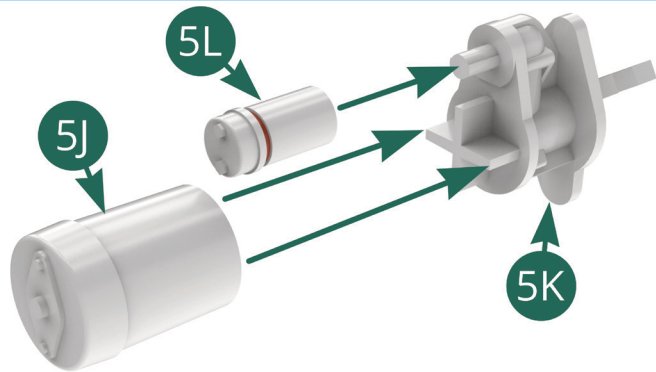
## STEP 3

This image shows the internal support positioned inside the right gearbox housing.



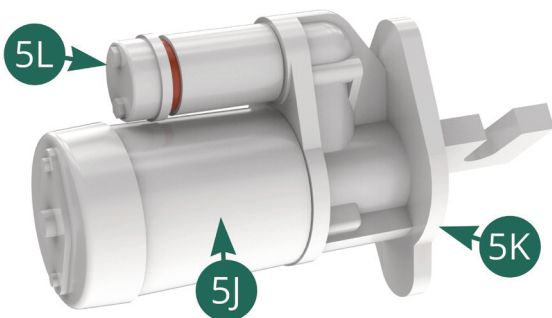
Push the **starter coil (5L)** and the **starter solenoid (5J)** onto the **starter housing (5K)**.

**Note:** look carefully at the alignment of the ends of the coil and solenoid in the picture opposite.

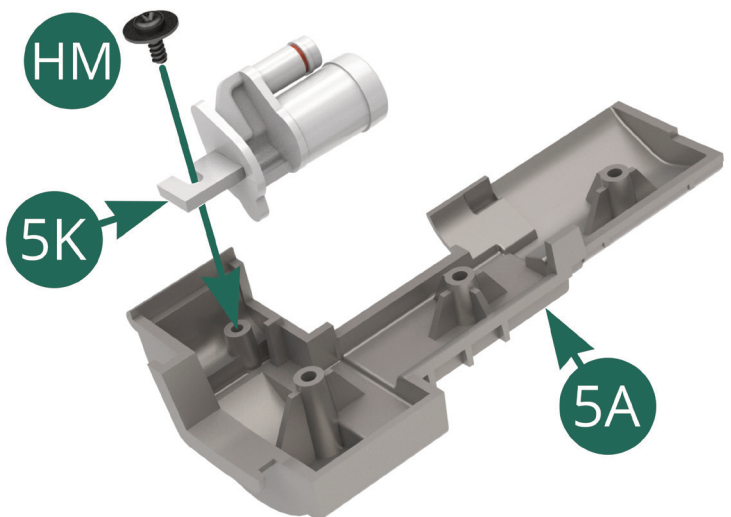


## STEP 4

The assembled starter system should look like this.



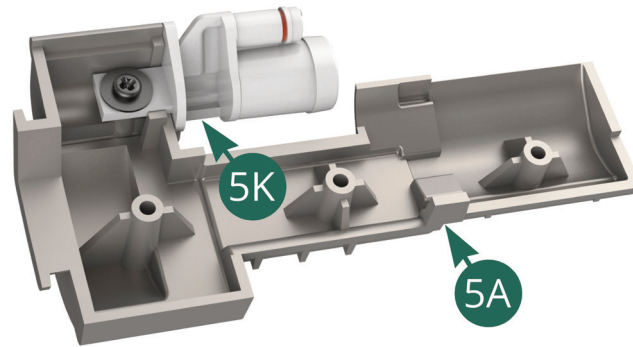
Place the **starter system assembly** on the **gearbox underside (5A)**. Secure in place with an **HM screw** through the notch in the **starter housing (5K)**.



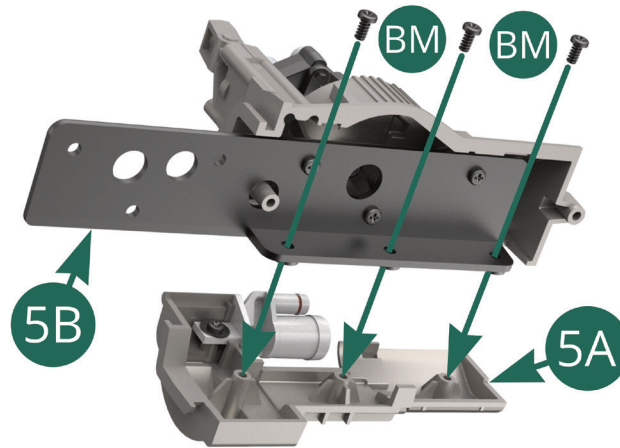
# STAGE 05: UNDERSIDE OF GEARBOX AND STARTING SYSTEM

## STEP 5

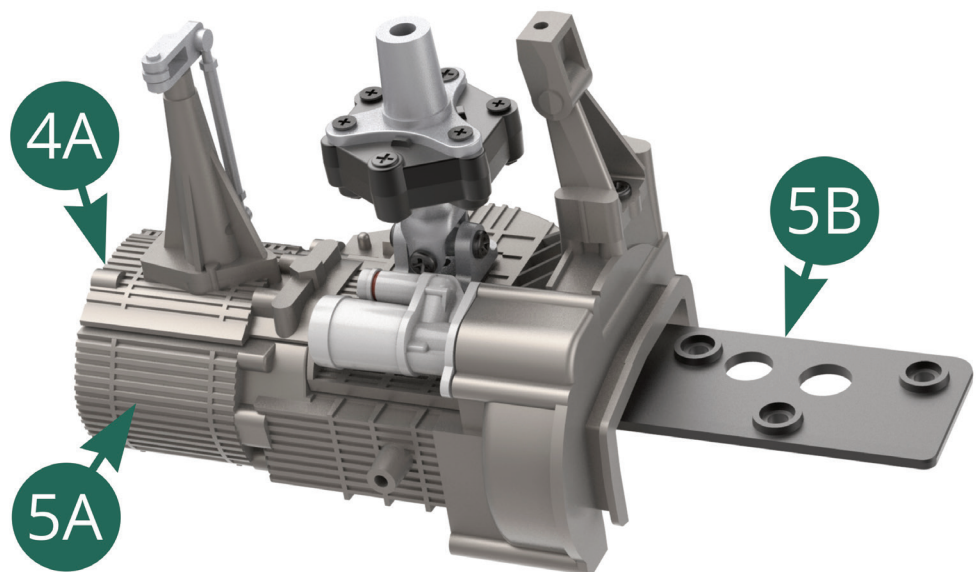
The starter system should look like this when installed on the gearbox underside.



Align the **gearbox underside (5A)** with the **internal support (5B)** as shown and secure it with three **BM** screws.



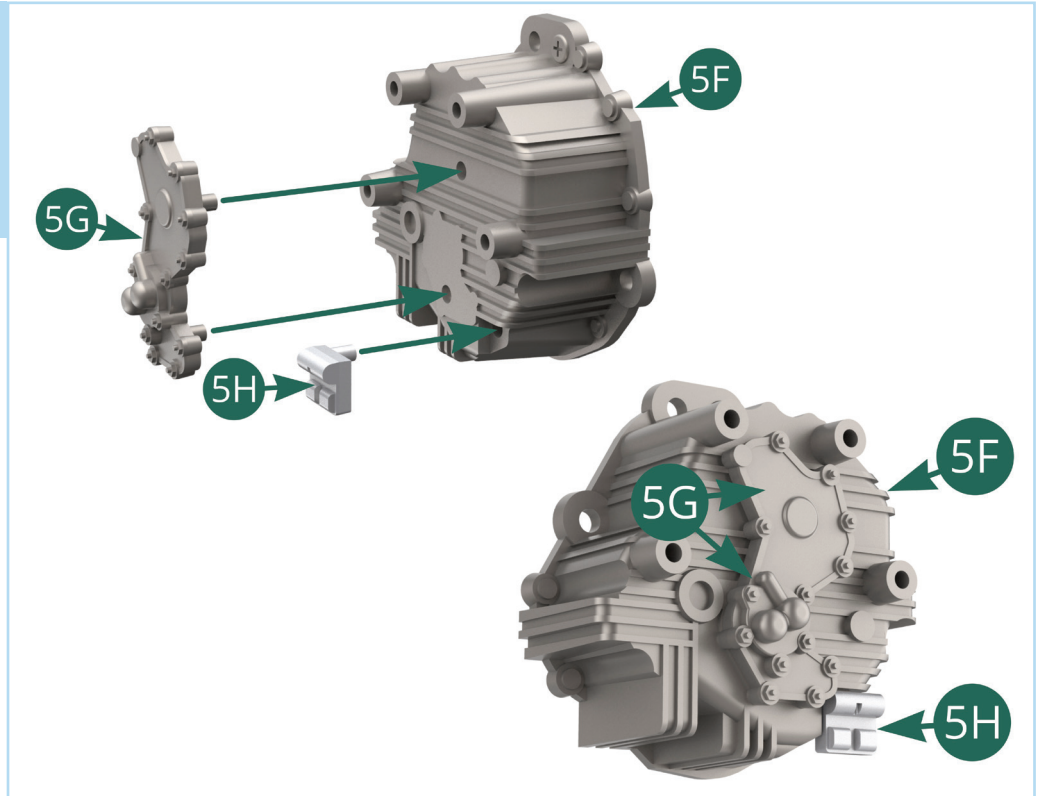
The right gearbox housing and gearbox underside should now look like this.



# STAGE 05: UNDERSIDE OF GEARBOX AND STARTING SYSTEM

## STEP 6

Press the **rear crankcase cover (5G)** and **gearbox rear pump (5H)** into place on the **gearbox rear cover (5F)**.



## STAGE COMPLETE

