

1 9 6 5

# SHELBY COBRA

## 427 SEMI-COMPETITION

**1:8 SCALE**



### **Pack 06 | Build Instructions**

In the 1960s, Carroll Shelby's Cobras dominated racetracks worldwide, first winning races coast to coast across North America, then in 1965, winning the World Manufacturer's GT Championship, achieving the ultimate goal of defeating Ferrari. The Semi-Competitions were modified from full competition models just enough to make them street legal. Only 29 models were produced, making them one of the most sought-after American sports cars by collectors.

Your 1:8 model replicates the original 1965 Semi-Competition Cobra in intricate detail. From the detail on the dashboard dials to the writing on the wheels, every piece is precisely reproduced.

**In your sixth model pack, you will assemble:**

**STAGE 41: DASHBORD SWITCHES AND STEERING ROD GUIDE**

**STAGE 42: DASHBOARD DIALS AND SWITCH**

**STAGE 43: CENTER CONSOLE AND LEFT FLOOR SECTION**

**STAGE 44: RIGHT FLOOR SECTION AND FLOOR MATS**

**STAGE 45: COCKPIT REAR WALL**

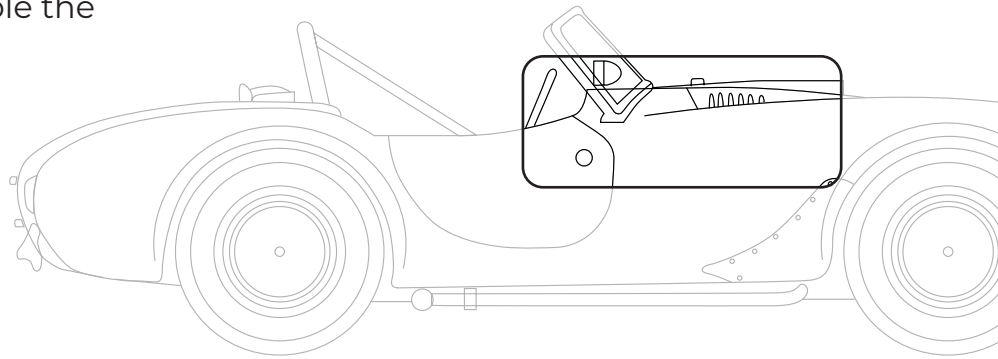
**STAGE 46: GEAR LEVER, HANDBRAKE AND U-BAR**

**STAGE 47: ACCELERATOR PEDAL & SWITCH, BRAKE PEDAL & SWITCH, CLUTCH PEDAL, FLOOR PLATE**

**STAGE 48: MOUNTING BOX AND MAIN SWITCH**

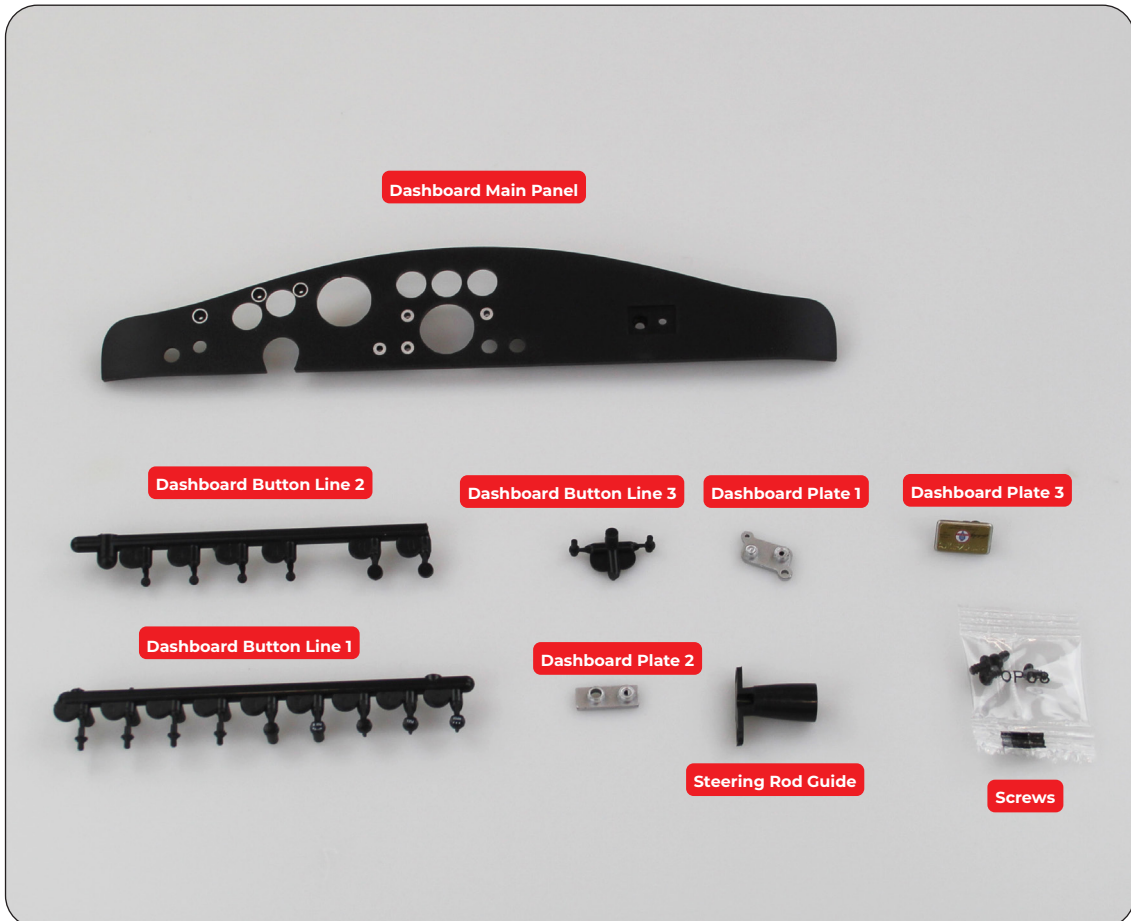
# Stage 41: Dashboard Switches and Steering Rod Guide

In this first stage of building the Shelby Cobra, you will assemble the dashboard.



## STAGE 41 PARTS LIST

Name	Quantity
Dashboard Main Panel	1
Dashboard Button Line 1	1
Dashboard Button Line 2	1
Dashboard Button Line 3	1
Dashboard Plate 1	1
Dashboard Plate 2	1
Dashboard Plate 3	1
Steering Rod Guide	1
Screw TYPE OP08	4

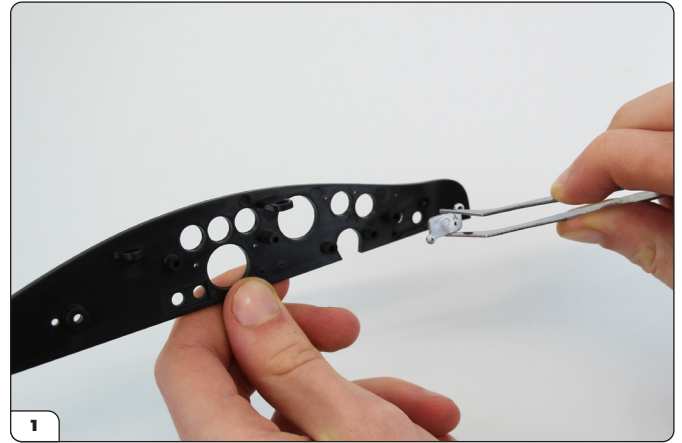


# Stage 41: Dashboard Switches and Steering Rod Guide

## STEP 1

### ATTACH THE DASHBOARD PLATES AND STEERING ROD GUIDE

With the reverse side of the Dashboard Main Panel facing you, place the Dashboard Plate 1 and the Dashboard Plate 2 into position on their corresponding lugs. These are a push fit and do not screw on. Both plates will only fit one way round.

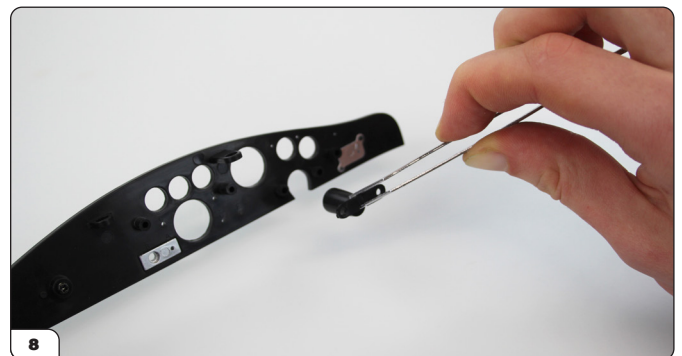
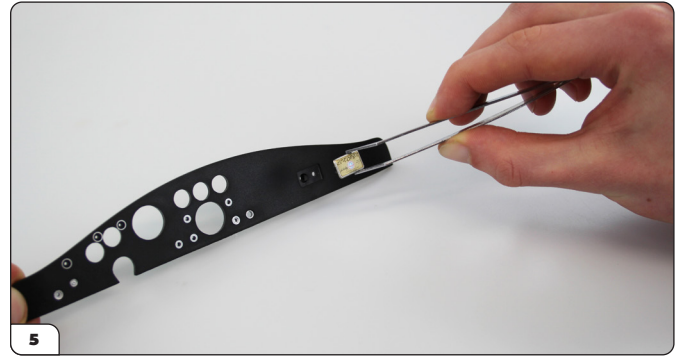


# Stage 41: Dashboard Switches and Steering Rod Guide

## CONTINUED...

Turn the Main Panel over so the front side is facing you and place the Dashboard Plate 3 into position. Fix from the reverse side using a TYPE OP08 screw.

Still on the reverse side, place the Steering Rod Guide into position and fix in place with 2 x TYPE OP08 screws. The Steering Rod will only fit one way round.

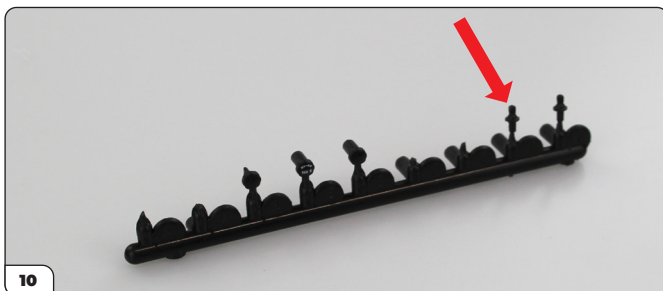
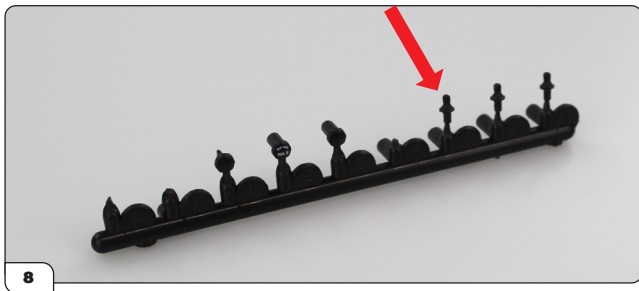
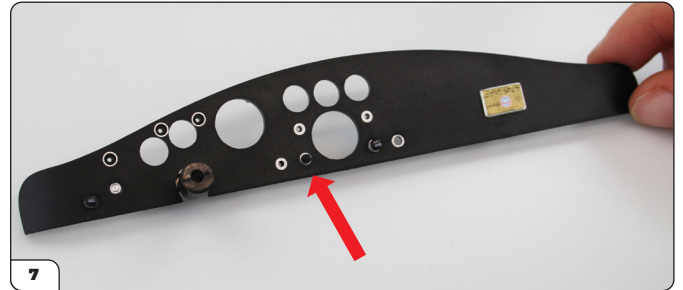
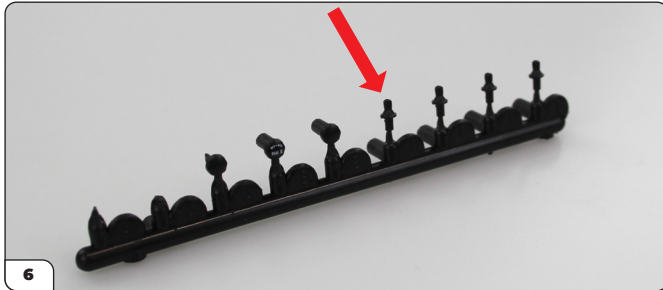
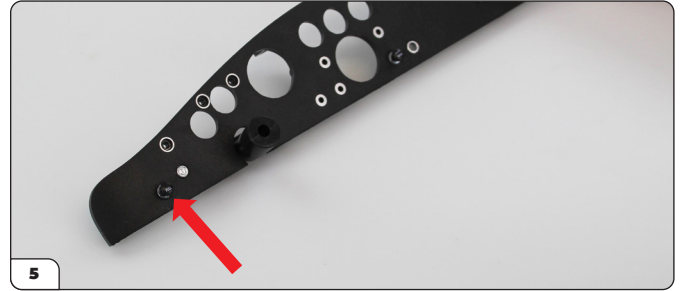
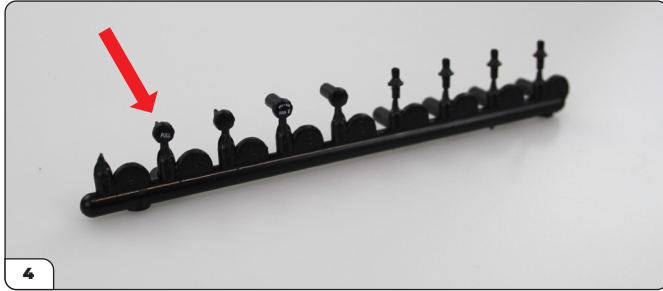
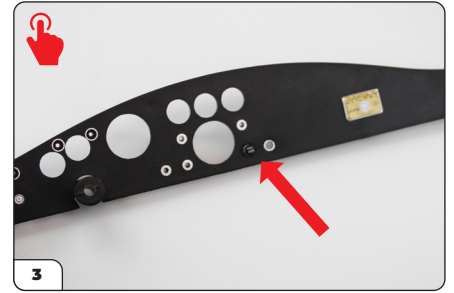
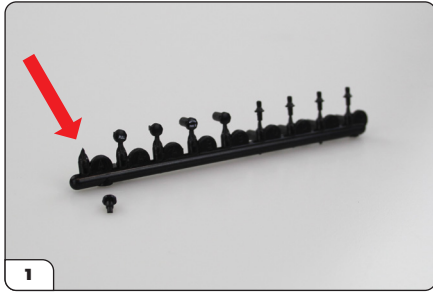


# Stage 41: Dashboard Switches and Steering Rod Guide

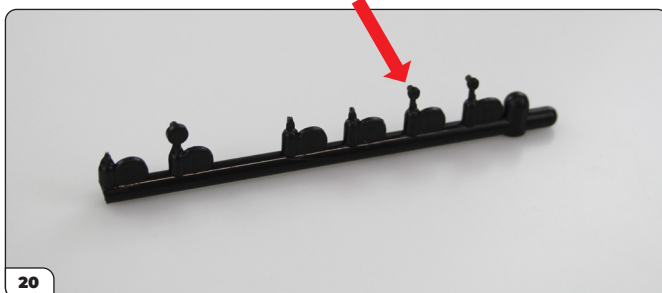
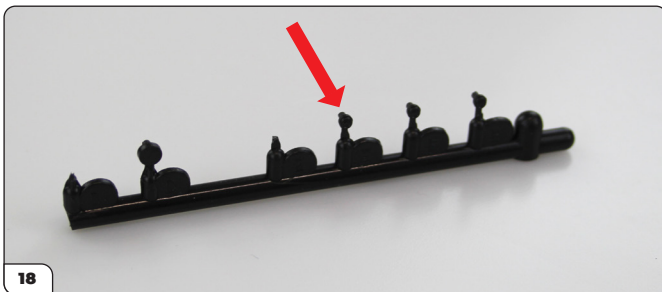
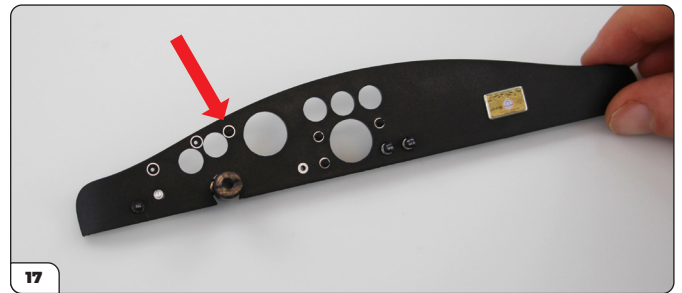
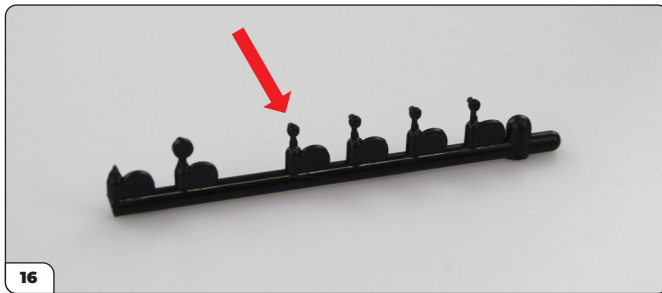
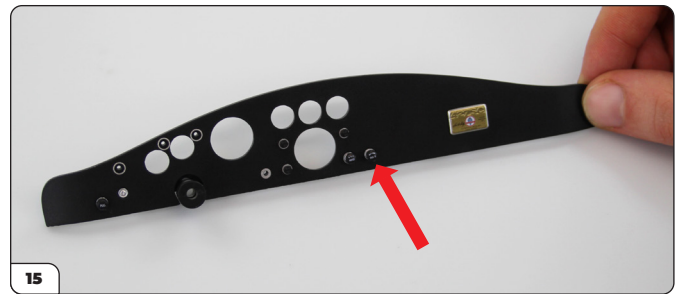
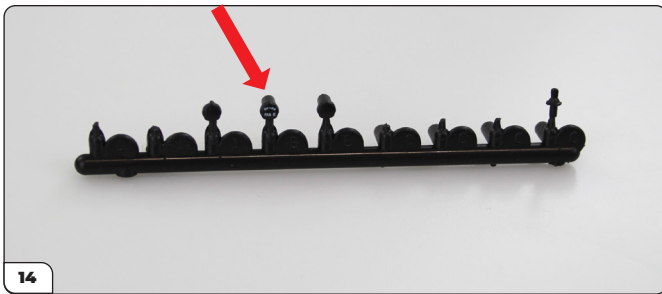
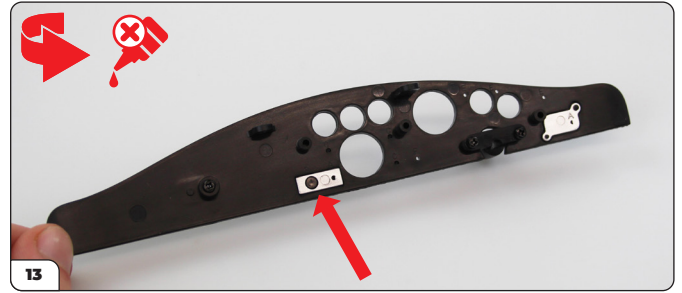
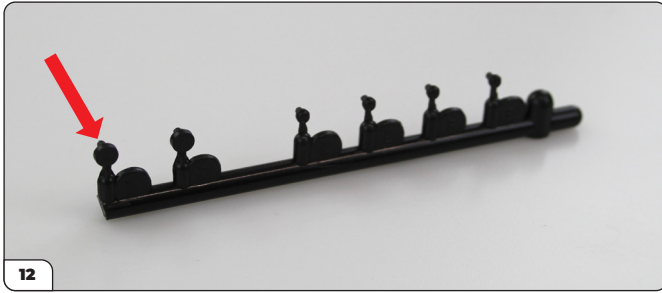
## STEP 2

### ATTACH THE DASHBOARD SWITCHES

Take the Dashboard Button Line 1 and remove the button shown. Push into position on the Main Panel as shown in picture 3. Repeat this process, removing buttons from the two lines and positioning them where shown. Some of the buttons have a D-shaped peg to ensure they are aligned properly. Note: some spare buttons have been supplied.

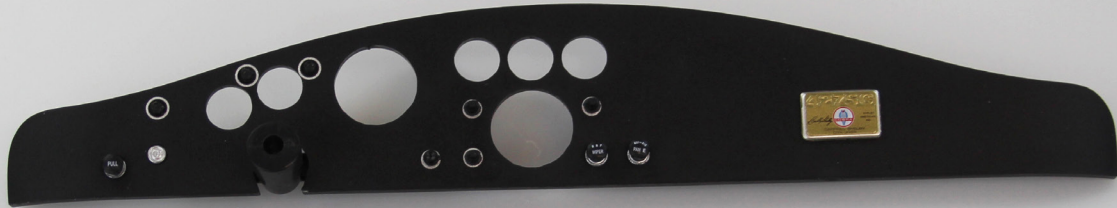


# Stage 41: Dashboard Switches and Steering Rod Guide



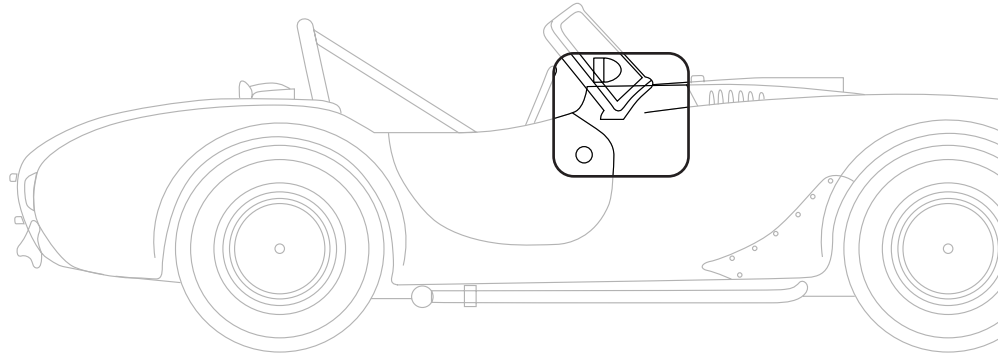
## Stage 41: Dashboard Switches and Steering Rod Guide

**Stage 41 complete!**



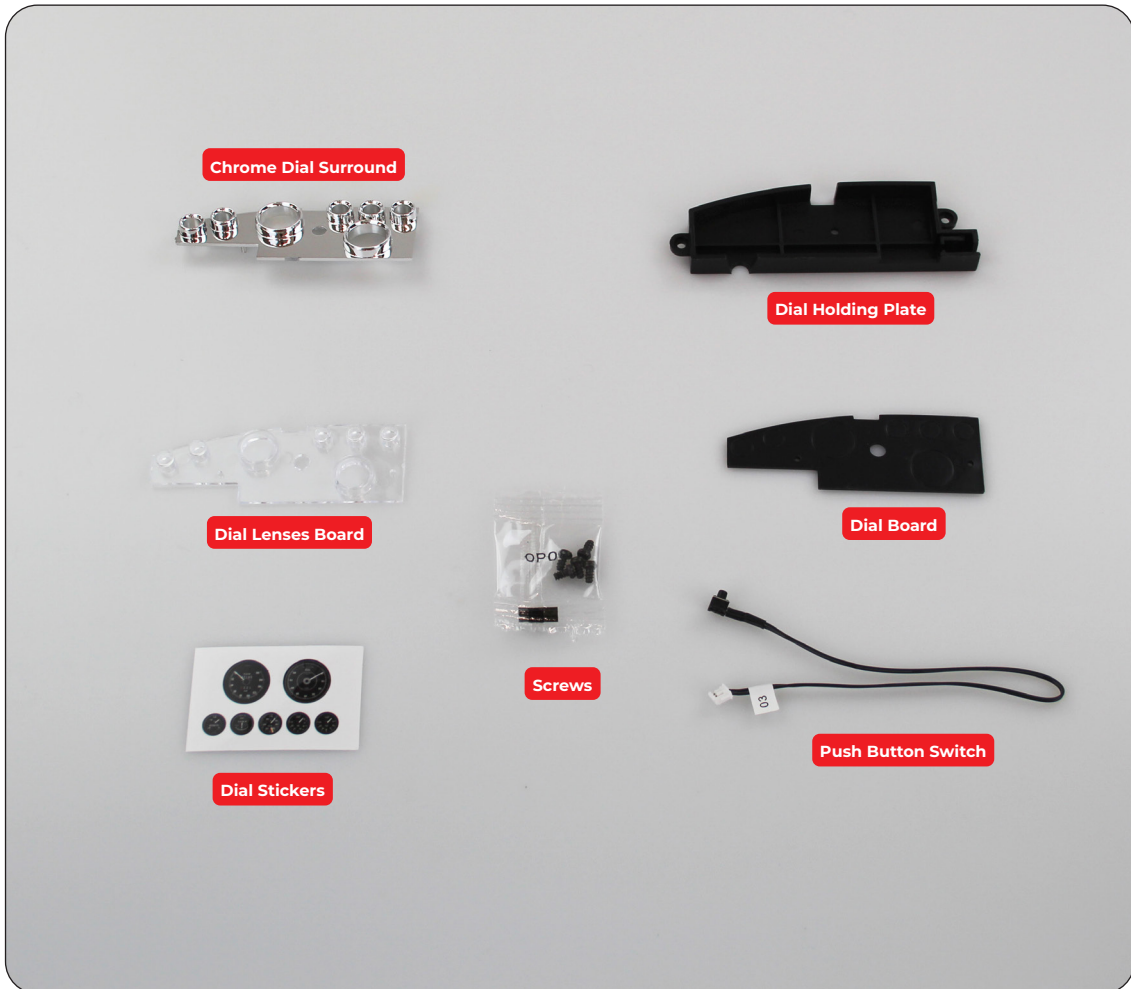
## Stage 42: Dashbord Dials and Switch

In stage 42, you will assemble the dashboard dials.



### STAGE 42 PARTS LIST

Name	Quantity
Dial Board	1
Push Button Switch	1
Chrome Dial Surround	1
Dial Lenses Board	1
Dial Holding Plate	1
Dial Stickers	1
Screws TYPE OP08	4





# Stage 42: Dashboard Dials and Switch

## STEP 1

### ASSEMBLE THE DASHBOARD DIALS

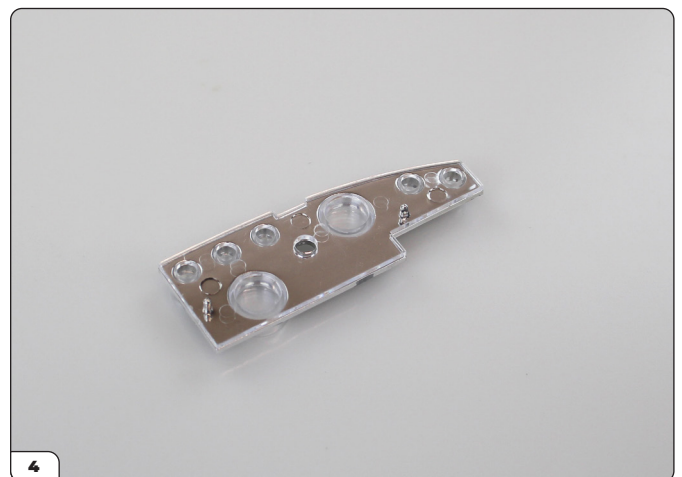
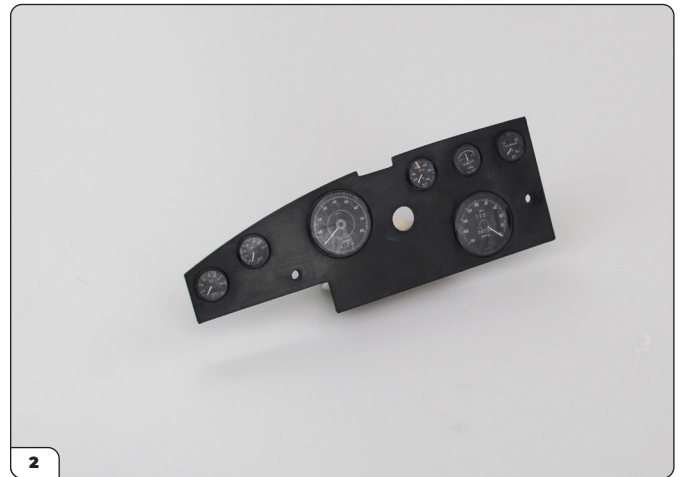
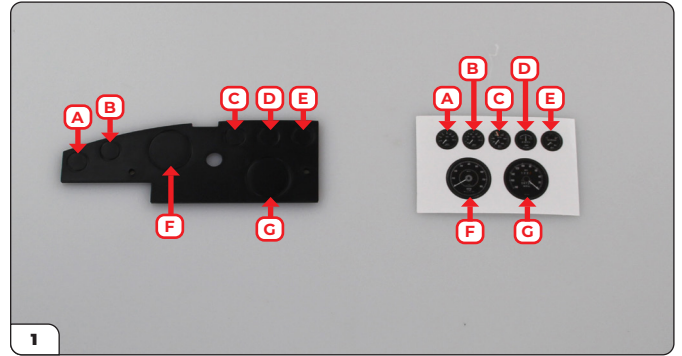
Peel the dashboard Dial Stickers from the sticker sheet and position them on the Dial Board in the positions shown.

Mount the Lenses Board onto the Chrome surround, pushing them together.



### ADVICE FROM THE EXPERTS

Use a pair of tweezers to apply the stickers accurately.



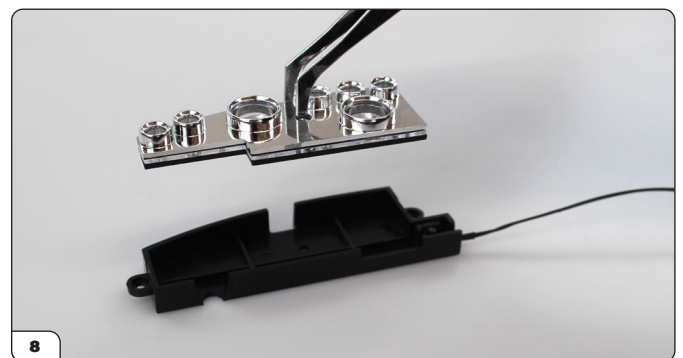
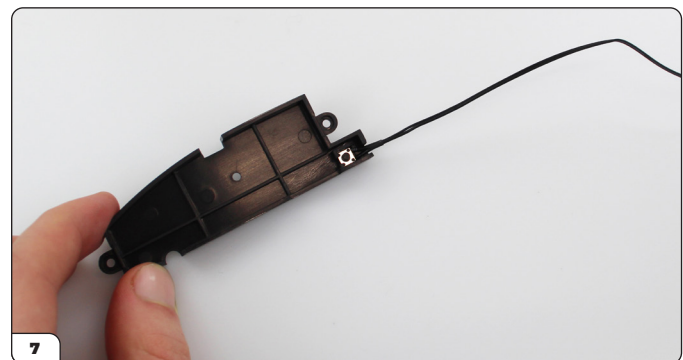
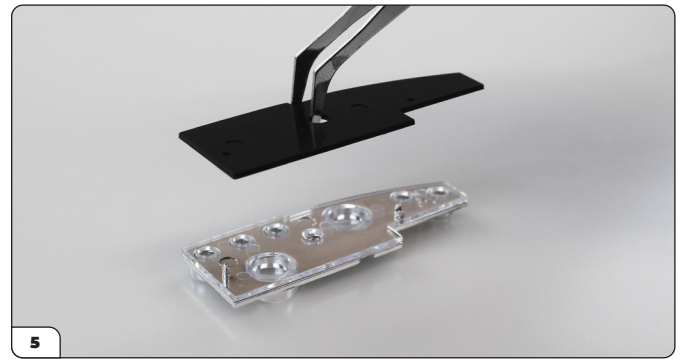
## Stage 42: Dashboard Dials and Switch

### CONTINUED...

Then sandwich the lenses in place by placing the Dial Board on top, squeezing them together to fix.

Next, take the Dial Holding Plate (picture 7) and position the Switch with cable 03 as shown.

Lower the Dial Lenses/Board assembly onto the Holding Plate and squeeze together.



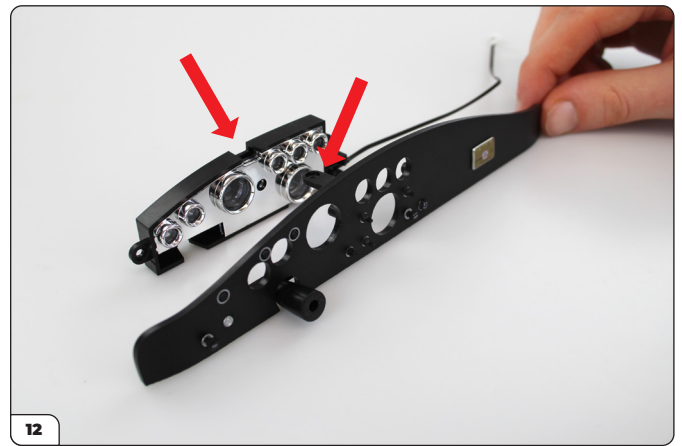
## Stage 42: Dashbord Dials and Switch

### CONTINUED...

Then align the chrome plate on the Dial Lenses assembly with the Main Panel from the previous stage. The central tab on the Main Panel extends into the notch on the dials (arrows - picture 12).

Fix everything together from the reverse side of the Main Panel using 3 x TYPE OP08 screws.

Press the light switch to make sure you can feel the click of the button. If not, check that you have installed the switch correctly.



## Stage 42: Dashbord Dials and Horn Switch

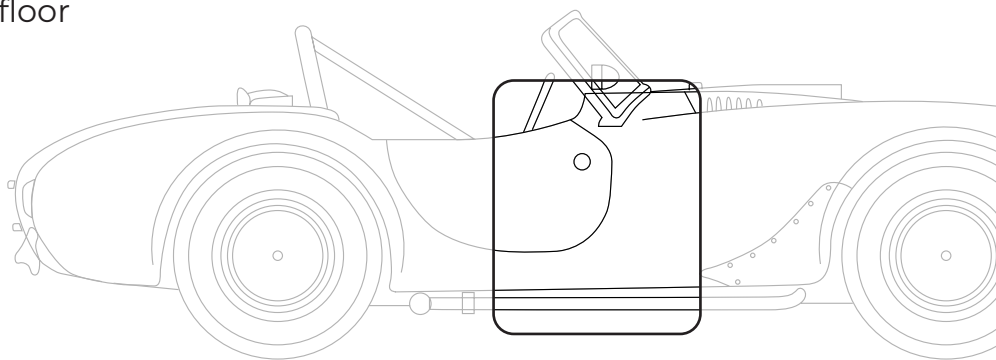
---

**Stage 42 complete!**



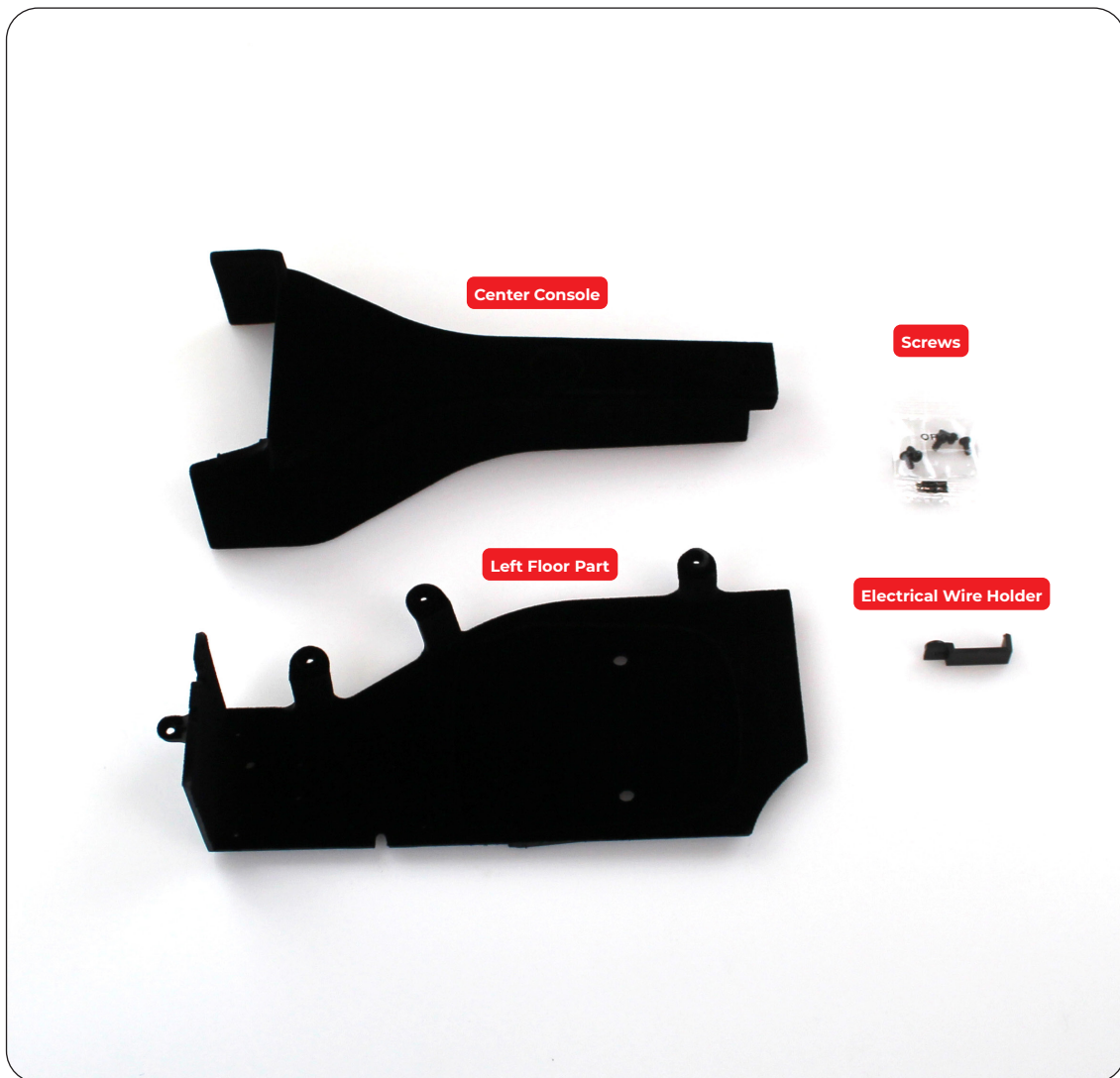
## Stage 43: Center Console and Left Floor Section

Now the dashboard is complete, you will start to assemble the floor sections.



### STAGE 43 PARTS LIST

Name	Quantity
Center Console	1
Left Floor Part	1
Electrical Wire Holder	1
Screws TYPE OP08	5



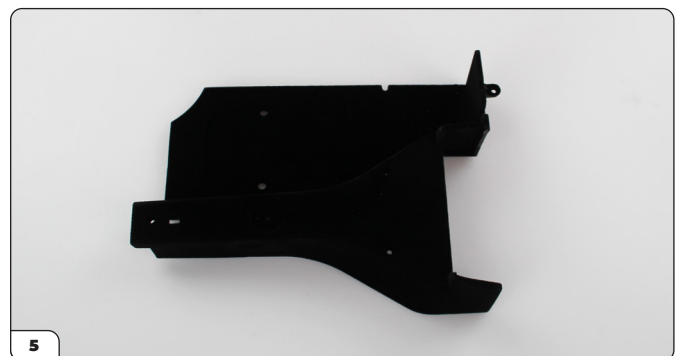
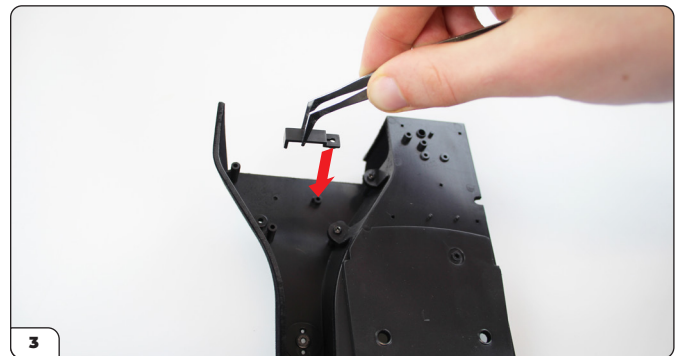
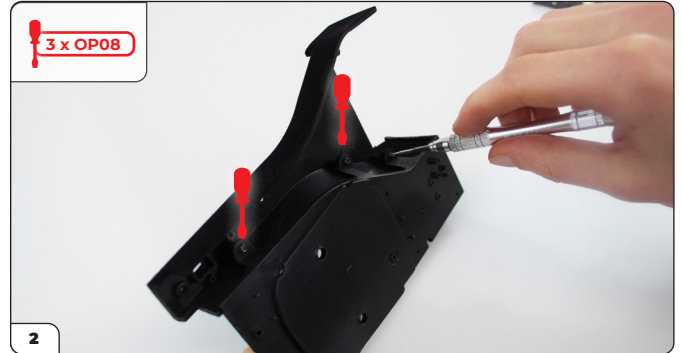
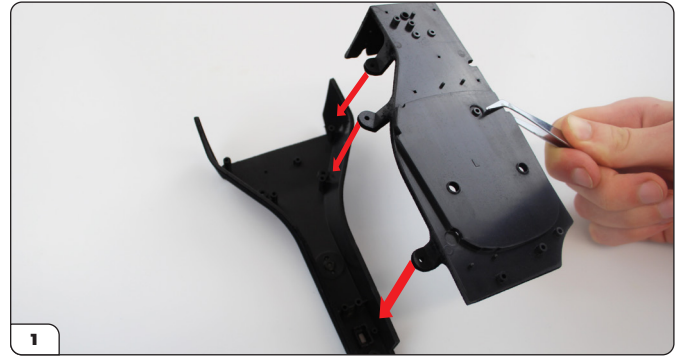
# Stage 43: Center Console and Left Floor Section

## STEP 1

### ASSEMBLE THE FLOOR

Place the Center Console on your worksurface with the reverse side facing up and align the screw holes on the Left Floor Part. Place the two sections together and fix using 3 x TYPE OP08 screws.

Then take the Electrical Wire Holder and fix it to the Center Console in the position shown using 1 x TYPE OP08 screw



## Stage 43: Center Console and Left Floor Section

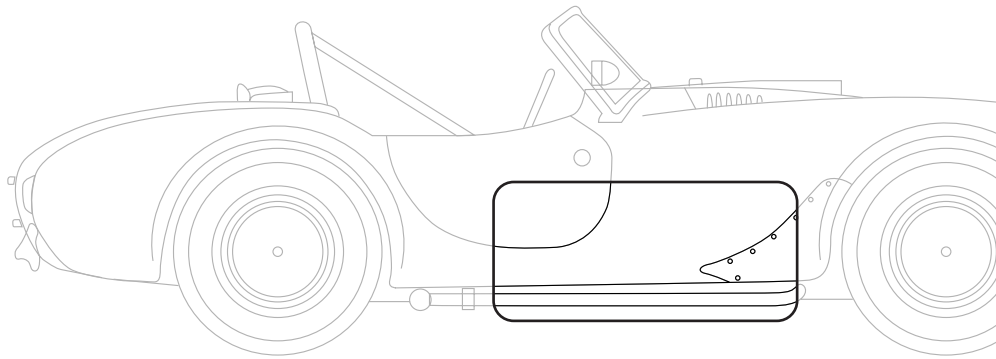
---

**Stage 43 complete!**



## Stage 44: Right Floor Section and Floor Mats

In stage 44, you will continue to assemble the floor.



### STAGE 44 PARTS LIST

Name	Quantity
Right Floor Part	1
Driver's Floor Mat	1
Passenger's Floor Mat	1
Screws TYPE OP08	4





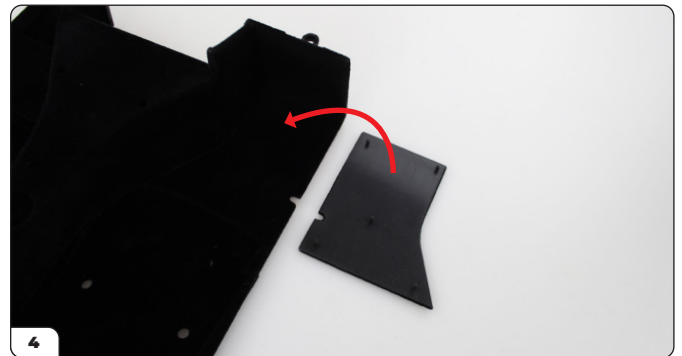
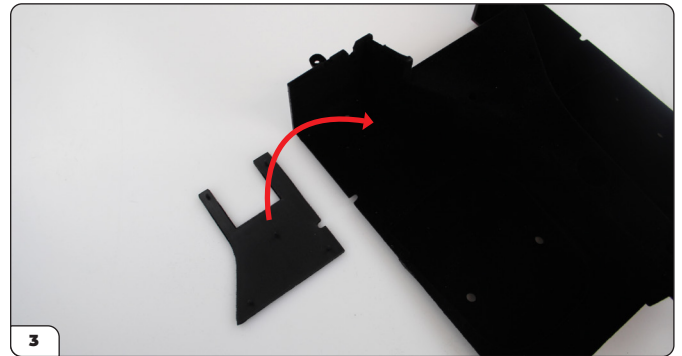
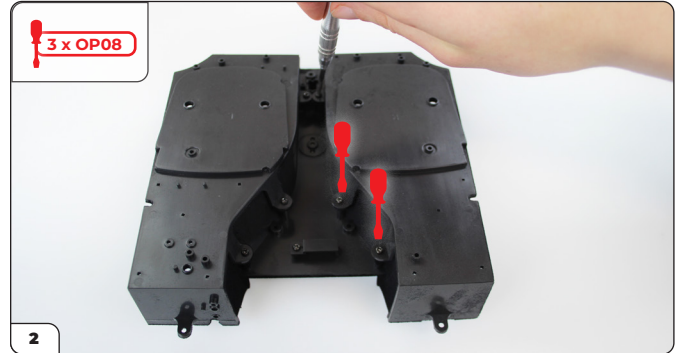
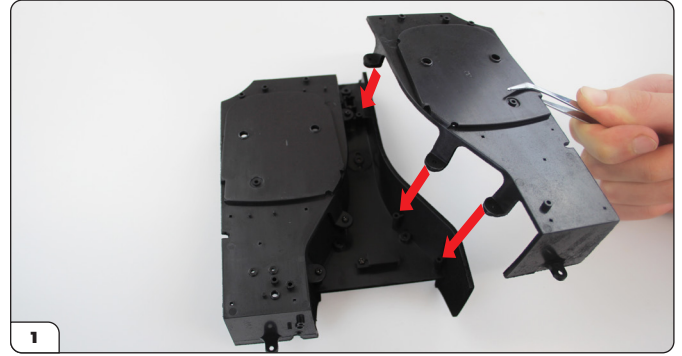
# Stage 44: Right Floor Section and Floor Mats

## STEP 1

### ASSEMBLE THE FLOOR AND FIX THE FLOOR MATS

Align the screw holes on the Right Floor Part with the opposite side of the Center Console, just as in the previous stage. Place the sections together and fix in place using 3 x TYPE OP08 screws.

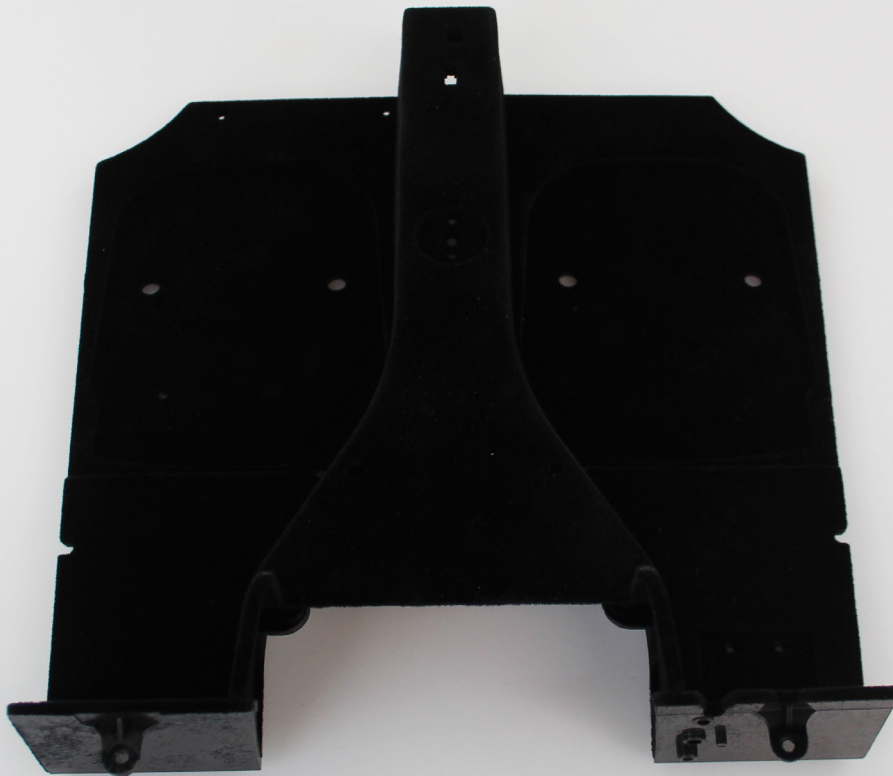
With the carpeted side facing upwards, position the Passenger's Floor Mat by pushing the lug on the reverse side through the corresponding hole in the floor. Repeat on the opposite side with the Driver's Floor Mat. Firmly push the sections together to hold.



## Stage 44: Right Floor Section and Floor Mats

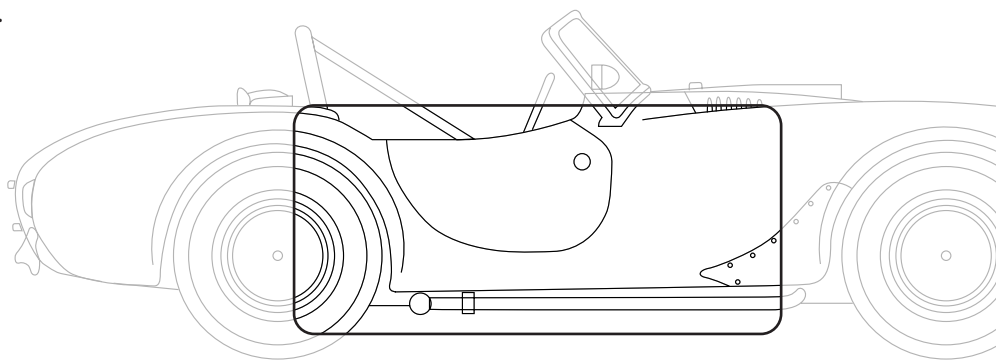
---

**Stage 44 complete!**



## Stage 45: Cockpit Rear Wall

In stage 45, you will add the rear wall of the cockpit to the floor.



### STAGE 45 PARTS LIST

Name	Quantity
Cockpit Rear Wall	1
Screws TYPE OP08	5



## Stage 45: Cockpit Rear Wall

### STEP 1

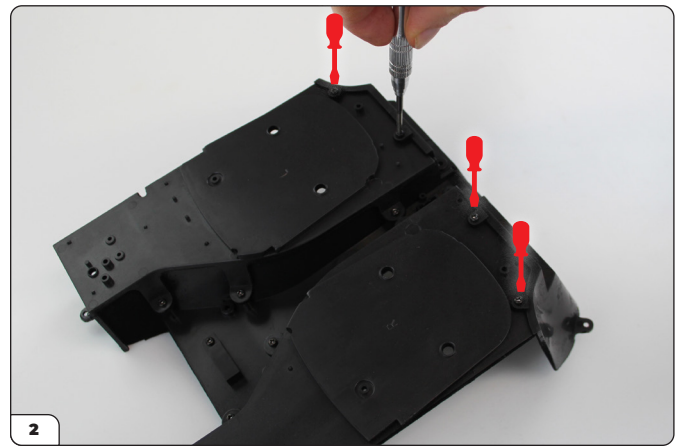
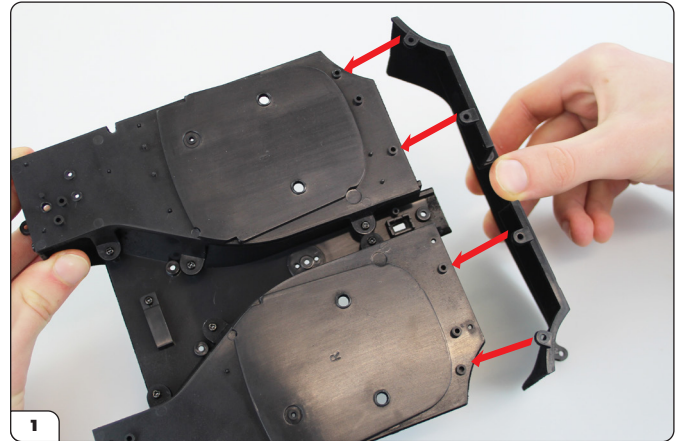
#### ATTACH THE REAR WALL

Take the Cockpit Rear Wall and align the four tabs-with-screwholes with the corresponding holes on the floor assembly. Place the parts together and fix using 4 x TYPE OP08 screws.



#### DOMESTIC TIP FROM THE EXPERTS

Be careful not to put the cockpit floor on a polished table as the screw heads could scratch it.

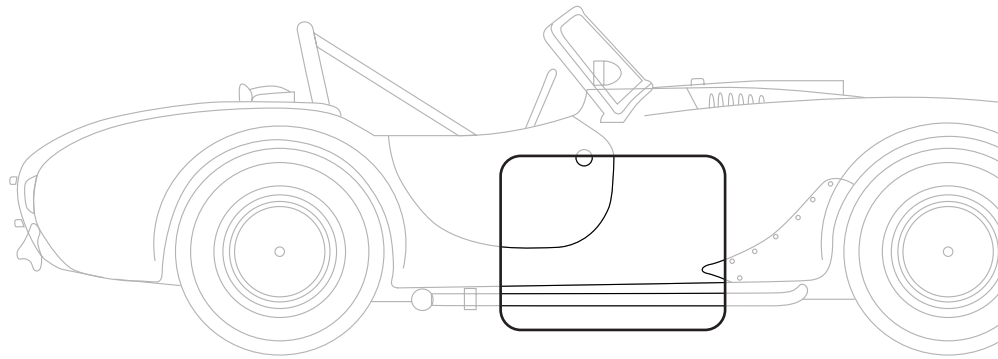


## Stage 45 complete!



## Stage 46: Gear Lever, Handbrake and U-Bar

In stage 46, you will add the gear lever, hand brake and U-bar



### STAGE 46 PARTS LIST

Name	Quantity
Gear Lever	1
Gear Lever Knob	1
Gear Lever Boot	1
Gear Lever Bracket	1
Hand Brake Lever	1
Central Consol U Bar	1
Screws TYPE OP08	4

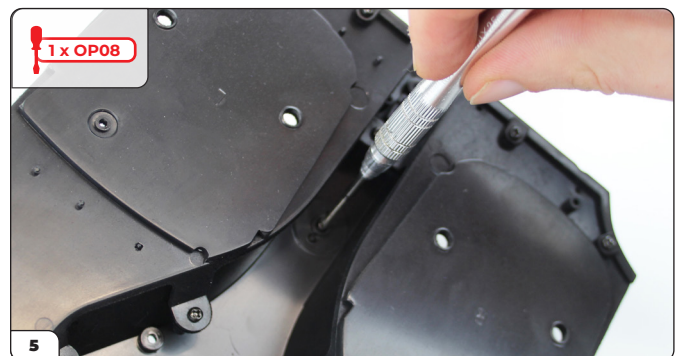
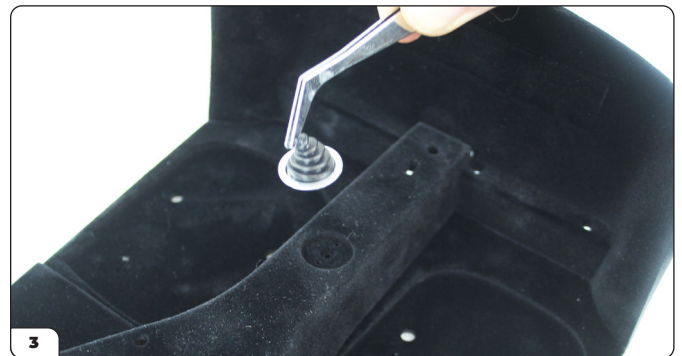
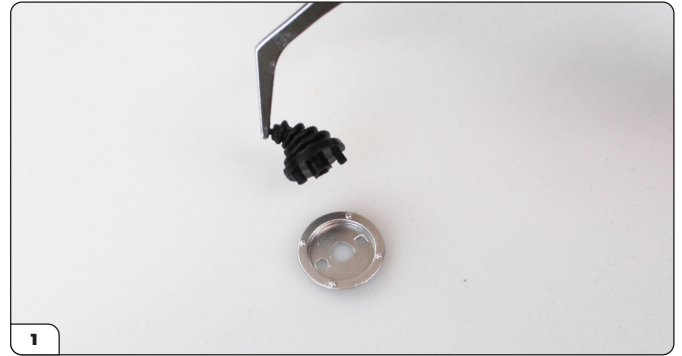


# Stage 46: Gear Lever, Handbrake and U-Bar

## STEP 1

### ASSEMBLE THE GEAR LEVER BOOT & BRACKET

Align the two little pins on the Boot with the two little holes in the Bracket. Place the parts together, then, still holding them together if necessary, position them both on the Center Console. Study picture 4 to check to have it facing the correct direction. The Boot should face the front of the car. Turn the Floor assembly over and fix the Boot & Bracket in place using 1 x TYPE OP08 screw.

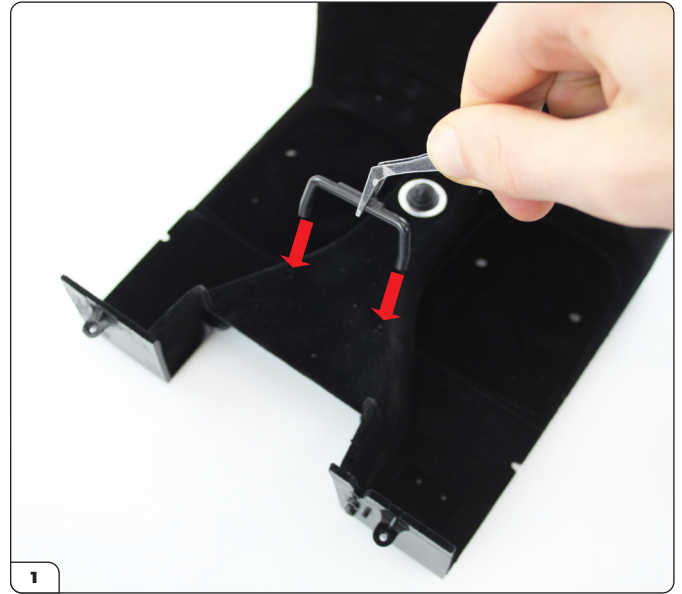


# Stage 46: Gear Lever, Handbrake and U-Bar

## STEP 2

### ATTACH THE U-BAR

Push the ends of the U-bar into the holes in the Center Console and fix in place from the reverse side using 2 x TYPE OP08 screws.



# Stage 46: Gear Lever, Handbrake and U-Bar

## STEP 3

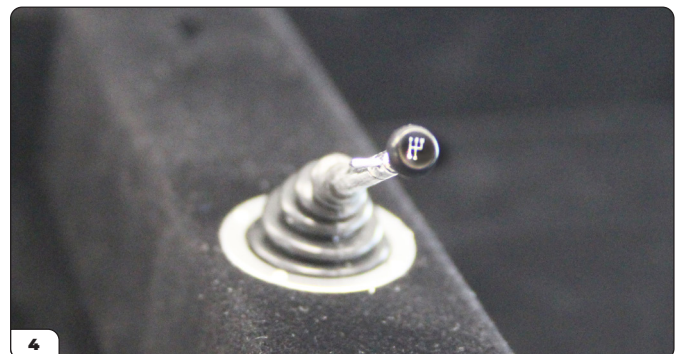
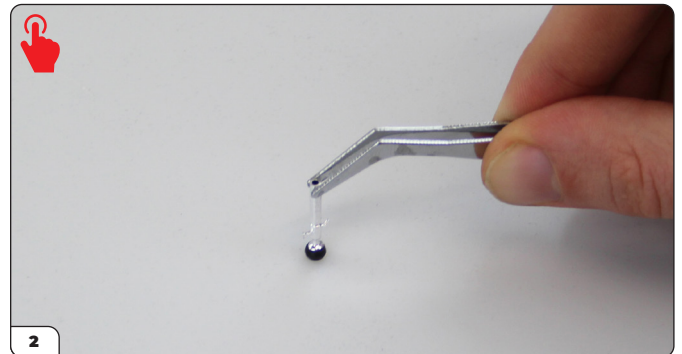
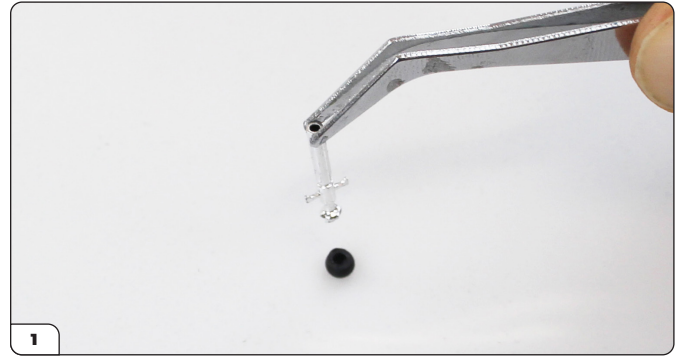
### ASSEMBLE & ATTACH THE GEAR LEVER

Push-fit the Gear Lever Knob to the Gear Lever. The knob has a D shaped hole to ensure that the numbers are correct. Push-fit the Gear Lever onto the Gear Lever Boot, making sure the two tabs are horizontal. Check the numbers are right. If not, pull the lever off and replace it the other way round.



### ADVICE FROM THE EXPERTS

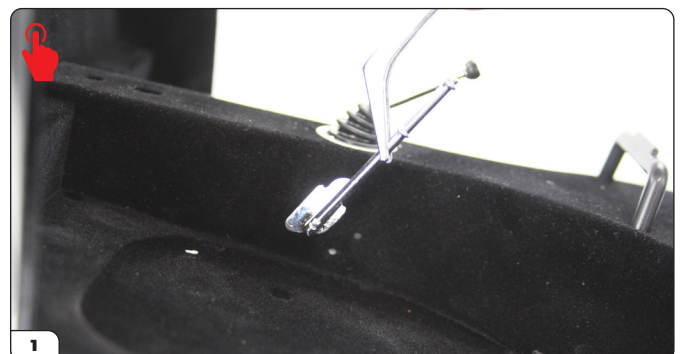
The gear lever is quite delicate. You may prefer to leave fitting it until after the seats are fitted.



## STEP 4

### ATTACH THE HAND BRAKE

Align the pins on the Hand Brake Lever with the two small holes on the Center Console and push-fit into place.





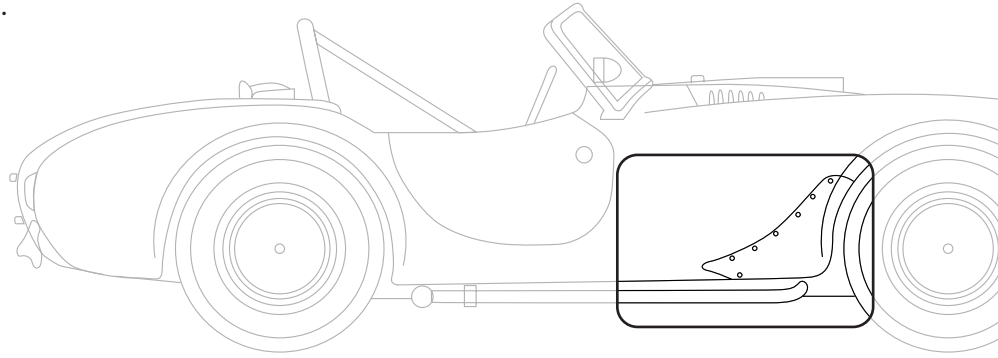
# Stage 46: Gear Lever, Handbrake and U-Bar

**Stage 46 complete!**



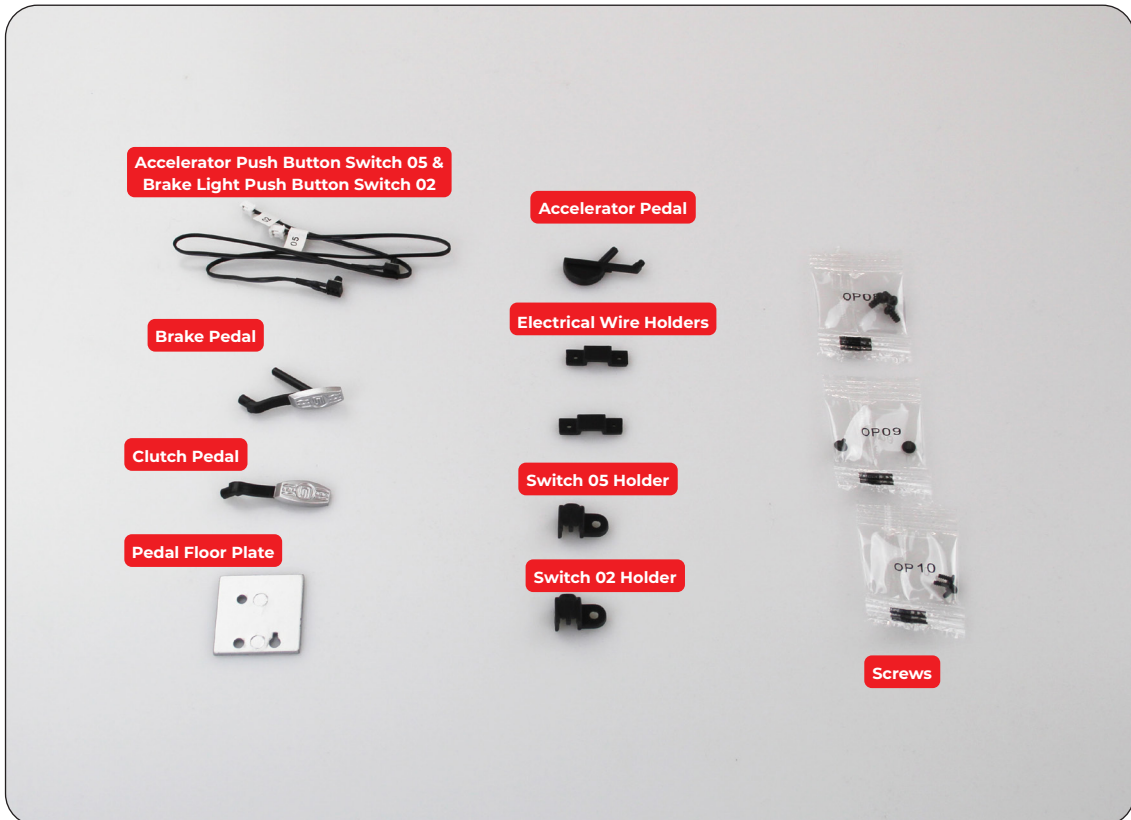
# Stage 47: Accelerator Pedal & Switch, Brake Pedal & Switch, Clutch Pedal, Floor Plate

In stage 47, you will attach the pedals and electrical switches.



## STAGE 47 PARTS LIST

Name	Quantity
Accelerator Push Button Switch 05	1
Push Button Switch 05 Holder	1
Brake Light Push Button Switch 02	1
Push Button Switch 02 Holder	1
Electrical Wire Holders	2
Accelerator Pedal	1
Brake Pedal	1
Clutch Pedal	1
Pedal Floor Plate	1
Screws TYPE OP08	3
Screws TYPE OP09	2
Screws TYPE OP10	3



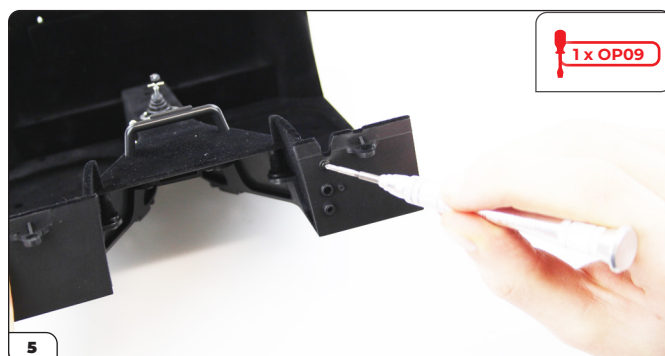
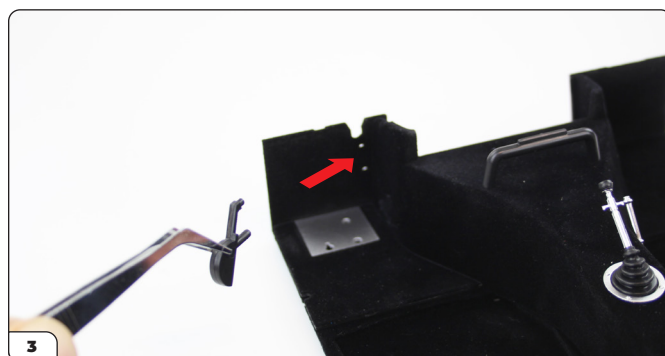
# Stage 47: Accelerator Pedal & Switch, Brake Pedal & Switch, Clutch Pedal, Floor Plate

## STEP 1

### ATTACH THE PEDAL FLOOR PLATE AND PEDALS

Push-fit the Pedal Floor Plate onto the floor assembly in the position shown. The lugs on the plate fit the holes in the floor.

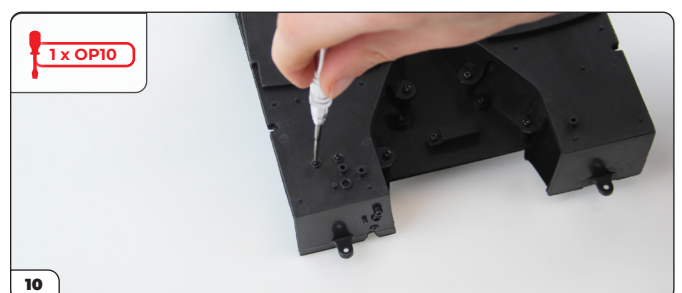
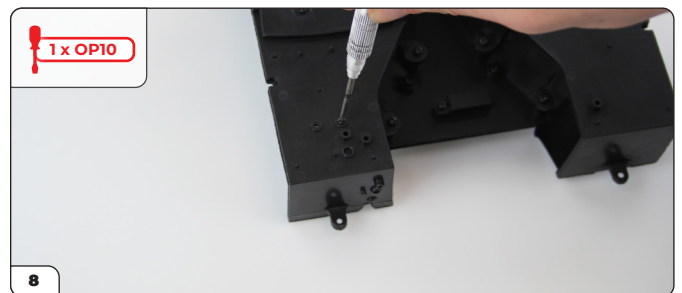
Then take the Accelerator Pedal and push the two small lugs through holes in the floor as shown. Fix in place from the reverse side using 1 x TYPE OP09 screw



# Stage 47: Accelerator Pedal & Switch, Brake Pedal & Switch, Clutch Pedal, Floor Plate

## CONTINUED...

Push the two lugs on the Brake Pedal into the small holes on the Plate. Fix in place from the reverse using 1 x TYPE OP10 screw. Then push the single lug on the Clutch Pedal into the small hole on the Plate and fix in place with another TYPE OP10 screw.



# Stage 47: Accelerator Pedal & Switch, Brake Pedal & Switch, Clutch Pedal, Floor Plate

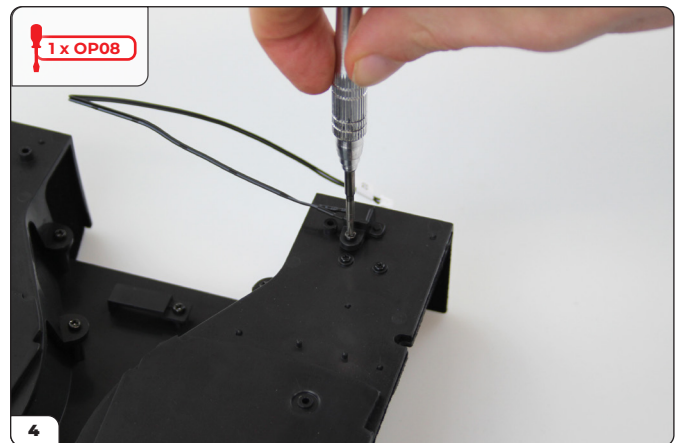
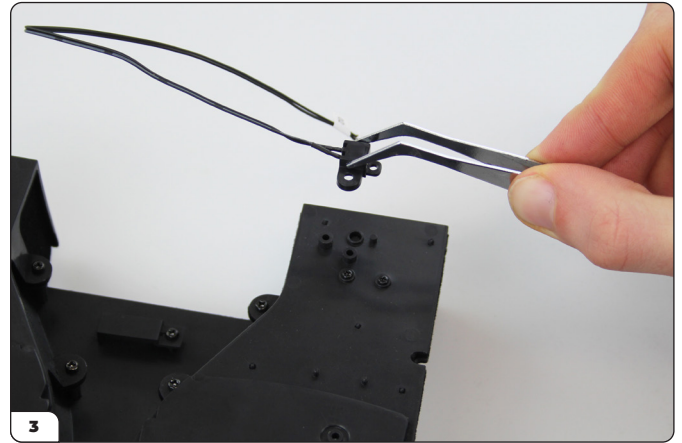
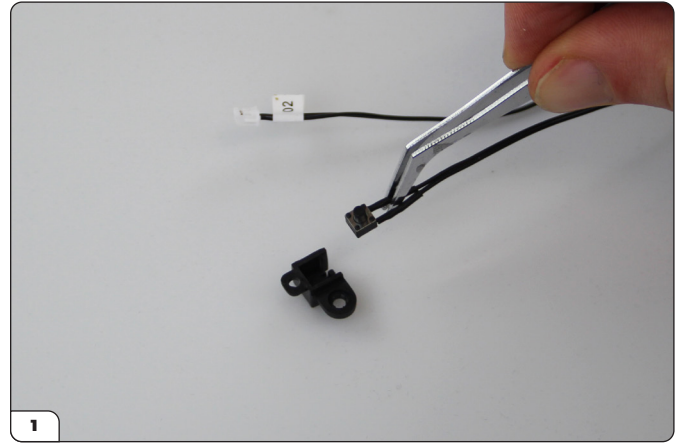
## STEP 2

### FIX THE ELECTRICAL WIRES

Push-fit the Switch 02 into one of the Switch Holders. Both Switch Holders are the same. Then align the Switch Holder/Switch assembly with the screw holes on the underside of the floor as shown. Fix in place with a TYPE OP08 screw.

Check the switch is fitted correctly by pressing the pedal – you should be able to hear the switch clicking.

Also make sure the switches are on tightly to prevent movement when the pedals are pushed.



# Stage 47: Accelerator Pedal & Switch, Brake Pedal & Switch, Clutch Pedal, Floor Plate

## CONTINUED...

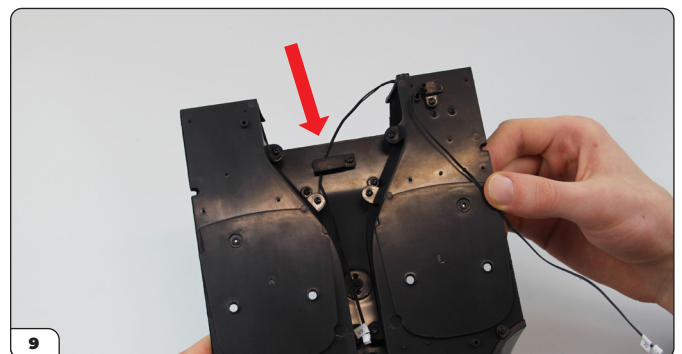
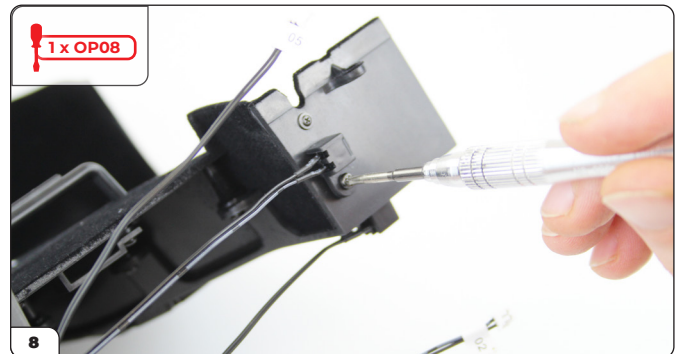
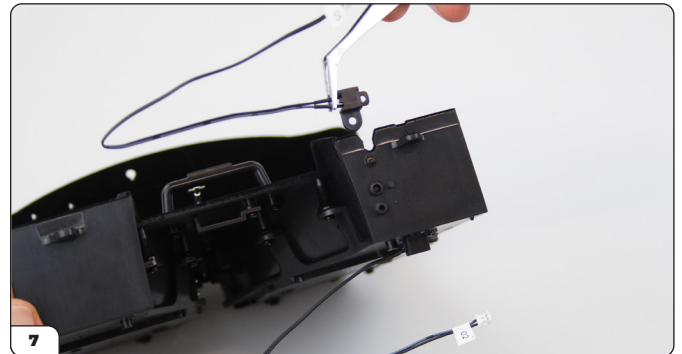
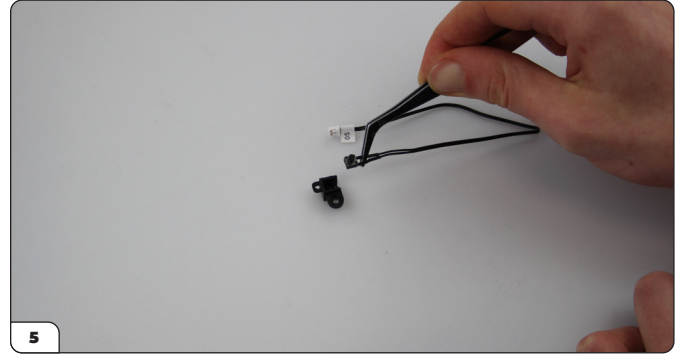
Repeat by push-fitting Switch 05 into the second Switch Holder and fix to the reverse side of the Cockpit Rear Wall using another TYPE OP08 screw. Thread Cable 05 through the Cable Holder as shown in picture 9.

Again, check the switch is fitted correctly by pressing the pedal – you should be able to hear the switch clicking.



### ADVICE FROM THE EXPERTS:

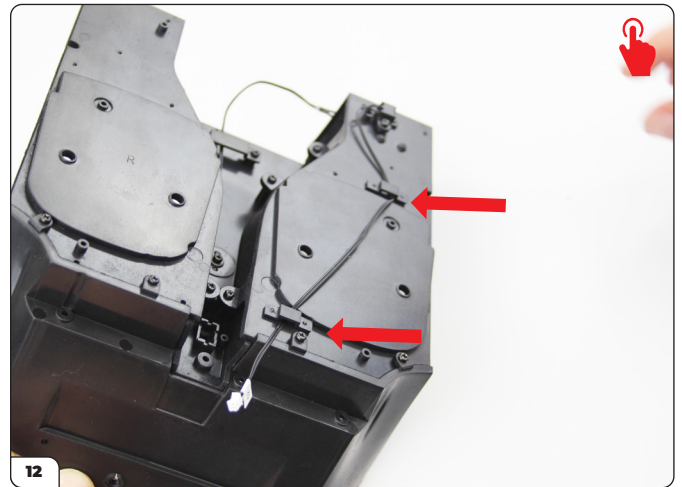
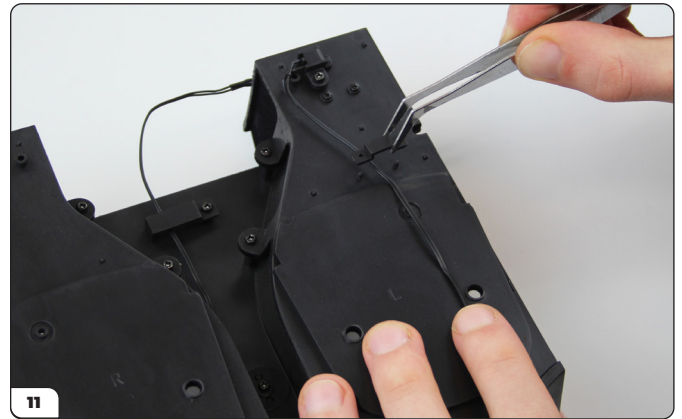
If the switch isn't clicking in and out correctly, file out the switch hole a little to ensure that there isn't any flock blocking it, or try loosening the screw that is holding the pedal a little to allow more movement.



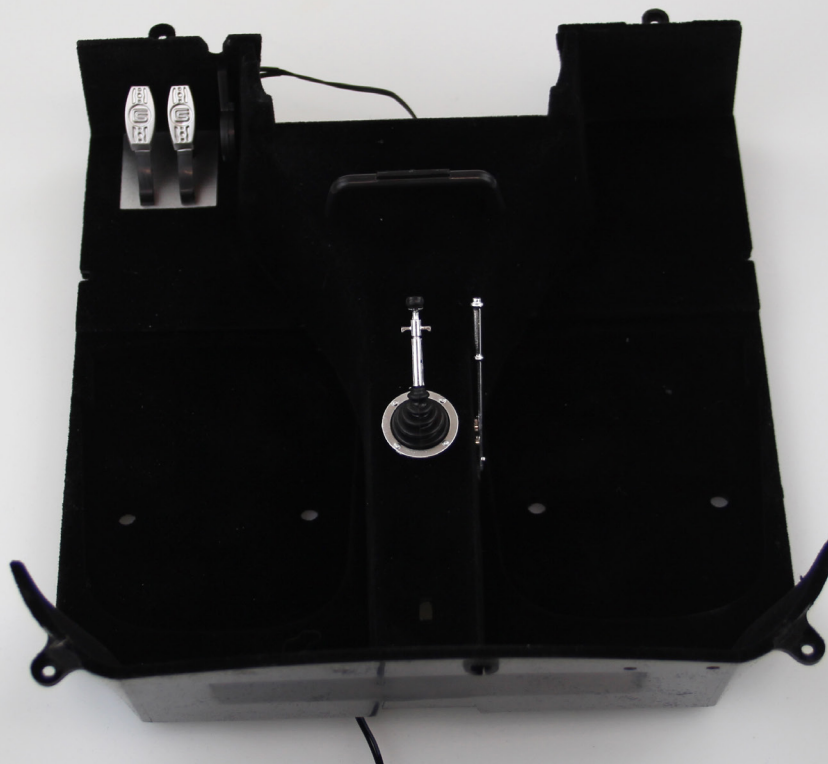
# Stage 47: Accelerator Pedal & Switch, Brake Pedal & Switch, Clutch Pedal, Floor Plate

## CONTINUED...

Secure Cable 02 to the underside of the floor using two Cable Holders as shown. The Cable Holders push-fit into place.

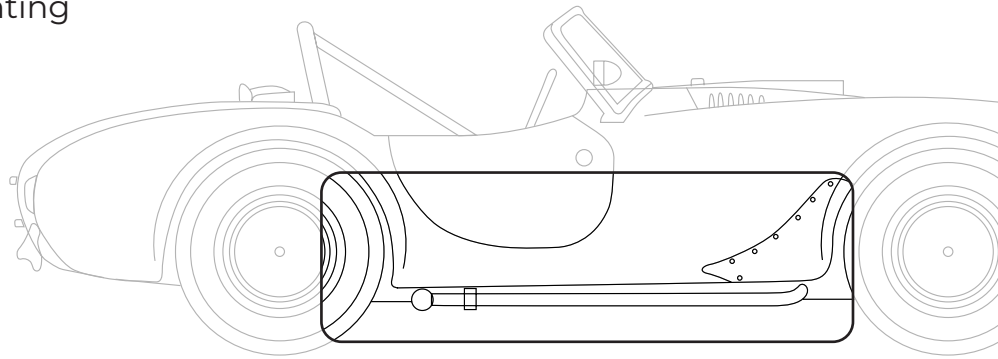


**Stage 47 complete!**



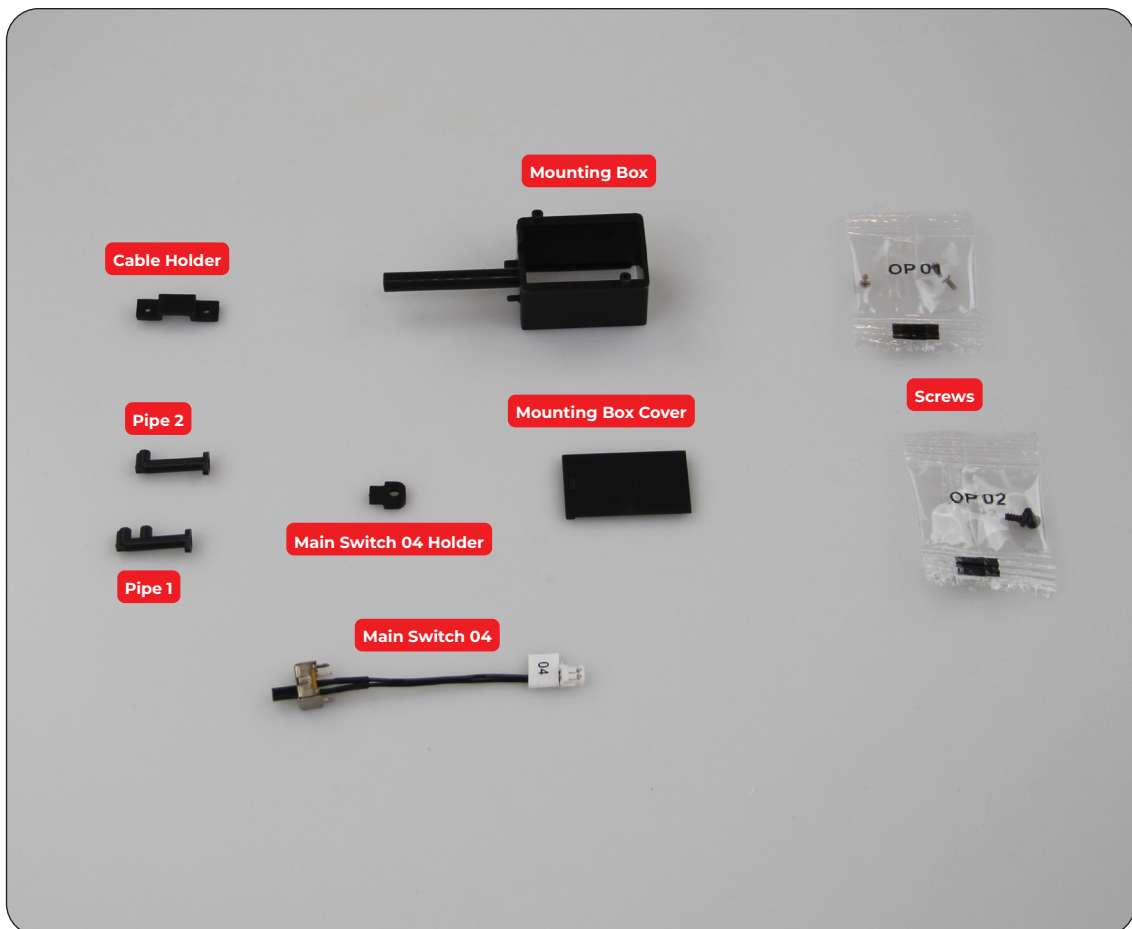
## Stage 48: Mounting Box and Main Switch

In stage 48, you will attach the main switch and fix the mounting box to the chassis.



### STAGE 48 PARTS LIST

Name	Quantity
Mounting Box	1
Mounting Box Cover	1
Pipe 1	1
Pipe 2	1
Main Switch 04	1
Main Switch 04 Holder	1
Cable Holder	1
Screws TYPE OP01	3
Screws TYPE OP02	2



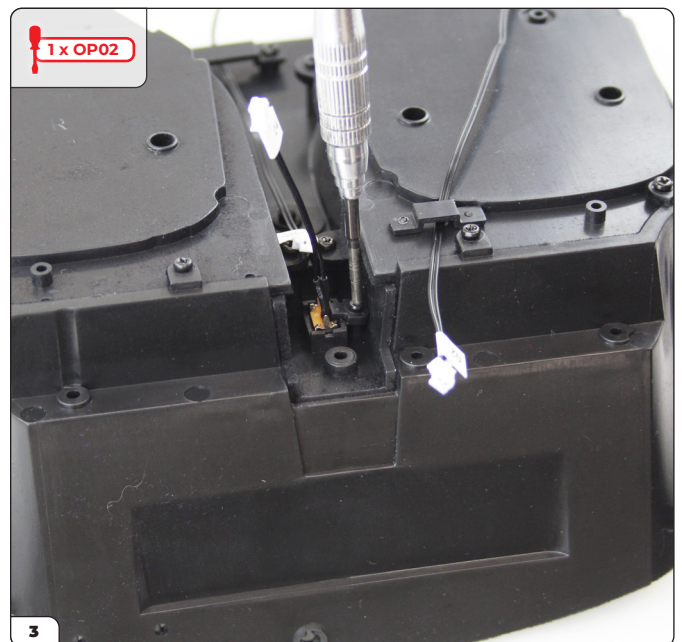
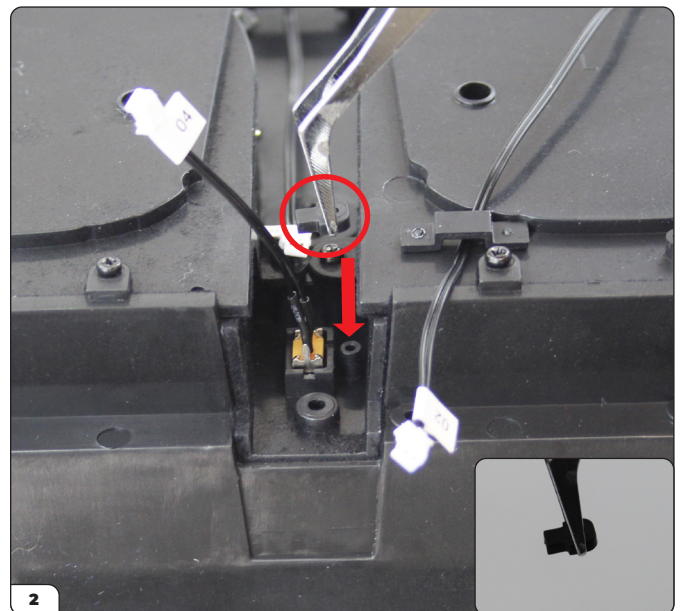
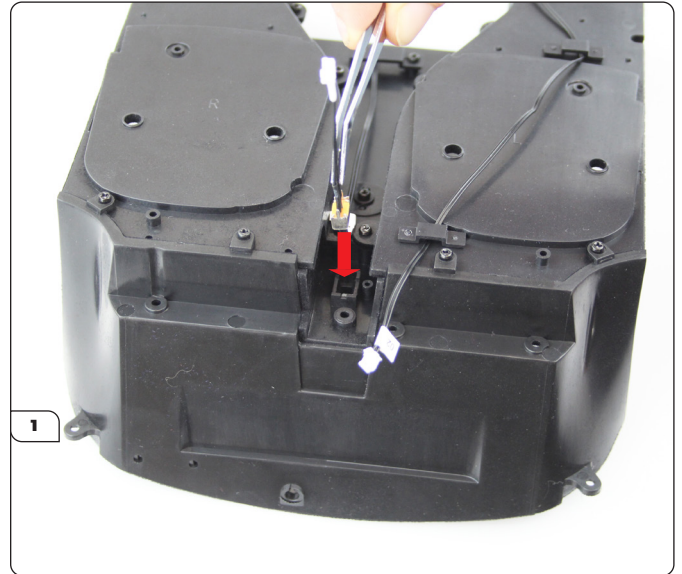


# Stage 48: Mounting Box and Main Switch

## STEP 1

### FIX THE MAIN SWITCH

Take the Main Switch 04 and connect it to the socket in the Center Console as shown. Lower the Main Switch 04 Holder on top of the socket to hold the switch in place and fix with a TYPE OP02 screw.

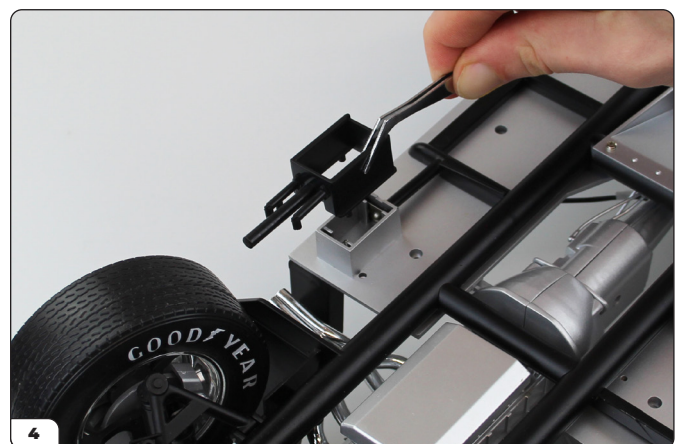
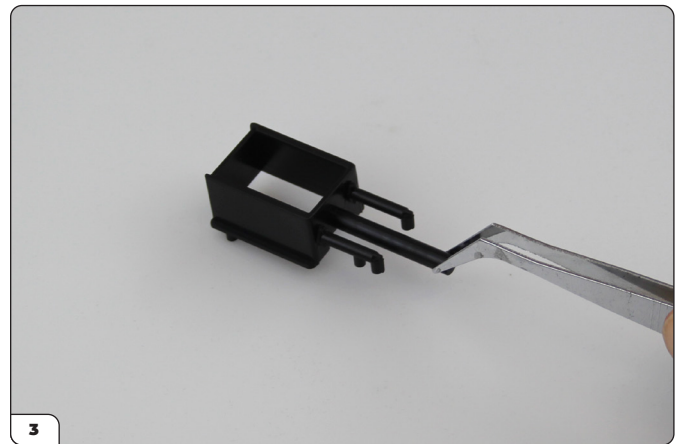
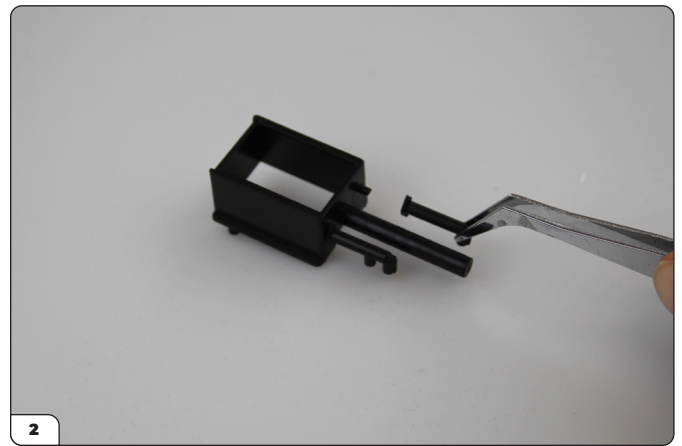
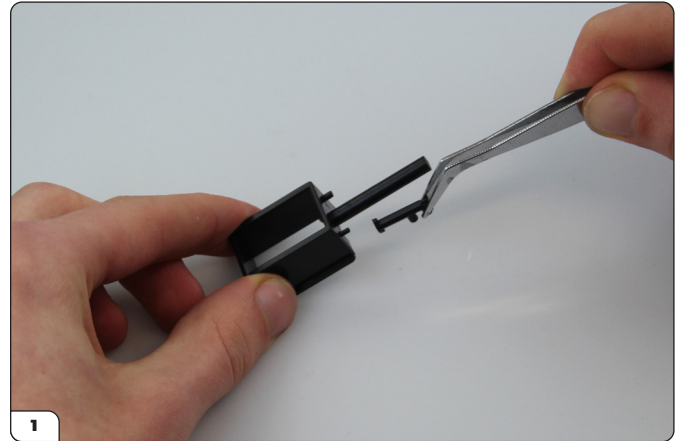


# Stage 48: Mounting Box and Main Switch

## STEP 2

### ASSEMBLE AND ATTACH THE MOUNTING BOX

Push-fit Pipe 1 and Pipe 2 to the Mounting Box as shown. Place the chassis upside down on your work surface and lower the Box into position behind the left front wheel. Study the picture to check that the bend in the Pipes face the correct direction, towards the exhaust pipes. The pins are D-shaped to ensure correct alignment.

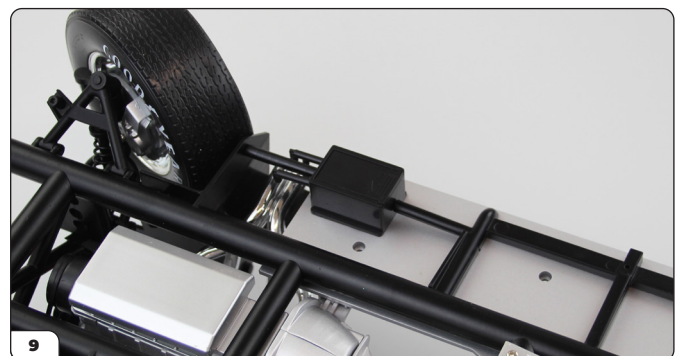
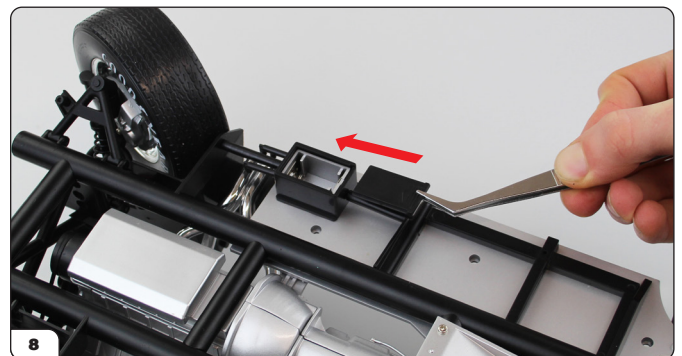
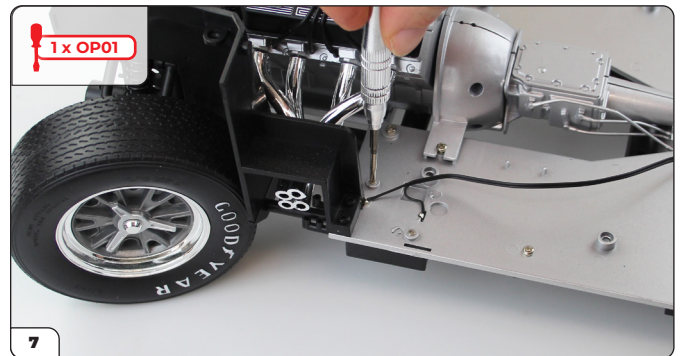
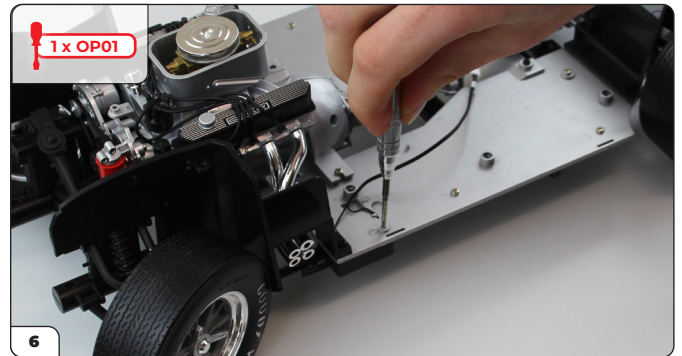
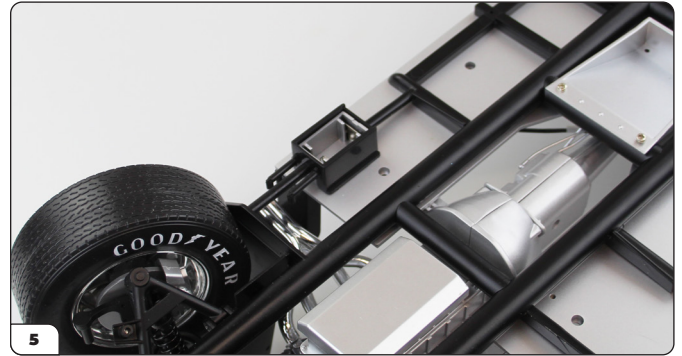


# Stage 48: Mounting Box and Main Switch

## CONTINUED...

Once in position, turn the chassis over so it's the right way up and fix the Mounting Box in place using 2 x TYPE OP01 screws.

Slide the Mounting Box Cover onto the box.

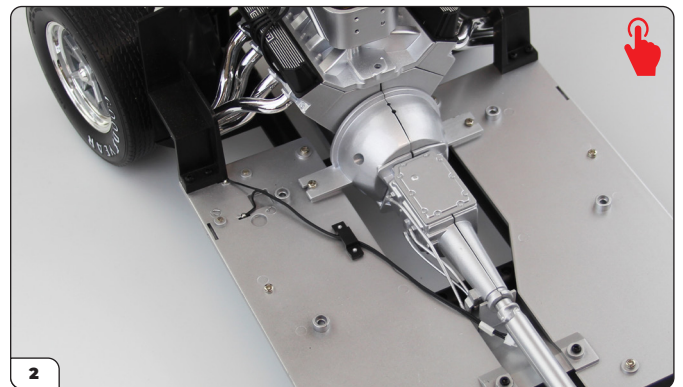
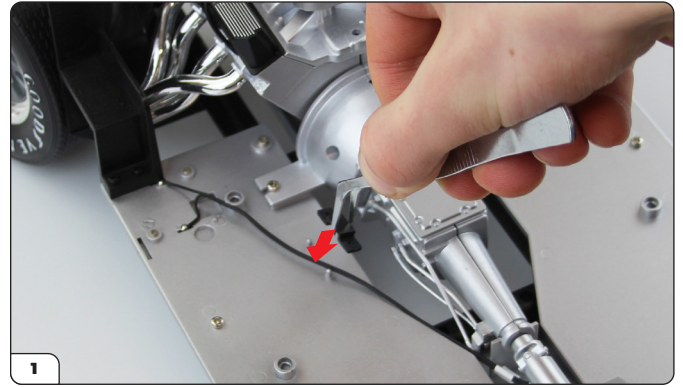


# Stage 48: Mounting Box and Main Switch

## STEP 3

### FIX THE CABLE HOLDER

Finally, position the Cable Holder on the floor panels to secure Cable 01 in place. This is a push fit so press firmly.



## Stage 48 complete!

