

1 9 6 5

SHELBY COBRA

427 SEMI-COMPETITION

1:8 SCALE



Pack 08 | Build Instructions

In the 1960s, Carroll Shelby's Cobras dominated racetracks worldwide, first winning races coast to coast across North America, then in 1965, winning the World Manufacturer's GT Championship, achieving the ultimate goal of defeating Ferrari. The Semi-Competitions were modified from full competition models just enough to make them street legal. Only 29 models were produced, making them one of the most sought-after American sports cars by collectors.

Your 1:8 model replicates the original 1965 Semi-Competition Cobra in intricate detail. From the detail on the dashboard dials to the writing on the wheels, every piece is precisely reproduced.

In your eighth model pack, you will continue to build :

STAGE 57: FUEL TANK

STAGE 58: REAR TRUNK

**STAGE 59: FUEL PUMPS, PIPES,
TRUNK HINGE & LOCK**

**STAGE 60: REAR FENDER PART
& CABLE HOLDER**

STAGE 61: FIREWALL

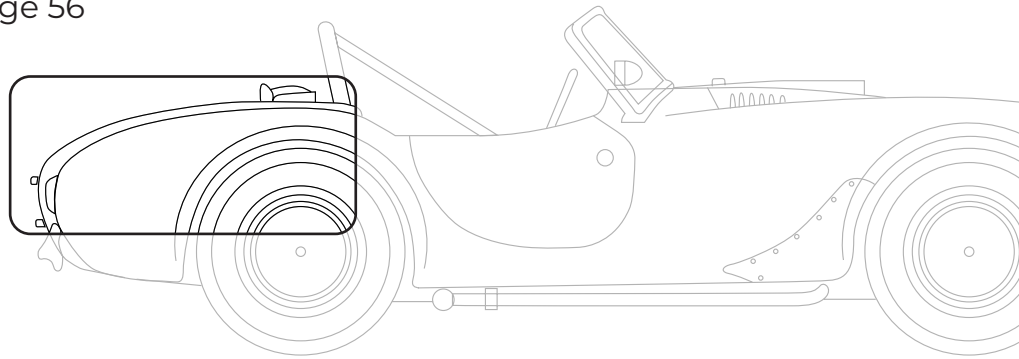
**STAGE 62: SPEAKER AND
SPEAKER HOLDER**

**STAGE 63: CABLE HARNESS
AND ELECTRICAL DEVICES**

STAGE 64: MORE ELECTRICAL DEVICES

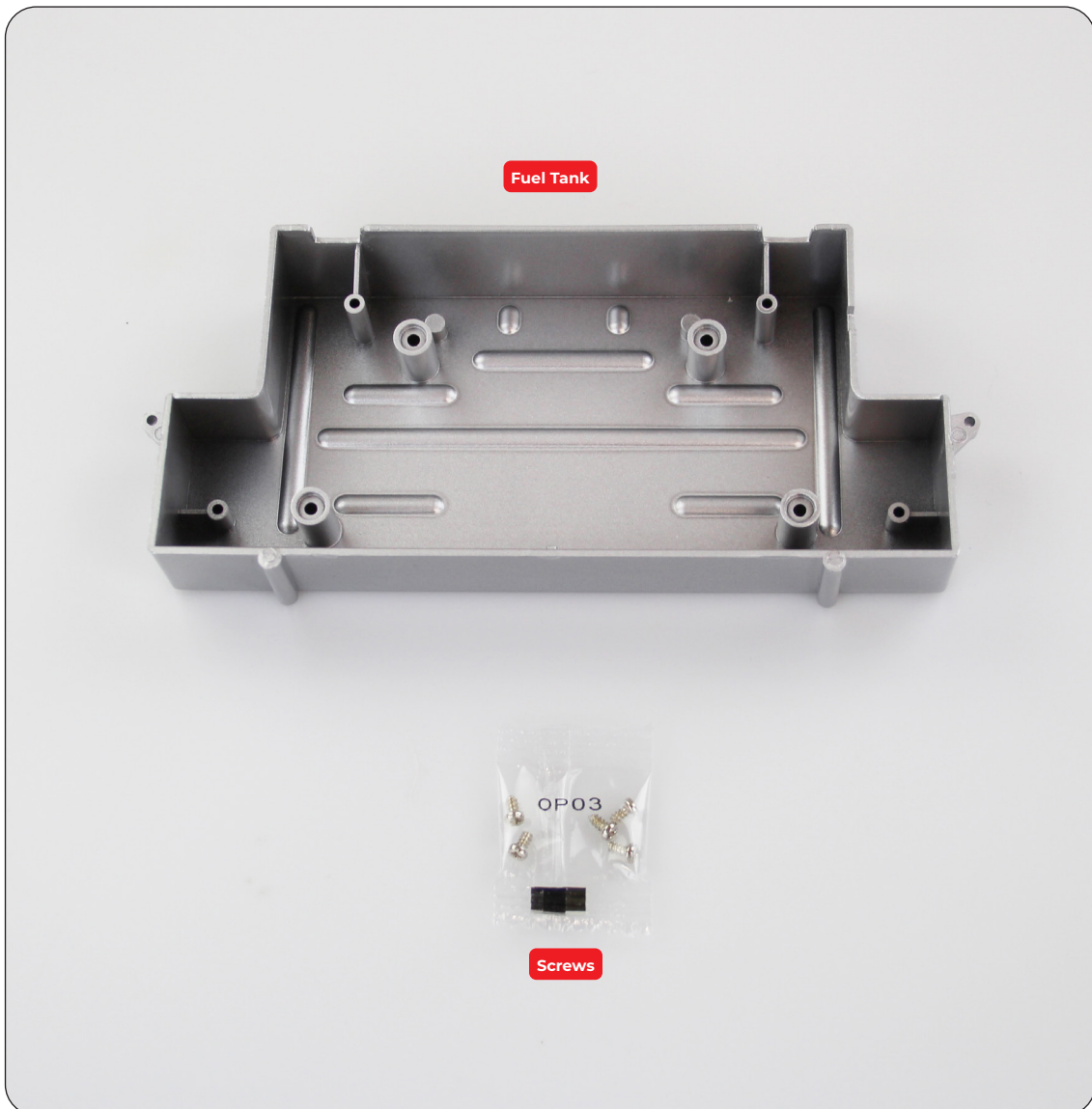
Stage 57: Fuel Tank

In the first stage of Pack 8, you will fit the circuit board from stage 56 to the fuel tank.



STAGE 57 PARTS LIST

Name	Quantity
Fuel Tank	1
Screws TYPE OP03	5

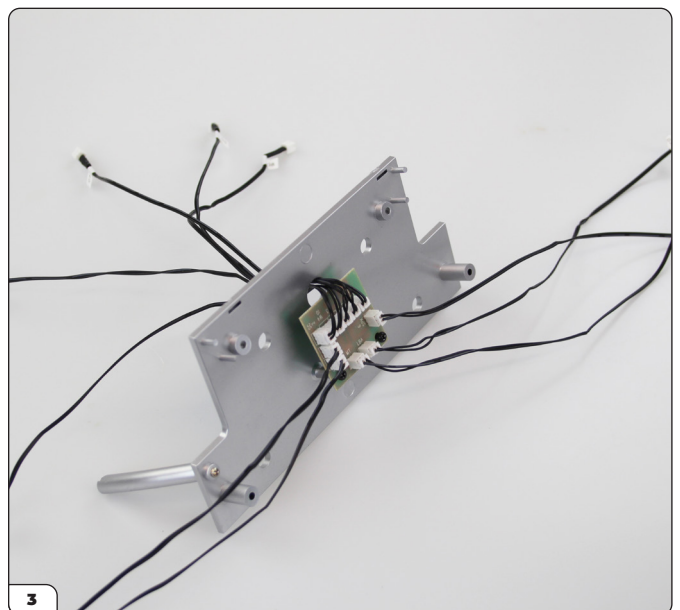
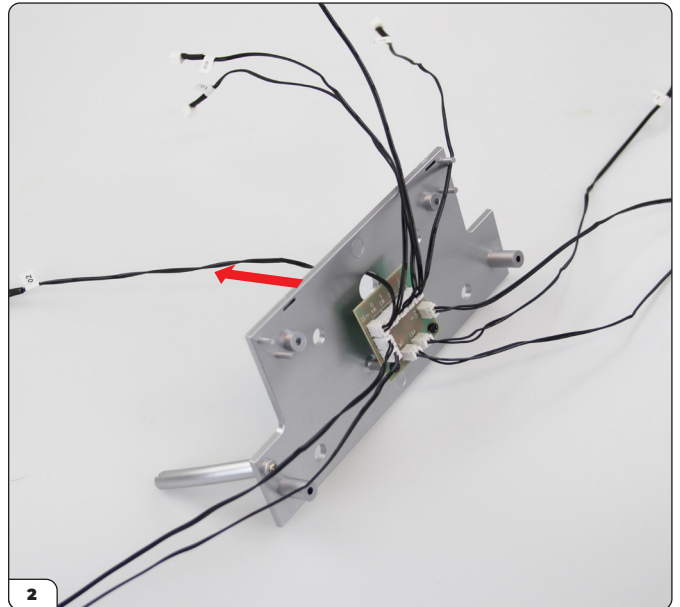
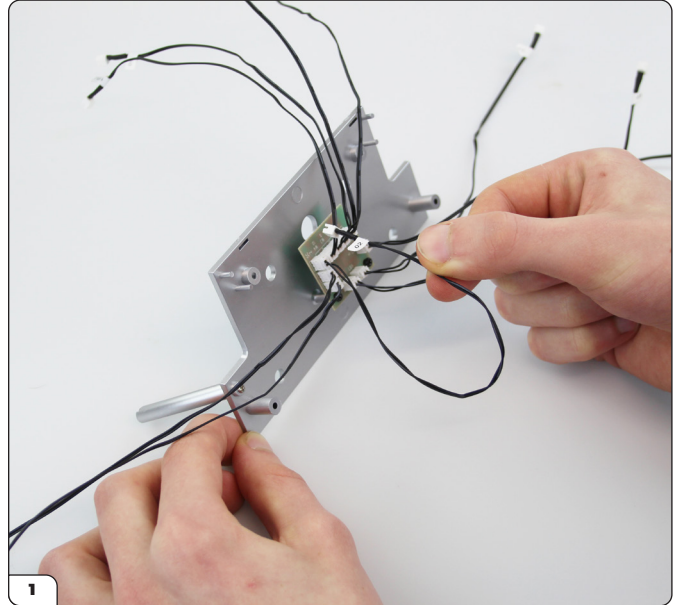


Stage 57: Fuel Tank

STEP 1

ARRANGE THE CABLES

Take the circuit board/trunk board assembly from stage 56 and, starting with cable No. 2, feed cables 2, 10, 9, 8 & 7 through the hole just above the top edge of the circuit board (pictures 1-3).



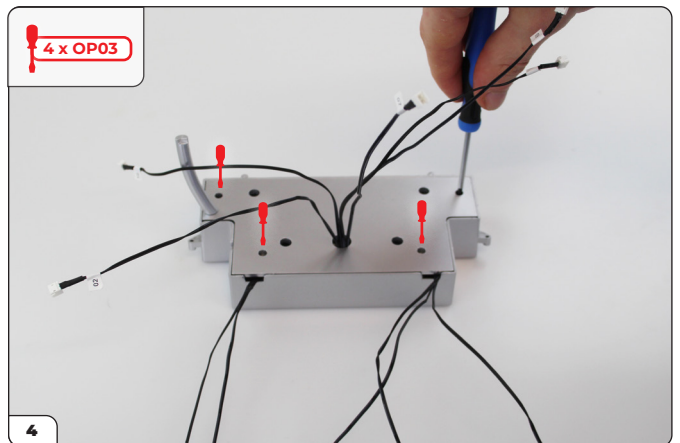
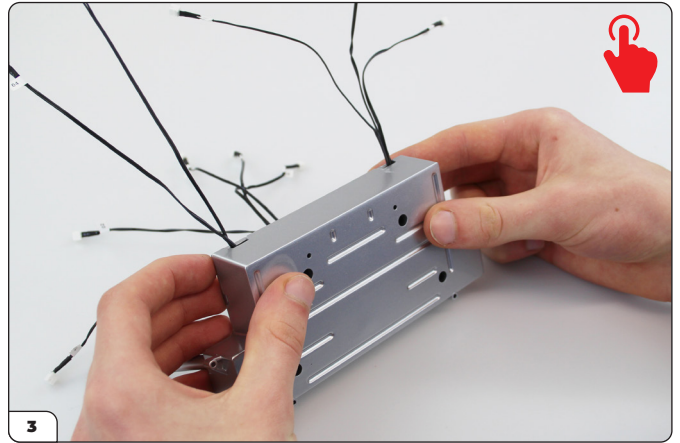
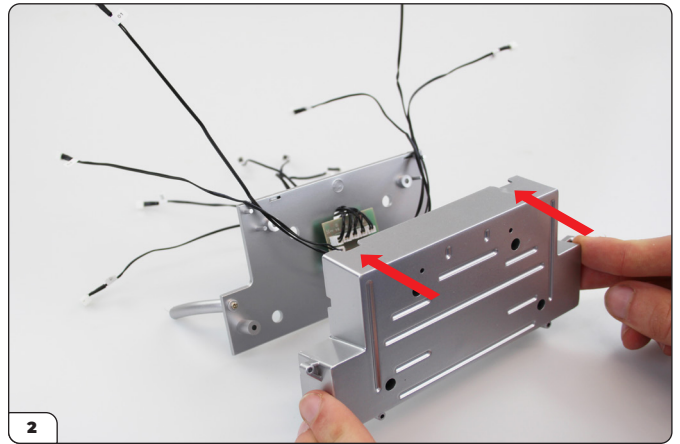
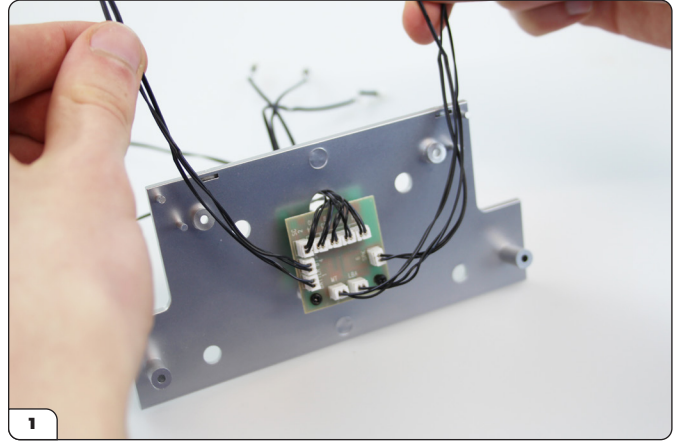
Stage 57: Fuel Tank

STEP 2

FIT THE FUEL TANK TO THE TRUNK BOARD

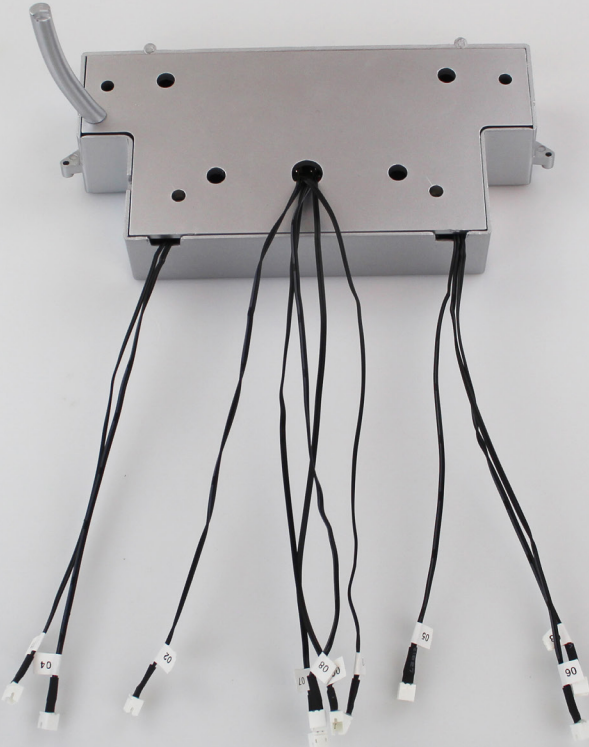
Group the two cables on the left (No.s 1 & 4), and the three remaining cables (No.s 3, 5 & 6) to the right. Position them so that they sit within the notches of the Fuel Tank when the parts are aligned as shown in picture 2. Check the screw holes are aligned, and secure the two parts together with 4 x TYPE OP03 screws.

Keep checking that the cables are not trapped as you fit the parts.



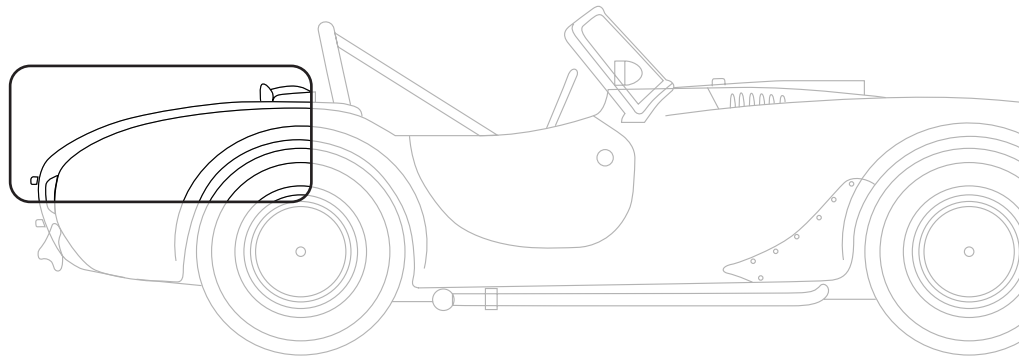
Stage 57: Fuel Tank

Stage 57 complete!



Stage 58: Rear Trunk

You will now build the trunk and fix it to the fuel tank assembly.



STAGE 58 PARTS LIST

Name	Quantity
Rear Trunk Main Part	1
Rear Trunk Front Wall	1
Screws TYPE OP03	5
Screws TYPE OP08	3

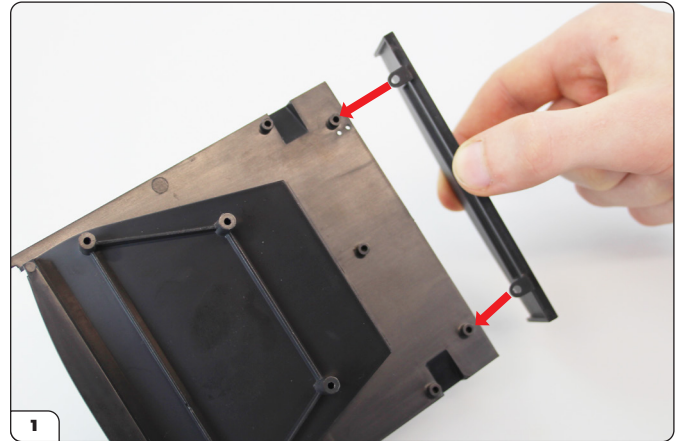


Stage 58: Rear Trunk

STEP 1

ATTACH THE REAR TRUNK FRONT WALL

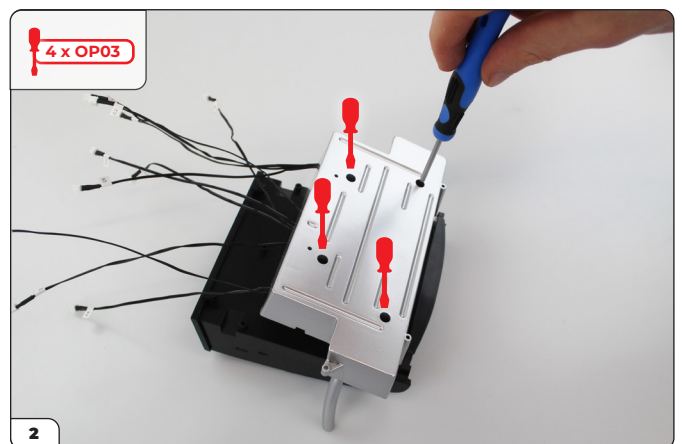
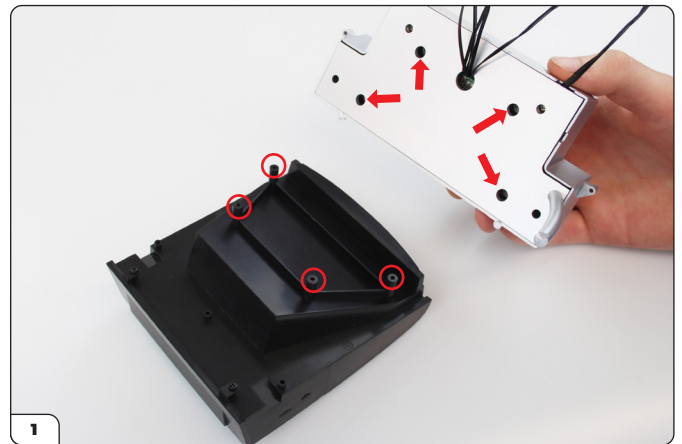
Align the screw holes on the Rear Trunk Front Wall with holes on the Rear Trunk Main Part. Secure the two parts together using 2 x TYPE OP08 screws.



STEP 2

ATTACH THE TRUNK TO THE FUEL TANK ASSEMBLY

Align the raised screw holes on the Trunk Main Part with the corresponding holes on the trunk board. Fit the parts together and secure in place with 4 x OP03 screws.



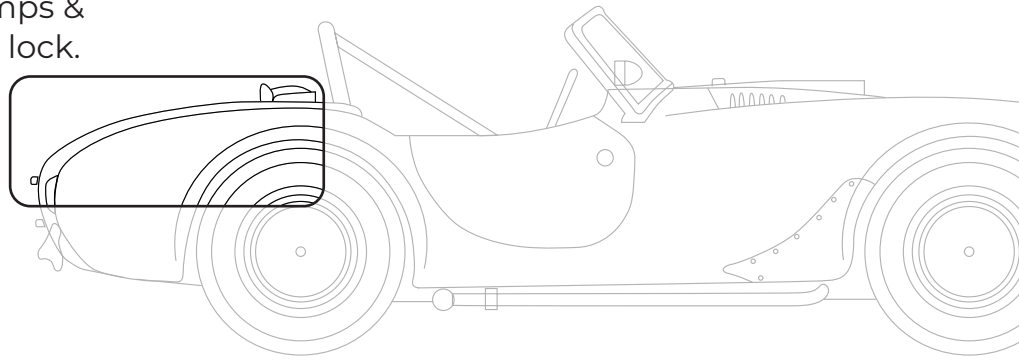
Stage 58: Rear Trunk

Stage 58 complete!



Stage 59: Fuel Pumps, Pipes, Trunk Hinge & Lock

Next, you will add some details to the trunk, including fuel pumps & pipes, and the trunk hinge & lock.



STAGE 59 PARTS LIST

Name	Quantity
Fuel Pump 1	1
Fuel Pump Pipe 1	1
Fuel Pump Pipe 2	1
Fuel Pump 2	1
Fuel Pump Pipe 3	1
Fuel Pump Pipe 4	1
Trunk Support	1
Trunk Hinge	1
Trunk Lock	1
Screws TYPE OP10	3



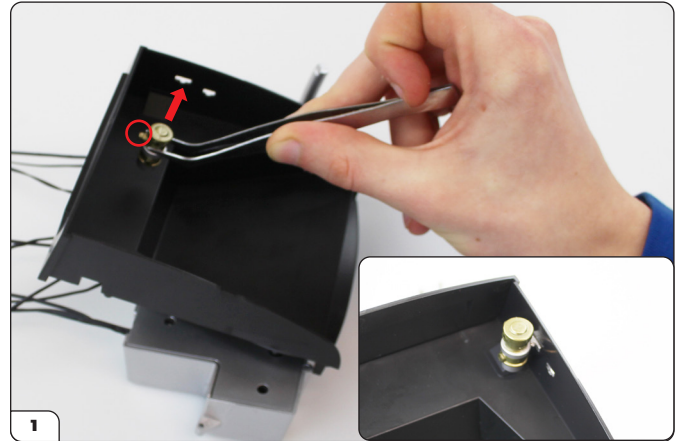
Stage 59: Fuel Pumps, Pipes, Trunk Hinge & Lock

STEP 1

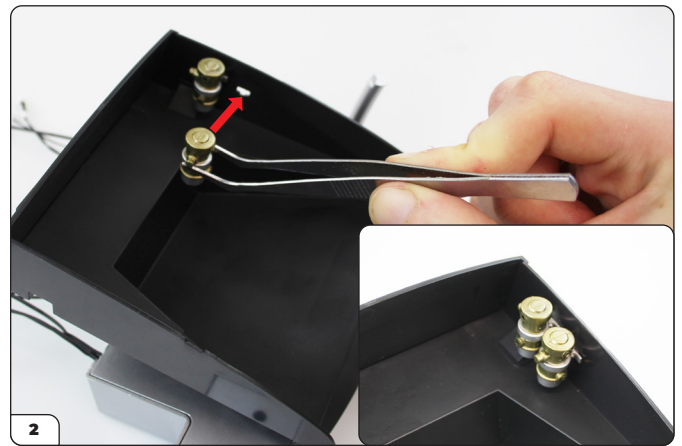
ATTACH THE FUEL PUMPS AND PIPES

Study the Fuel Pumps carefully as they are slightly different: Fuel Pump 1 has a slightly wider fixing tab and a projection facing the trunk rear wall.

Align Fuel Pump 1 with the slot in the side wall of the trunk. Push firmly into place.



Repeat with Fuel Pump 2 in the second slot.



Push the blue peg on Fuel Pump Pipe 1 into the upper hole on Fuel Pump 1.



Push the blue peg on Fuel Pump Pipe 2 into the lower hole on Fuel Pump 1.



Stage 59: Fuel Pumps, Pipes, Trunk Hinge & Lock

Push the blue peg on Fuel Pump Pipe 3 into the upper side hole on Fuel Pump 2. Push the free end of Pipe 3 into the end of Fuel Pump Pipe 1.
Note: Pipe 3 has a 1 engraved on it, and pipe 4 has a 2 engraved on it.

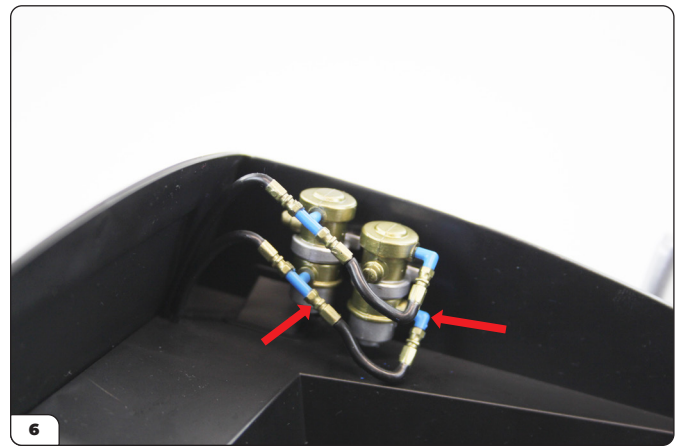


Push the blue peg on Fuel Pump Pipe 4 into the lower side hole on Fuel Pump 2. Push the free end of Pipe 4 into the end of Fuel Pump Pipe 2.



ADVICE FROM THE EXPERTS

Try fitting the black end of pipes 3 & 4 before fitting the blue end if you are struggling to fit them



STEP 2

FIT THE TRUNK LOCK

Take the Trunk Lock and fit it into the recess on the Trunk Main Part. Fix in place with a TYPE OP10 screw.



Stage 59: Fuel Pumps, Pipes, Trunk Hinge & Lock

STEP 3

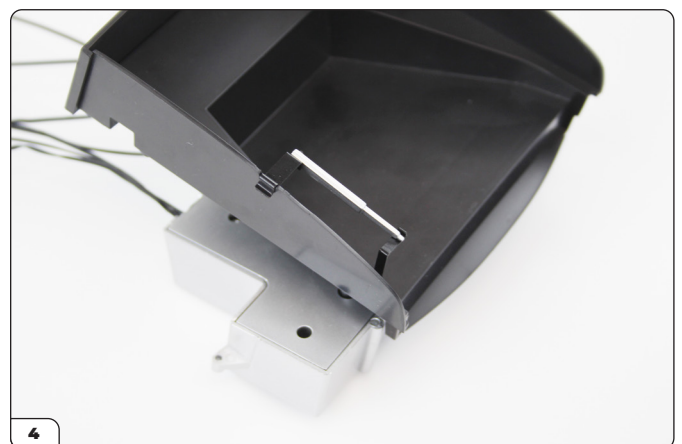
ASSEMBLE THE TRUNK HOLDER

Align the screw holes on the Trunk Hinge and Trunk Support and fix together with a TYPE OP10 screw. Tighten the OP10 screw so the Trunk Support can rotate with a little friction.



ATTACH THE TRUNK SUPPORT

Rest the Trunk Hinge in the notch along the edge of the Main Trunk. Then rest the narrow end of the Trunk Support in the Trunk Lock.



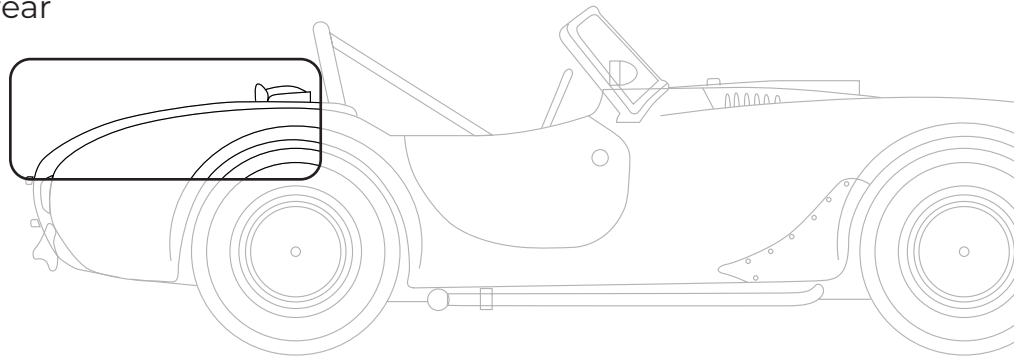
Stage 59: Fuel Pumps, Pipes, Trunk Hinge & Lock

Stage 59 complete!



Stage 60: Rear Fender Part & Cable Holder

Now you'll attach the assembly from stage 59 to part of the rear fender.



STAGE 60 PARTS LIST

Name	Quantity
Rear Fender Inner Part	1
Electrical Cable Holder	1
Screws TYPE OP08	2
Screws TYPE OP03	6



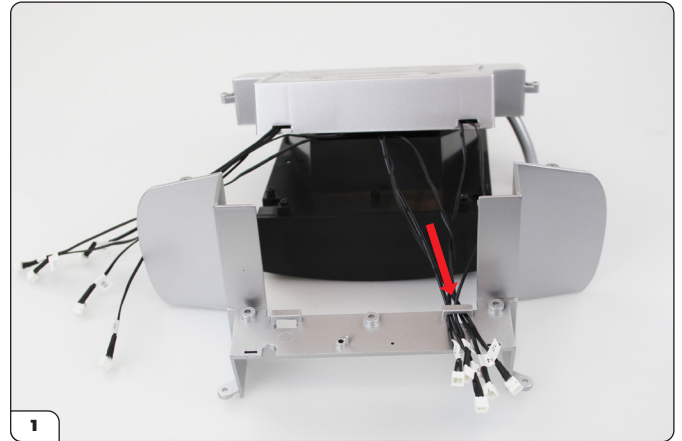
Stage 60: Rear Fender Part & Cable Holder

STEP 1

ARRANGE THE CABLES

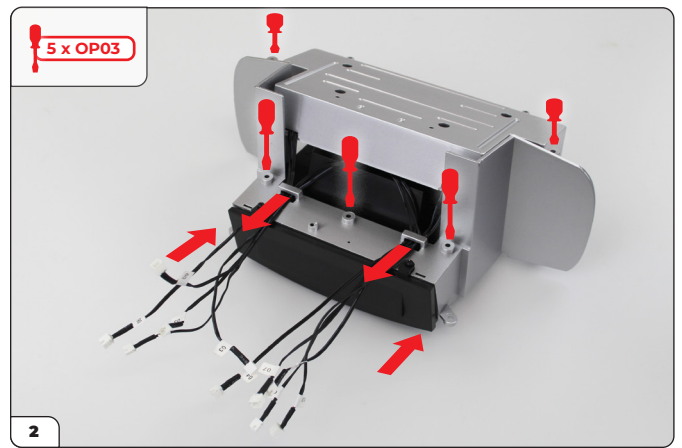
Sit the Rear Fender Inner Part on your work surface next to the fuel tank assembly as shown so that you can thread the electrical wires through the two square holes.

First, thread cables 02, 10, 09, 01 & 04, one at a time, through the right hand hole,

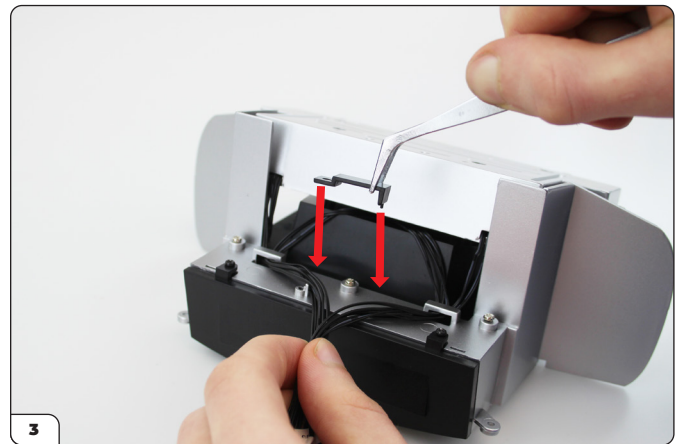


Then thread cables 07, 08, 03, 05 & 06 through the left hand hole.

Once the cables are in place, push the Rear Fender Part snugly against the trunk, gently pulling the cables taught. Secure the Rear Fender in place using 5 x OP03 screws.

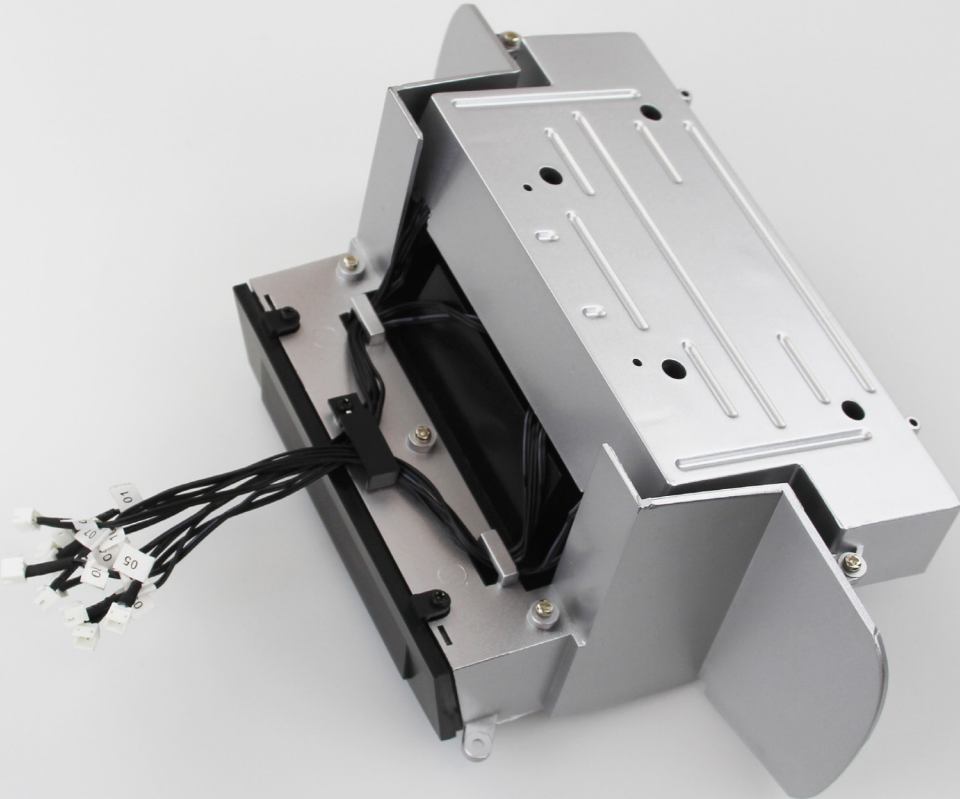


Gather all ten cables together and guide them to sit between the two central holes as shown. Lower the Electrical Wire Holder over the raised screw hole and push the peg into the other tiny hole to hold the wires. Secure the Wire Holder in place using an OP08 screw.



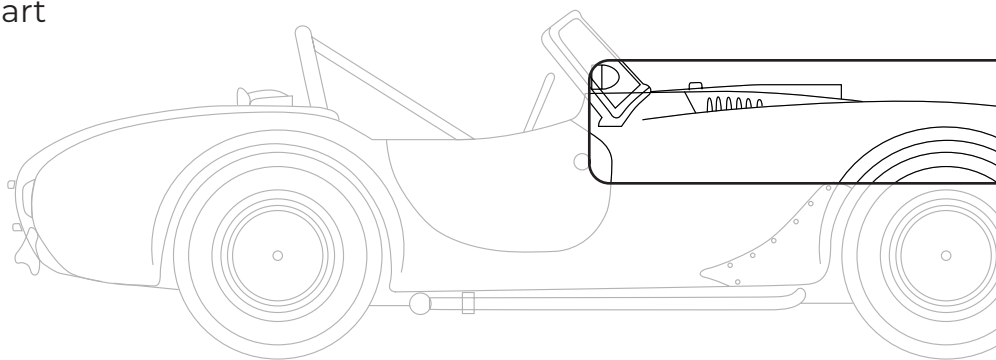
Stage 60: Rear Fender Part & Cable Holder

Stage 60 complete!



Stage 61: Firewall

The firewall will be assembled in the next stage. Unpack your part and move on to stage 62.



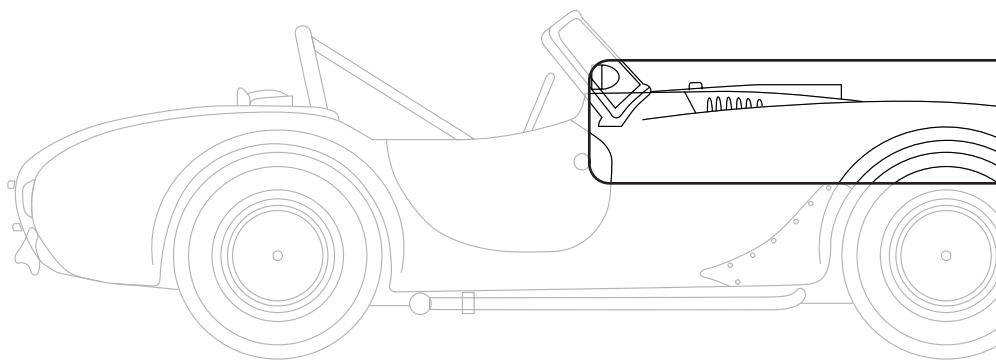
STAGE 61 PARTS LIST

Name	Quantity
Firewall	1



Stage 62: Speaker & Speaker Support

You will now attach the speaker to the firewall.



STAGE 62 PARTS LIST

Name	Quantity
Speaker	1
Speaker Support	1
Screws TYPE OP08	3



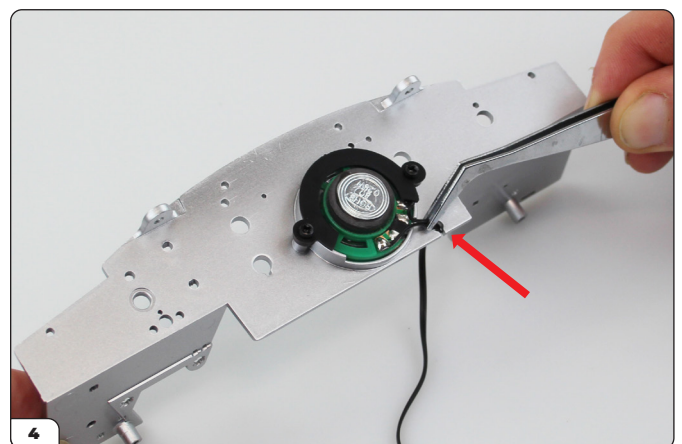
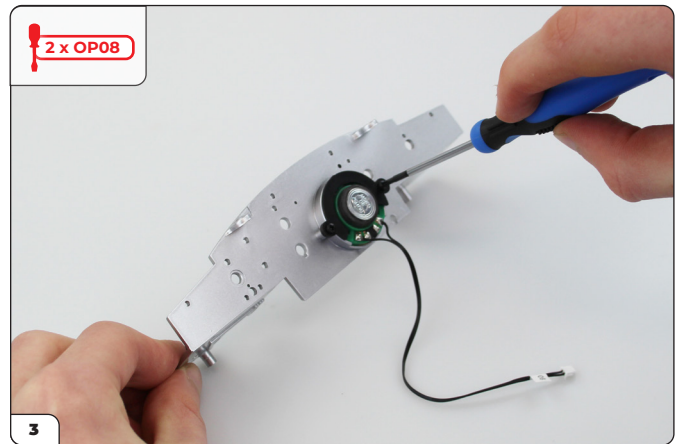
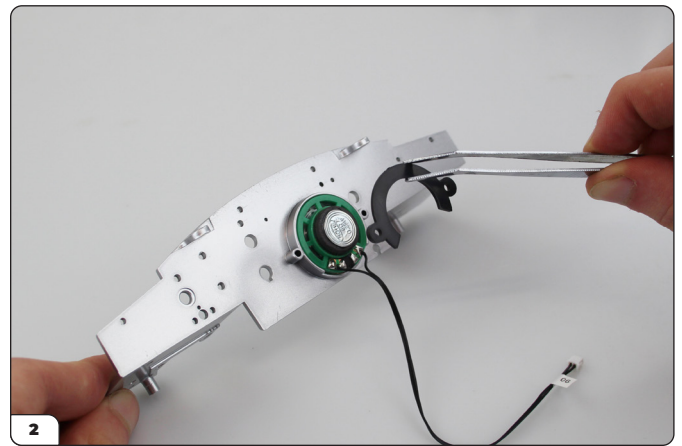
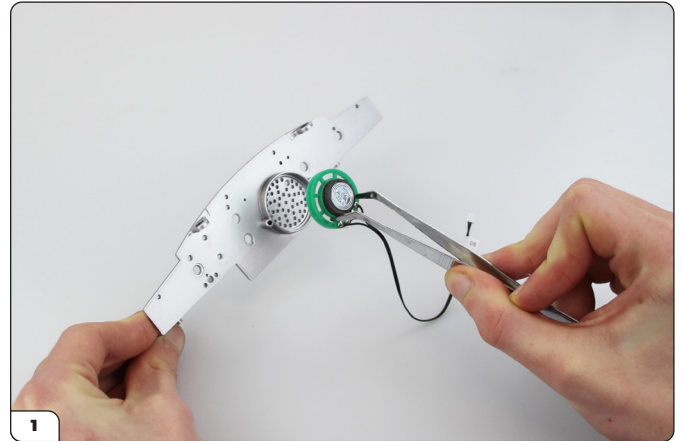
Stage 62: Speaker & Speaker Support

STEP 1

ATTACH THE SPEAKER

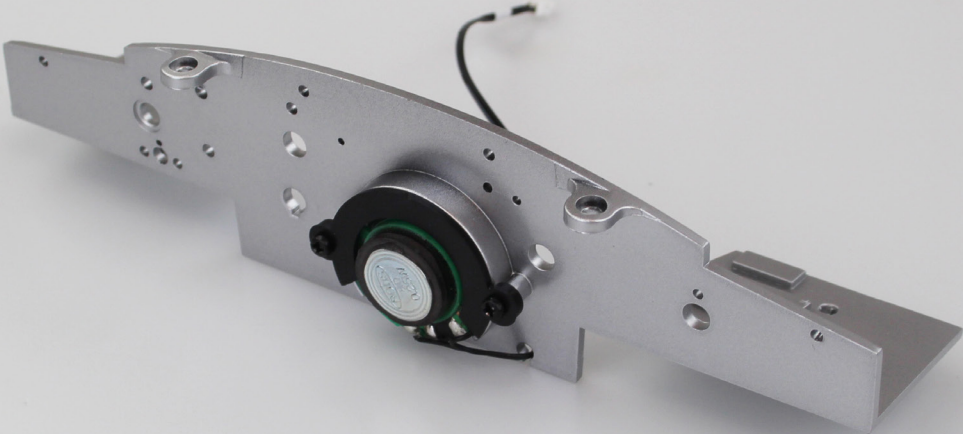
Take the Firewall from stage 61 and place the Speaker within the circular recess. Place the Speaker Support, flat side out, on top and fix in place using 2 x TYPE OP08 screws.

Direct the cable through the notch as shown in picture 4.



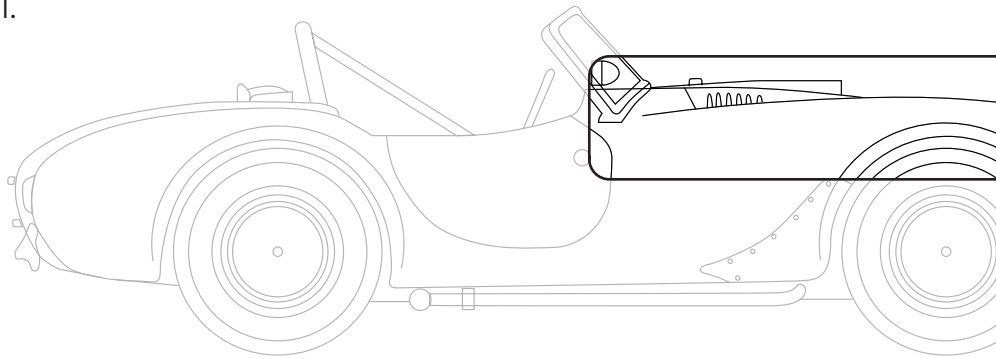
Stage 62: Speaker & Speaker Support

Stage 62 complete!



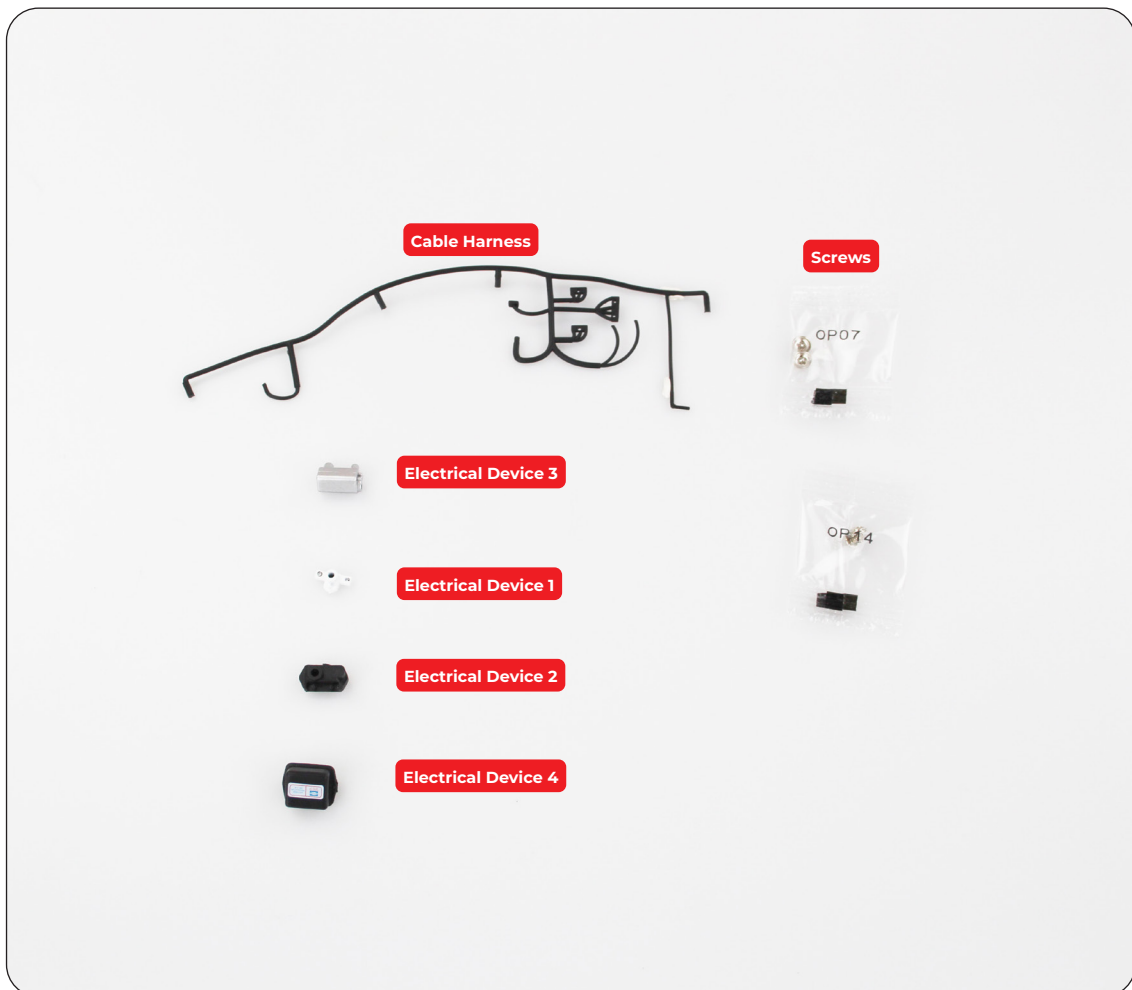
Stage 63: Cable Harness & Electrical Devices

In this next stage you will add electrical details to the firewall.



STAGE 63 PARTS LIST

Name	Quantity
Cable Harness	1
Electrical Device 1	1
Electrical Device 2	1
Electrical Device 3	1
Electrical Device 4	1
Screws TYPE OP07	2
Screws TYPE OP14	2

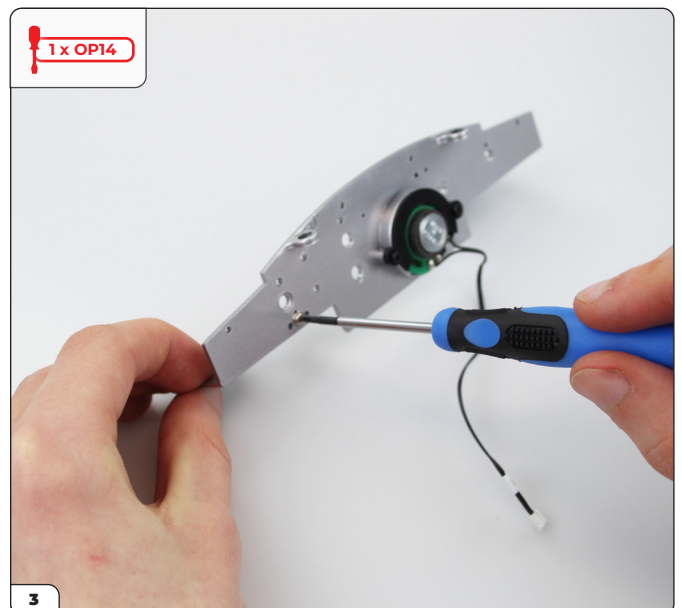
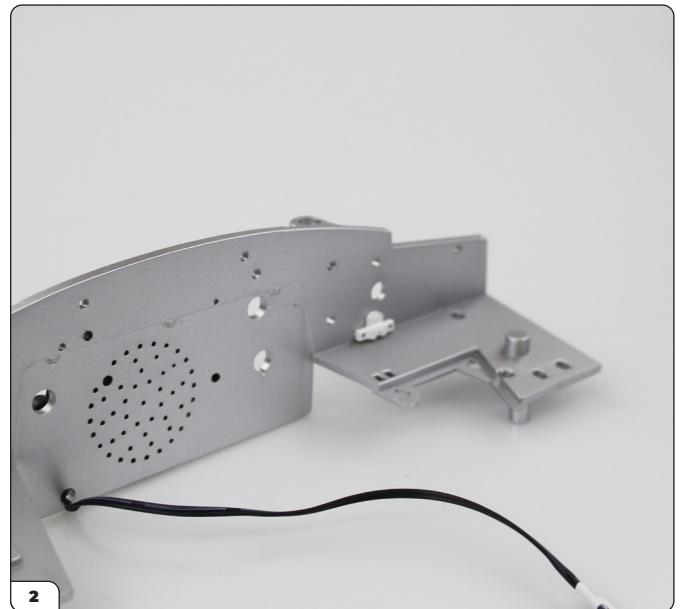
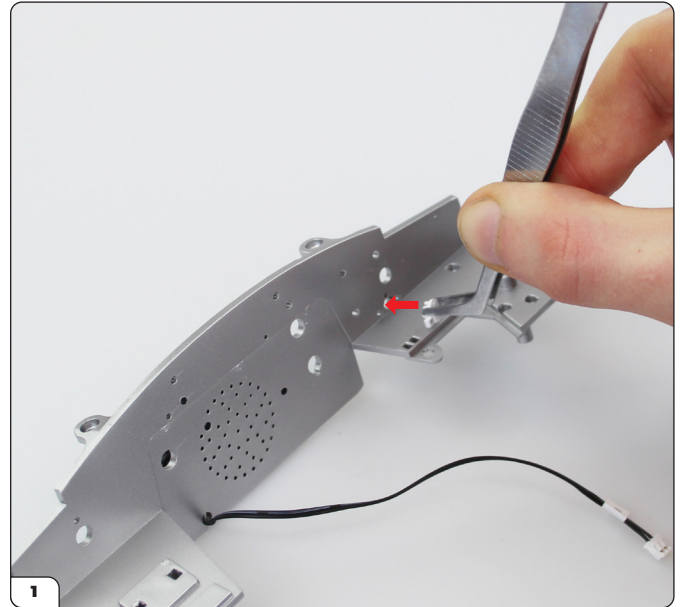


Stage 63: Cable Harness & Electrical Devices

STEP 1

ATTACH DEVICE 1

With the speaker facing away from you, align Electrical Device 1 with the hole shown. Push the device into position and secure from the reverse side using a TYPE OP14 screw.

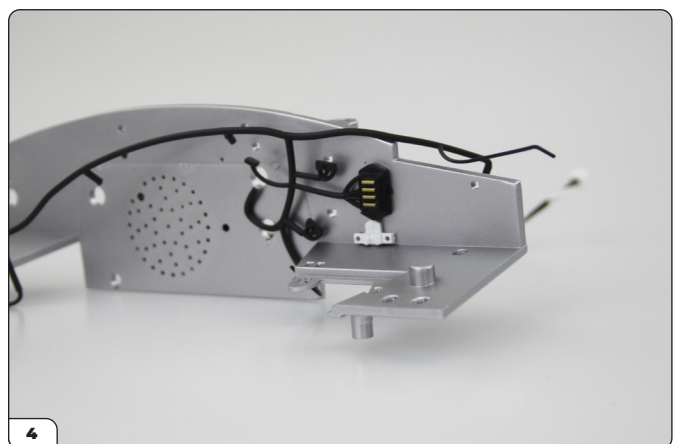
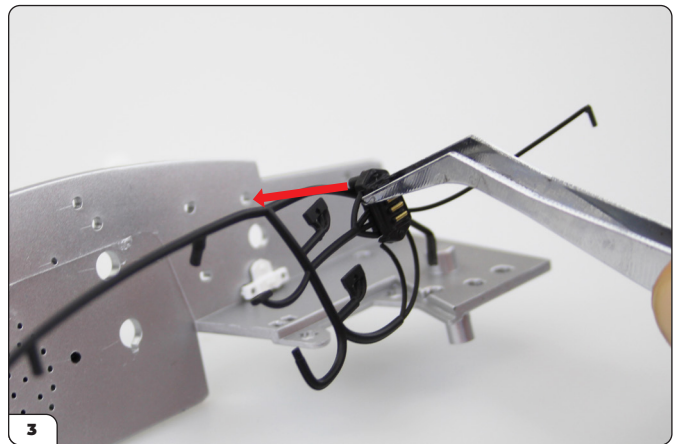
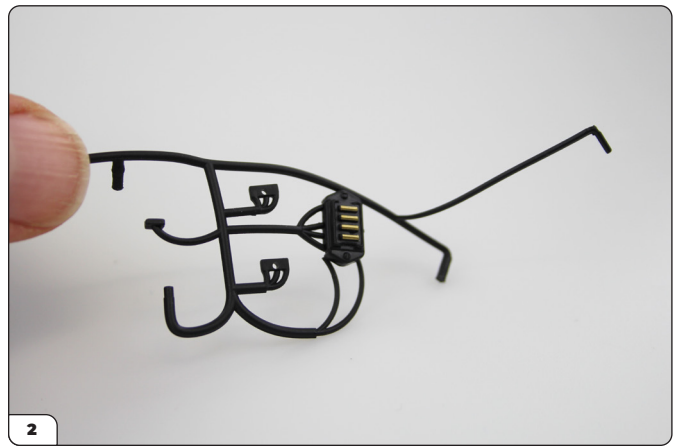
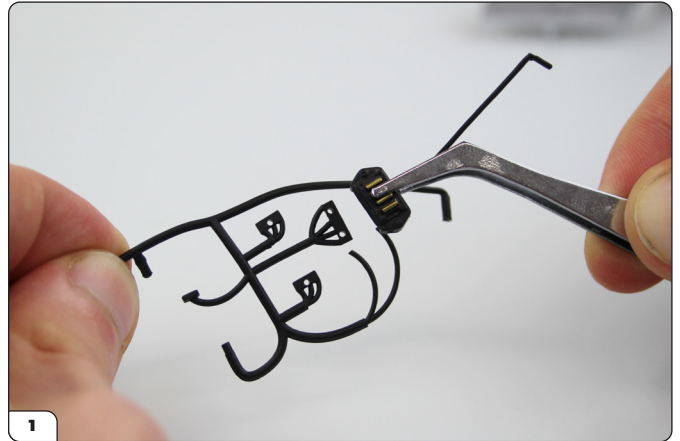


Stage 63: Cable Harness & Electrical Devices

STEP 2

ATTACH DEVICE 2

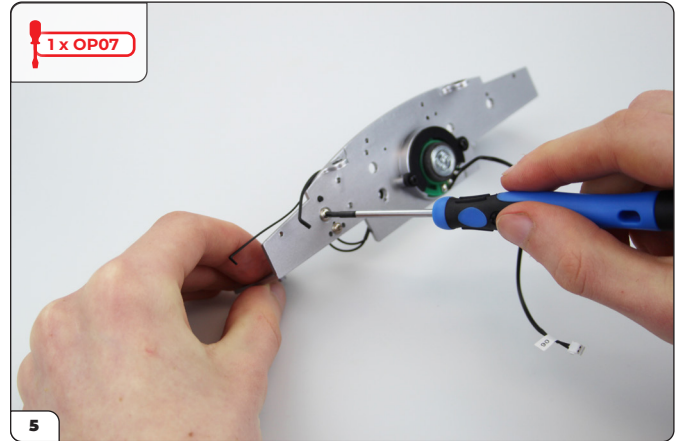
Take the Cable Harness and press Electrical Device 2 onto the two tiny holes shown (picture 2). Then push Device 2 into position on the firewall, just above Device 1, to anchor the harness to the firewall (picture 4).



Stage 63: Cable Harness & Electrical Devices

CONTINUED...

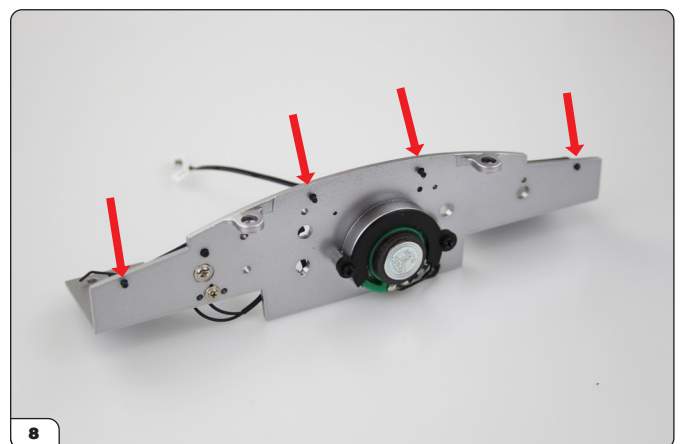
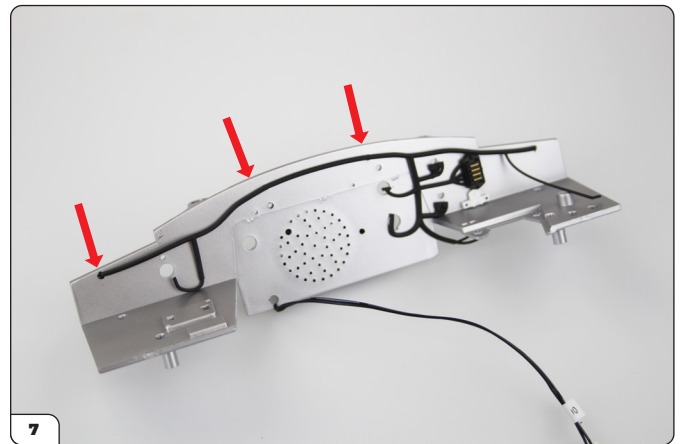
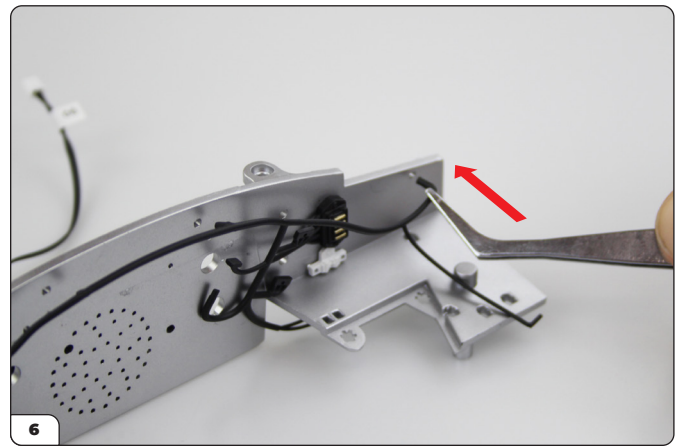
Fix Device 2 in place from the reverse using a TYPE OP07 screw.



FIX THE CABLE HARNESS IN PLACE

Using tweezers, push the four lugs along the length of the harness into the corresponding holes on the top edge of the firewall.

Picture 8 shows the firewall with the harness lugs projecting through from the reverse side.



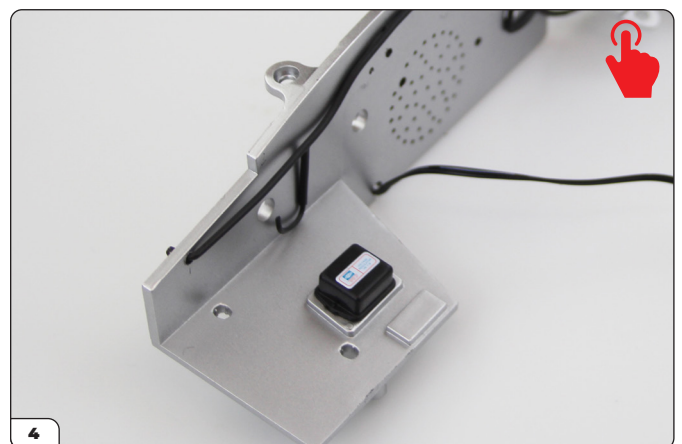
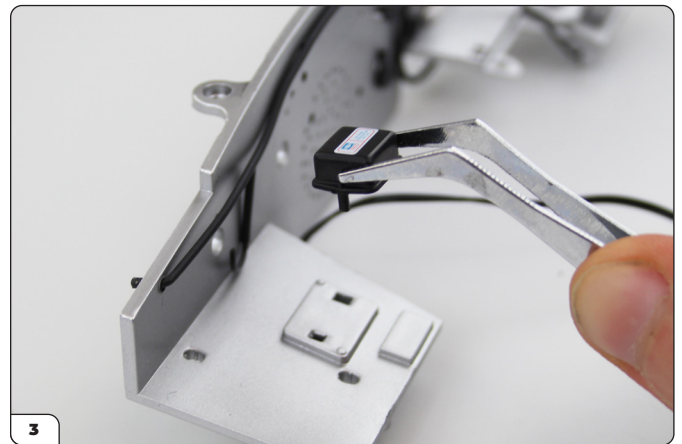
Stage 63: Cable Harness & Electrical Devices

STEP 3

ATTACH DEVICES 3 & 4

Take Device 3 and press the two lugs into the corresponding holes on the firewall (picture 2). Then take Device 4 and push its two lugs into the holes on the opposite end of the firewall. Push into place.

Note: Devices 3 & 4 both have one peg that is slightly bigger in size so they only fit one way round.



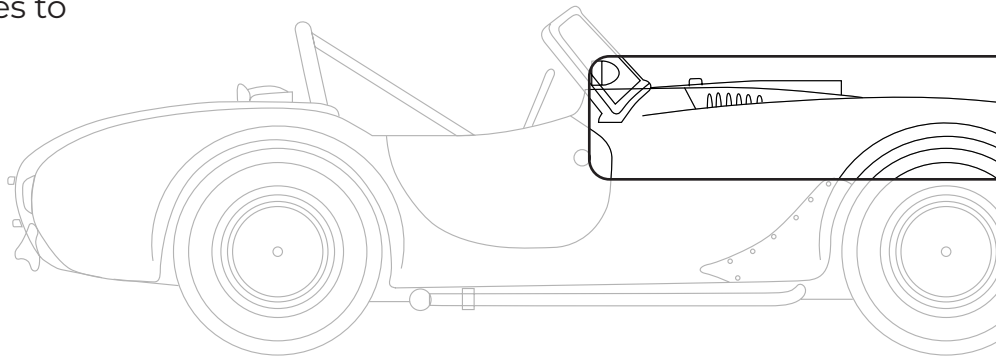
Stage 63: Cable Harness & Electrical Devices

Stage 63 complete!



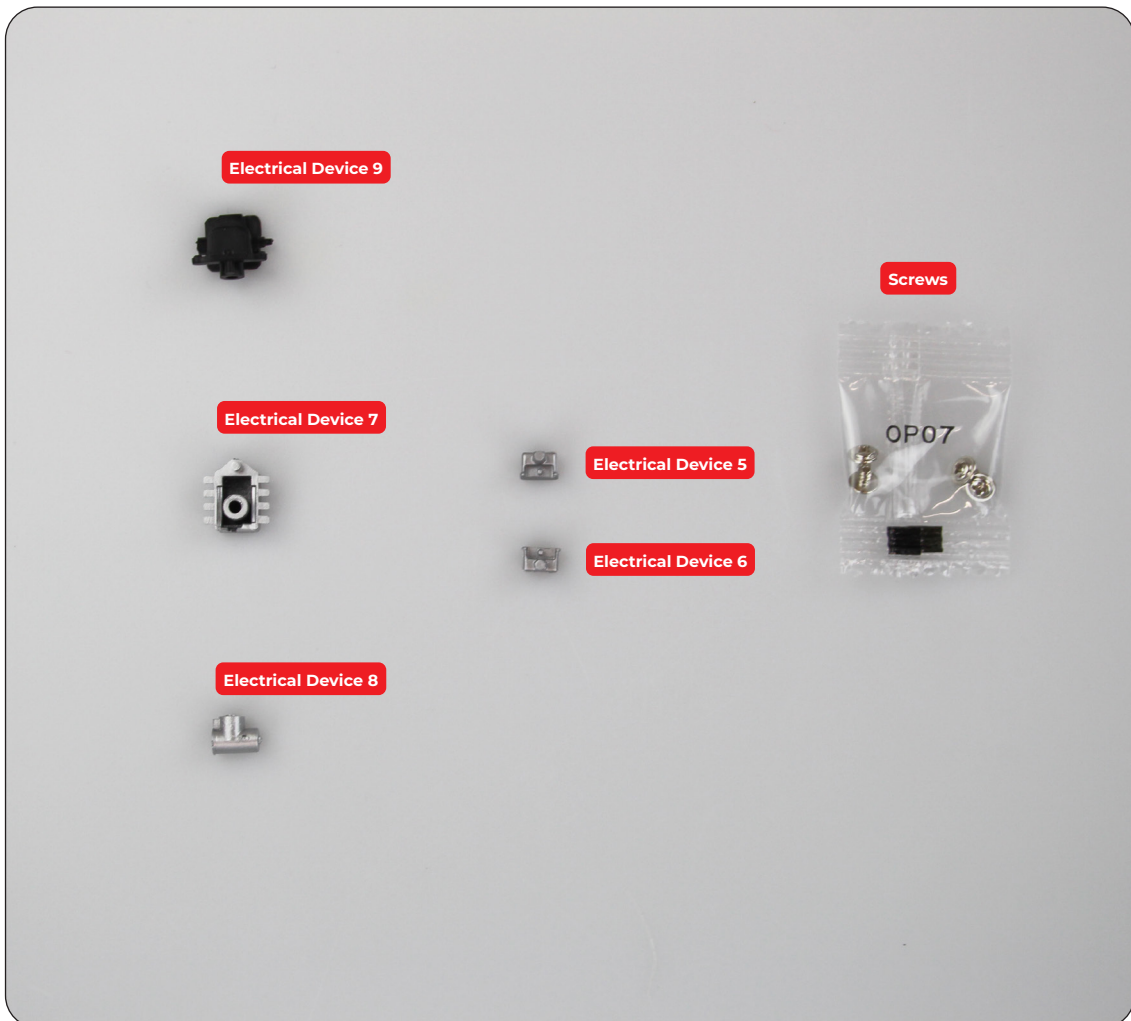
Stage 64: More Electrical Devices

In the final stage of Pack 8, you will add five more electrical devices to the firewall.



STAGE 64 PARTS LIST

Name	Quantity
Electrical Device 5	1
Electrical Device 6	1
Electrical Device 7	1
Electrical Device 8	1
Electrical Device 9	1
Screws TYPE OP07	4

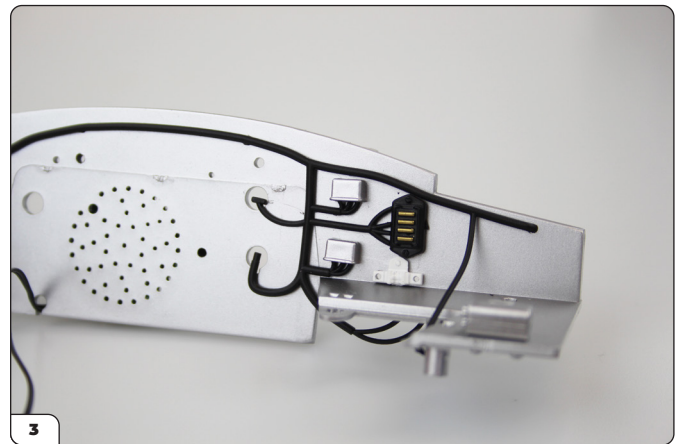
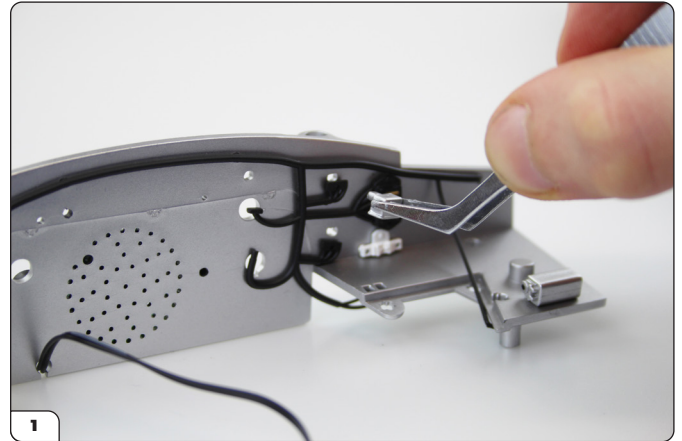


Stage 64: More Electrical Devices

STEP 1

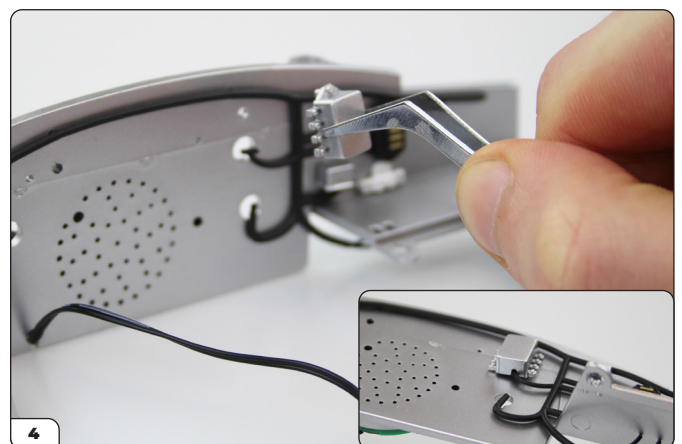
ATTACH DEVICES 5 & 6

Take Device 5 and press it through the upper hole on the harness before pushing it onto the firewall (picture 2). Repeat with Device 6, pressing it into the lower hole (picture 3).



ATTACH DEVICE 7

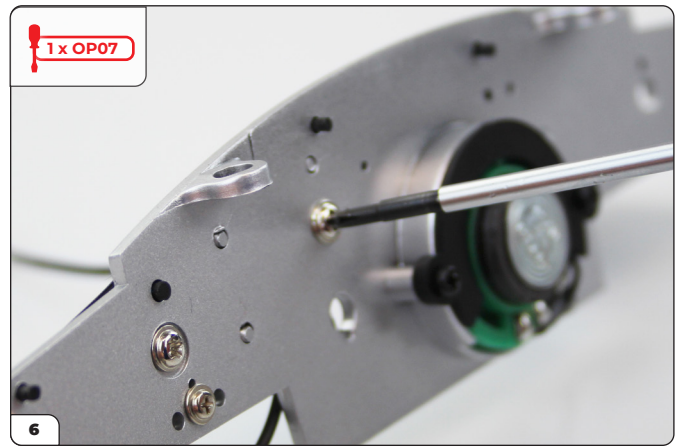
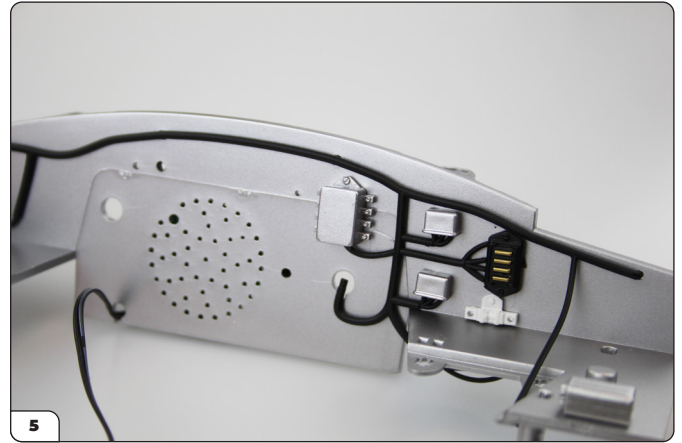
Take Device 7 and hook the end of the harness cable under the bottom edge so it is anchored in the notch (picture 4 inset).



Stage 64: More Electrical Devices

CONTINUED...

Push Device 7 into the firewall and secure from the reverse side using an OP07 screw.



ATTACH DEVICE 8

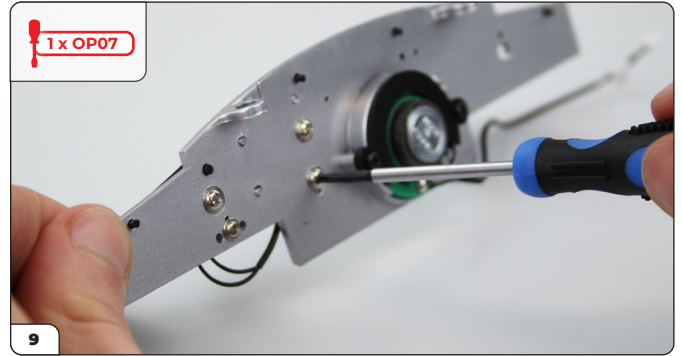
Push Device 8 into its hole on the firewall. Push the end of the harness cable into the bottom of Device 8 (picture 8 inset).



Stage 64: More Electrical Devices

CONTINUED...

Secure in place from the reverse using a TYPE OP07 screw.



ATTACH DEVICE 9

Push Device 9 into its hole on the firewall. Push the cable into the bottom and secure from the reverse using a TYPE OP07 screw.



ATTACH THE CABLES TO DEVICES 1 & 3

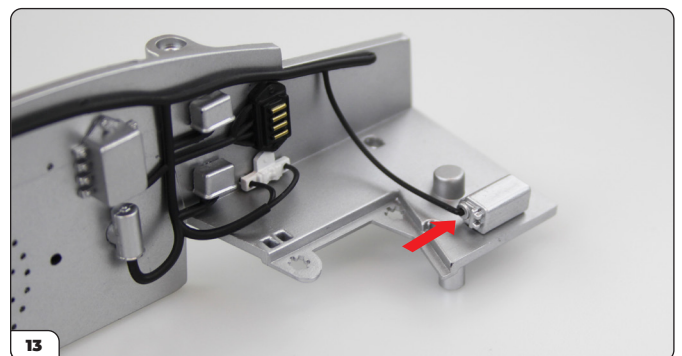
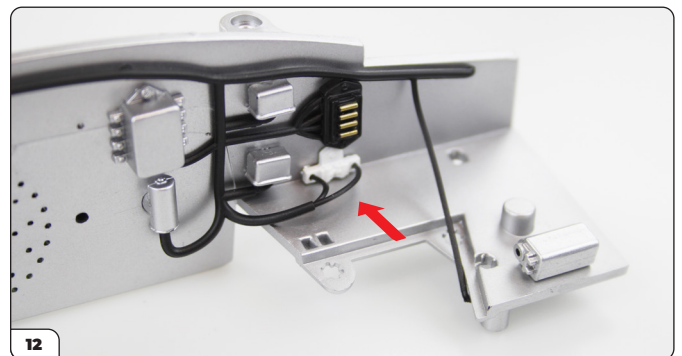
Take the two free ends of cable and push them into the holes of Device 1 (picture 12).

Take the long length of cable at the end of the harness and push it into the bottom of Device 3.



ADVICE FROM THE EXPERTS

You can use a tiny drop of superglue to fix the cable ends if necessary. Apply a little to the cable end with a cocktail stick and insert it with a pair of tweezers.



Stage 64: More Electrical Devices

Stage 64 complete!

