

1967

SHELBY GT500

**SUPER
SNAKE**

1:8 SCALE



Pack 06 | Build Instructions

Your Shelby GT500 Super Snake is a finely detailed model replicating every aspect of the original car. From the paint color to the smallest interior details, every piece is precisely reproduced.

In your sixth model pack, you will assemble:

STAGE 39: INTERIOR DETAILS

Front and Rear Floor Mats and Fire Extinguisher

STAGE 40: REAR SEAT SUPPORT

STAGE 41: INTERIOR REAR PLATFORM

STAGE 42: LEFT REAR INTERIOR PANEL,
Interior panel, Decorative Accessory and
Rear Seat Release Lever

**STAGE 43: LEFT REAR UPPER INTERIOR
PANEL AND VENTILATION GRILLE**

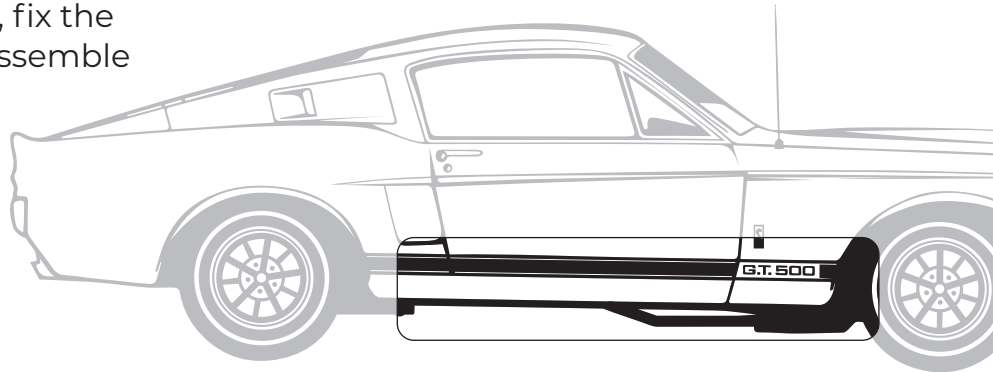
**STAGE 44: INTERIOR TRUNK
PARTITION PANEL**

**STAGE 45: REAR SEAT FOLDING PANEL
AND HINGE**

STAGE 46: REAR SEAT BACKREST PANEL

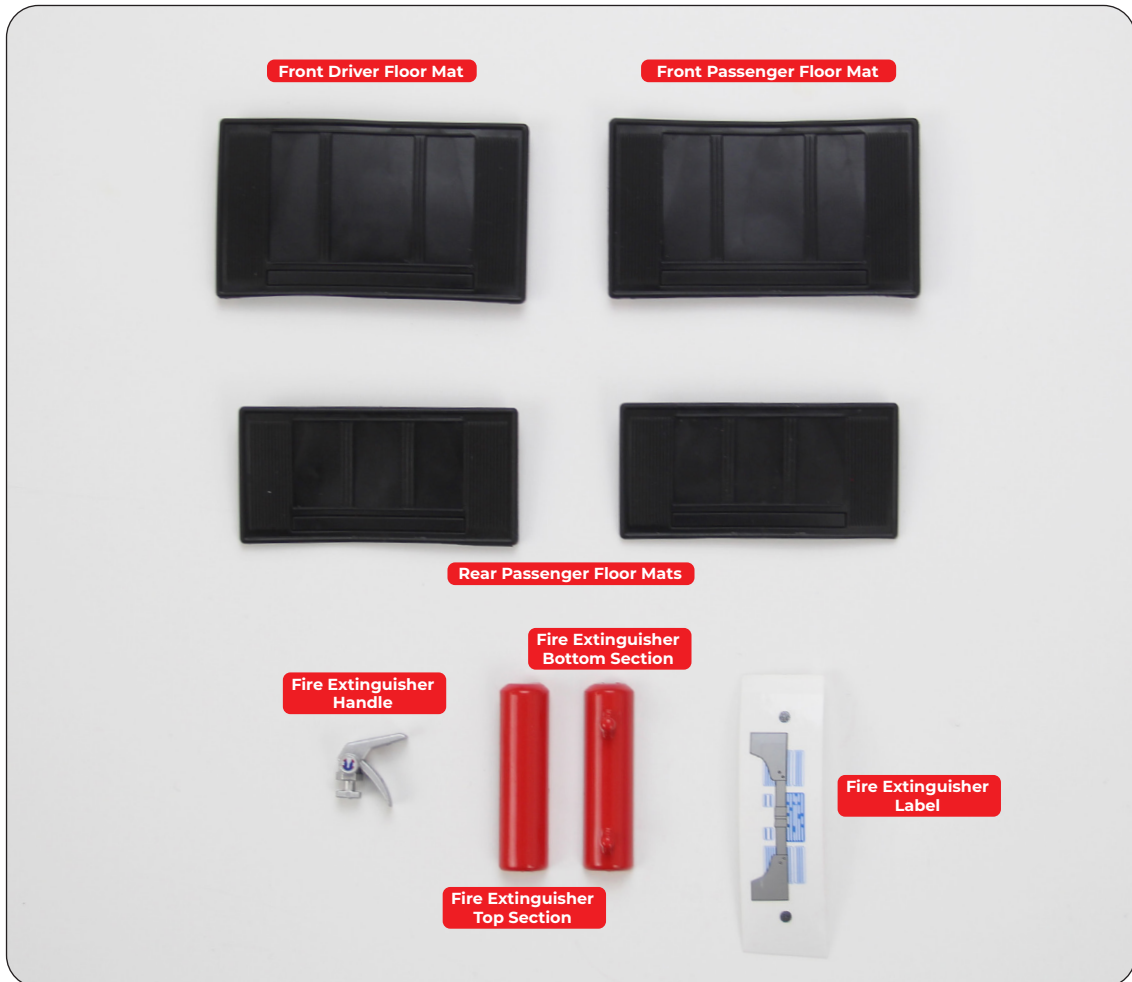
Stage 39: Interior Details

In the first stage of Pack 6, you will add the Front and Rear Floor Mats, fix the front seats into position and assemble the Fire Extinguisher.



STAGE 39 PARTS LIST

Name	Quantity
Front Driver Floor Mat	1
Front Passenger Floor Mat	1
Rear Passenger Floor Mats	2
Fire Extinguisher Handle	1
Fire Extinguisher Top Section	1
Fire Extinguisher Bottom Section	1
Fire Extinguisher Label	1



Stage 39: Interior Details

STEP 1

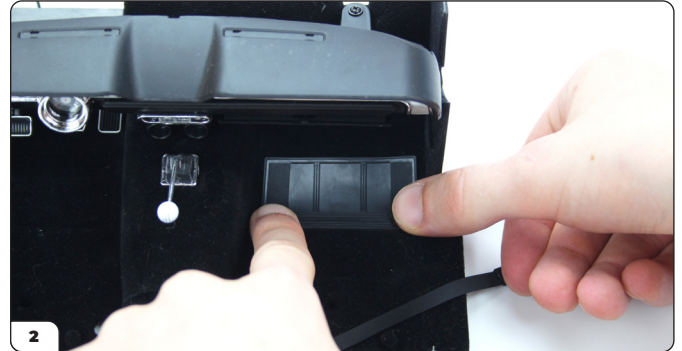
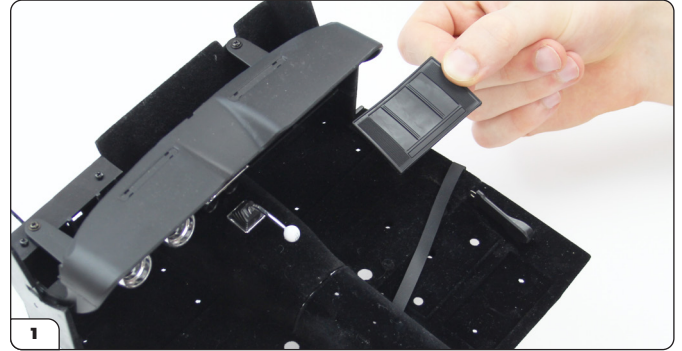
ATTACH THE FRONT FLOOR MATS

Take one of the Front Floor Mats (they are both identical) and orient it as shown in the picture. Align the lugs of the Mat with the holes in the floor on the passenger side, and press the pieces firmly together to fit. Repeat with the Mat on the driver's side.



ADVICE FROM THE EXPERTS

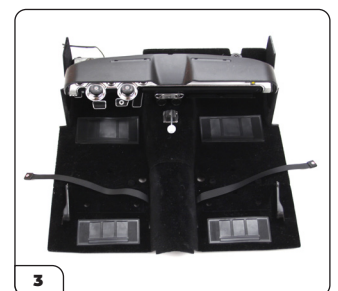
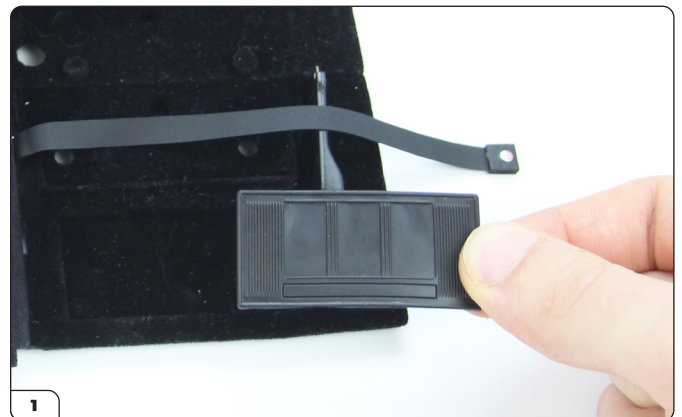
If the Floor Mats are difficult to fit, try gently pushing your Agora Models screwdriver through the holes on the floor. Don't use a bigger screwdriver than this as it may make the fit too loose.



STEP 2

ATTACH THE REAR FLOOR MATS

Now align one of the Rear Floor Mats on the rear floor as shown. Push the lugs on the mat into the holes in the rear floor. Repeat on the opposite side.

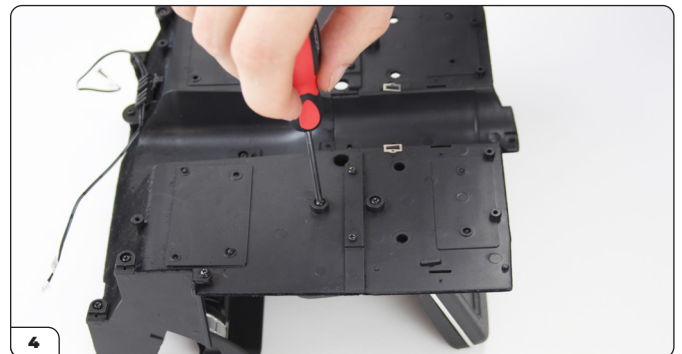
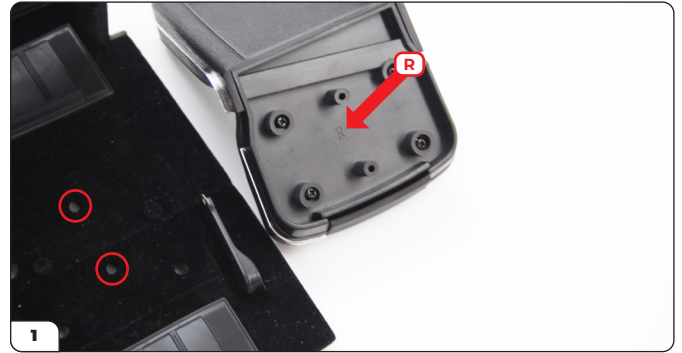


Stage 39: Interior Details

STEP 3

FIX THE FRONT SEATS INTO POSITION

Take the front passenger seat from Stage 11 (identified by the letter 'R' underneath) and align the 2 lugs on the seat with the holes on the floor. Place into position and check it is correctly fitted before fixing in place on the reverse side with 2 x TYPE MP01 screws left over from your previous Pack (Stage 38). Repeat this process for the Driver's Seat. If you didn't keep the screws from Stage 38, you can use the spares supplied for Stages 40 and 41.



Stage 39: Interior Details

STEP 4

POSITION THE SEAT BELTS

Carefully position the seat belts by sliding the open end of the Seat Belt over the Seat Belt Fastener. The two pieces rest in place so they can be 'undone' easily.



STEP 5

ASSEMBLE THE FIRE EXTINGUISHER

Place the handle on the bottom section. Check the dial on the handle is facing upwards. Align the lugs on the top section with the holes on the bottom section and squeeze the parts together. Carefully remove the adhesive Fire Extinguisher label from its backing and position on the fire extinguisher as shown.

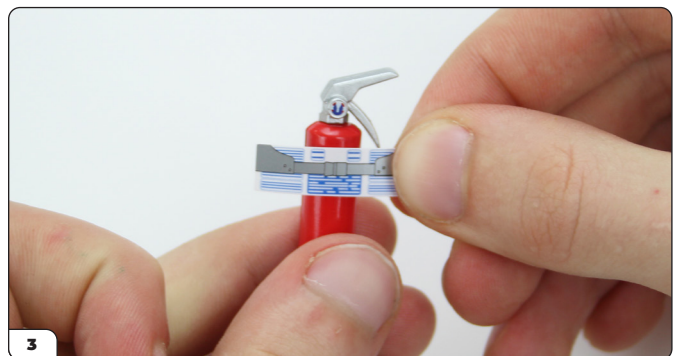


ADVICE FROM THE EXPERTS

Tip - push the top lug in and then the bottom lug. Some pressure is required to fit the lugs together. You will hear a click when they're fitted correctly.

Tip - remove any grease and finger prints with a cloth before applying the sticker to ensure the sticker sticks well.

If the lugs on the Fire Extinguisher are too tight to fit into the opposite holes, check that there isn't excess paint on the lugs. This can easily be fixed by gently scraping with a sharp blade.



Stage 39: Interior Details

STEP 6

ATTACH THE FIRE EXTINGUISHER

Align the lugs on the outside of the Fire Extinguisher with the holes on the front floor, between the front seats, and press into position.

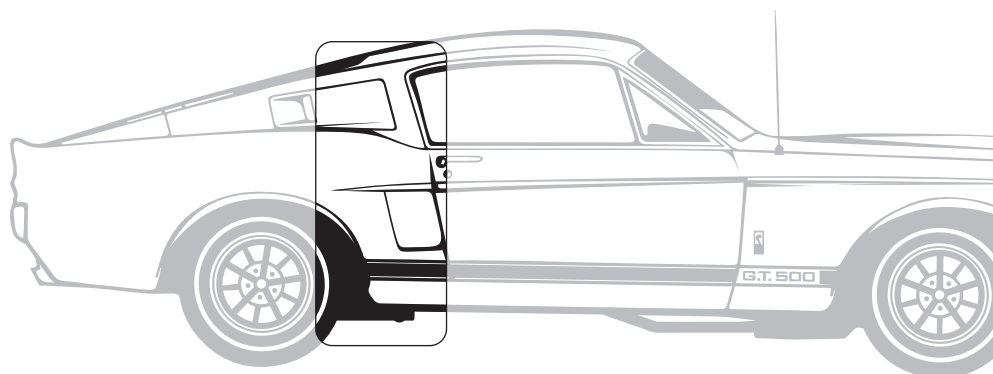


Stage 39 complete!



Stage 40: Rear Seat Support

You will now start to assemble the rear interior sections.



STAGE 40 PARTS LIST

Name	Quantity
Rear Seat Support	1
Screws TYPE MP01	5 [inc. 1 spare]

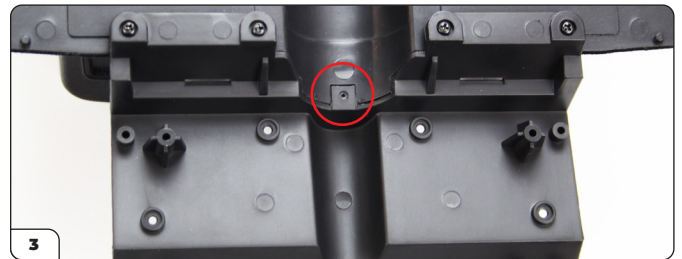
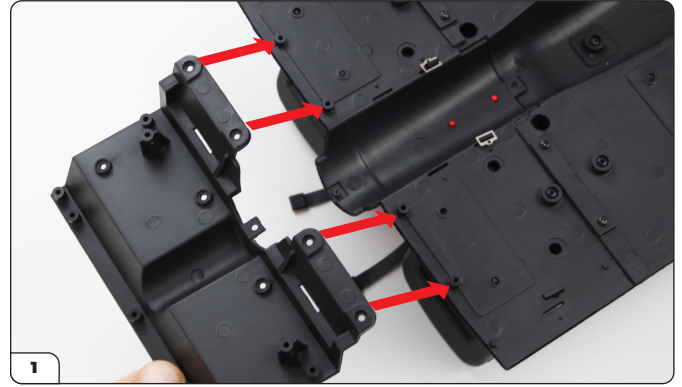


Stage 40: Rear Seat Support

STEP 1

ATTACH THE REAR SEAT SUPPORT TO THE REAR FLOOR ASSEMBLY

Take the floor assembly and place upside down on your worktable. Orient the Rear Seat Support as shown in the photo, aligning the holes on the Rear Seat Support with the lugs on the floor. Screw loosely into place using 4 x TYPE MP01 screws, starting with the central screws, followed by the outer screws. Once all screws are loosely in, moderately tighten them. Note: the central part of the support has a small stud designed to fit into the floor. Press lightly to fit the 2 pieces correctly.

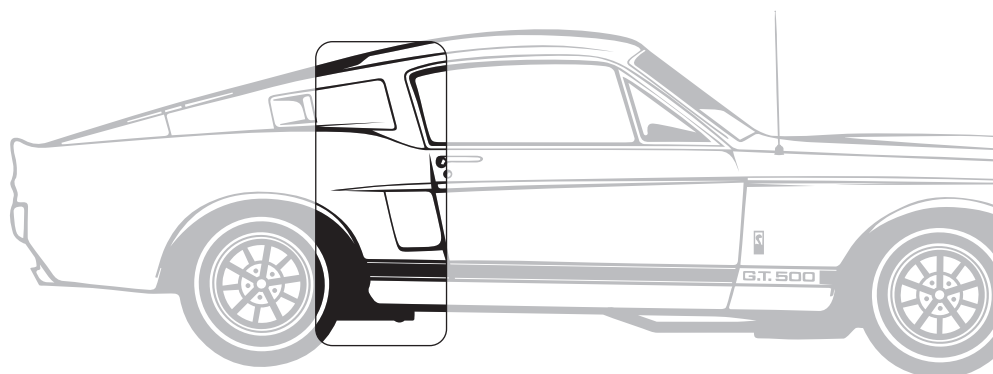


Stage 40 complete!



Stage 41: Interior Rear Platform

You will continue to build the interior rear sections.



STAGE 40 PARTS LIST

Name	Quantity
Interior Rear Platform	1
Screws TYPE MP01	4 [inc. 1 spare]

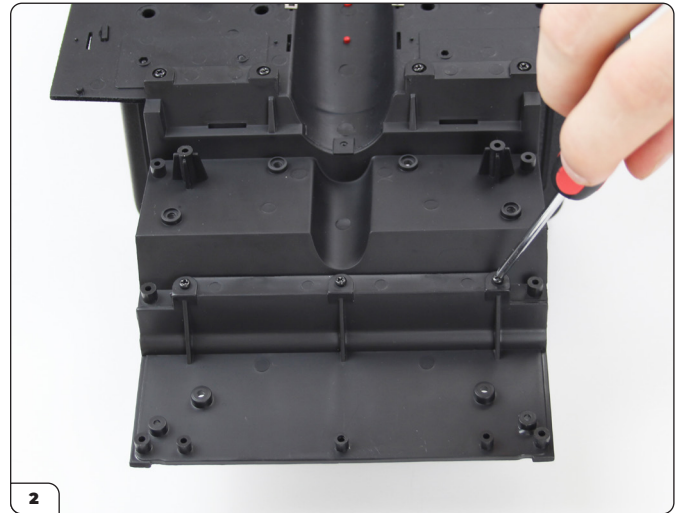
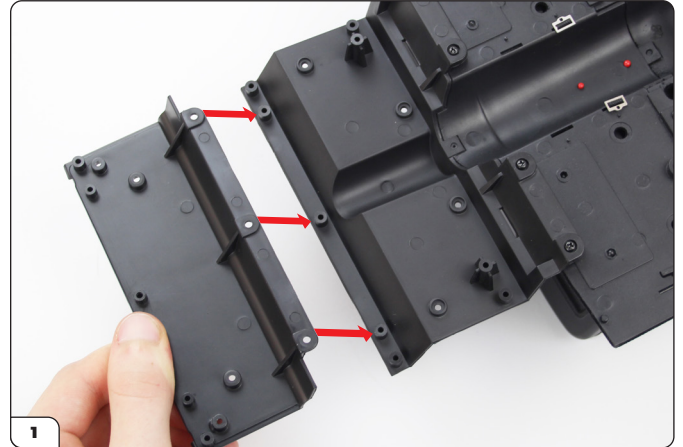


Stage 41: Interior Rear Platform

STEP 1

ATTACH THE INTERIOR REAR PLATFORM TO THE REAR SEAT SUPPORT

Place the floor assembly upside down on your worktable. Align the holes on the Interior Rear Platform with the lugs on the Rear Seat Support as shown in the photo. Secure together using 3 x TYPE MP01 screws, starting with the central screw, and then the outer two screws.

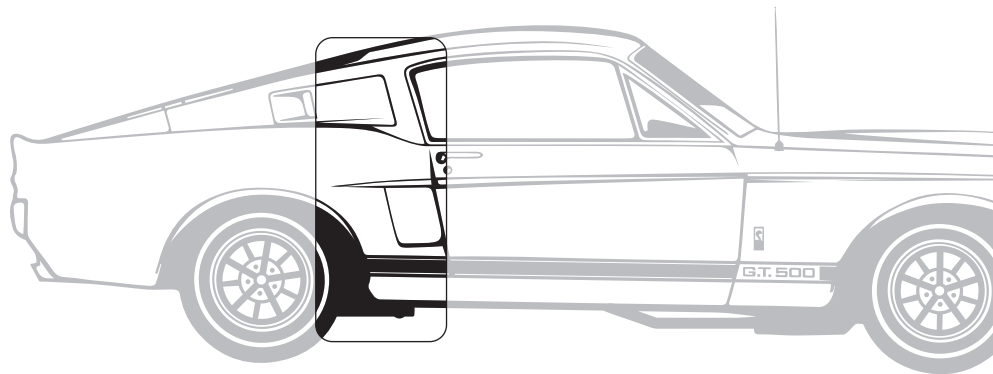


Stage 41 complete!



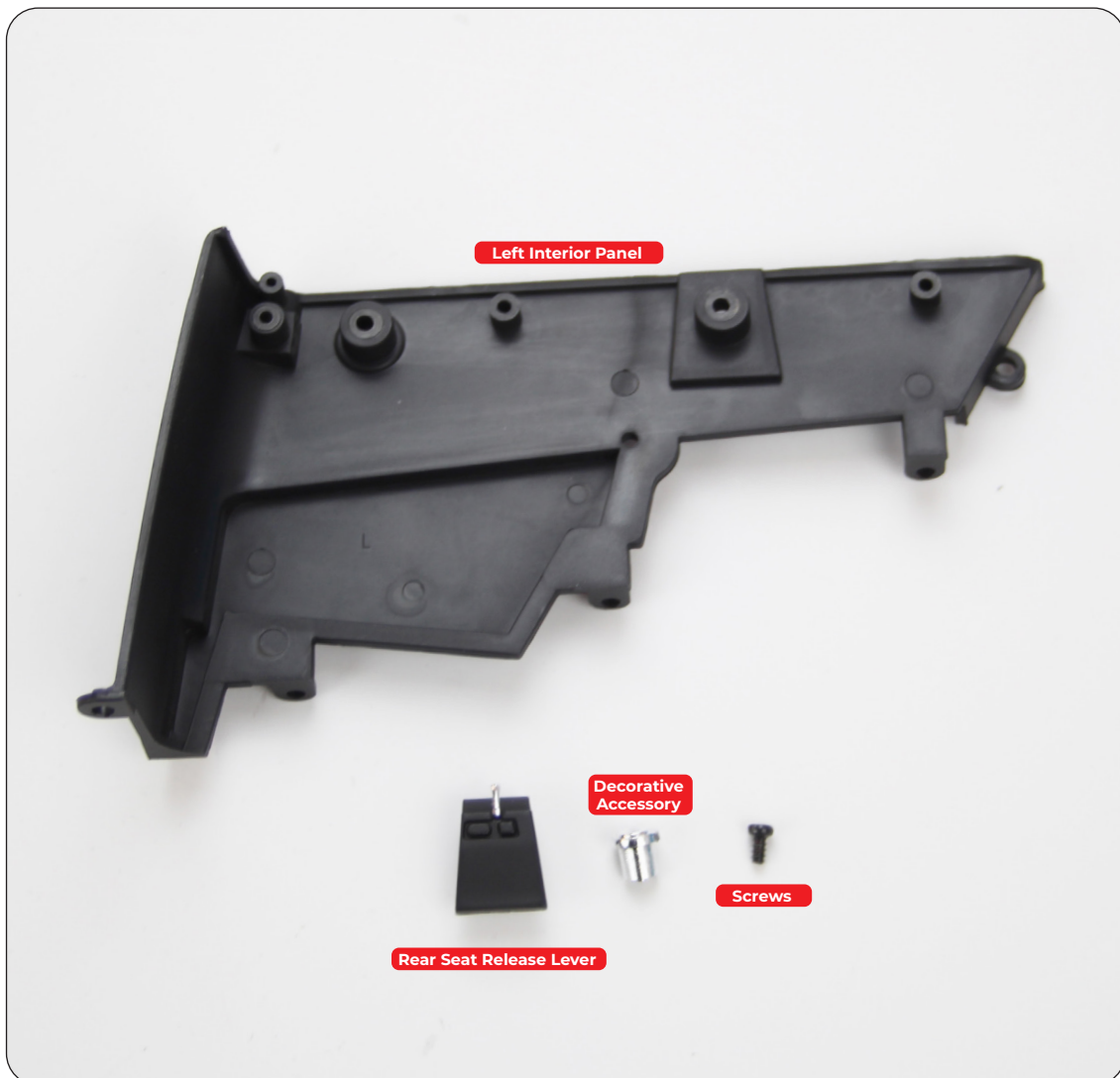
Stage 42: Left Rear Interior Panel

You will continue building the left rear interior sections.



STAGE 42 PARTS LIST

Name	Quantity
Left Interior Panel	1
Rear Seat Release Lever	1
Decorative Accessory	1
Screws TYPE MP01	6 [inc. 1 spare]



Stage 42: Left Rear Interior Panel

STEP 1

ATTACH THE DECORATIVE ACCESSORY TO THE INTERIOR PANEL

Align the Decorative Accessory with the hole on the Left Rear Interior Panel. Note that the accessory and the hole have a straight edge. Push the accessory into place, and fix from the reverse side using an TYPE MP01 screw.

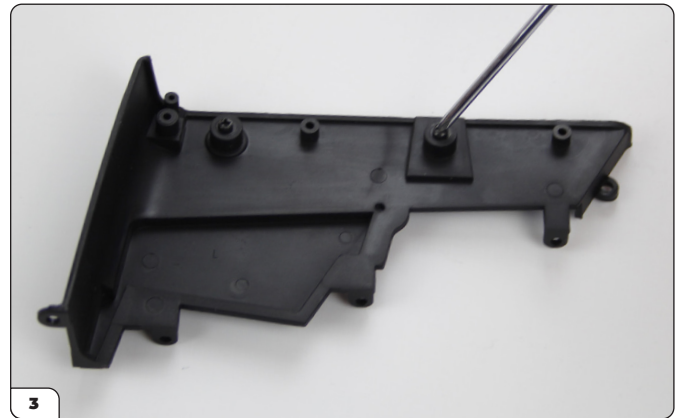


Stage 42: Left Rear Interior Panel

STEP 2

ATTACH THE SEAT RELEASE LEVER TO THE INTERIOR PANEL

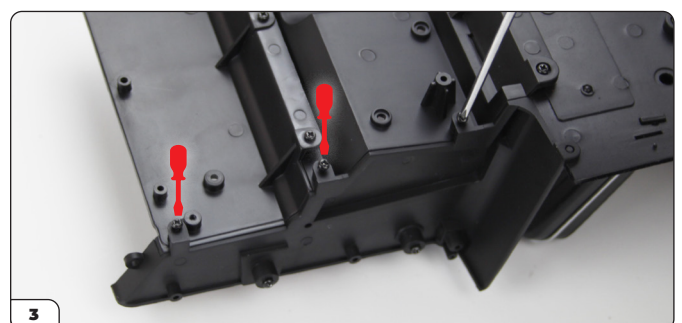
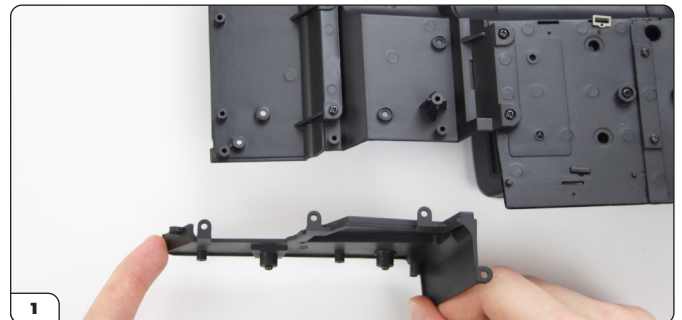
Align the Seat Release Lever with the Left Interior Panel. Place into position and fix from the reverse side using a TYPE MP01 screw.



STEP 3

ATTACH THE INTERIOR PANEL TO THE REAR PLATFORM AND REAR SEAT SUPPORT ASSEMBLY

Align the Left Rear Interior Panel with the Rear Seat Support and Rear Platform assembled in the previous two stages. Hook the hole on the Interior Panel over the lug as indicated in picture 2. Hook the remaining 3 holes over the 3 screw holes. Fix into place using 3 x TYPE MP01 screws, starting with the lowest screw, and moving to the centre screw, and then the highest screw.



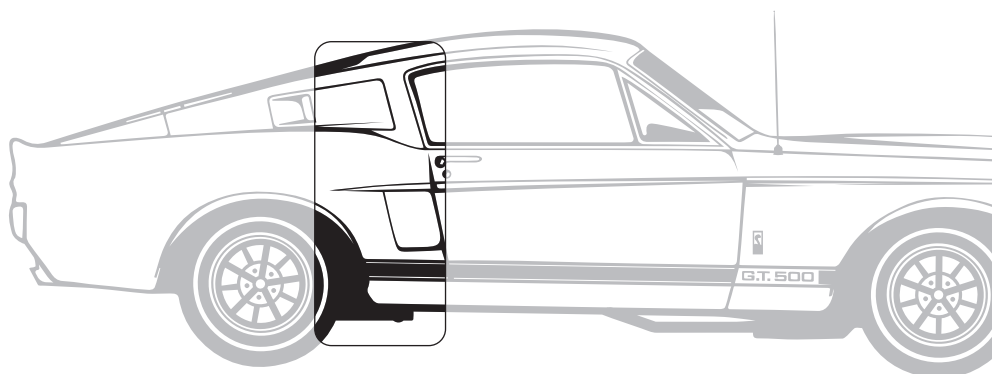
Stage 42: Left Rear Interior Panel

Stage 42 complete!



Stage 43: Left Rear Upper Interior Panel and Ventilation Grille

You will continue to build the left rear interior sections.



STAGE 43 PARTS LIST

Name	Quantity
Left Upper Interior Panel	1
Ventilation Grille	1
Screws TYPE MP01	5 [inc. 1 spare]
Screws TYPE MP05	2 [inc. 1 spare]

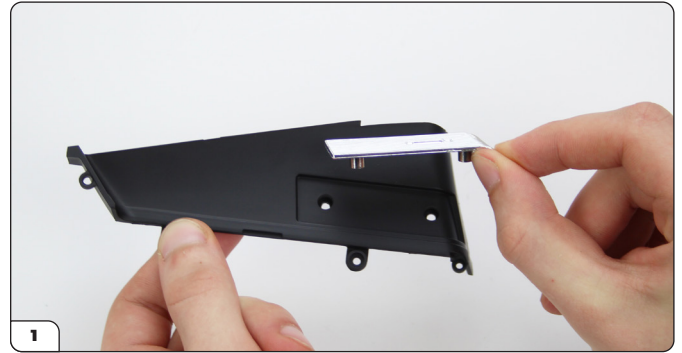


Stage 43: Left Rear Upper Interior Panel and Ventilation Grille

STEP 1

ATTACH THE VENTILATION GRILLE TO THE LEFT INTERIOR PANEL

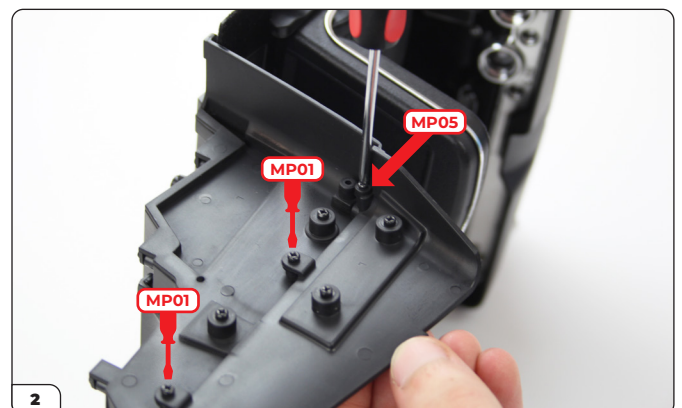
Align the lugs on the Ventilation Grille with the holes on the Left Interior Panel. Place into position and fix on the reverse side using 2 x TYPE MP01 screws.



STEP 2

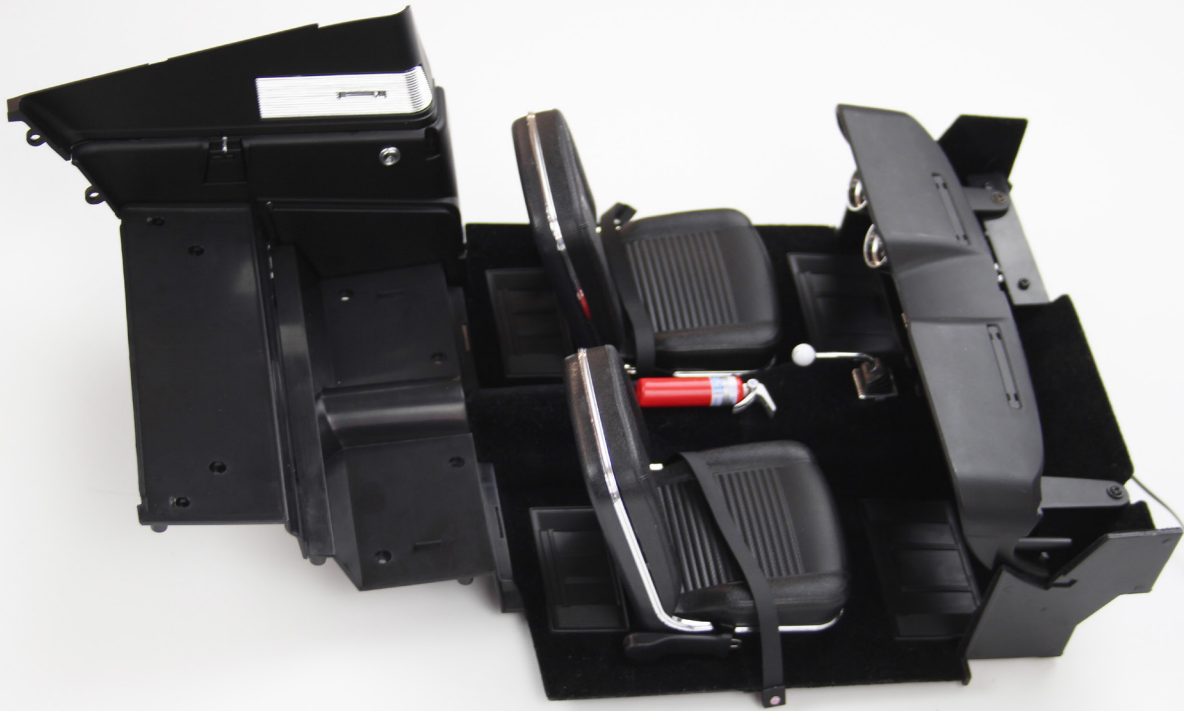
ATTACH THE LEFT INTERIOR UPPER PANEL TO THE LEFT INTERIOR PANEL

Align the holes on the Left Interior Upper Panel with the screw holes on the Left Interior Panel from Stage 42. Fix into place using 2 x TYPE MP01 screws and 1 x TYPE MP05 screw as shown in picture 2.



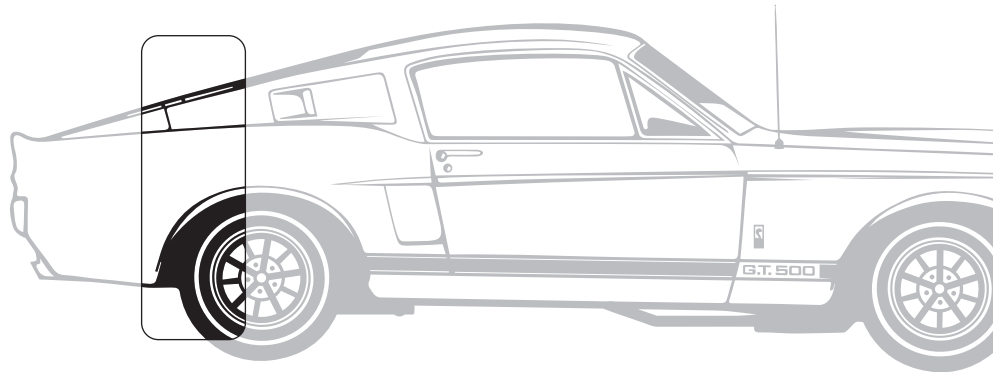
Stage 43: Left Rear Upper Interior Panel and Ventilation Grille

Stage 43 complete!



Stage 44: Interior Trunk Partition Panel

In this stage you will add the Trunk Partition Panel to the Left Interior Panels



STAGE 44 PARTS LIST

Name	Quantity
Interior Trunk Partition Panel	1
Screws TYPE MP01	4 [inc. 1 spare]



Stage 44: Interior Trunk Partition Panel

STEP 1

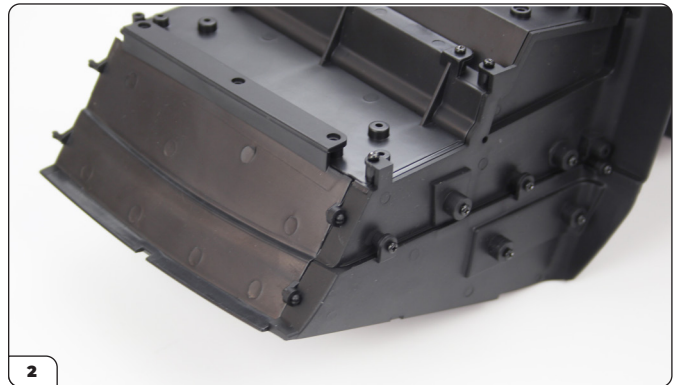
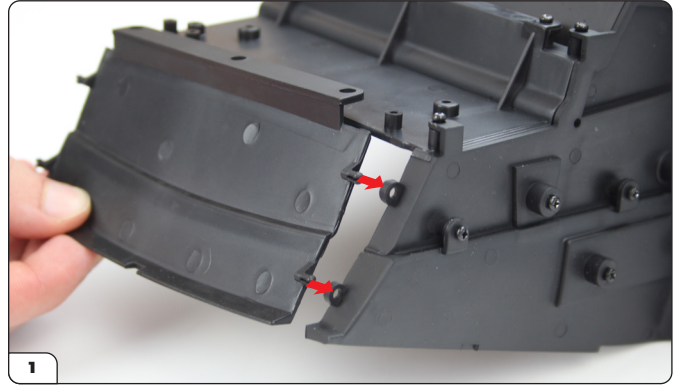
ATTACH THE INTERIOR TRUNK PARTITION PANEL TO THE LEFT INTERIOR PANELS

Place the assembly from Stage 43 upside down on your worktop. Align the Trunk Partition Panel as shown. The Partition has 2 tenons which must correspond to the 2 holes on the Interior Panels. Fit the holes on the Partition onto the screw holes on the Interior Rear Platform compartment. Fix into place using 3 x TYPE MP01 screws.



ADVICE FROM THE EXPERTS

If there is any flash on the tenons, clear it off with a craft knife to make it easier to push them into the holes on the interior panels. Check all four tenons.



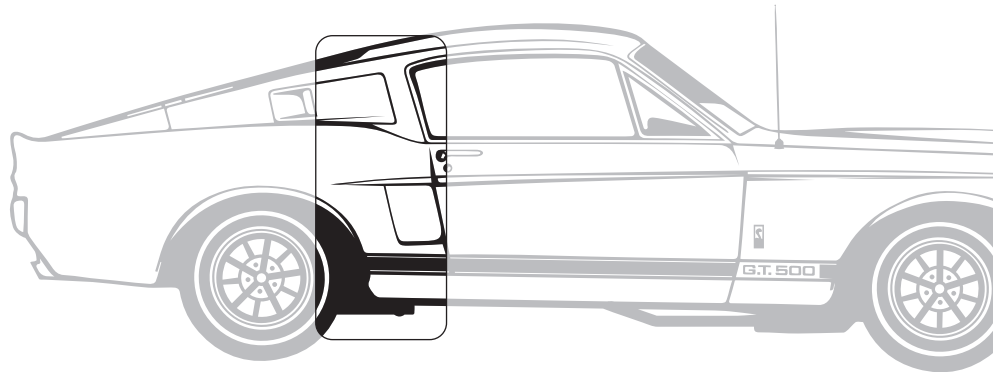
Stage 44: Interior Trunk Partition Panel

Stage 44 complete!



Stage 45: Rear Seat Folding Panel and Hinge

You will start to build the Rear Seat Folding Panel.



STAGE 45 PARTS LIST

Name	Quantity
Rear Seat Folding Panel	1
Hinge	1
Screws TYPE MP07	4 [inc. 1 spare]



Stage 45: Rear Seat Folding Panel and Hinge

STEP 1

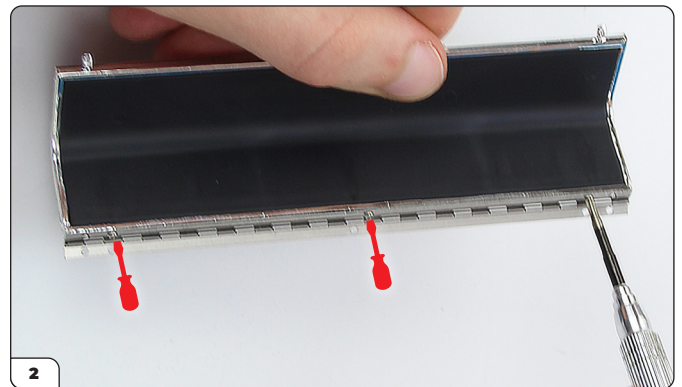
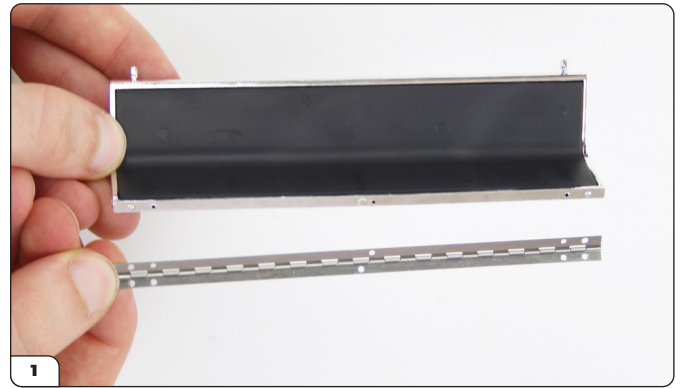
ATTACH THE HINGE TO THE REAR SEAT FOLDING PANEL

Align the Hinge with Rear Seat Folding Panel as shown.
Note: There is only one way to mount the hinge. Check the holes are aligned before placing your first screw. Screw together using 3 x TYPE MP07 screws.



ADVICE FROM THE EXPERTS

These screws are tiny. The screwdriver that came in your first Pack is perfect for this. Ensure you have magnetised it by stroking it against a magnet. A fridge magnet will do.

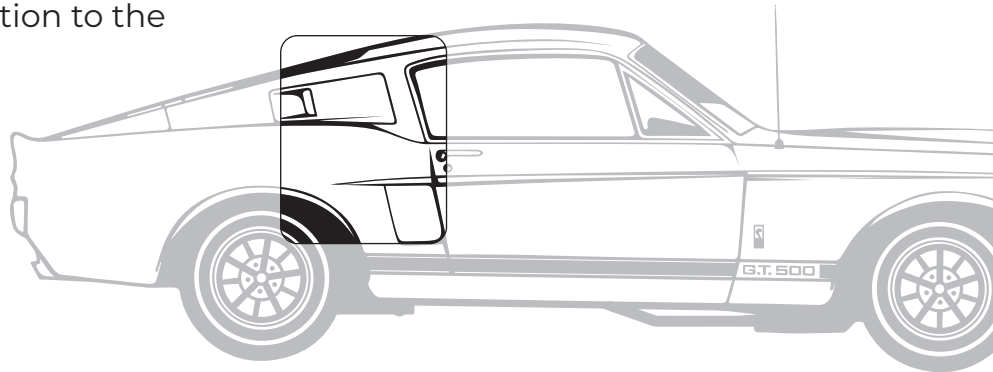


Stage 45 complete!



Stage 46: Rear Seat Backrest Panel

You are now going to start building the rear seats, adding another section to the Rear Seat Folding Panel.



STAGE 46 PARTS LIST

Name	Quantity
Rear Seat Back	1
Rear Seat Back Panel	1
Screws TYPE MP07	4 [inc. 1 spare]

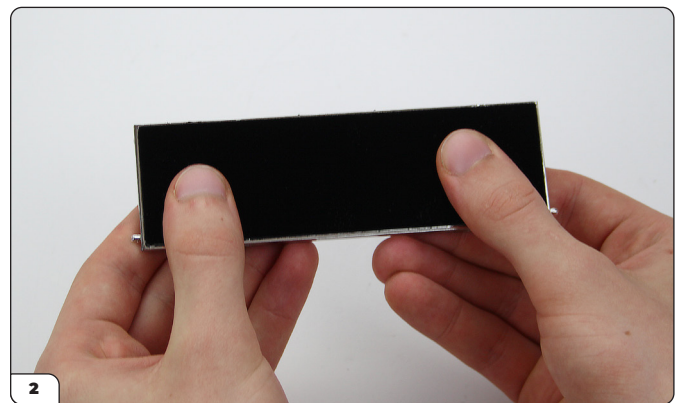
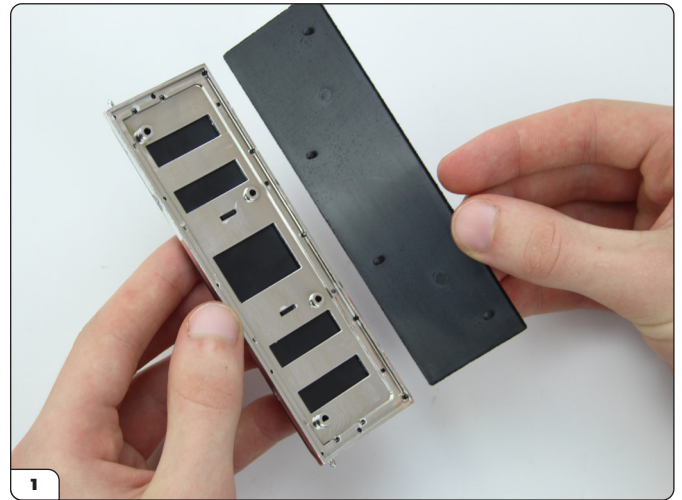


Stage 46: Rear Seat Backrest Panel

STEP 1

JOIN THE REAR SEAT BACK TO THE REAR SEAT BACK PANEL

Align the lugs on the Rear Seat Panel with the holes on the Rear Seat Back. Push the two parts together firmly.



STEP 2

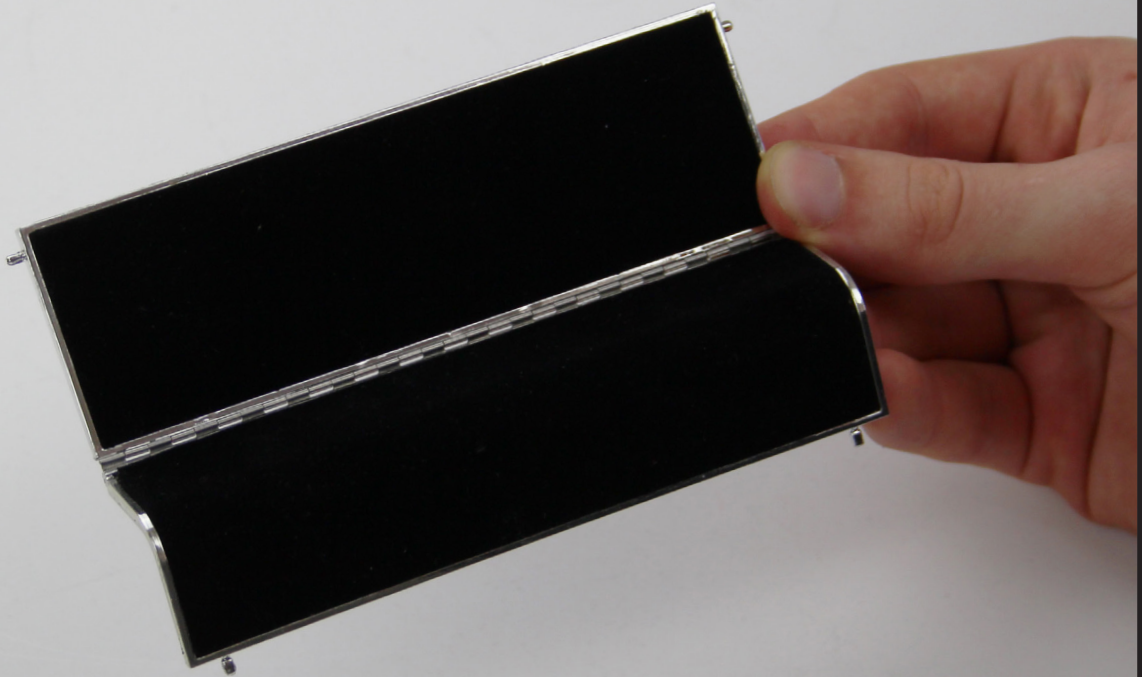
JOIN THE REAR SEAT BACK AND BACK PANEL ASSEMBLY TO THE REAR SEAT FOLDING PANEL

Align the holes on the Rear Seat Back Assembly with the holes on the Hinge of the Rear Seat Folding Panel from Stage 45. Fix the two sections together using 3 x TYPE MP07 screws. Start with the outer screws, followed by the central screw.



Stage 46: Rear Seat Backrest Panel

Stage 46 complete!



The Image below shows where the Rear Seat Backrest Assembly will be fixed to the rear seat section at a future stage.

