

# OPTIMUS PRIME



## Pack 05

### BUILD INSTRUCTIONS

- ASSEMBLING THE THUMB
- ASSEMBLING THE LITTLE FINGER
- ASSEMBLING THE FINGERS - PART 1
- ASSEMBLING THE FINGERS - PART 2
- ASSEMBLING THE HAND
- ASSEMBLING THE LOWER RIGHT ARM

**AGORA**  
MODELS®

# Advice from the experts

---

 **Please keep ALL unused screws as they may be required in a later stage.**

Please make sure you don't mix up the screws. They look quite similar, but the threads do vary slightly. Using the wrong screws may damage the parts.

When securing parts together using multiple screws, fit each screw loosely to ensure all the parts are correctly aligned before gently tightening them firmly, but not overtight, in the order in which you placed them.

The screwdriver can be magnetized by stroking it with a magnet (fridge magnet, etc.) enabling it to hold the screws and make assembly easier.

If a screw is tight going into a metal part, do not force it as you may shear the head off. Remove it and put a tiny smear of Vaseline, soap or light oil on the thread. That will lubricate it and make it easier to drive home.

Some parts will require a little glue for assembly. Please apply glue sparingly and use a cocktail stick so that you don't use too much nor apply the glue too heavily. We recommend superglue gel or Extra Thin Liquid modeling glue. Where possible, parts should be test-fitted in place before gluing.



Look out for the glue symbol and apply glue to the red area indicated in the picture.

During the course of this build, you will receive many pieces that you will assemble immediately – following the instructions in the corresponding stage – and other pieces that you should store in the tray supplied, for use in future assembly stages.

Always protect the paint finish on components by placing a cutting mat, sheet of white paper or soft cloth on your work surface.

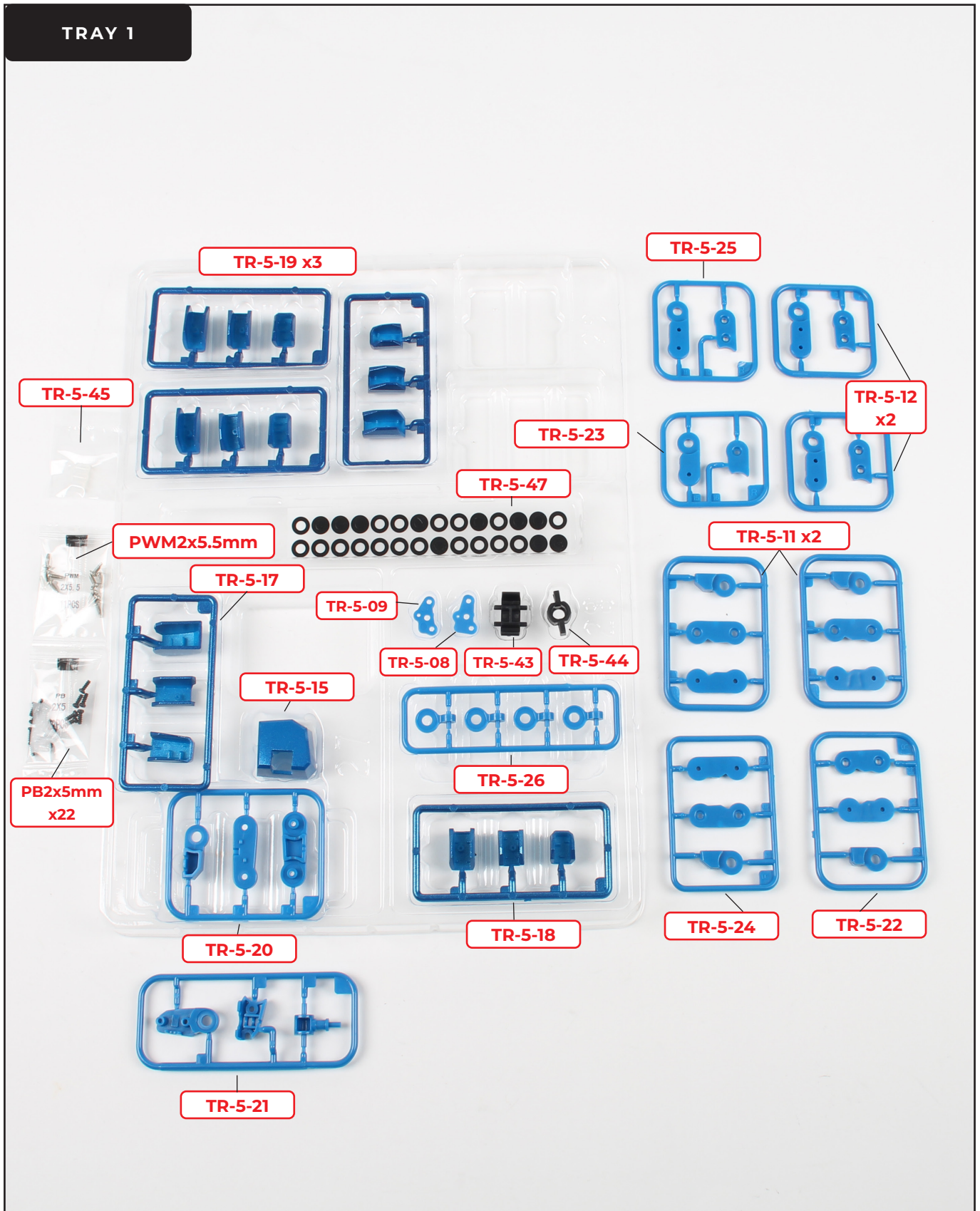
Left and Right! When building your Optimus Prime, the left or right hand side refers to each side as viewed by Optimus Prime. Optimus Prime's left arm is on the viewer's right.



**WARNING:** Some parts are assembled using magnets. These magnets can cause serious injury if they are swallowed. Keep away from children. If you suspect a magnet has been swallowed, seek medical help straight away.

# Pack 5 Parts

TRAY 1



# Pack 5 Parts

TRAY 2

PB2.3x6mm  
x24

PWB2x6mm  
x5

TR-5-41

TR-5-42

TR-5-16

TR-5-35

TR-5-40

TR-5-39

TR-5-31

TR-5-51 x2

TR-5-06

TR-5-05

TR-5-10

TR-5-32

TR-5-46

TR-5-07

TR-5-37

TR-5-14

TR-5-13

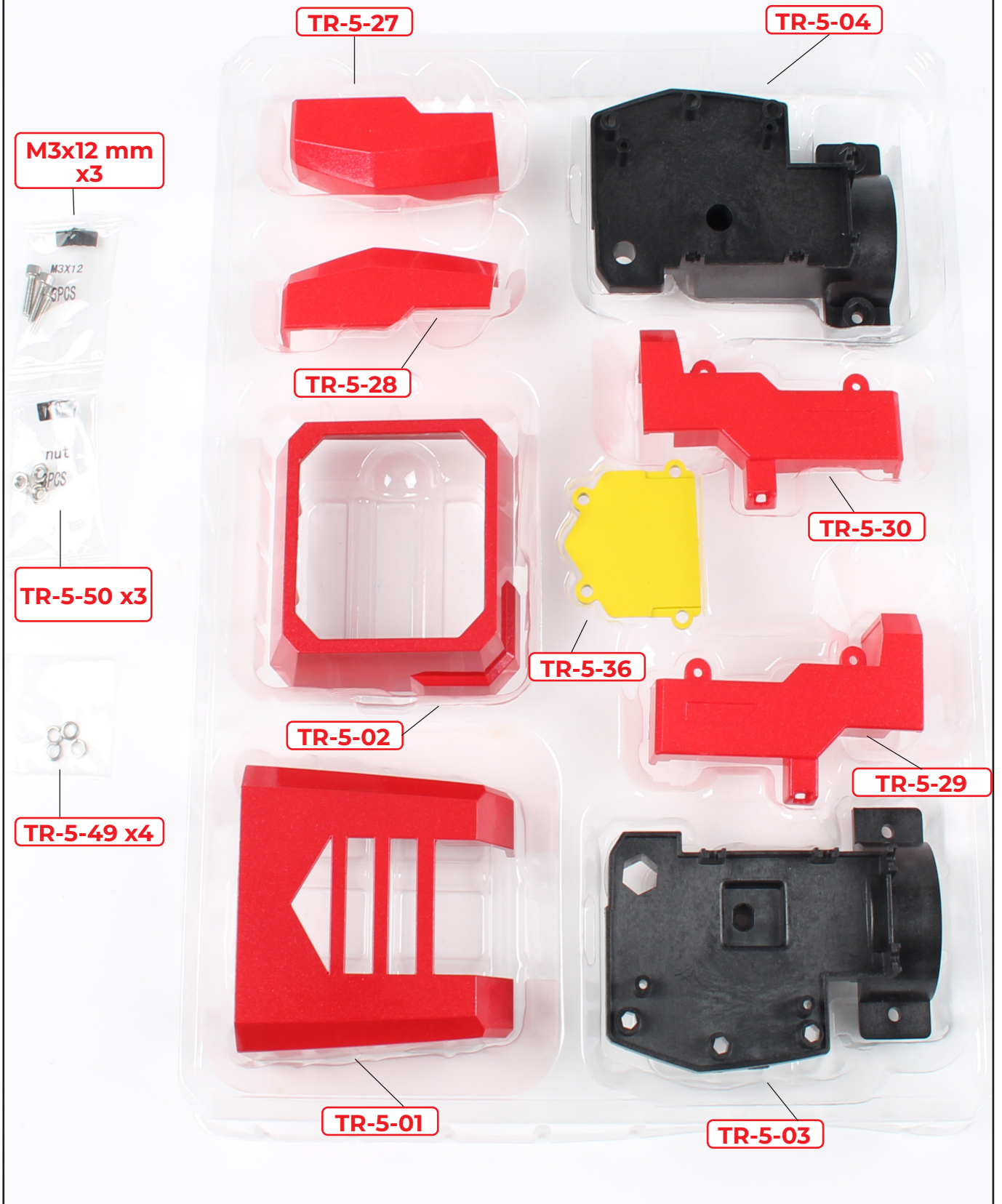
TR-5-38

TR-5-34

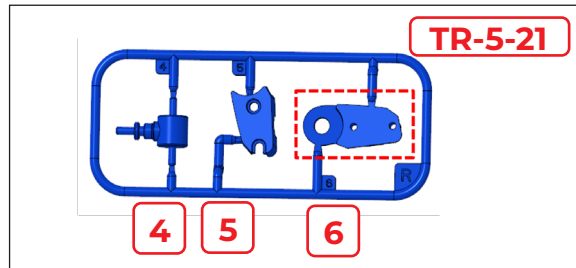
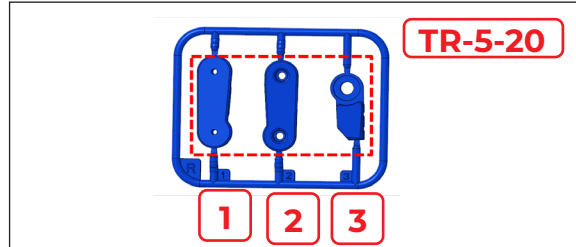
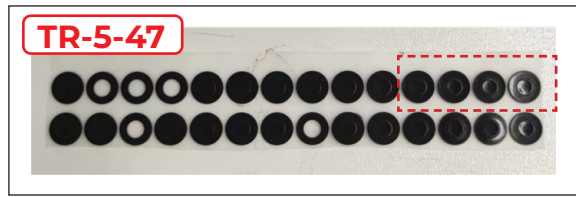
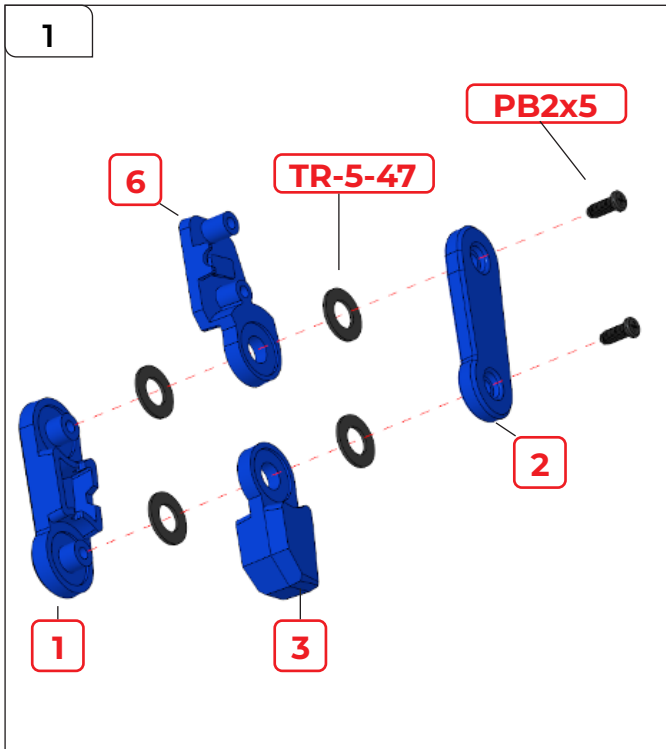
TR-5-33

# Pack 5 Parts

TRAY 3

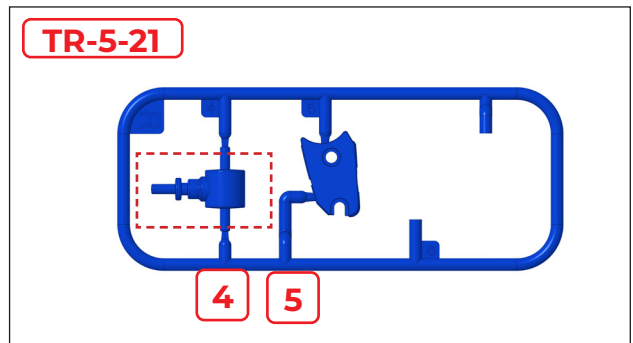
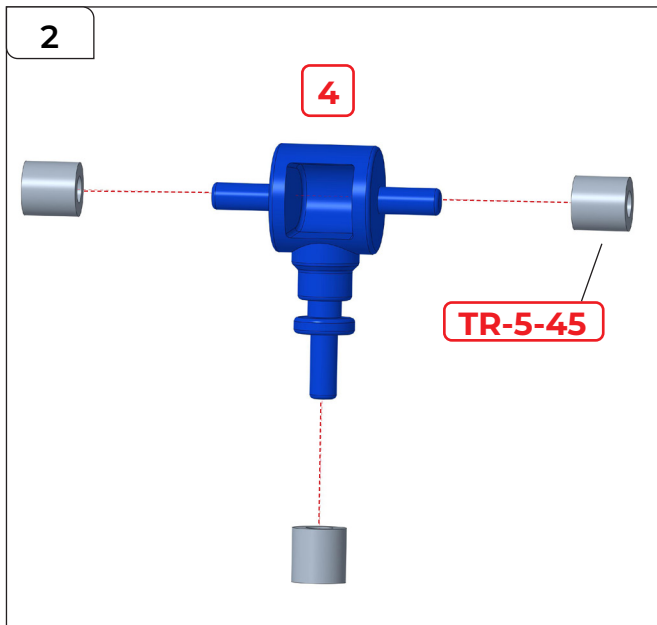


# Assembling the Thumb



## STEP 1

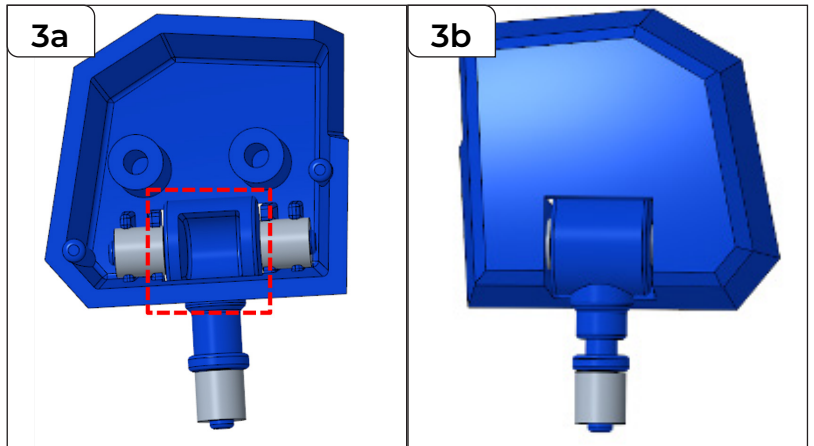
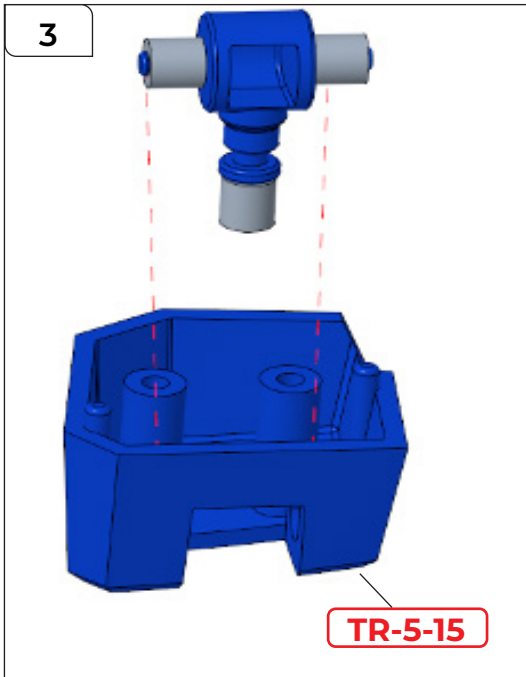
Snap No.s 1, 2 & 3 from sprue TR-5-20. Then snap No.6 from sprue TR-5-21.  
Place 2x TR-5-47 onto No.1. Place 2x TR-5-47 onto No.s 3 and 6, then place them onto No.1.  
Place No.2 on top of the assembly and secure everything together using 2x PB2x5mm screws.



## STEP 2

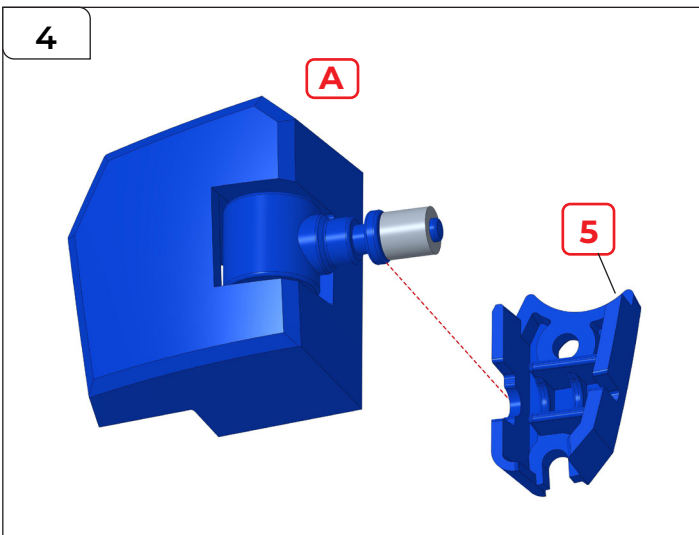
Snap No.4 from sprue TR-5-21.  
Fix 3x TR-5-45 to No.4.

# Assembling the Thumb

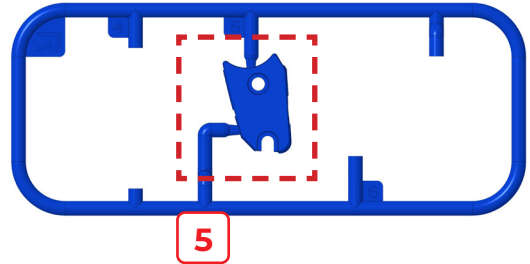


## STEP 3

Attach the assembly from step 2 to part **TR-5-15** as shown. Note: the recess on part No.4 should face outwards, as highlighted in 3a and 3b above.

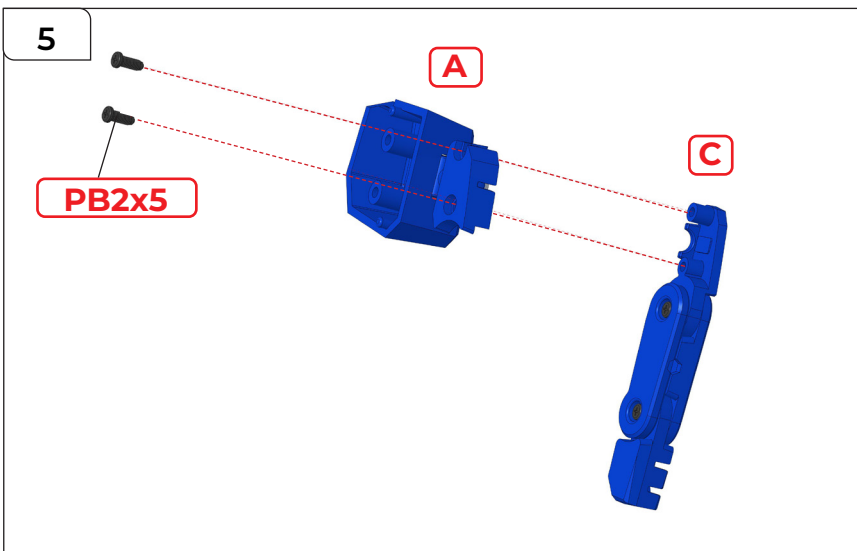


**TR-5-21**



## STEP 4

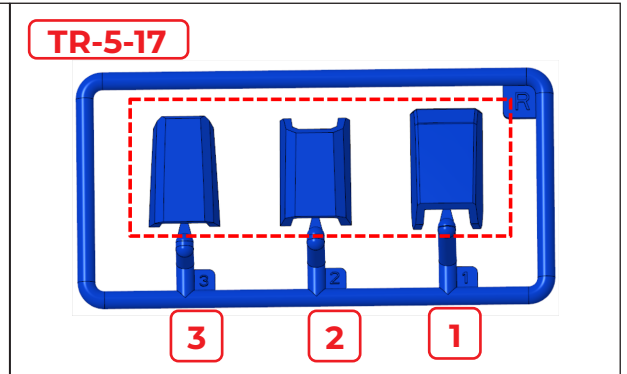
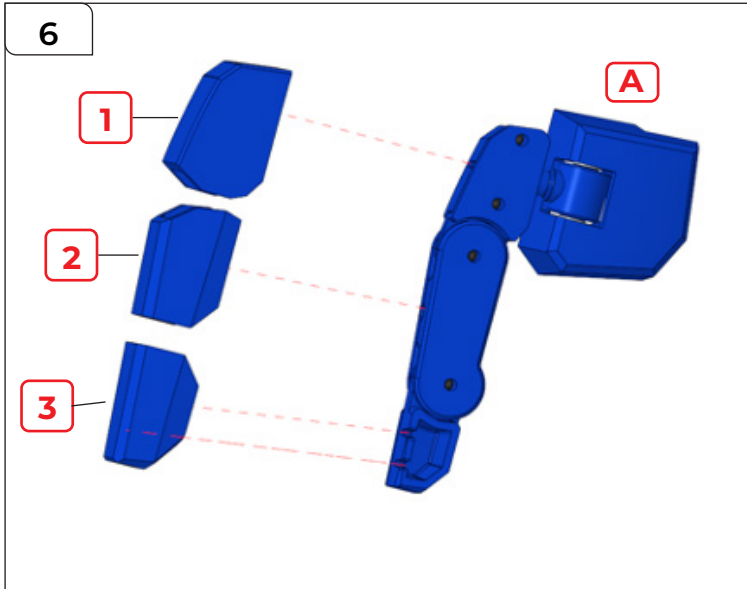
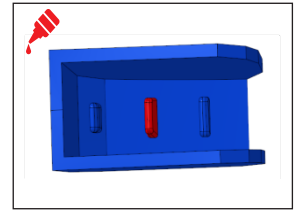
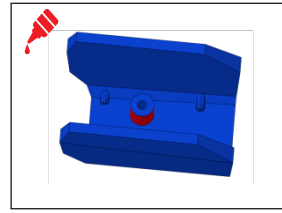
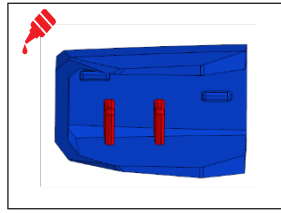
Snap No. 5 from sprue **TR-5-21** and attach it to A.



## STEP 5

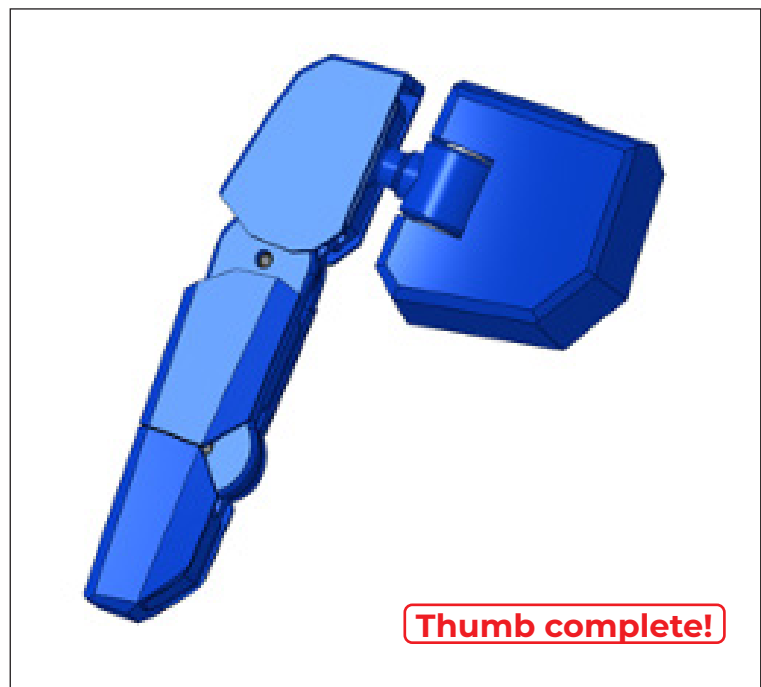
Attach A to C and secure them together using **2x PB2x5 mm** screws.

# Assembling the Thumb



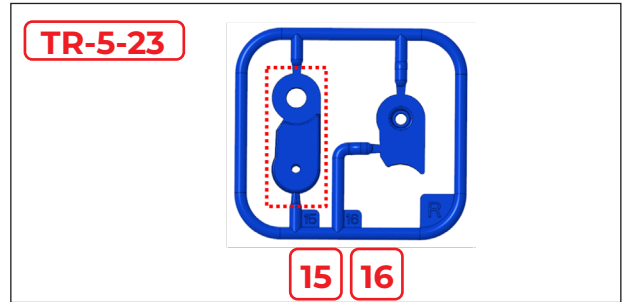
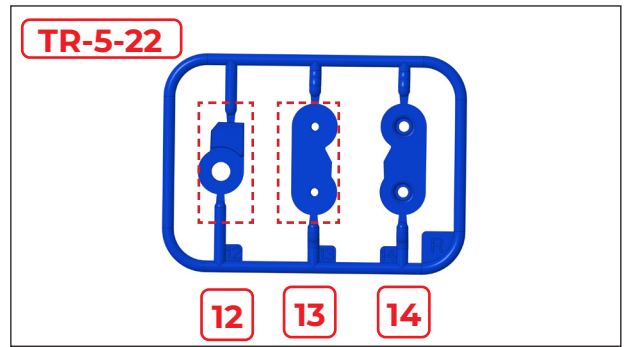
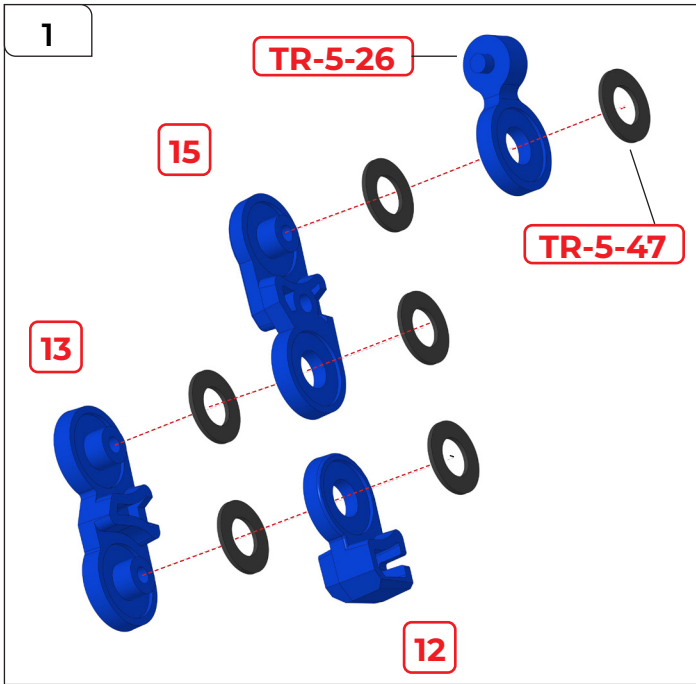
## STEP 6

Snap Nos.1, 2 & 3 from sprue TR-5-17. Apply a little glue to the area highlighted in red (above) and fix them to A as shown.



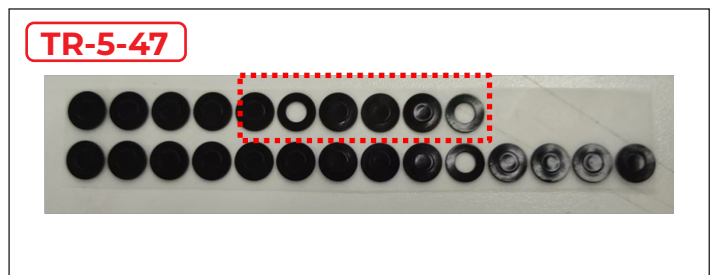
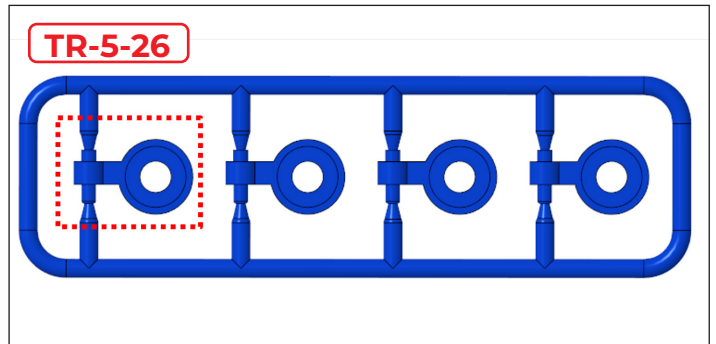


# Assembling the Little Finger

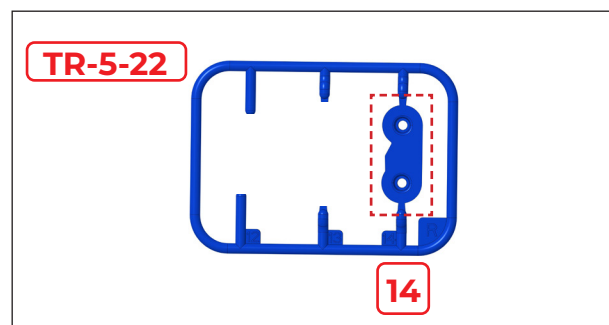
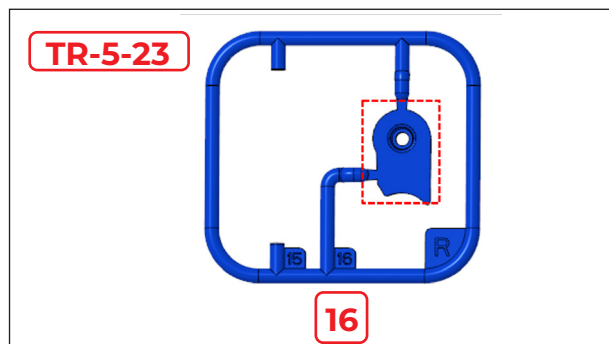
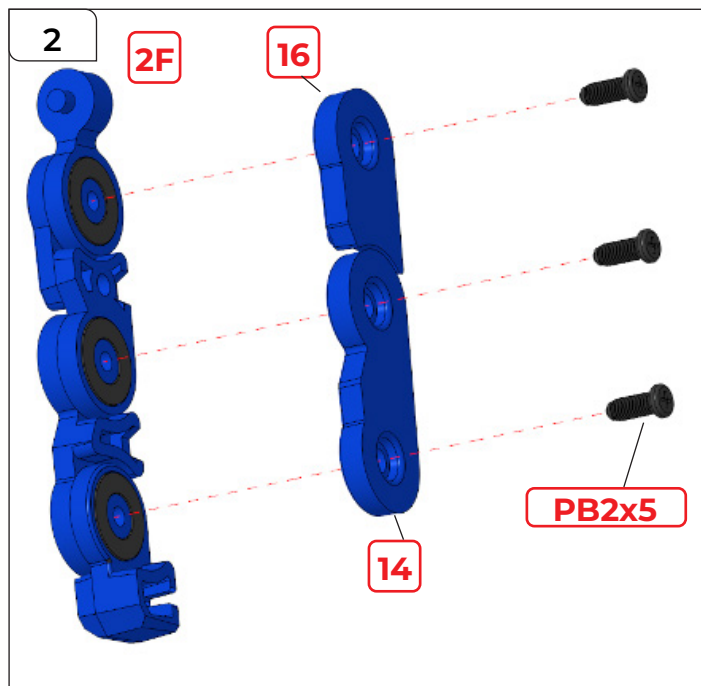


## STEP 1

Snap No.s 12, & 13 from sprue TR-5-22.  
 Then snap No.15 from sprue TR-5-23,  
 and snap 1 piece from TR-5-26.  
 Place 2x TR-5-47 onto No.13. Place 2x TR-5-47 onto  
 No.12 and 1x TR-5-47 onto 15, then place them  
 onto No.13.  
 Place 1x TR-5-47 onto TR-5-26, then place it  
 onto No.15.



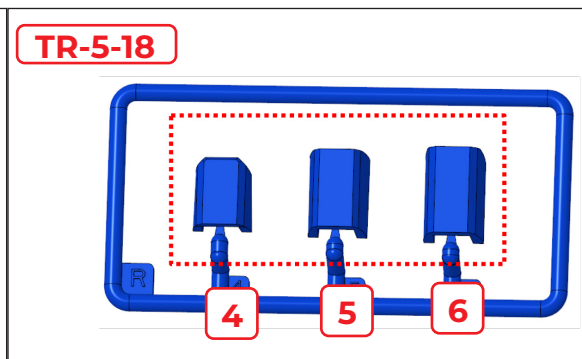
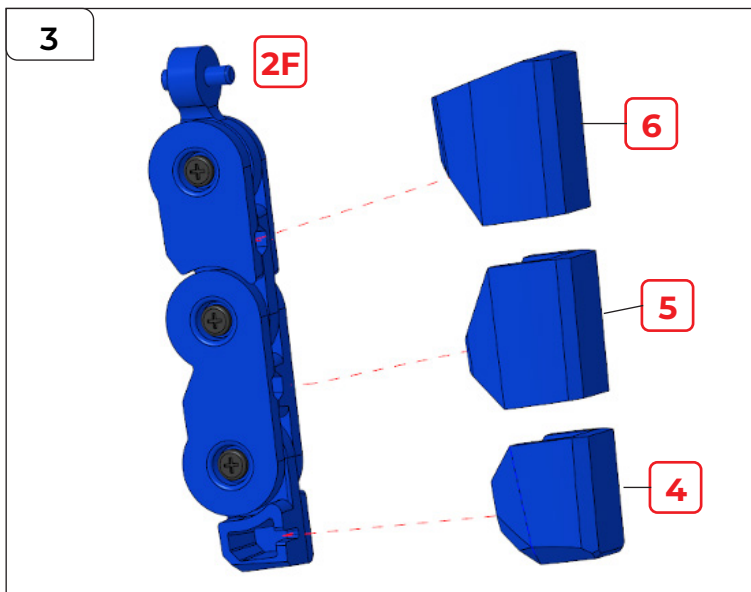
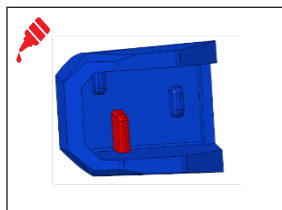
# Assembling the Little Finger



## STEP 2

Snap No. 16 from sprue **TR-5-23** and No.14 from **TR-5-22**.  
Place 14 and 16 onto 2F and secure them in place using **3x PB2x5 mm** screws .

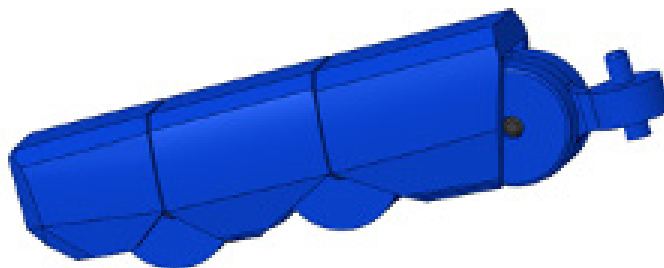
# Assembling the Little Finger



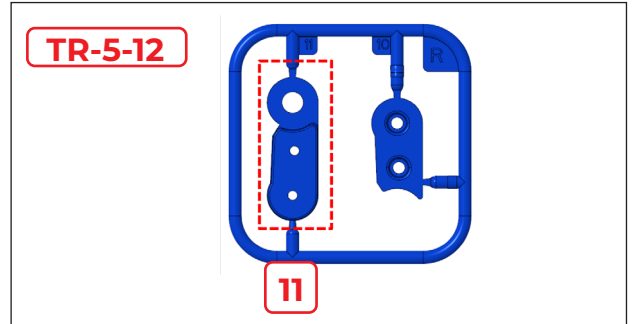
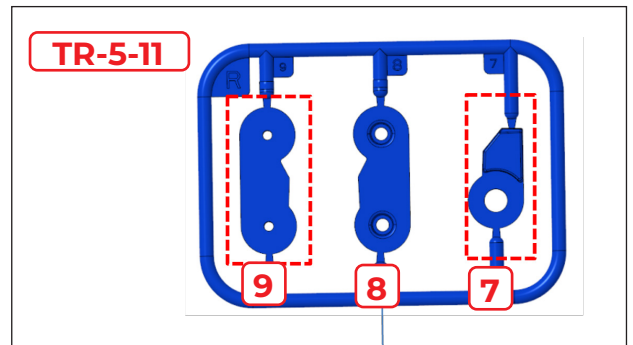
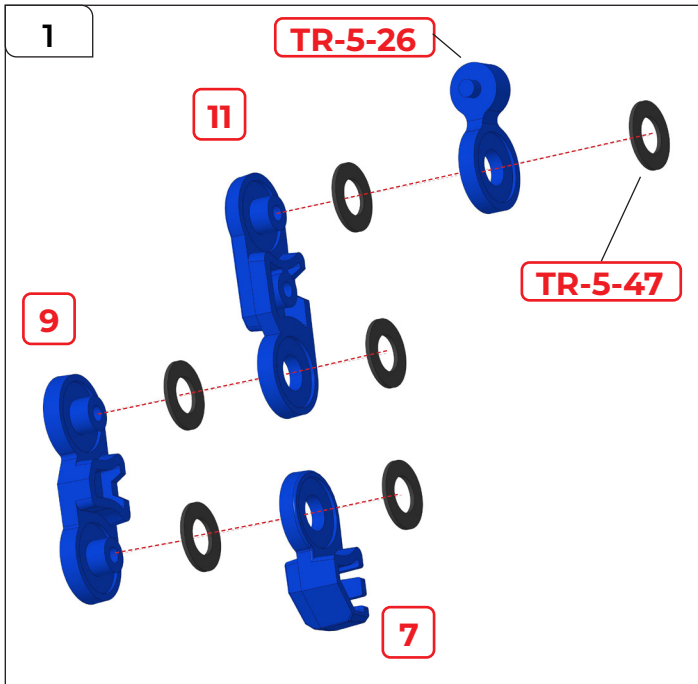
## STEP 3

Snap No.s 4, 5 & 6 from sprue TR-5-18.  
Apply glue as shown.  
Fix 4, 5 & 6 to the assembly from step 1  
as shown.

Little finger!

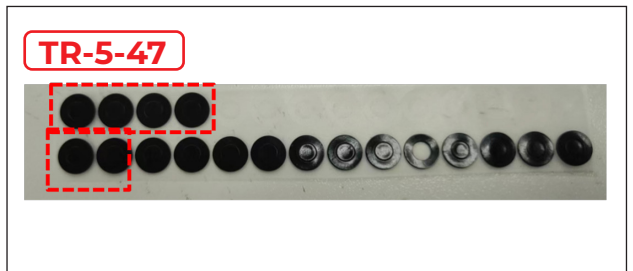
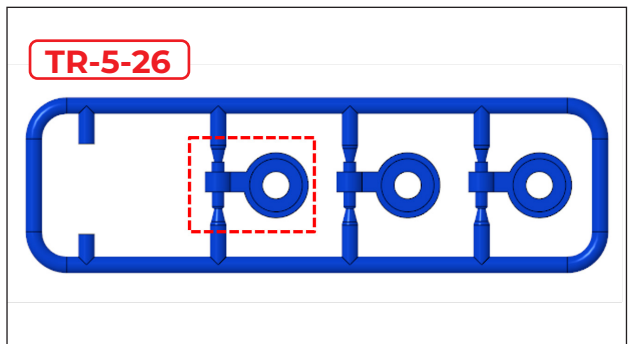


# Assembling the Fingers - Part 1

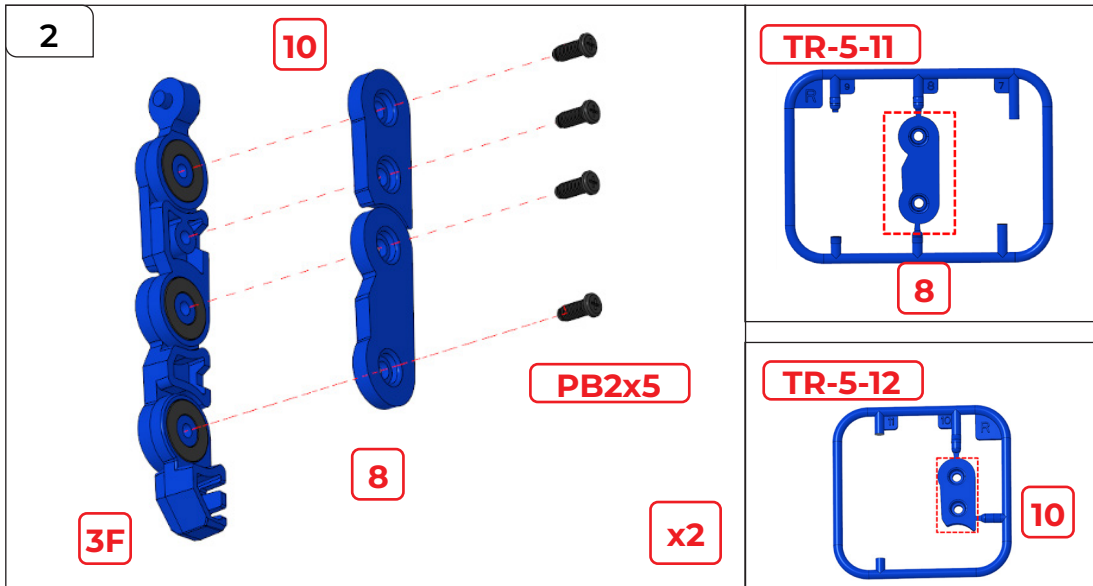


## STEP 1

- Snap No.s 7 & 9 from TR-5-11.
- Snap No. 11 from TR-5-12.
- Snap 1 piece from TR-5-26.
- Place 2x TR-5-47 on 9 & 11.
- Place 1x TR-5-47 on 7 & TR-5-26.
- Attach 7 & 11 to 9.
- Attach TR-5-26 to 11.
- Repeat step 1 to make 2 sets.

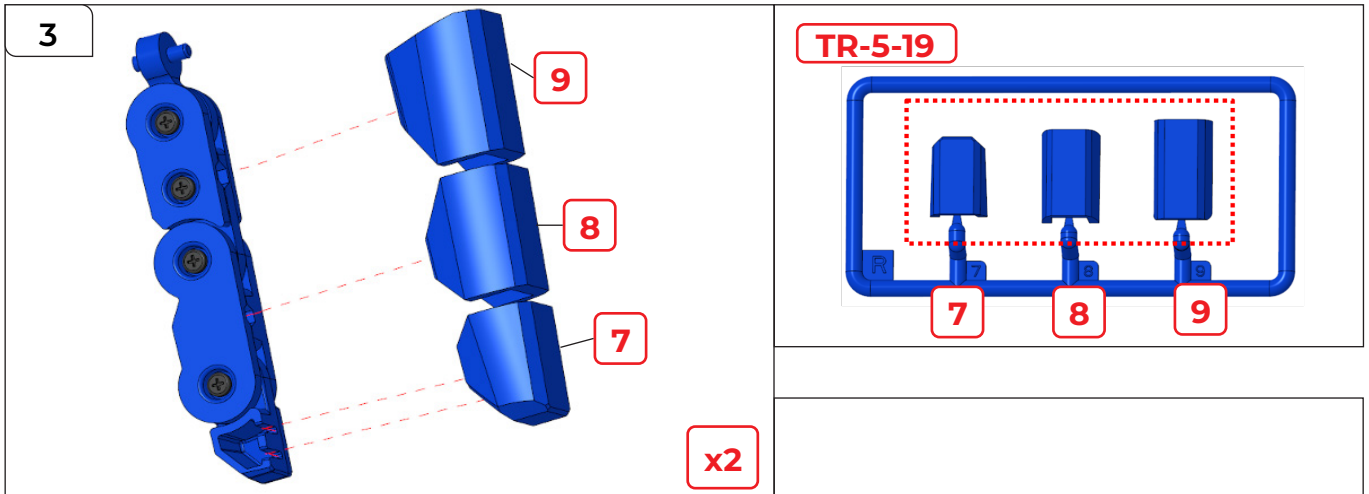
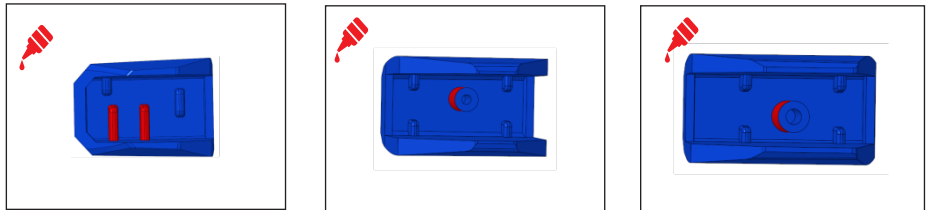


# Assembling the Fingers - Part 1



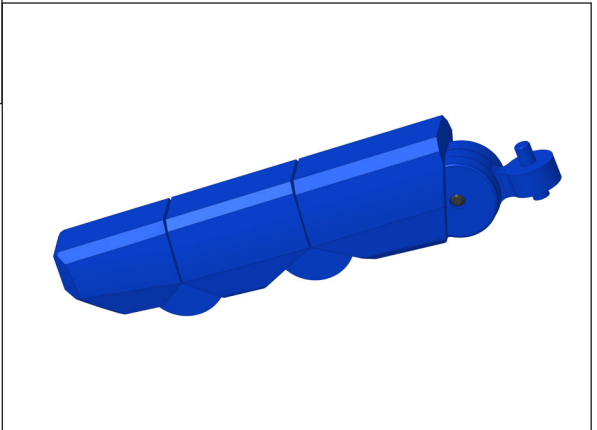
## STEP 2

Snap No. 8 from TR-5-11.  
 Snap No. 10 from TR-5-12.  
 Attach 8 & 10 to the assembly from step 1 and secure using 4x PB2x5 mm screws.  
 Repeat this step to make 2 sets.

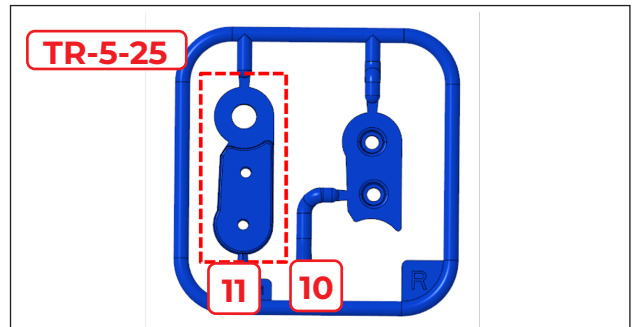
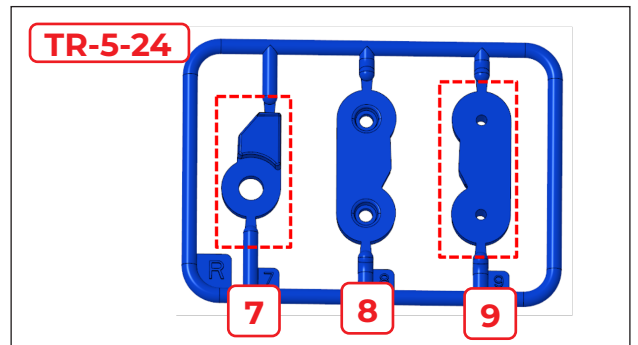
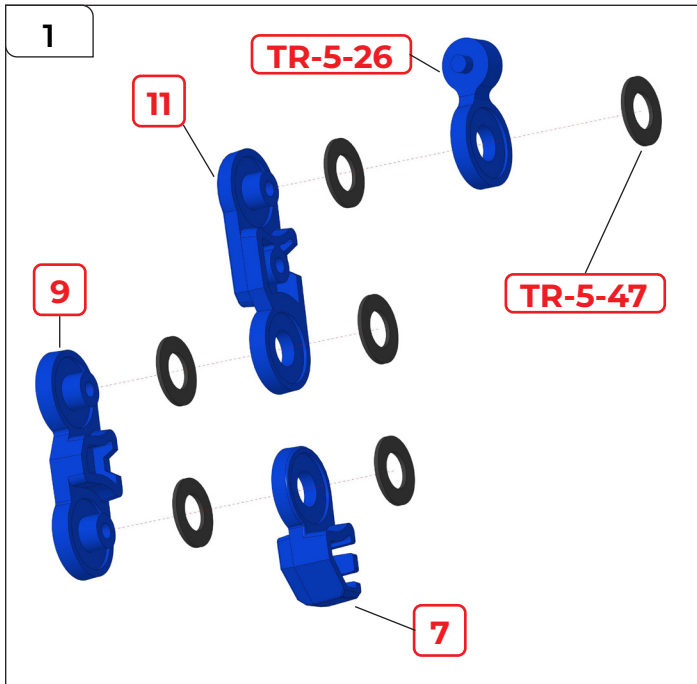


## STEP 3

Snap Nos. 7, 8 & 9 from TR-5-19.  
 Apply glue as shown.  
 Fix 7, 8 & 9 to the assembly from step 2 as shown.  
 Repeat 2 times to complete 2 finger sets.

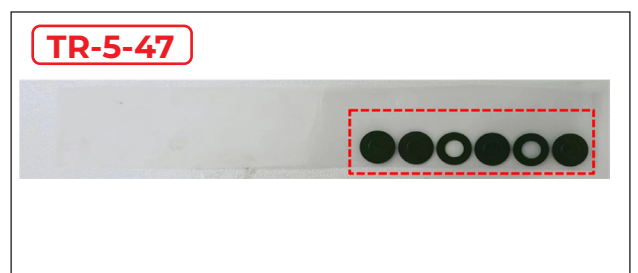
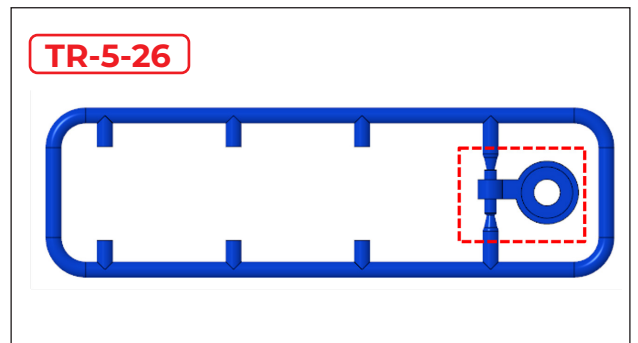


# Assembling the Fingers - Part 2

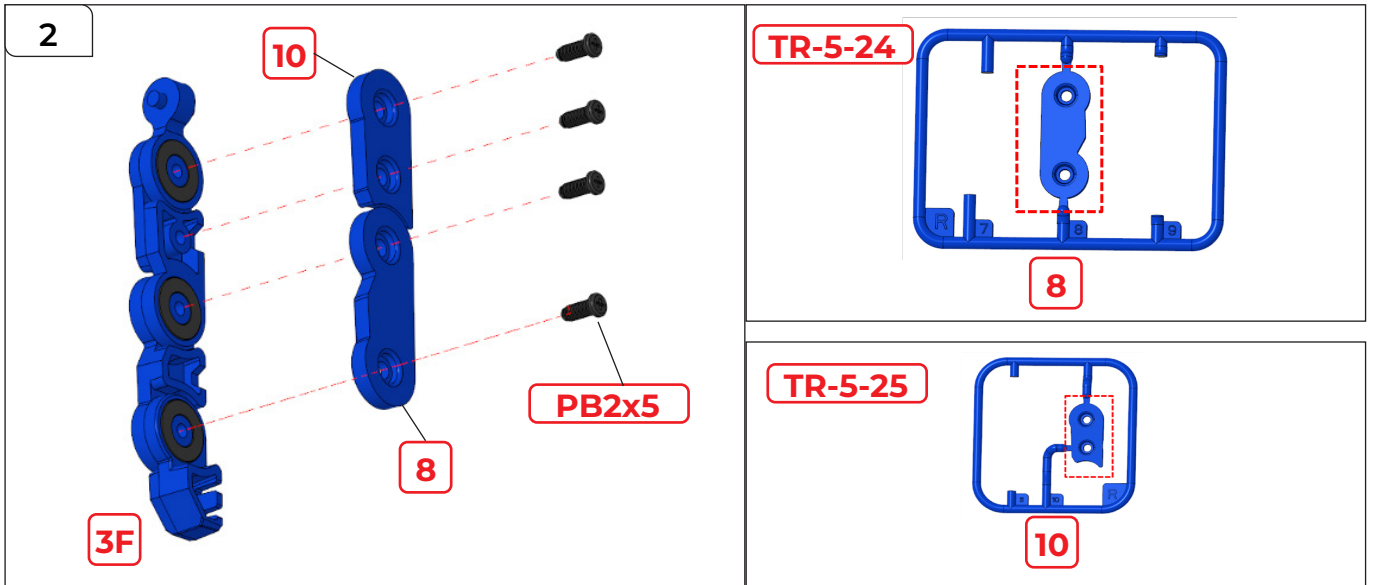


## STEP 1

- Snap No.s 7 & 9 from TR-5-24.
- Snap No. 11 from TR-5-25.
- Snap 1 piece from TR-5-26.
- Place 2x TR-5-47 on 9 & 11.
- Place 1x TR-5-47 on 7 & TR-5-26.
- Attach 7 & 11 to 9.
- Attach TR-5-26 to 11.

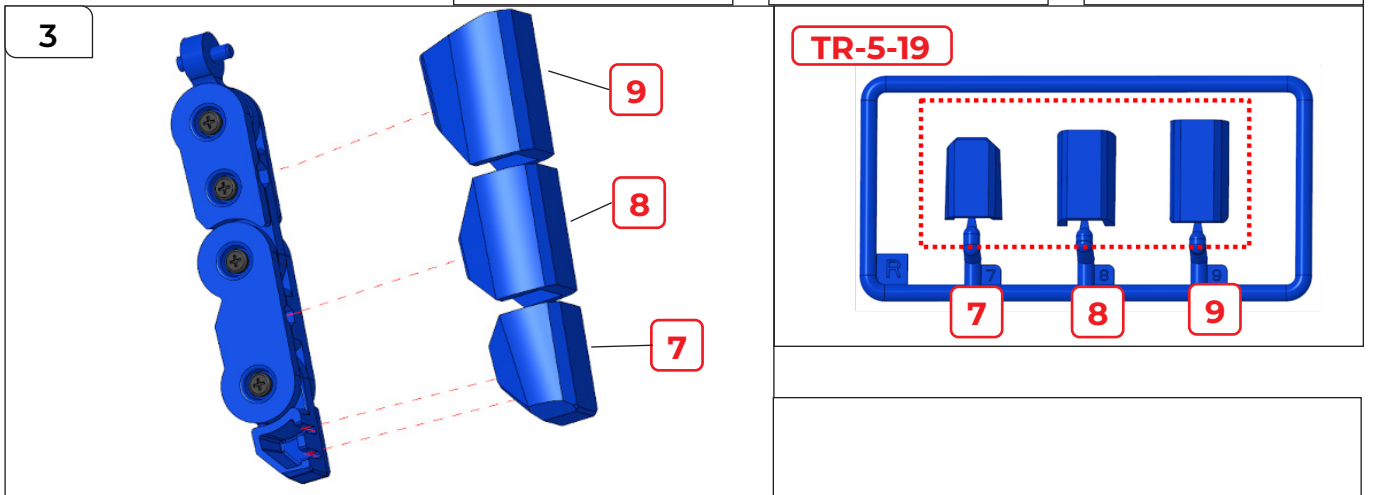
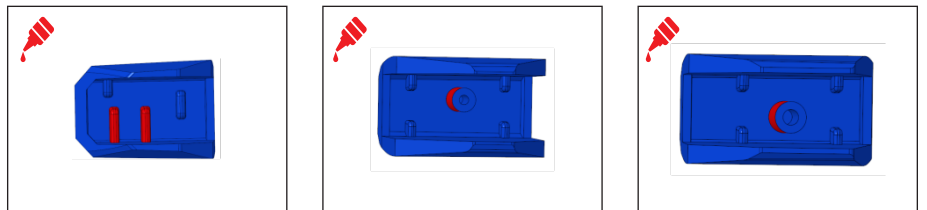


# Assembling the Fingers - Part 2



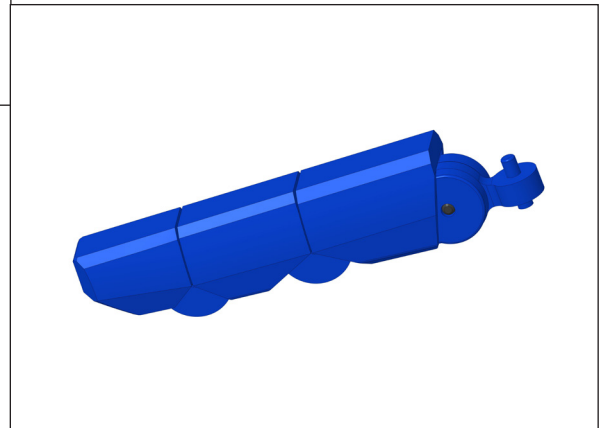
## STEP 2

Snap No. 8 from TR-5-24.  
 Snap No. 10 from TR-5-25.  
 Attach 8 & 10 to the assembly from step 1 and secure using 4x PB2x5 mm screws.

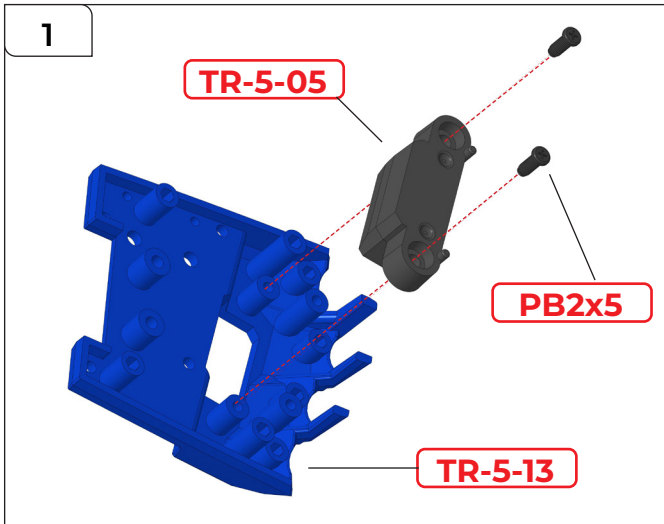


## STEP 3

Snap No.s 7, 8 & 9 from TR-5-19.  
 Apply glue as shown.  
 Fix 7, 8 & 9 to the assembly from step 2 as shown.



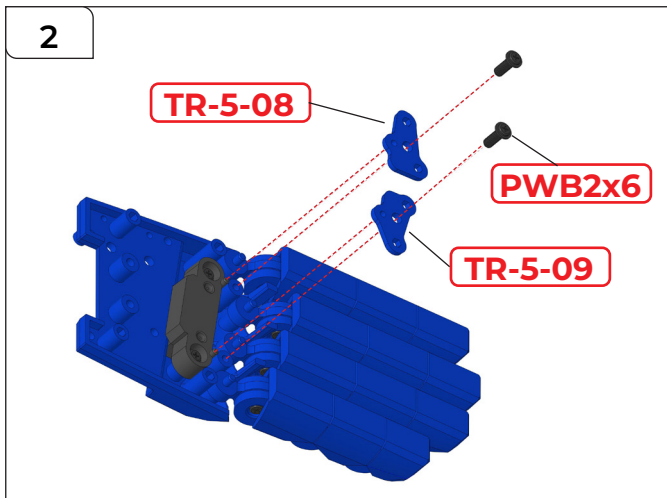
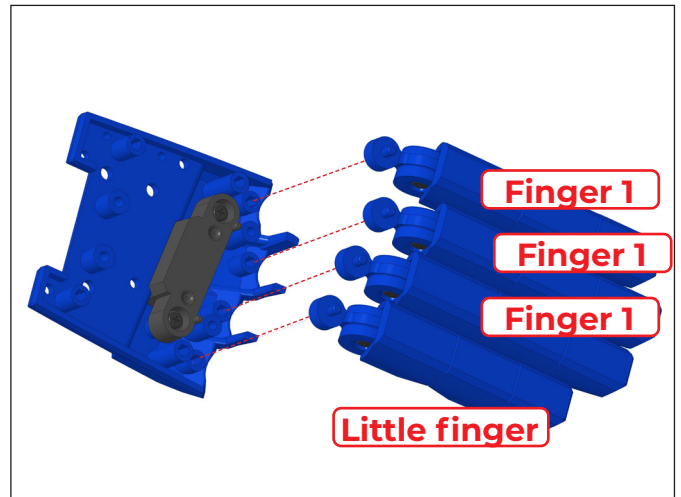
# Assembling the Right Hand



## STEP 1

Attach TR-5-13 to TR-5-05 and secure together using 2x PB2x5 mm screws.

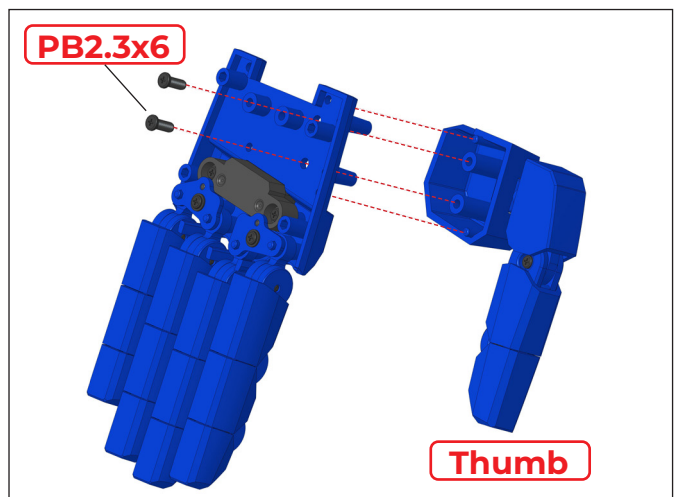
Attach the little finger and 3 sets of fingers as shown below. Note, in this step and the step that follows, you may find it easier to attach two adjoining fingers at a time rather than all four fingers together.



## STEP 2

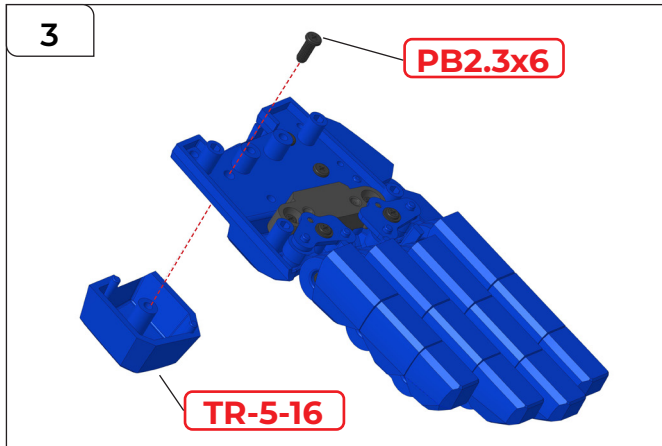
Attach TR-5-08 and TR-5-09 to the assembly from step 1 and secure them using 2x PWB2x6 mm screws.

Then attach the thumb to the palm, securing them together using 2x PB2.3x6 mm screws.





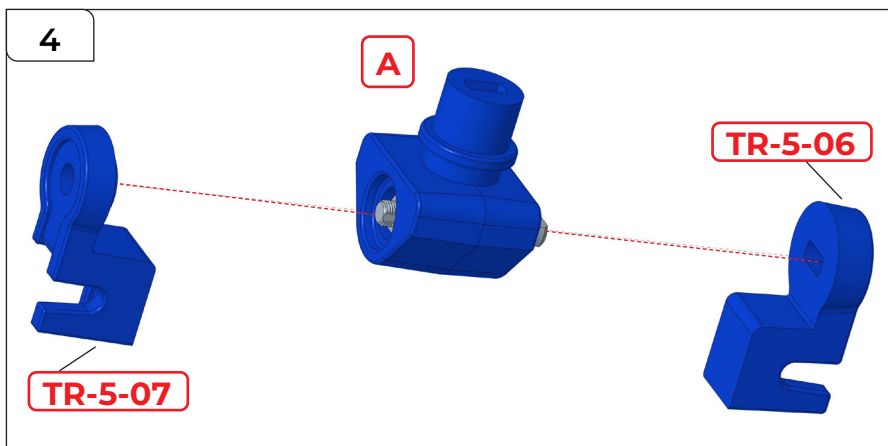
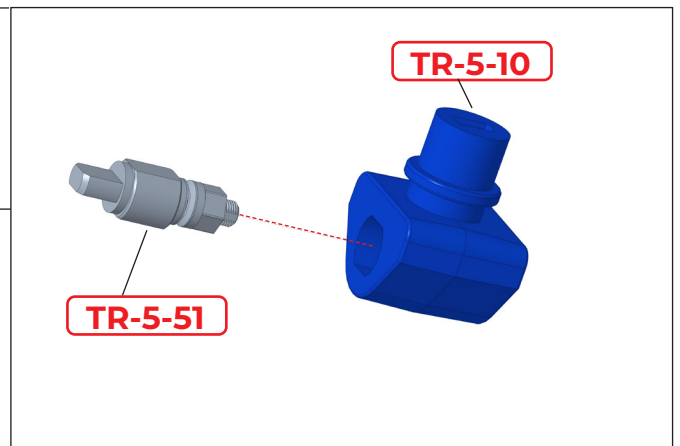
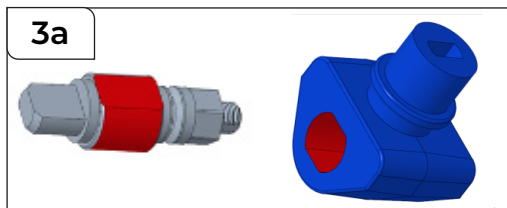
# Assembling the Right Hand



## STEP 3

Attach TR-5-16 to the right hand as shown. Use 1x PB2.3x6 mm screw to secure it in place with the thumb.

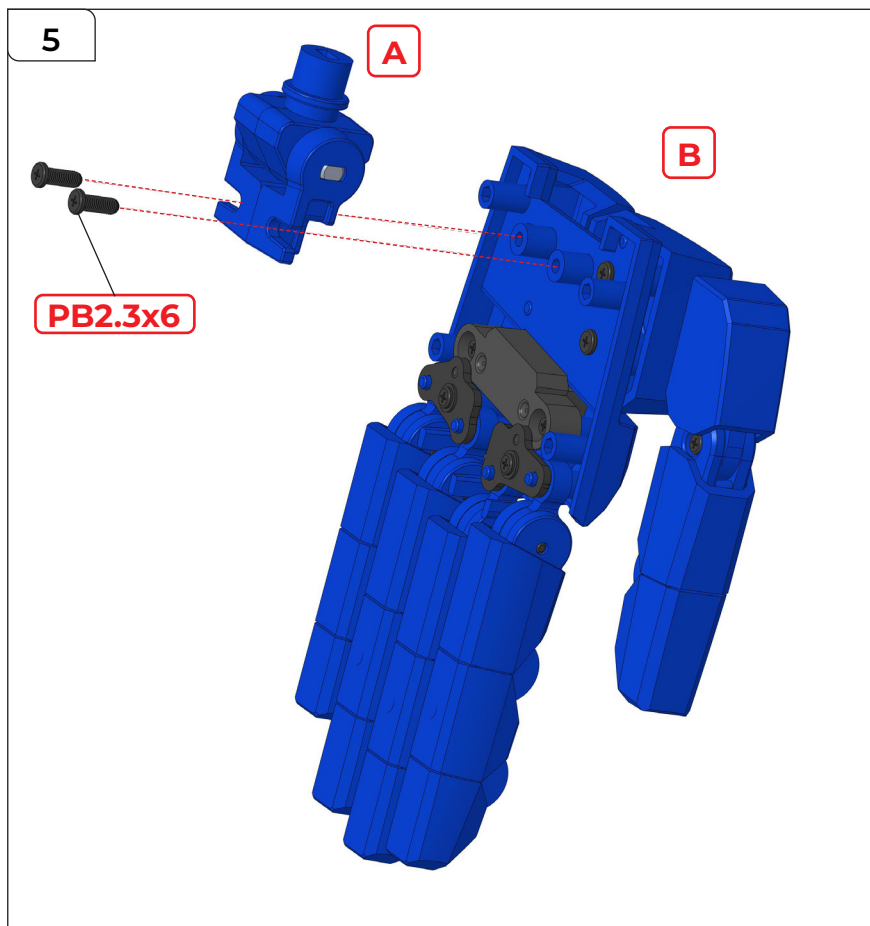
Next, insert TR-5-51 into TR-5-10, checking the orientation of the parts as shown in red in 3a. You may need a small hammer for this.



## STEP 4

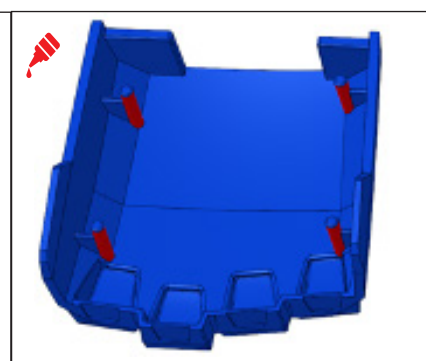
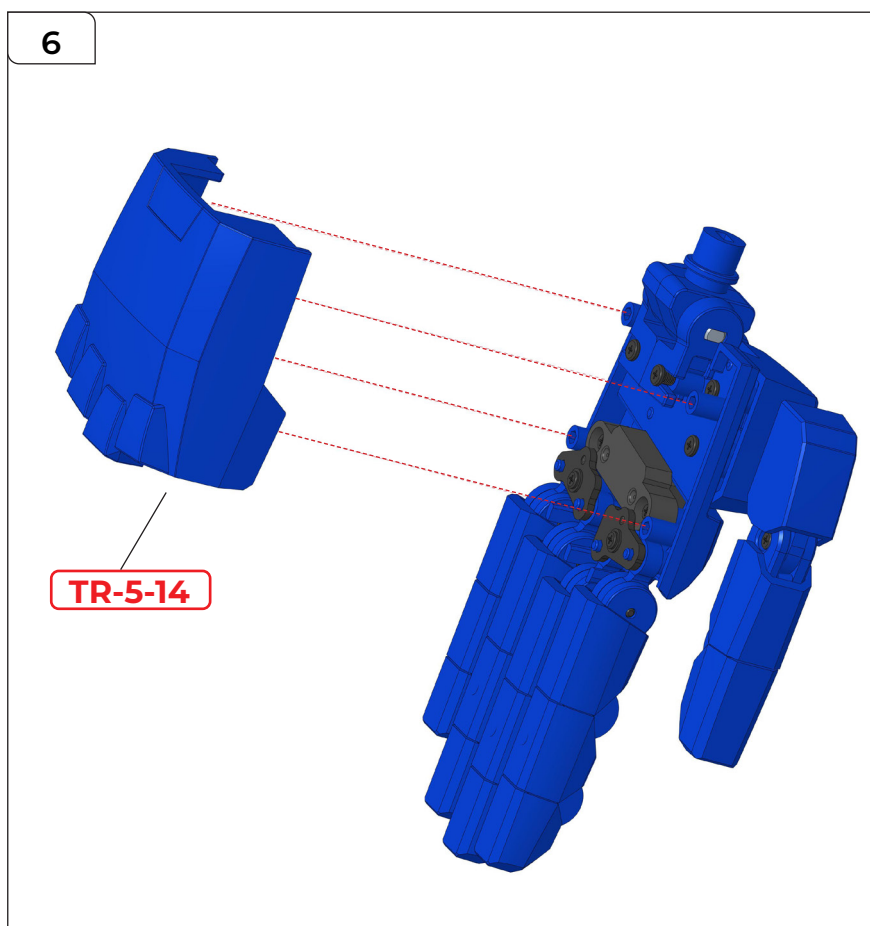
Attach TR-5-07 and TR-5-06 to A as shown.

# Assembling the Right Hand



## STEP 5

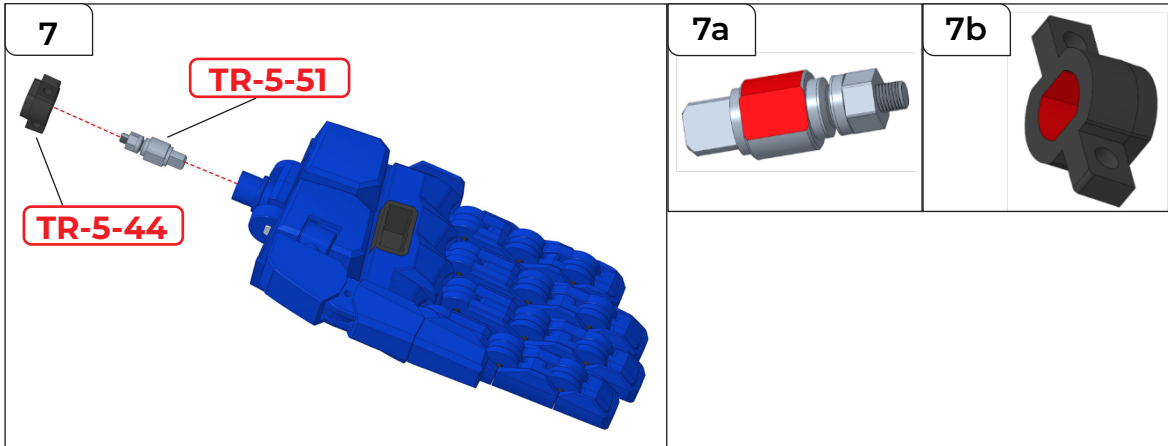
Then fix the assembly from step 4 (A) to the hand (B) using 2x PB2.3x6 mm screws as shown.



## STEP 6

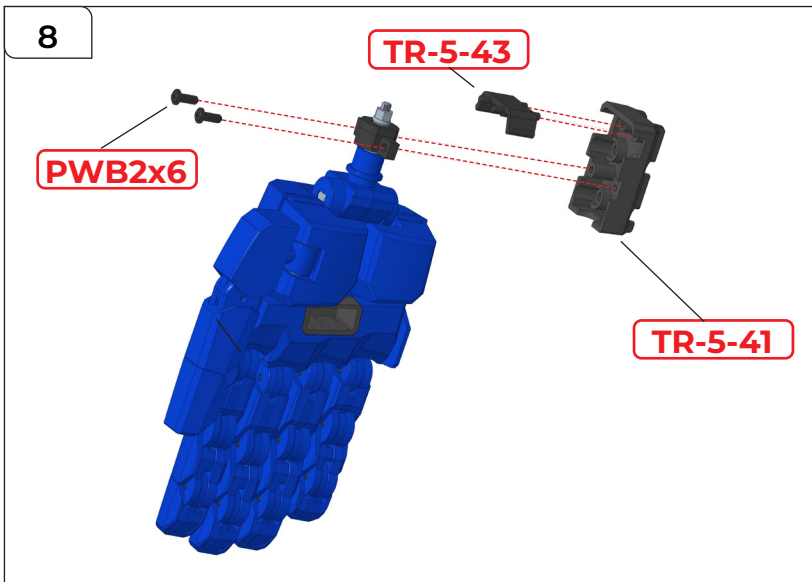
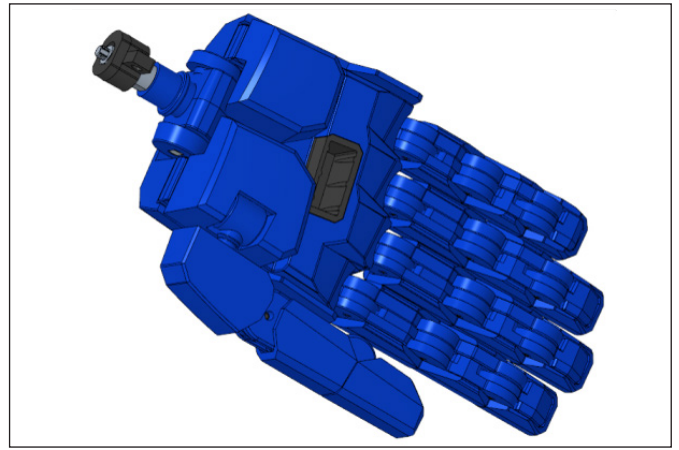
Apply a little glue to TR-5-14 as shown above, then attach it to the hand assembly.

# Assembling the Right Hand



## STEP 7

Attach **TR-5-51** and **TR-5-44** to the right hand as shown, checking the orientation as shown in 7a and 7b.

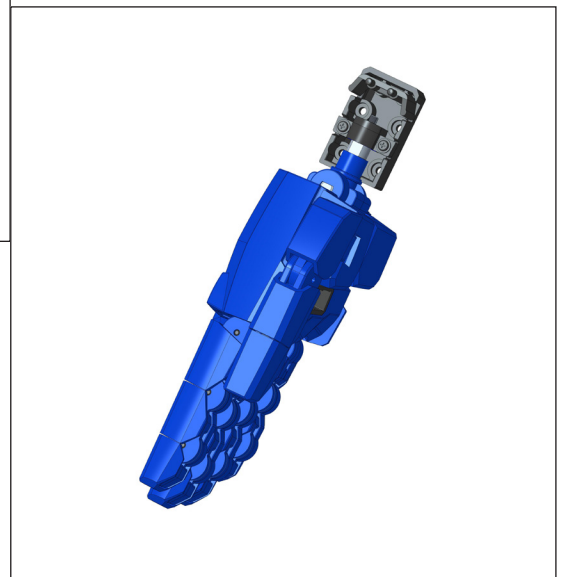


## STEP 8

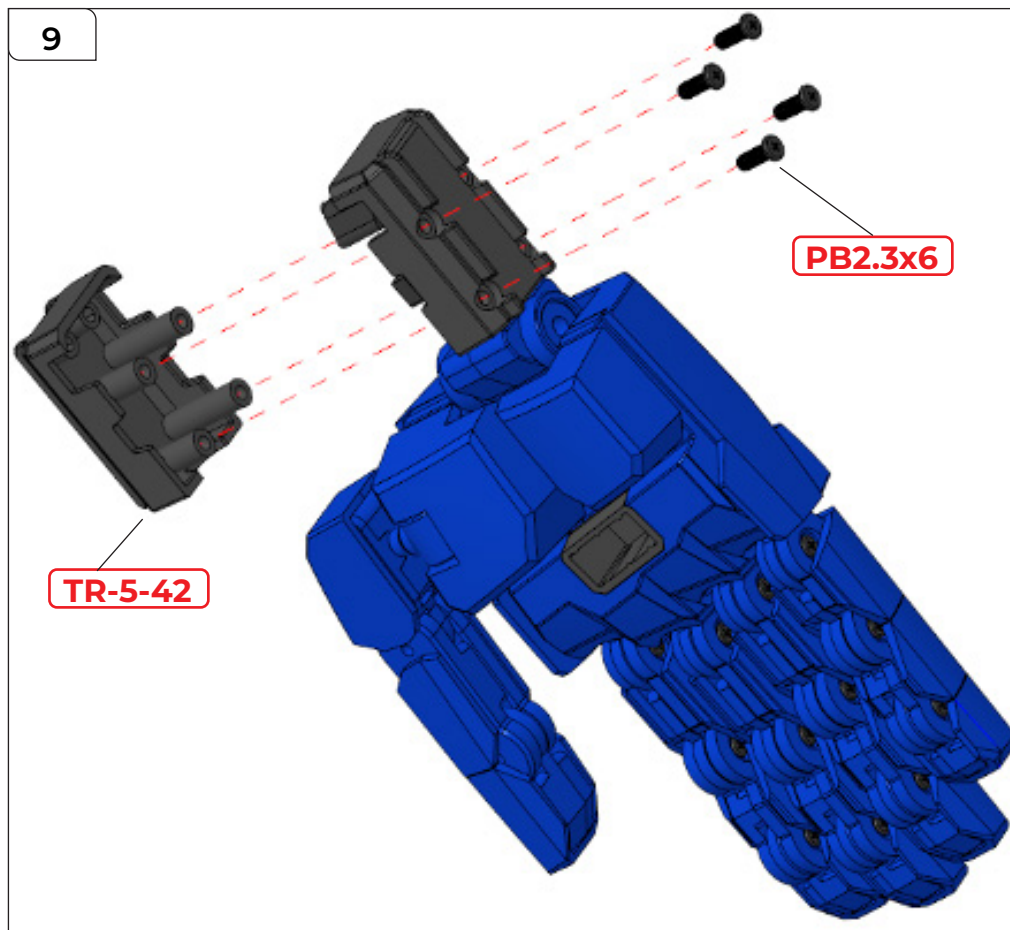
Then place **TR-5-43** on **TR-5-41** before attaching **TR-5-43** to **TR-5-44** on the hand as shown below.

Secure parts in place using **2x PWB2x6 mm** screws.

Note, part **TR-5-43** will be secured in place in the next step.



# Assembling the Right Hand

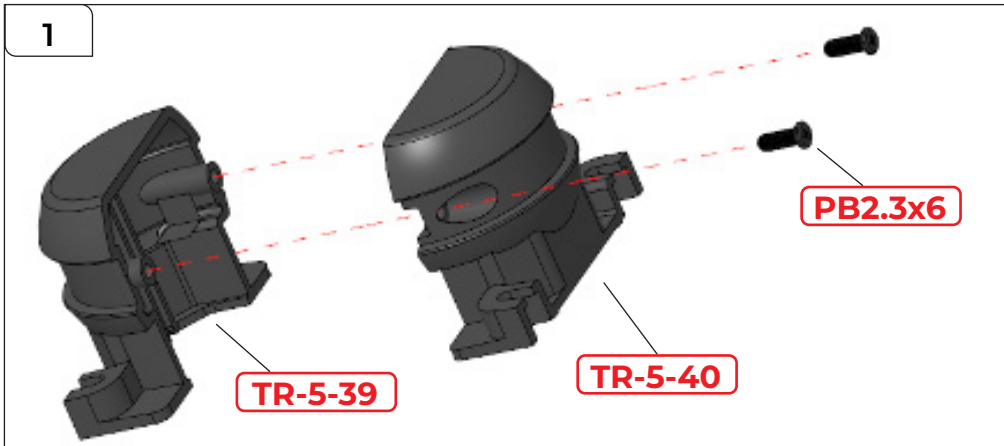


## STEP 9

Attach TR-5-42 to the hand, securing it in place as shown using 4x PB2.3x6 mm screws.



# Assembling the Lower Right Arm

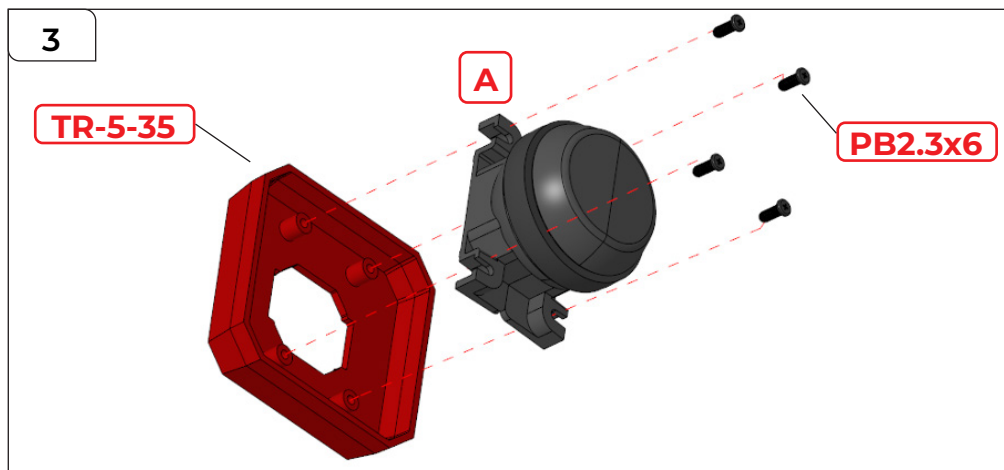
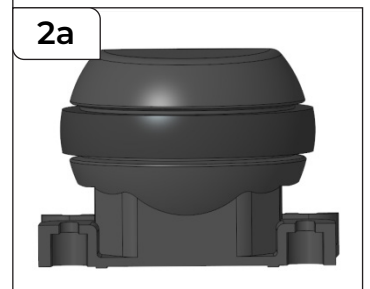


## STEP 1

Join TR-5-39 and TR-5-40 together, securing them using 2x PB2.3x6 mm screws.

## STEP 2

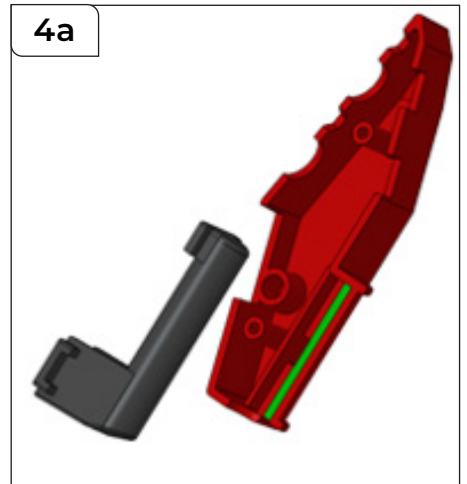
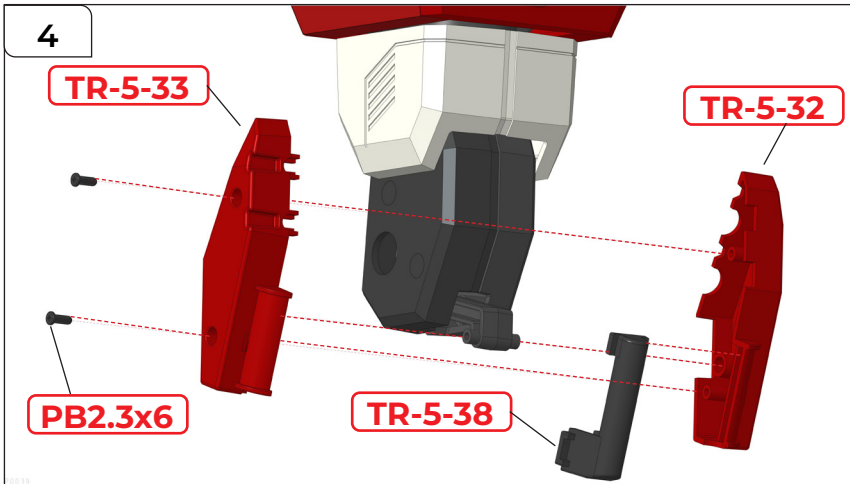
Push TR-5-46 into the recess on A (shown in position in 2a)



## STEP 3

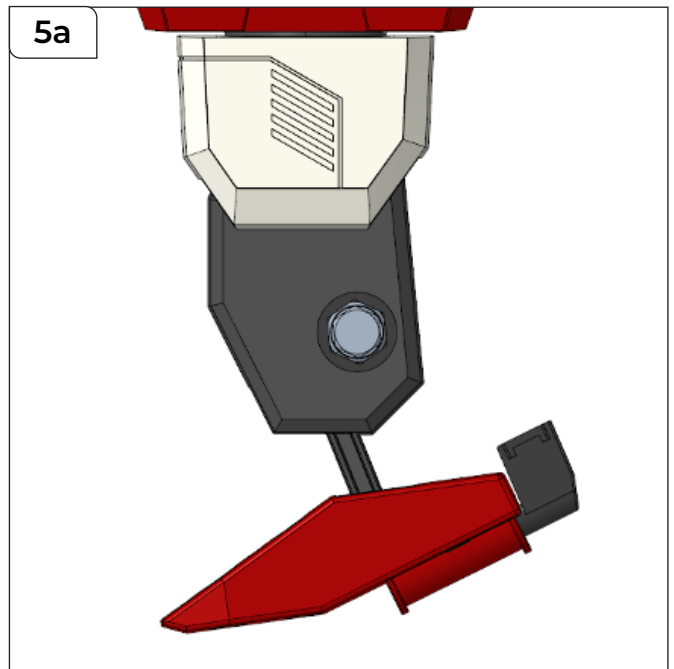
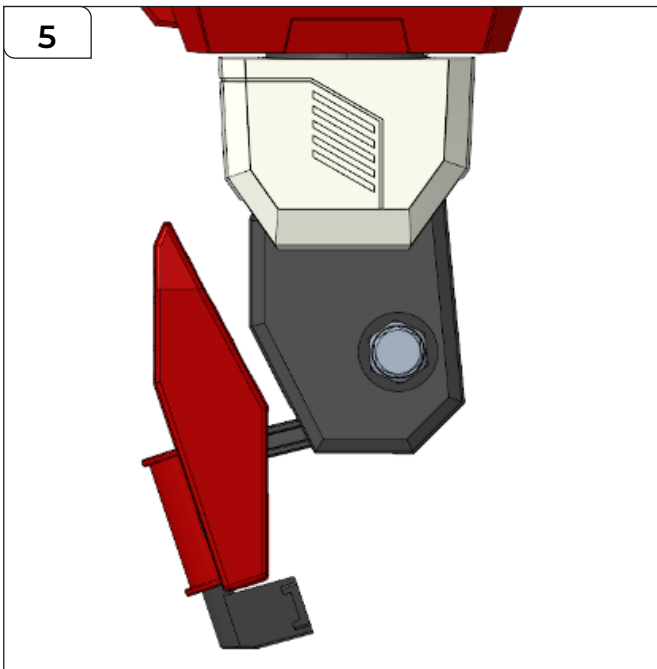
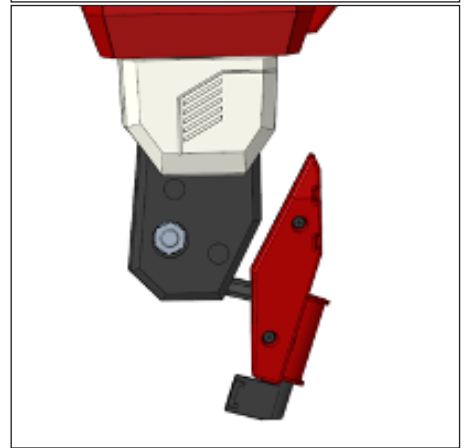
Attach TR-5-35 to A, securing in place with 4x PB2.3x6 mm screws

# Assembling the Lower Right Arm



## STEP 4

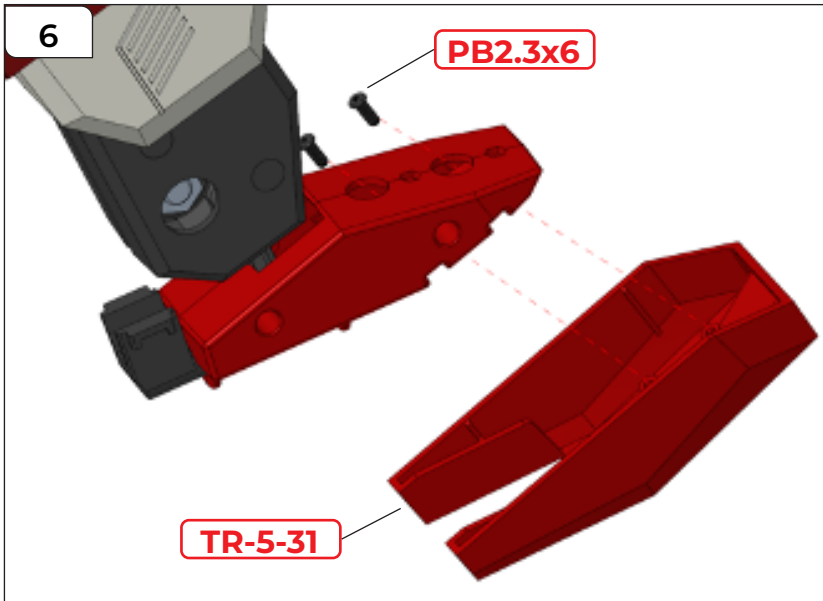
Attach **TR-5-33**, **32** & **38** to the right arm, completed in pack 4. The images to the right show the correct orientation for these parts; **TR-5-38** should move in the groove highlighted in green in 4a. Secure together using **2x PB2.3x6 mm** screws.



## STEP 5

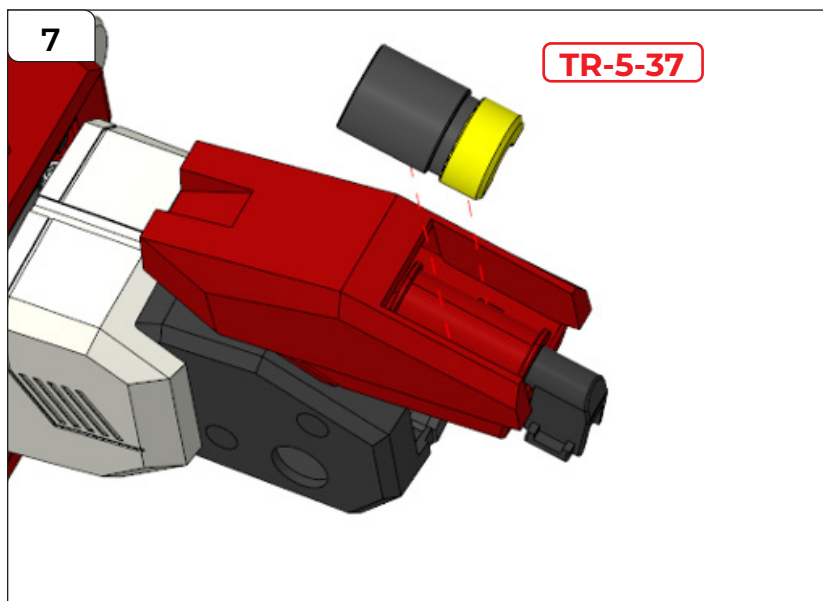
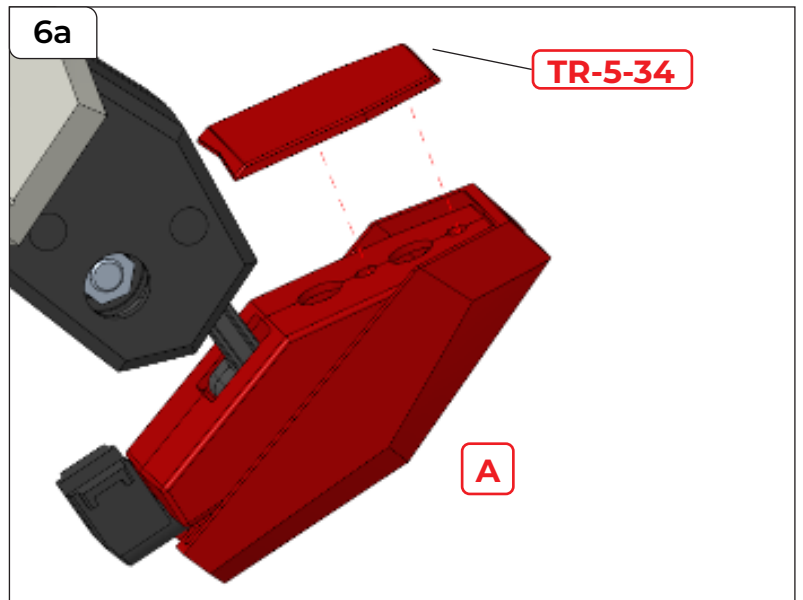
Before starting the next steps, arrange the bottom section of the right arm in the orientation shown in 5a.

# Assembling the Lower Right Arm



## STEP 6

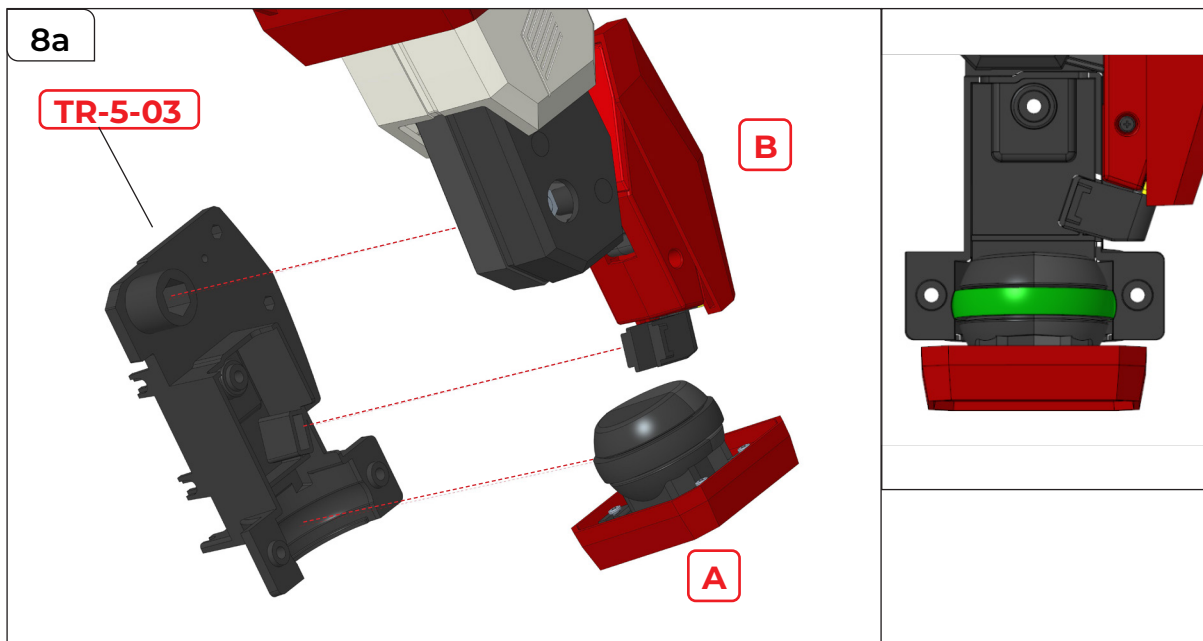
Attach **TR-5-31** onto the arm assembly and secure it using **2x PB2.3x6 mm** screws. Fix **TR-5-34** to the arm as shown in 6a.



## STEP 7

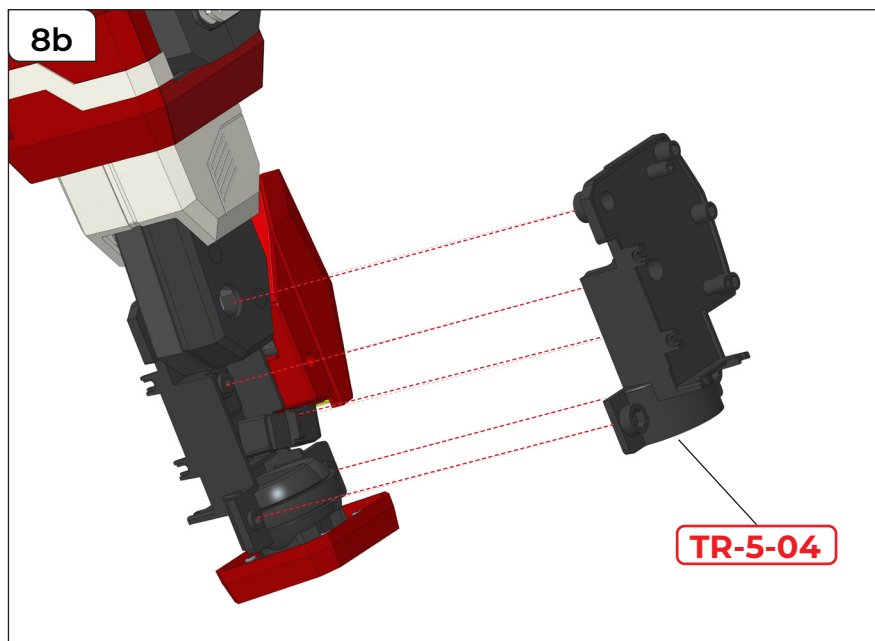
Attach **TR-5-37** to the arm.

# Assembling the Lower Right Arm



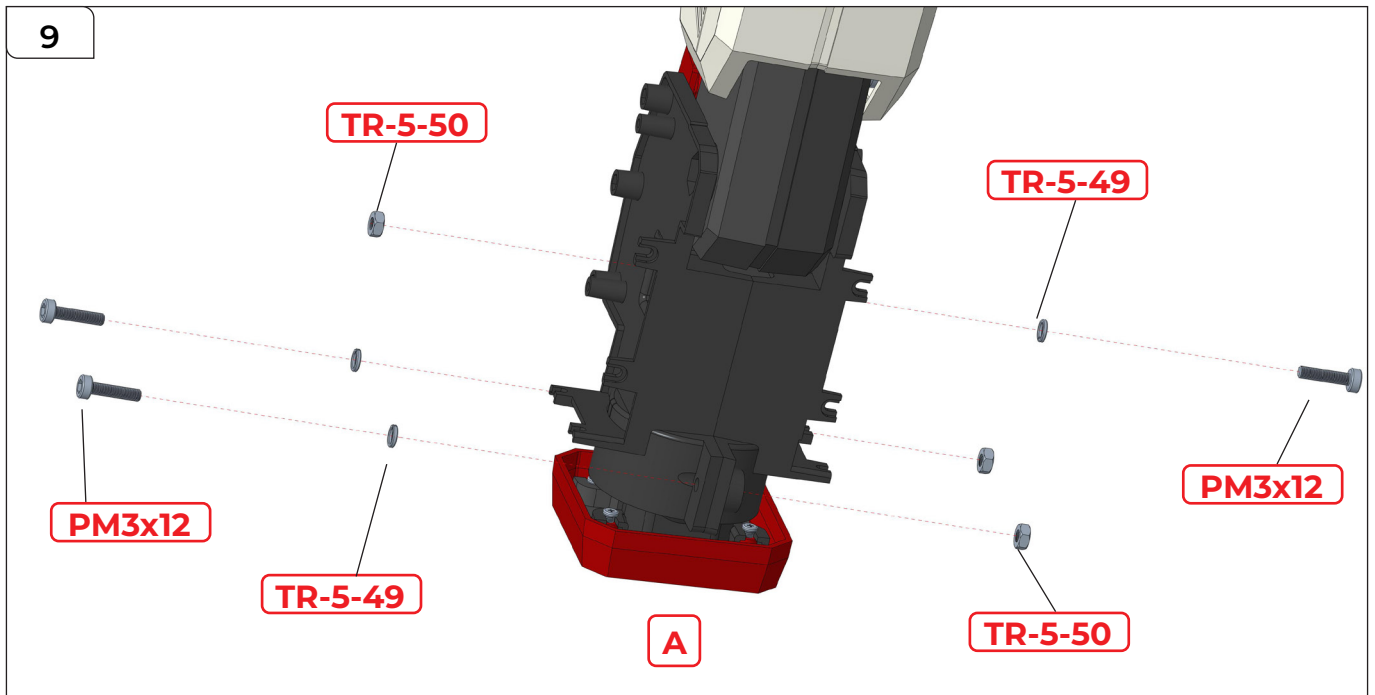
## STEP 8

Attach A, TR-5-03 & TR-5-04 to the arm (B) as shown.



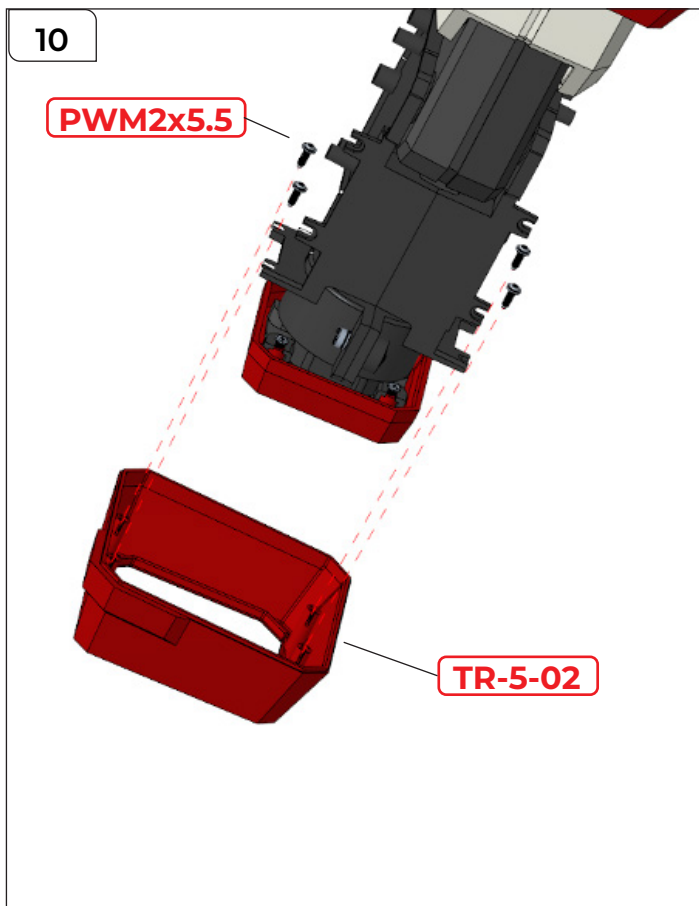


# Assembling the Lower Right Arm



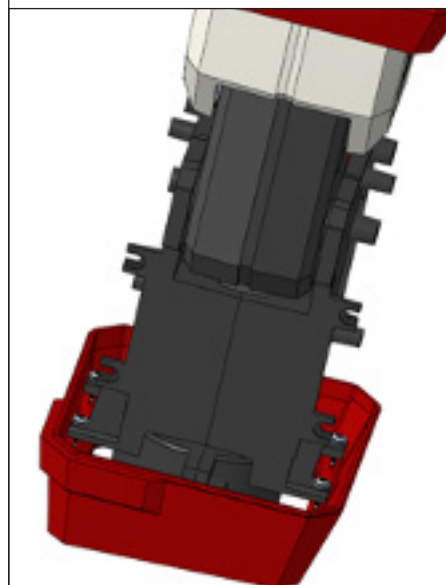
## STEP 9

Thread 3x nuts TR-5-49 onto 3x PM3x12 mm screws, then feed them through the screw holes as shown. Fasten 3x TR-5-50 over the screws to secure everything together.

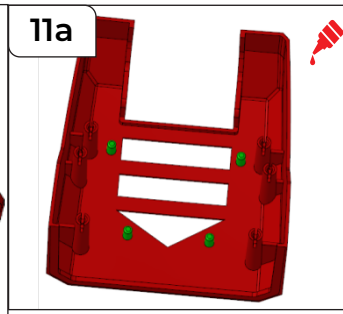
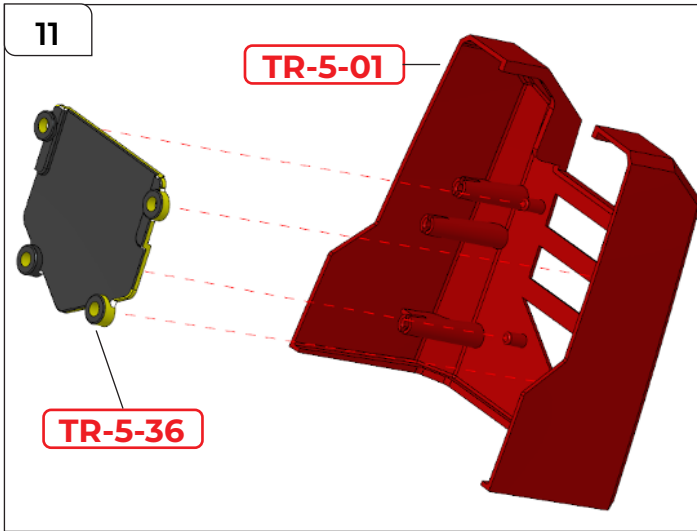


## STEP 10

Push TR-5-02 onto the arm assembly, securing it in place using 4x PWM2x5.5 mm screws.

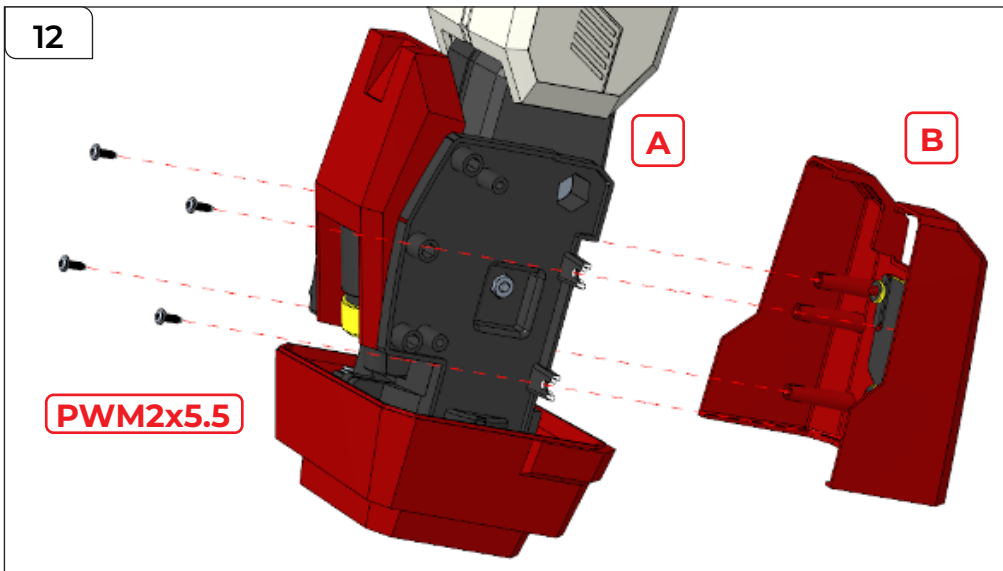


# Assembling the Lower Right Arm



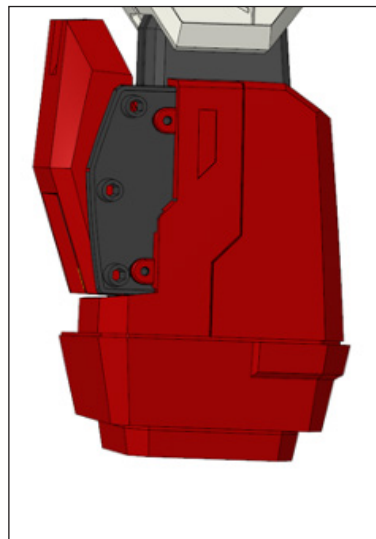
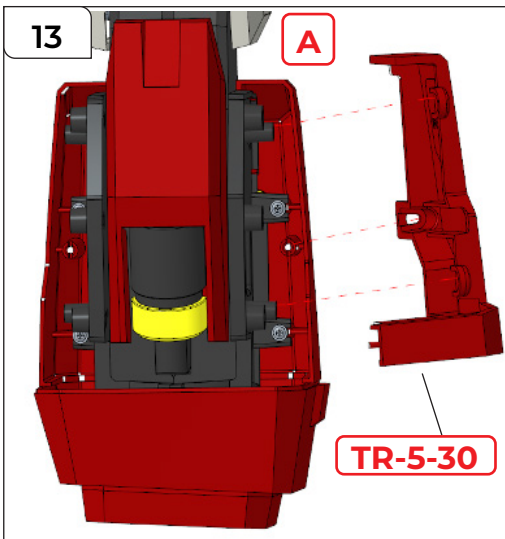
## STEP 11

Apply a little glue to TR-5-36 (indicated by the green area in 11a) before attaching it to TR-5-01 as shown.



## STEP 12

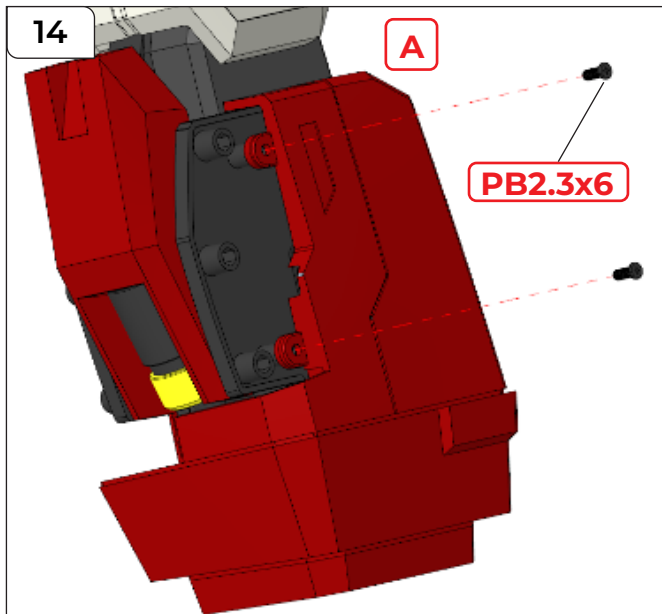
Attach the assembly from step 11 to the arm as shown. Secure it in place using 4x PWM2x5.5 mm screws.



## STEP 13

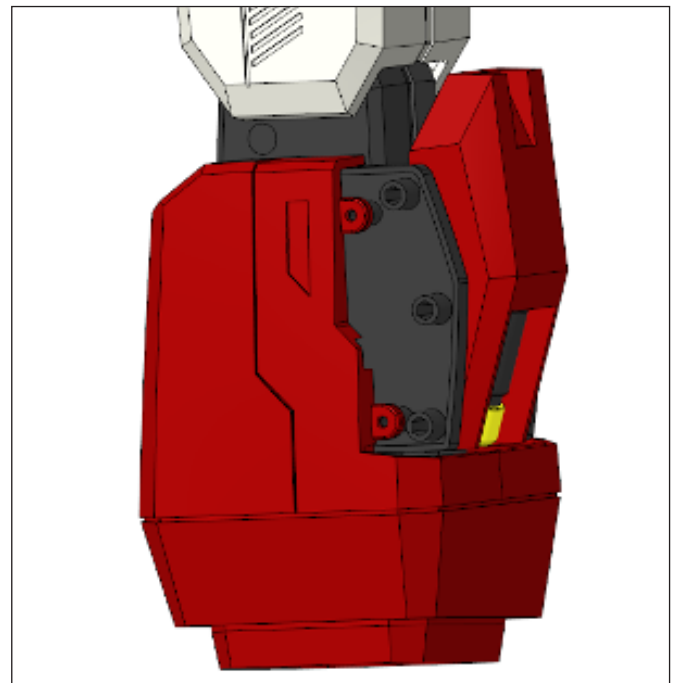
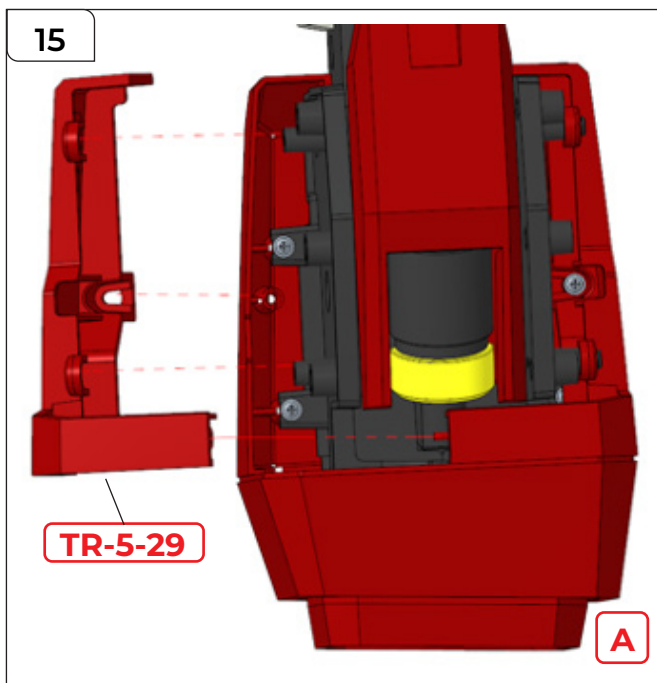
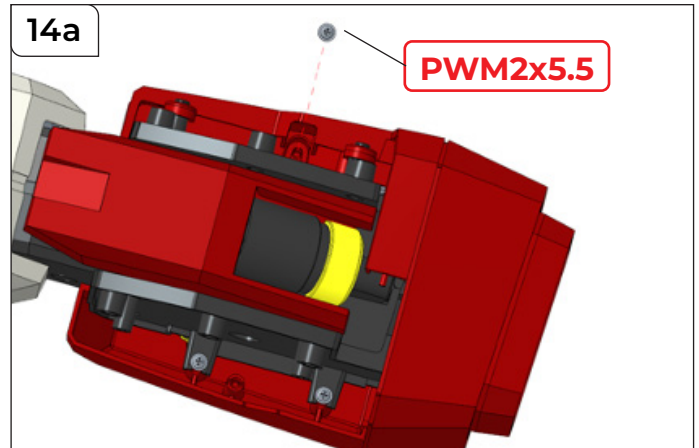
Attach TR-5-30 to the arm, as shown.

# Assembling the Lower Right Arm



## STEP 14

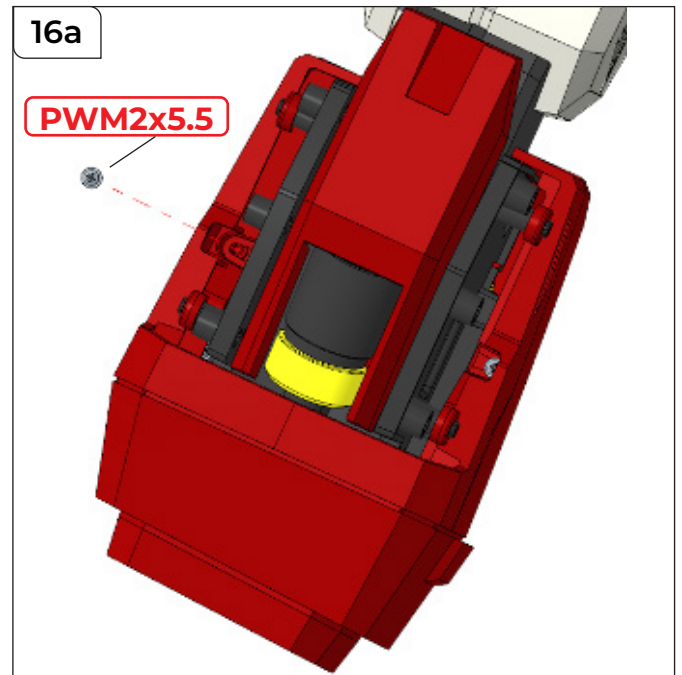
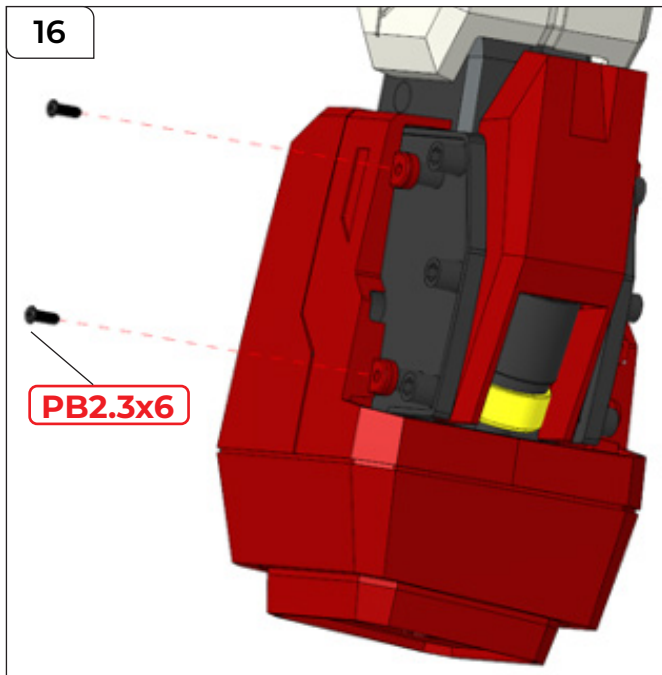
Secure TR-5-30 to the arm using 2x PB2.3x6 mm screws and 1x PWM2x5.5 mm screw as shown in 14 and 14a below.



## STEP 15

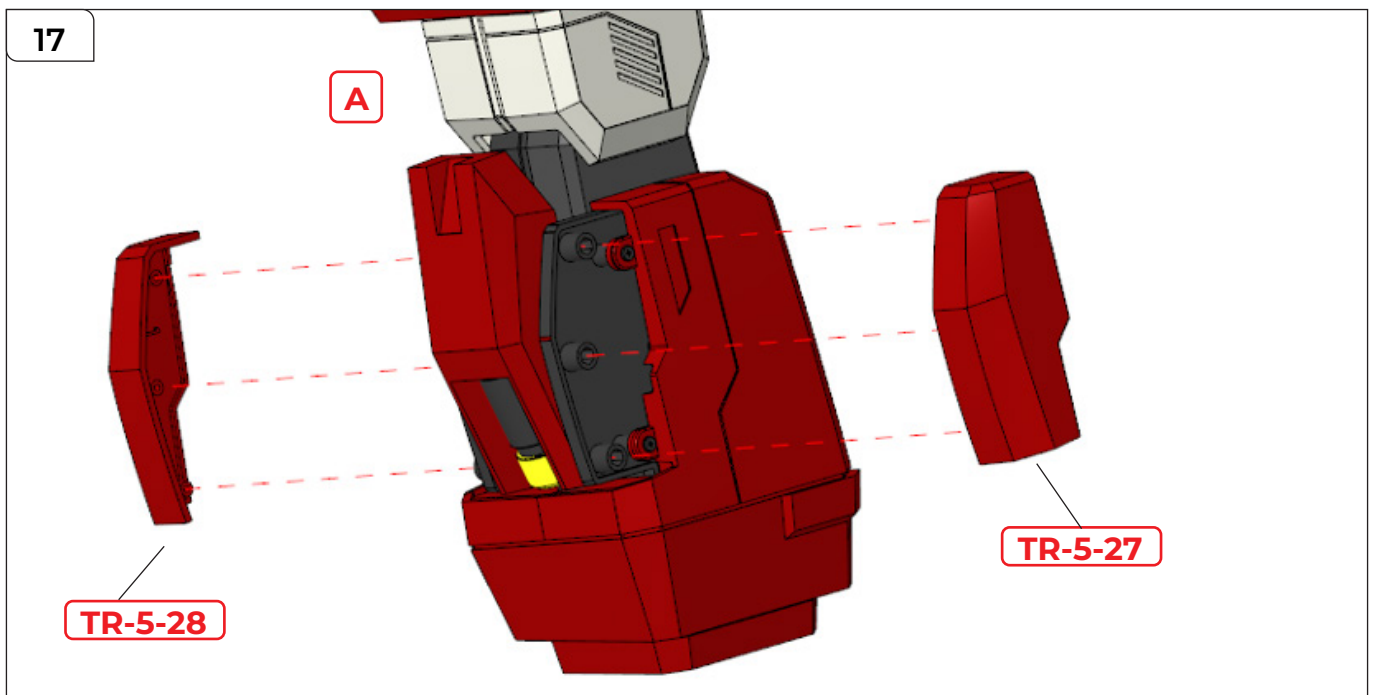
Attach TR-5-29 to the other side of the arm as shown.

## Assembling the Lower Right Arm



### STEP 16

Secure TR-5-29 to the arm using **2x PB2.3x6 mm** screws and **1x PWM2x5.5 mm** screw as shown in 16 and 16a above.

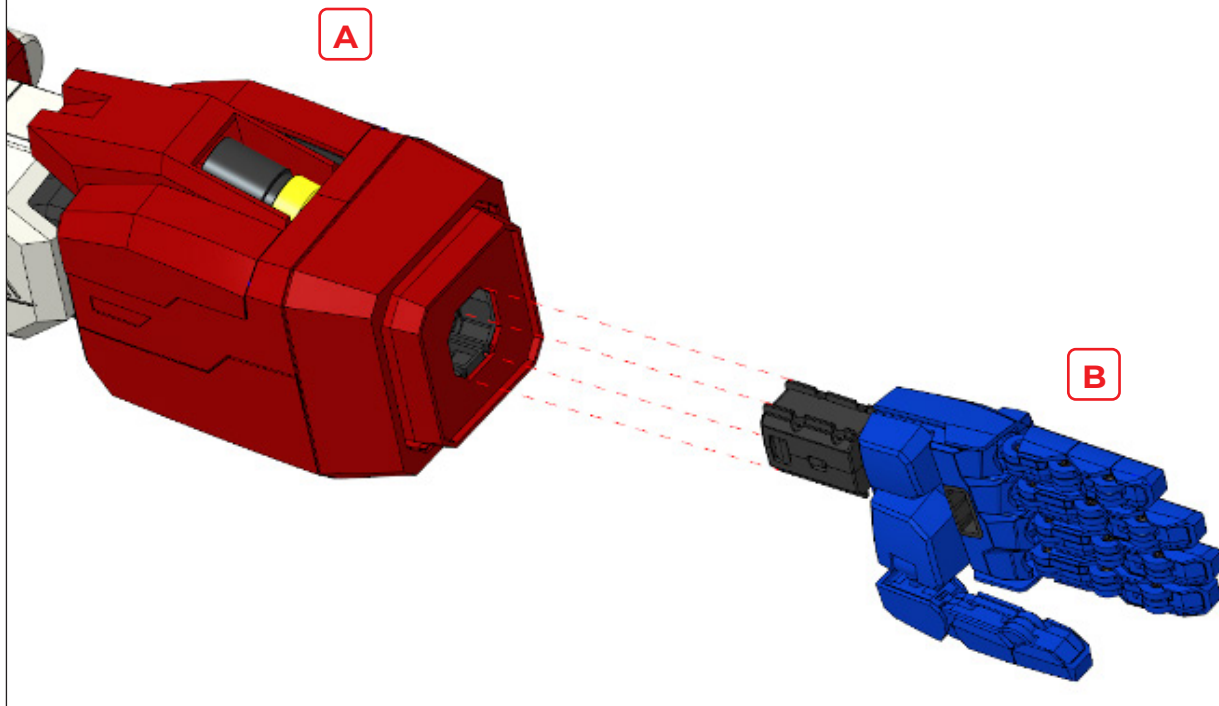


### STEP 17

Test fit **TR-5-27** and **28** as shown before fixing them in place.

# Assembling the Lower Right Arm

18



## STEP 18

Push the hand assembly into the end of the arm assembly as shown.

# Assembling the Lower Right Arm

PACK 5 COMPLETE

